

**This is an electronic reprint of the original article.**

**This reprint *may differ* from the original in pagination and typographic detail.**

**Author(s):** Ari Laurén, Marjo Palviainen, Susan Page, Chris Evans, Iñaki Urzainki and Hannu Hökkä

**Title:** Nutrient Balance as a Tool for Maintaining Yield and Mitigating Environmental Impacts of Acacia Plantation in Drained Tropical Peatland—Description of Plantation Simulator

**Year:** 2021

**Version:** Published version

**Copyright:** The Author(s) 2021

**Rights:** CC BY 4.0

**Rights url:** <http://creativecommons.org/licenses/by/4.0/>

**Please cite the original version:**

Laurén, A.; Palviainen, M.; Page, S.; Evans, C.; Urzainki, I.; Hökkä, H. Nutrient Balance as a Tool for Maintaining Yield and Mitigating Environmental Impacts of Acacia Plantation in Drained Tropical Peatland—Description of Plantation Simulator. *Forests* 2021, *12*, 312.

<https://doi.org/10.3390/f12030312>

All material supplied via *Jukuri* is protected by copyright and other intellectual property rights. Duplication or sale, in electronic or print form, of any part of the repository collections is prohibited. Making electronic or print copies of the material is permitted only for your own personal use or for educational purposes. For other purposes, this article may be used in accordance with the publisher's terms. There may be differences between this version and the publisher's version. You are advised to cite the publisher's version.

## Article

# Nutrient Balance as a Tool for Maintaining Yield and Mitigating Environmental Impacts of *Acacia* Plantation in Drained Tropical Peatland—Description of Plantation Simulator

Ari Laurén <sup>1,\*</sup> , Marjo Palviainen <sup>2</sup> , Susan Page <sup>3</sup> , Chris Evans <sup>4</sup> , Iñaki Urzainki <sup>5</sup> and Hannu Hökkä <sup>5</sup>

<sup>1</sup> School of Forest Sciences, Faculty of Science and Forestry, University of Eastern Finland, Joensuu Campus, P.O. Box 111, Yliopistokatu 7, FI-80101 Joensuu, Finland

<sup>2</sup> Department of Forest Sciences, University of Helsinki, P.O. Box 27, 00014 Helsinki, Finland; marjo.palviainen@helsinki.fi

<sup>3</sup> School of Geography, Geology and the Environment, University of Leicester, University Road, Leicester LE1 7RH, UK; sep5@leicester.ac.uk

<sup>4</sup> UK Centre for Ecology and Hydrology, Deiniol Road, Bangor LL57 2UW, UK; cev@ceh.ac.uk

<sup>5</sup> Natural Resources Institute Finland (Luke), Latokartanonkaari 9, FI-00790 Helsinki, Finland; inaki.urzainqui@luke.fi (I.U.); hannu.hokka@luke.fi (H.H.)

\* Correspondence: ari.lauren@uef.fi

**Abstract:** Responsible management of *Acacia* plantations requires an improved understanding of trade-offs between maintaining stand production whilst reducing environmental impacts. Intensive drainage and the resulting low water tables (*WT*) increase carbon emissions, peat subsidence, fire risk and nutrient export to water courses, whilst increasing nutrient availability for plant uptake from peat mineralization. In the plantations, hydrology, stand growth, carbon and nutrient balance, and peat subsidence are connected forming a complex dynamic system, which can be thoroughly understood by dynamic process models. We developed the Plantation Simulator to describe the effect of drainage, silviculture, fertilization, and weed control on the above-mentioned processes and to find production schemes that are environmentally and economically viable. The model successfully predicted measured peat subsidence, which was used as a proxy for stand total mass balance. Computed nutrient balances indicated that the main growth-limiting factor was phosphorus (P) supply, and the P balance was affected by site index, mortality rate and *WT*. In a scenario assessment, where *WT* was raised from  $-0.80$  m to  $-0.40$  m the subsidence rate decreased from 4.4 to 3.3 cm yr<sup>-1</sup>, and carbon loss from 17 to 9 Mg ha<sup>-1</sup> yr<sup>-1</sup>. P balance shifted from marginally positive to negative suggesting that additional P fertilization is needed to maintain stand productivity as a trade-off for reducing C emissions.

**Keywords:** carbon; drainage; ecosystem modelling; fertilization; growth; peat subsidence; phosphorus; water table



**Citation:** Laurén, A.; Palviainen, M.; Page, S.; Evans, C.; Urzainki, I.; Hökkä, H. Nutrient Balance as a Tool for Maintaining Yield and Mitigating Environmental Impacts of *Acacia* Plantation in Drained Tropical Peatland—Description of Plantation Simulator. *Forests* **2021**, *12*, 312. <https://doi.org/10.3390/f12030312>

Received: 15 February 2021

Accepted: 4 March 2021

Published: 7 March 2021

**Publisher's Note:** MDPI stays neutral with regard to jurisdictional claims in published maps and institutional affiliations.



**Copyright:** © 2021 by the authors. Licensee MDPI, Basel, Switzerland. This article is an open access article distributed under the terms and conditions of the Creative Commons Attribution (CC BY) license (<https://creativecommons.org/licenses/by/4.0/>).

## 1. Introduction

Peatlands extend from the polar regions to the humid tropics, and may hold over 1000 Pg of carbon (C) [1,2], more than the total pool of C in the atmosphere. In pristine peatlands the input of dead organic matter exceeds the rate of biological decomposition of the organic residues and therefore pristine peatlands tend to store C [3]. However, the cultivation of peatlands, which requires intensive water management and control of plant nutrition, may turn peatlands into a C source [4–8] and cause other environmental problems, such as peat subsidence [5,9], increased nutrient export to water courses [10], and increased fire risk [11].

A responsible approach to the bio-economy of cultivated tropical peatlands calls for an improved understanding of the trade-offs between maintaining crop production whilst reducing negative environmental impacts. In Southeast Asia, ombrogenous peatlands

cover approximately 25 Mha [12]. Half of this area is under some form of agricultural use—either for large-scale plantations of oil palm or *Acacia* for pulp and paper production, or for smallholder farming [13]. Mitigating C losses and associated peat subsidence in these landscapes is of increasing importance in the context of global climate change agenda and regional land use planning [14].

When a peatland is drained, the same biogeochemical processes that enhance crop production are also responsible for increased C emissions, subsidence and nutrient exports. Lowering of the water table (*WT*) increases the rate of organic matter decomposition and consequently nutrient release. It is likely that this is the main mechanism through which drainage improves crop production; for example, on infertile ombrogenous peatlands, decomposition of organic matter provides the main source of nutrients for tree stands [15], with several field experiments demonstrating that drainage improves both nutrient availability in peat [16–18] and the growth rate of trees. On the other hand, there will also be a direct growth response attributable to amelioration of root oxygen ( $O_2$ ) stress following the removal of excess water. Since most deep peats in South East Asia are composed of woody, fibric materials that have a low bulk density and high macroporosity, there is typically favourable aeration in the rooting zone above the *WT* and particularly in peatlands that have been drained. These arguments highlight the role of nutrition rather than  $O_2$  stress in the drainage-induced growth response of forest stands on ombrogenous peat, with previous studies demonstrating that tree growth is frequently limited by phosphorus (P), potassium (K) and, at infertile sites, by nitrogen (N) availability [19–21].

If an enhanced nutrient supply is the driver behind the drainage-induced growth response, it provides us with tools to maintain crop production and to mitigate harmful environmental effects with a designed combination of *WT* control and careful nutrient management of a stand. In tropical peatlands, it has been estimated that raising plantation *WT* from  $-80$  cm to  $-40$  cm, would decrease the  $CO_2$  emissions by  $50 \text{ Mg ha}^{-1} \text{ yr}^{-1}$  [7] and the rate of peat subsidence by  $1.7 \text{ cm yr}^{-1}$  [9]. At the same time, however, nutrient release from decomposition of organic matter will decrease. This is shown for example by Marwanto et al. [22], who observed a sharp decrease in soil water cation concentrations after rewetting a peat profile following a dry period under oil palm plantation in Kalimantan, Indonesia. In order to maintain productivity at higher *WT*, it is therefore likely to be necessary to replace nutrients that are no longer being generated through peat decomposition via artificial fertilization. Fertilization can be designed to meet the plant nutrient needs, thereby fulfilling the production demand, whilst potentially decreasing the leaching loss of other nutrients. On the other hand, the use of artificial fertilizers incurs an economic cost, and risks greenhouse gas emissions displacement to fertilizer production or increased  $N_2O$  emissions from the plantation. In the case of pulpwood plantations, however, there is considerable potential to recover nutrients from harvested biomass during the pulp production process, and to return these to the plantation as wood ash, presenting the opportunity for a productive, low-emission, ‘circular’ nutrient management system if implemented successfully.

Nutrient management requires a thorough understanding of stand growth and nutrient demand, litter input, and litter and peat decomposition and consequent nutrient release; and finally how these processes depend on the dynamics of the *WT*. In tree plantations on peatland, stand biomass growth and yield, nutrient supply, C balance, stand total mass balance, peat subsidence and peat hydrology are connected to each other in a tight and recursive manner resulting in a complex dynamic system. Attempts to optimize crop production targets within responsible environmental constraints therefore require a thorough understanding of this system, which can be provided by dynamic process models. Many process models accounting for plantation growth and yield, photosynthesis, and water and nutrient use in mineral soils have been developed [23–26], but these models are not particularly suitable for peatland sites, where hydrological conditions, and environmental and plant nutrition problems are different from mineral soils.

In this paper, we describe the Plantation Simulator, a model that describes biomass production, carbon and nutrient balance with respect to different plantation management operations such as drainage, silviculture, fertilization, and weed control. It allows us to find production schemes that are socially and environmentally bearable; socially and economically equitable; and environmentally and economically viable. Using a Monte Carlo -approach we ran the model with a large variety of plausible input data and tested the model performance against published data from similar conditions. After demonstrating plausibility, we studied the system behavior under different *WT* in order to optimize plantation growth by manipulating nutrient availability, whilst minimizing peat C loss and subsidence.

We apply the Plantation Simulator to outline management scenarios for an *Acacia* plantation, where requirements for *WT* management have recently changed. After the severe fire-related haze (air pollution) season in 2015, the Indonesian government released a regulation obliging all managers of plantations on peat to maintain an average *WT* within  $-0.40$  m of the peat surface with the primary aim of reducing fire risk whilst also seeking to reduce emissions of greenhouse gases and other pollutants (SK.22/PPKL/PKG/PKL.0/7/2017). Previously, standard *Acacia* plantation operating procedures have generally aimed at keeping the *WT* in the region of  $-0.70$  m. Given the rapid implementation of the requirement for higher *WT* in plantations, there has been little opportunity to gather datasets on the implications that implementing higher *WT* management would have for plantation growth and yield. This lack of experimental evidence can, however, be overcome through the application of a modelling study that merges theoretical understanding of biogeochemical processes. A higher *WT* will reduce the rate of organic matter decomposition and the subsequent release of nutrients; and is therefore likely to reduce stand growth. However, it will introduce environmental benefits by decreasing rates of peat subsidence and greenhouse gas emissions. In this study we ask:

1. how the nutrient balance of an *Acacia* stand will change under a higher *WT* regime;
2. what kind of nutrient management should be applied to maintain the yield under higher *WT* management; and
3. how much the rate of peat subsidence and CO<sub>2</sub> efflux will be decreased under this management regime?

Uncertainties of the model are discussed and the needs for future field measurements to decrease these uncertainties are suggested.

## 2. Materials and Methods

### 2.1. *Acacia* Plantation in Drained Tropical Peatlands

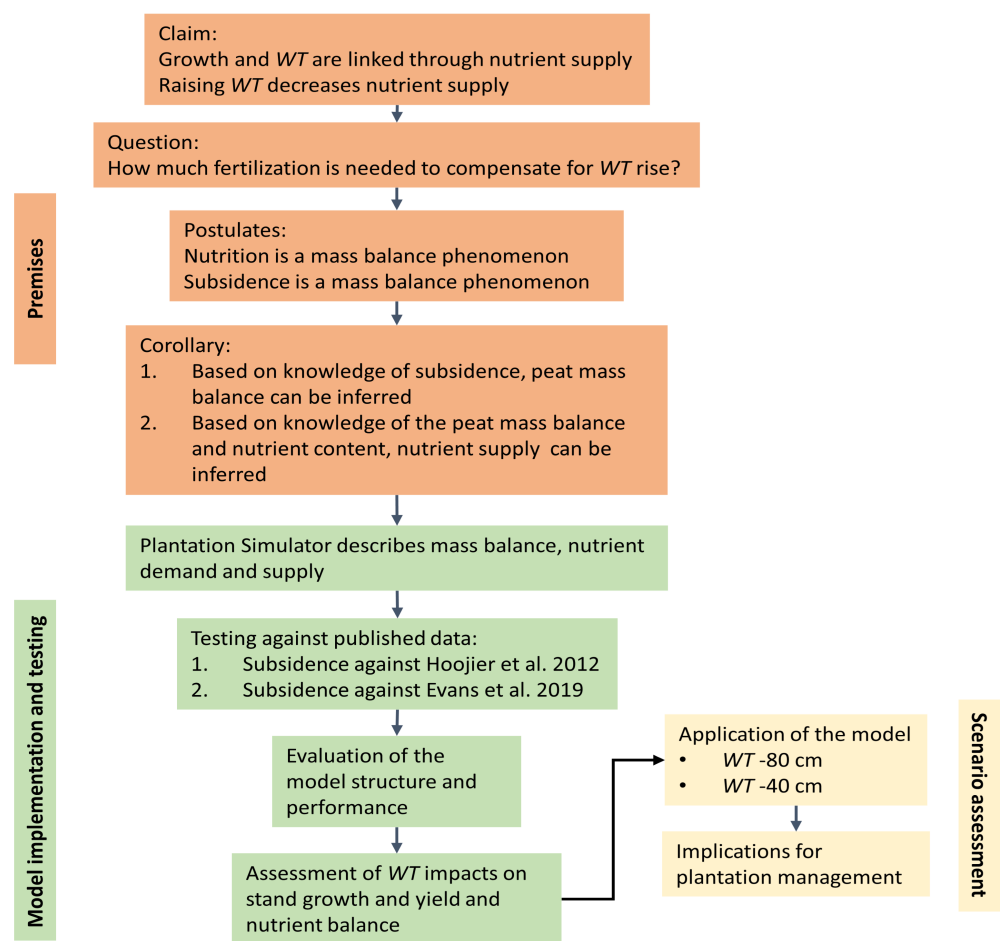
*Acacia crassicaarpa* (Leguminosae) is a fast-growing, nitrogen-fixing tree that is the principal pulpwood plantation species grown on peat soils in SE Asia. It is tolerant of a wide range of soil types and suitable for low fertility sites [23]. The typical plantation rotation period between planting of tree seedlings to harvest, is four to five years, and a closed canopy develops at around 12 to 18 months. Tree height at harvest is in the range from 19 to 24 m. In order to provide suitable rooting conditions, peatland plantations are drained by a network of canals, typically 5 to 8 m wide and 500 to 800 m apart, and by smaller field drains. One dose of artificial P fertilizer is applied at the time of planting [24]. Weeding occurs several times before canopy closure and at two years of age any self-seeded or invasive tree species are removed from the plantation.

### 2.2. Study Outline

The Plantation Simulator is based on a mass balance (biomass, C, N, P, K) computation of drained tropical peatland. We explicitly account for organic matter produced by the plantation, returned to soil as litter, and decomposed and lost as CO<sub>2</sub> efflux to the atmosphere. The processes driving the mass balance are complex, and comprehensive experimental data for model validation are not available due to confidentiality of data owned by plantation companies. Therefore, the model is tested against published data



and by filling the data gaps with required assumptions. First, the overall model structure is described (detailed description in Appendix A), then the model performance in mass balance calculation is shown against published subsidence data. Because the subsidence reports contain little information about the stand properties and dynamics, we used a Monte Carlo approach, deriving unknown site properties from a probability distribution and computing a large simulation set. The results of the simulation set were compared to available independent, published subsidence data sets from similar land use, climatic conditions and peat formations [5,9]. Subsidence is a suitable variable for model testing because it integrates input and output of organic matter through a long time period, whereas direct measurements of the C balance of tropical peatlands are limited to a very small number of shorter-term studies. After having demonstrated plausibility from the mass balance viewpoint, the nutrition simulation results were evaluated against known fertilization schemes. Thereafter, the model was applied for two *WT* schemes, and the nutritional consequences of the different *WT* were identified (Figure 1).

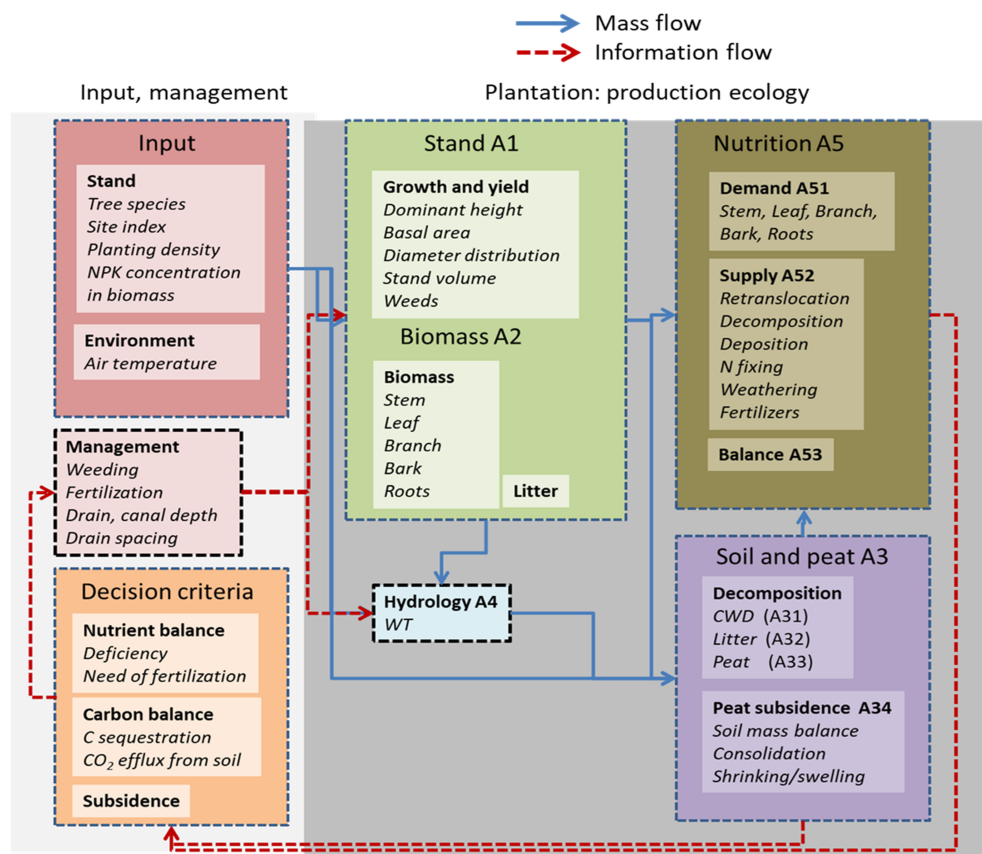


**Figure 1.** Deduction chart of the study.

### 2.3. Overall Model Description

The Plantation Simulator describes an *Acacia* plantation as a system composed of tree stand, soil, nutrient, and hydrology modules (Figure 2). Basic plantation inventory data such as tree species, planting density, site index describing the growth potential of the site [25], and literature-derived parameters are required as inputs for the model. Aspects of the plantation management regime including weeding, and fertilization are given as input parameters to the simulation. The Plantation Simulator computes growth and yield of the *Acacia* stand, organic matter decomposition and stand nutrition and allows quantification of the impact of plantation management and drainage on these processes. A one-month

time step is used. A recursive loop returns information concerning decision criteria, i.e., production, carbon and nutrient balance and peat subsidence, to the model user, thereby enabling adjustment of management procedures in support of improved production and environmental management practices (Figure 2). A detailed model description is provided in the Appendix A.

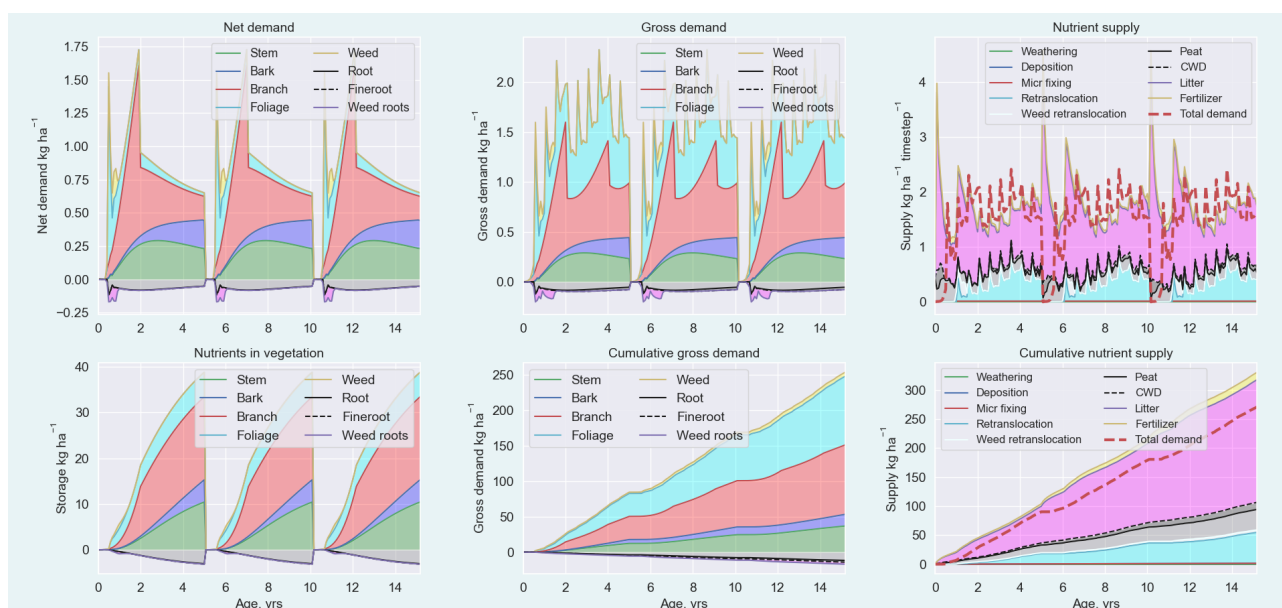


**Figure 2.** Structure of the Plantation Simulator. The plantation system (dark grey panel) accounts for growth and yield of the stand, water table and biogeochemical processes within the site, and returns target variable information to the management system. Target variables, i.e., current yield, nutrient status, carbon balance and subsidence rate are evaluated against decision criteria and the management practices can be adjusted to reach better production and environmental targets. Codes A1, A11, A12, etc. refer to chapters in the detailed model description in Appendixes A.1, A.1.1, A.1.2, etc.

#### 2.4. Deduction with Plantation Simulator

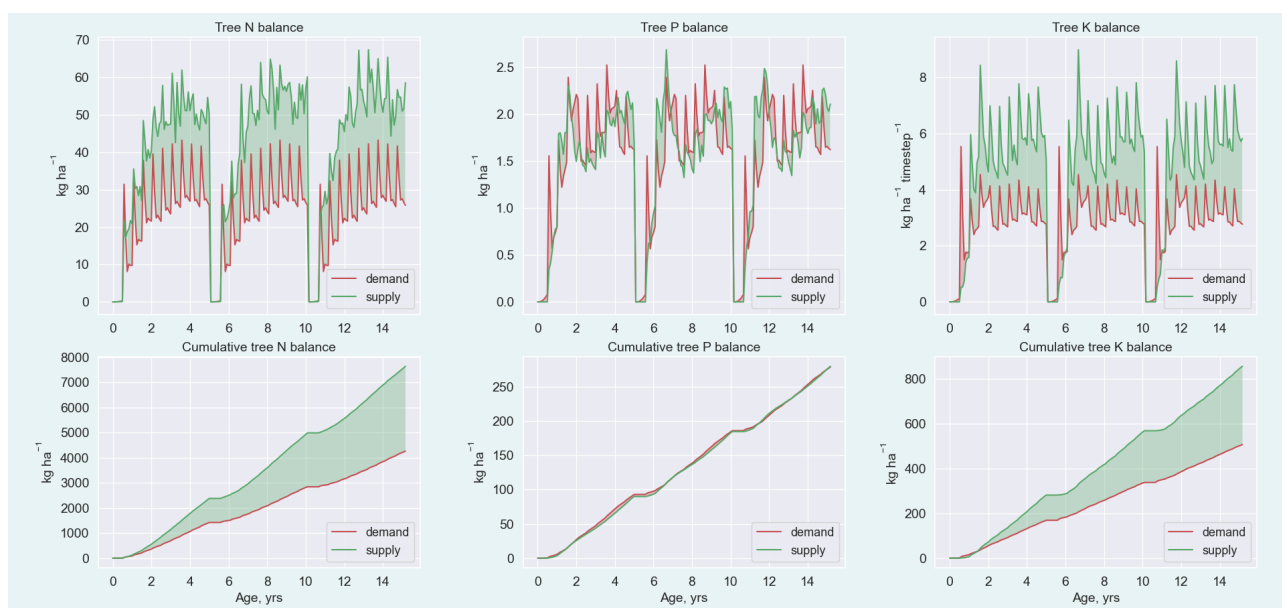
The key output of the Plantation Simulator is a detailed dynamic nutrient balance (Appendix A.5.3) of the *Acacia* stand. The balance contains N, P and K demand (Appendix A.5.1) and supply (Appendix A.5.2) as monthly values. Nutrient demand and supply are calculated independently; therefore, the results of growth and yield are conditional on nutrient supply: Following the Liebig's law of the minimum, growth can occur only if enough resources are available. Using the nutrient balance, the plantation managers can identify which nutrient is needed and when and can construct a fertilization regime to sustain the maximal growth.

Nutrient demand (Appendix A.5.1) is calculated from stand growth (Appendix A.1.1) and litter production (Appendix A.2). Net nutrient demand is derived from nutrient concentrations and growth of *Acacia* biomass components: foliage, bark, branch, fis, coarse roots, and stem wood (Figure 3). Thereafter, the gross total nutrient demand is calculated as the sum of the net demand and the nutrients lost through monthly litterfall. The competing nutrient demand of weeds is calculated accordingly.



**Figure 3.** Example of a phosphorus balance of an *Acacia* stand. Stand P storage (lower left) is computed from the biomass components (bark, branch, foliage, stem, fis, coarse roots) and their nutrient concentrations. Net demand (upper left) is the monthly change in nutrient storage. Gross demand (upper middle) accounts for net uptake and the uptake that replaces the nutrients lost in litterfall. Cumulative gross demand (lower middle) shows that the stand needs P at an approximate rate of  $280 \text{ kg ha}^{-1}$  during three rotations (250 kg for above-ground components and 30 kg for the below-ground components shown below the X-axis). The instantaneous nutrient supply (upper right) shows how much P becomes available from internal retranslocation, atmospheric deposition, fertilizer dissolution and decomposition of litter, coarse woody debris and peat. The cumulative nutrient supply is shown in the lower right panel. The dotted red line in the rightmost panels indicates the total nutrient demand of the stand.

The Plantation Simulator accounts for the main nutrient sources: Retranslocation from senescing litter, atmospheric deposition, nutrient release from decomposition of stand and weed litter, coarse woody debris and peat, and nutrient dissolution from fertilizers. Leguminous atmospheric N-fixation is also considered for *Acacia*. Each component in the demand and supply can be followed separately, thereby facilitating distinction of the most important processes and detailed component-wise consideration of uncertainty. Nutrient balance is calculated as both cumulative and instantaneous monthly values. The cumulative balance is used if we can assume that all released nutrients are stored in the root zone and are available for plant uptake; whereas the instantaneous balance is valid under the assumption that only nutrients released in the current time step are available for uptake. Cumulative and instantaneous balances represent extreme ends of the uptake scenarios; therefore, interpretation of the results should rely on both balances. The cumulative and instantaneous nutrient balances (Appendix A.5.3) are calculated on an area-based nutrient supply implying that each square meter of the compartment is equally relevant as a nutrient source for a tree. This holds well for a mature plantation with a closed canopy but is not valid for the initial plantation stage when tree seedlings have small root systems. Therefore, we also calculate a tree-wise nutrient balance, which takes account of the area from which a tree can extract nutrients. This is dependent on the canopy size (Figure 4). After the canopy closure the tree-wise nutrient balance equals to the stand nutrient balance, but before the closure the tree-wise balance leads to nutrient deficiency more easily than the stand-wise nutrient balance.



**Figure 4.** Tree-wise nutrient balance for N, P and K. The tree-wise nutrient balance allows us to consider available nutrient reservoirs within the reach of the root system before canopy closure. Therefore, even though the area-based nutrient balance would suggest an adequate nutrient supply, the individual tree might suffer deficiency. The red area between the supply and demand curves indicates deficiency.

### 2.5. Model Testing

We used the data presented by Hoojier et al. [5] and Evans et al. [9] to test the performance of the Plantation Simulator. Table 3 in Hoojier et al. [5] presents the mean and standard deviation of *WT* and subsidence from 21 *Acacia crassicaarpa* sites located on peatlands in Riau, Indonesia. The paper contains, without a specified location, the mean and standard deviation of the peat bulk density, and a record that the bulk density increases by  $45 \text{ kg m}^{-3}$  in 15 years. Evans et al. [9] present a uniquely large dataset of peat subsidence with respect to mean *WT* (see Figure 2 in [9]). However, this paper does not contain information about the peat bulk density; we therefore derived the value for initial bulk density from older plantation reported in [5].

Neither of the studies give explicit information about the tree stand nor its development. We simulated the *Acacia* stand dynamics using the growth and yield model for *Acacia mangium* [26,27], assuming a constant rate of mortality, and adjusted the dominant height development. Classically the rotation length is set to the age when the mean annual increment (MAI) and the current annual increment (CAI) of the stand intersect. We adjusted the dominant height model parameter values so that they give a height of 21 m (typical height of harvestable stand) at the age of 5 years and produce an intersection of MAI and CAI between the ages of 4 and 5 years. The growth and yield model and its parameterization are presented in detail in the Appendixes A.1.1 and A.1.2.

Nutrient demand and litter production depend on how trees allocate biomass to bark, branches, foliage, roots and stems as all these components have distinctively different nutrient contents. A full set of allometric equations for all these biomass components are not, to our knowledge, publicly available for *Acacia crassicaarpa*. Therefore, we composed the allometric functions calculating the aboveground biomass function specially made for *A. crassicaarpa* [28] and then assuming that biomass is distributed among the components as described by Krisnawati et al. [29] for *A. mangium*. A more detailed description of the procedure, the biomass equations and parameters are presented in Appendix A.2.

A Monte Carlo simulation set was conducted to fill the data gaps with plausible site and stand characteristics. We lifted parameter values from normal distribution with given mean and standard deviation (Table 1). For mortality rate we assumed a uniform distribution. We ran the model for 15 yrs, i.e., three full rotations. A monthly *WT* record

was generated from the reported mean *WT* and assuming 20% standard deviation from the mean with annual dry/wet season cycle [5]. Because each simulation starts from planting, all the stands at a given time point are of equal age, unlike in the measured subsidence dataset. Therefore, a random 10 yrs subset of the simulation results was taken to ensure that the results are independent of the stand age, and thus comparable to the reported field subsidence data. The simulated subsidence accounts for the peat surface elevation change resulting from the simulated decrease in soil organic matter stock, long-term compaction, and short-term shrinking and swelling caused by *WT* fluctuation. A detailed description of the subsidence calculation is given in the Appendix A.3.4. The overall ecosystem C balance was calculated as the C storage change in soil and the change in stand above-ground biomass C, excluding the commercially usable stems (Appendix A.3.5).

**Table 1.** Mean and standard deviation (in brackets) of the parameters in the Monte Carlo simulations. Normal distributions were assumed for all variables except mortality rate, which was assumed to have a uniform distribution.

	Hoojier et al. [5]	Evans et al. [9]
Number of sites	21	210
Number of runs per site	50	50
Rotation length, yrs	5	5
Number of rotations	3	3
Site index	20 (3.5)	20 (3.5)
Mortality rate, stems month <sup>-1</sup>	range 1...20	range 1...20
Initial bulk density, kg m <sup>3</sup>	89 (18)	110 (22)
<i>WT</i>	as reported	as reported

After demonstrated plausibility from the mass balance viewpoint we constructed the N, P and K balance for each simulation and identified the adequacy of nutrient supply with respect to the stand nutrient demand. The timing and quantity of nutrient deficiency was recorded, and the need for fertilization was identified. The effects of each of the input variables in the Monte Carlo simulation (site index, mortality rate, peat bulk density and mean *WT*) on the subsidence rate, P balance and C balance were assessed using frequency distribution plots.

## 2.6. Scenario Assessment

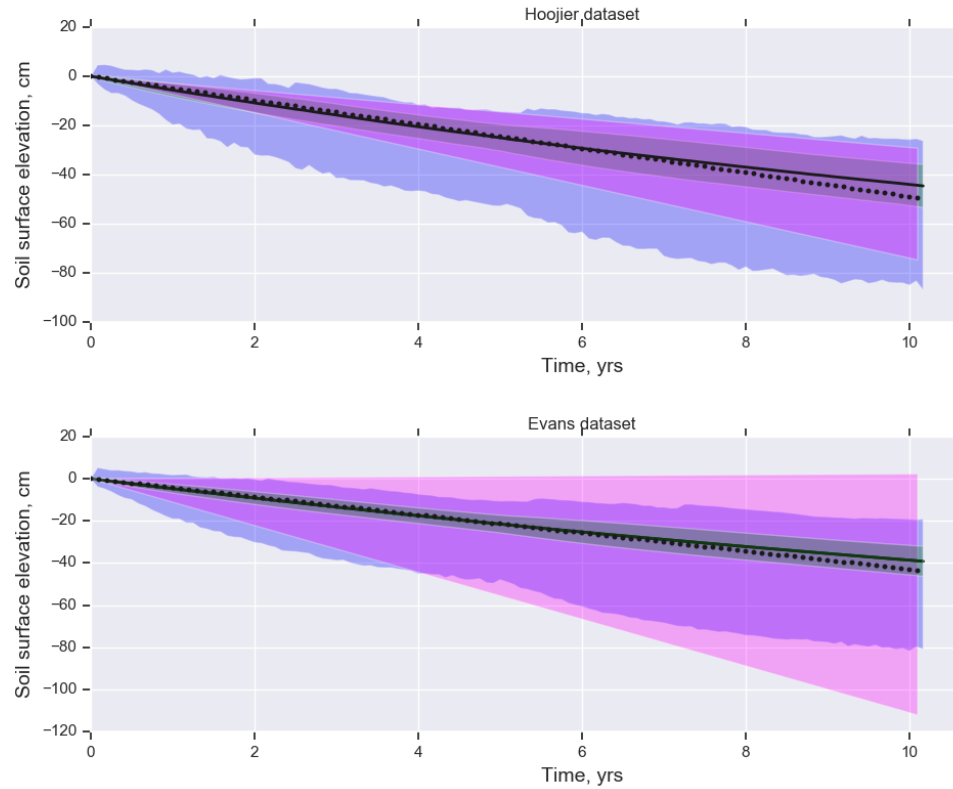
The parameterized and tested model was applied for two *WT* schemes which describe the effects of a change in *WT* from a mean depth of  $-0.80$  m observed by Jauhiainen et al. [7] for *Acacia* plantation to a mean of  $-0.40$  m, based on the Indonesian government regulation (SK.22/PPKL/PKG/PKL.0/7/2017). The nutritional consequences of raising the *WT* were identified. To cover different site and stand characteristics, we ran 200 simulations with varying site index, mortality rate and peat bulk density for low (mean *WT*  $-0.8$  m) and high *WT* (mean *WT*  $-0.4$  m) scenarios. Consequences for stand subsidence, C balance and fertilizer need were quantified.

## 3. Results

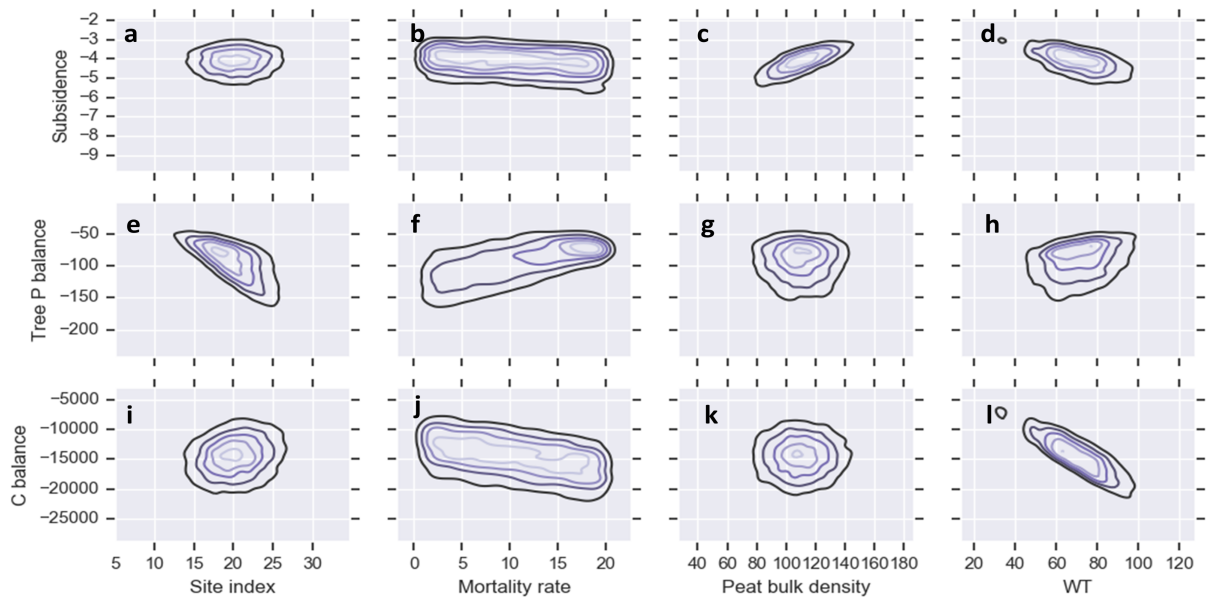
### 3.1. Testing the Mass Balance Using Published Subsidence Data

The Plantation Simulator successfully predicted both the mean and the range of the peat subsidence in an *Acacia* plantation, based on standard plantation water and stand management practices (Figure 5). The simulation set shows that the model satisfactorily covers the variation in the Hoojier et al. [5] dataset, which included detailed site-specific input data. However, the model missed the extremes in the Evans et al. [9] dataset, where considerably less input information was provided. In both cases, the mean subsidence was remarkably well predicted. In the simulation set the unknown site variables (site index, mortality rate and peat bulk density) were lifted from probability distributions, which

propagates variation into the model target variables as described in Figure 6. Subsidence rate was correlated with *WT* and with initial peat bulk density. The good match between the measured and modelled subsidence provides a plausible basis for the nutrient balance calculation, because the nutrient dynamics in deep-peat sites depend on the same biogeochemical processes as the mass balance dynamics reflected by the subsidence.



**Figure 5.** Measured (range in purple, mean as dotted line) and modelled subsidence (range in blue, mean as solid black line).

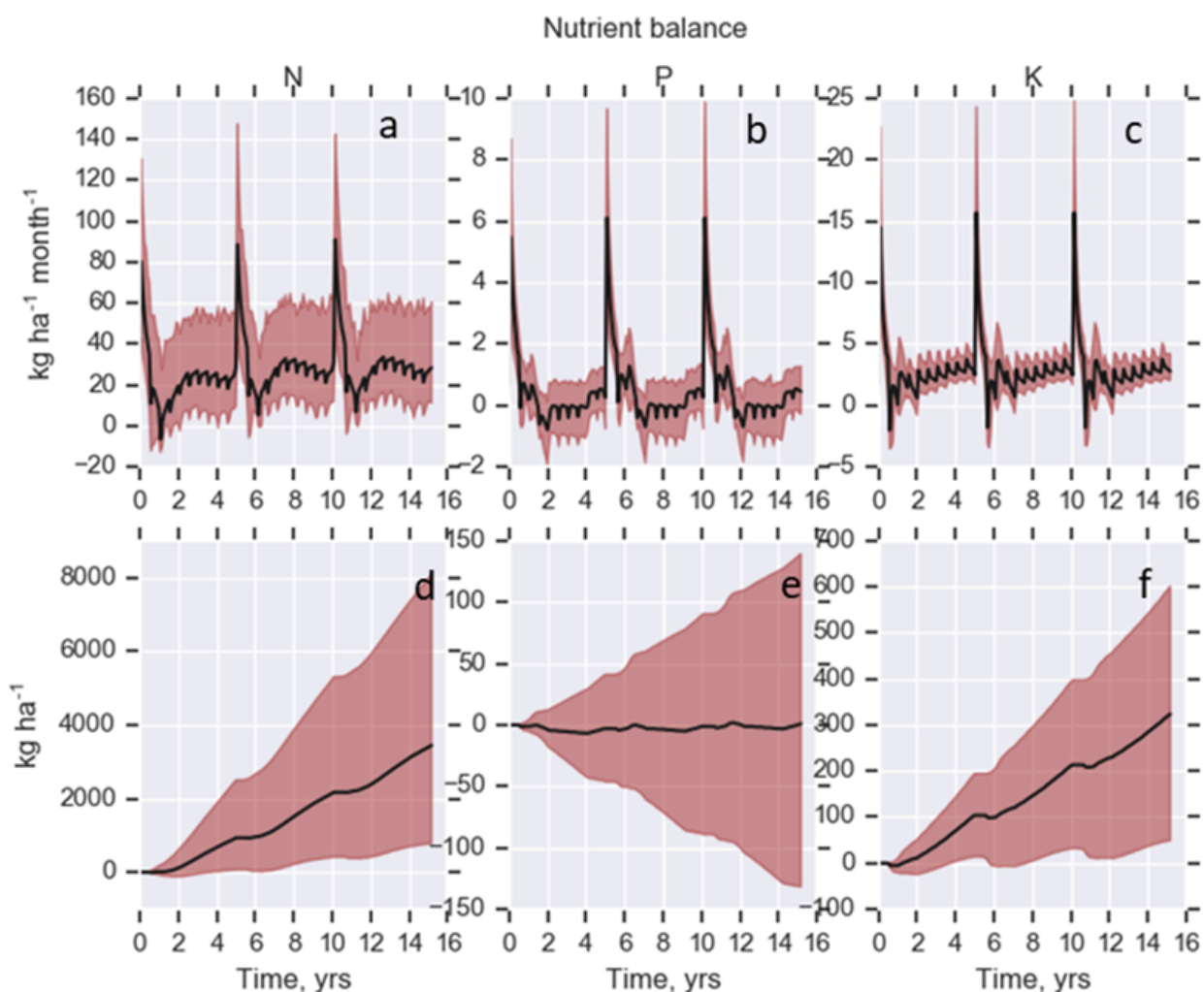


**Figure 6.** Effect of site index (m at index age of 5 years) (a,e,i), mortality rate (stems ha<sup>-1</sup> month<sup>-1</sup>) (b,f,j), peat bulk density (kg m<sup>-1</sup>) (c,g,k) and mean WT (cm, positive down) (d,h,l) on annual subsidence rate (cm yr<sup>-1</sup>) (row 1), tree-wise P balance (kg ha<sup>-1</sup>) (row 2) and site C balance (kg ha<sup>-1</sup> yr<sup>-1</sup>, negative value indicating C source) (row 3). The figure was constructed from the Monte Carlo simulations using the Evans et al. [9] dataset.



### 3.2. Nutrient and C Balances

Stand and tree-wise N, P and K balances were extracted from the Monte Carlo simulations based on the Evans et al. [9] dataset (Figure 7). The results indicate a large variation in the nutrient balances. With standard plantation management practices, N and K supply were mainly adequate for production of plantation biomass. In contrast, P supply is likely to be the growth limiting factor. On average, P demand and supply were equal but in half of the cases P balance was negative (Figure 7b,e). Site index, mortality rate and WT affected the P balance (Figure 6 e,f,h). Increasing nutrient demand with increasing site index led to a more negative P balance. The positive correlation between P balance and mortality rate indicates decreasing competition for nutrient resources with increasing mortality. However high mortality opens gaps in the stand and allows nutrient uptake by ground vegetation, which can depress P balance in the highest mortality rates (Figure 6f). Higher WT tended to have a negative impact on P balance but a positive impact on C balance (Figure 6h,l).

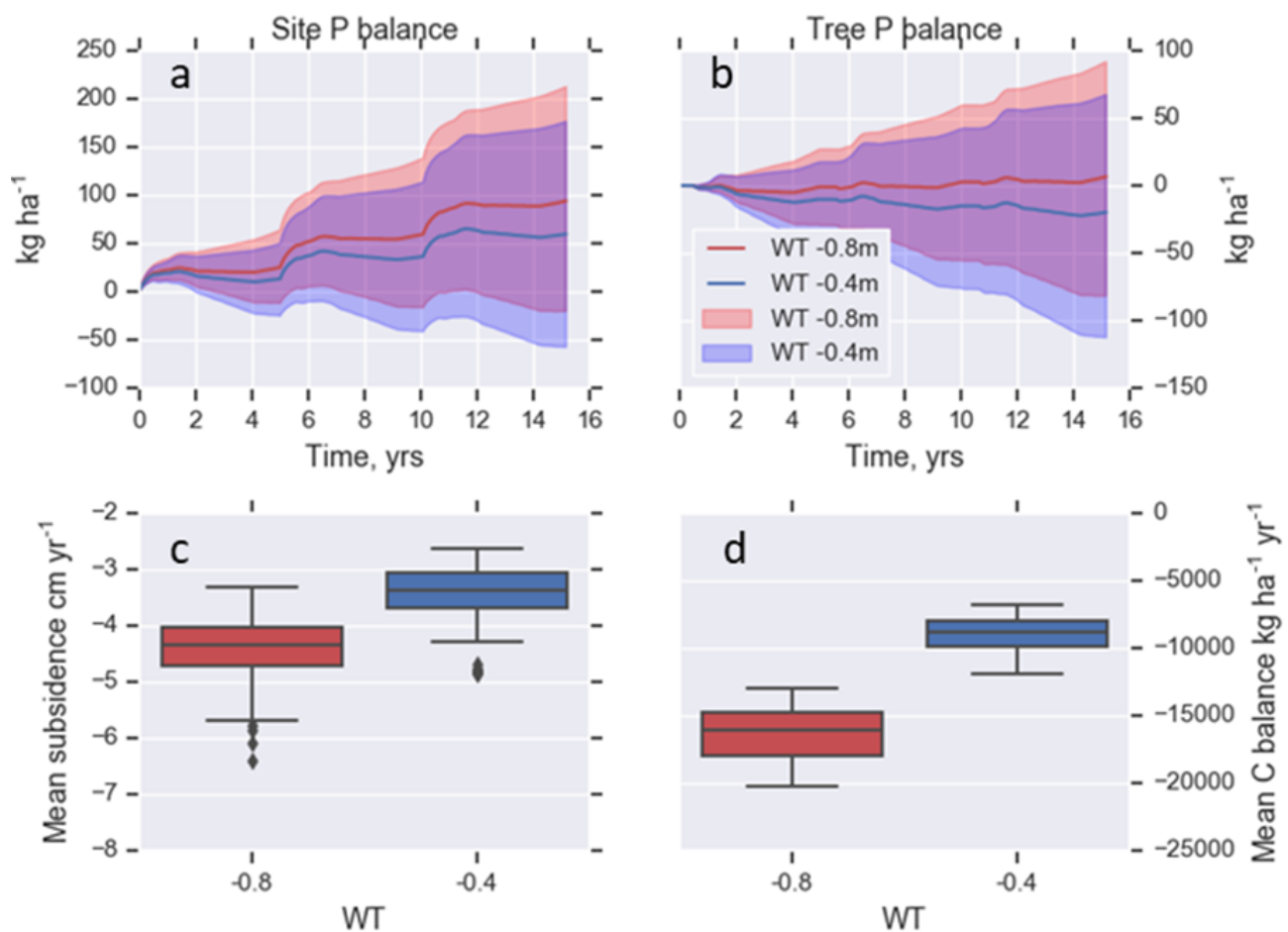


**Figure 7.** N, P and K balance calculated based on standard plantation management practices, using data from the Evans et al. [9] dataset. The simulation period covers 15 years including three full rotations from planting to harvesting. The upper panels describe the instantaneous stand-wise N (a), P (b) and K (c) balance (difference between nutrient supply and demand), lower panels describe the cumulative tree-wise N (d), P (e) and K (f) balance. Negative values in all cases indicate that nutrient supply is smaller than the demand. The red area shows the range, and the solid black line shows the mean.

### 3.3. Scenario Assessment: Raising the Water Table

We applied the Plantation Simulator to identify the nutrient balance change caused by raising WT from a mean of  $-0.80$  m to  $-0.40$  m. Here we concentrate on P, because it was

identified to be the main growth limiting nutrient. The cumulative stand-wise P balance remained positive, but decreased by  $50 \text{ kg ha}^{-1}$ . The tree-wise cumulative P balance changed from being marginally positive ( $5 \text{ kg ha}^{-1}$ ) to negative ( $-17 \text{ kg ha}^{-1}$ ), implying that the internal supply of P from peat mineralization and nutrient recycling would not be sufficient to achieve the rates of tree growth assumed in the simulation (Figure 8a,b). Under the  $-0.40 \text{ m}$  scenario, it would therefore be necessary to close this nutritional gap, of an estimated 10 to  $17 \text{ kg P ha}^{-1} \text{ rotation}^{-1}$ , with increased fertilization. On the other hand, raising the WT reduced subsidence from  $4.4 \text{ cm yr}^{-1}$  to  $3.3 \text{ cm yr}^{-1}$  (Figure 8c), and reduced carbon loss from 17 to  $9 \text{ Mg ha}^{-1} \text{ yr}^{-1}$  (Figure 8d).



**Figure 8.** (a) Effects of alternative WT scenarios on stand P balance, (b) tree P balance, (c) annual subsidence and (d) C balance (negative value implies C source).

## 4. Discussion

### 4.1. Need for a Simulation Model

Rates of nutrient consumption are high in tropical short rotation tree plantations, and there is a risk that this could lead to the long-term depletion of soil nutrient resources [24]. This risk is exacerbated for pulpwood plantations that are typically located on infertile soils, and better understanding of the nutrient balance of these systems is therefore needed [30]. Complete nutrient balance studies for tropical plantations are scarce, with most studies dealing only with single nutrients, and focused on mineral soil sites [24,31]. Nutritional issues in plantations growing on peatlands are therefore poorly understood. Subsidence rates in drained tropical peatlands are high, typically  $3\text{--}5 \text{ cm yr}^{-1}$  [9]. Considering that plantation drainage depths are adjusted over time to maintain a constant WT relative to the peat surface, and that root layer thickness is constant, this continuously exposes

“new” organic matter reservoirs to decomposition and nutrient release, but with a high environmental cost. Raising *WT* decreases peat oxidation and subsequently limits the organic matter decomposition and subsidence, but at the same time reduces the supply of nutrients from decomposing peat [22] which may lead to stand nutrient limitation.

Managing plantations on peat to balance this trade-off between stand productivity and environmental sustainability requires a holistic approach to nutrient management that considers both anthropogenic and natural processes, and the effects of plantation management on these. Therefore, nutrient management of a plantation should incorporate water management, fertilization, weeding, litter and slash management including debarking of harvested stems, and evaluation of nutrient export with harvested biomass (e.g., [30,32]). The Plantation Simulator incorporates these activities within an integrated biogeochemical model that makes visible the different nutrient sources, such as internal translocation of nutrients, circulation of nutrients from litter back to the stand, competition by weeds, and fertilization (see Figure 3). By linking multiple nutrient cycles the model can identify limiting nutrients for growth, helping to focus on nutrient management practices, as argued by Mendham and White [24], and to optimize fertilizer use in order to minimize the associated environmental and economic costs.

A further strength of the Plantation Simulator is that it provides a causal explanation for subsidence, extending empirical studies in which subsidence is predicted solely as a function of *WT* [5,7,9]. Therefore, it enables a search for optional management schemes connected to combinations of *WT* control, fertilization, slash management, planting density, and weeding that all affect the nutrient and mass balance and thus help to maximise stand productivity whilst minimizing subsidence and associated CO<sub>2</sub> emissions. Compared to other plantation models [23–26], Plantation Simulator succeeds to introduce critical characteristics of peatland plantation production into the simulation, such as P and K balance, the role of peat and other organic matter decomposition in the nutrient supply, and the specific the environmental problems, including subsidence and elevated C emissions.

#### 4.2. Model Performance

In the test runs, the Plantation Simulator was able to replicate both the mean and the range of peat subsidence in a tropical pulpwood plantation. With the given range of inputs, the model produced subsidence rates ranging from 2.0 to 8.2 cm yr<sup>-1</sup>. This covers the previously reported peat subsidence rates for tropical plantations [5,9,33,34]. According to experimental studies, the aboveground biomass in a mature *A. crassicarpa* stand can vary from 51 to 81 Mg ha<sup>-1</sup> [35] or 63 ± 8.3 Mg ha<sup>-1</sup> [28]. Using the Plantation Simulator and applying the mean site index (21 m) and mortality rate (9 stems ha<sup>-1</sup> month<sup>-1</sup>), we obtained a mean above ground biomass of 66 Mg ha<sup>-1</sup> at maturity, very close to the reported biomass values. The good fit between the observed and modelled subsidence and biomass accumulation suggest that the stand mass balance is plausibly described and allows us to proceed to an assessment of nutrient balances (Figure 1).

The Evans et al. [9] subsidence dataset represents stand mass balance under normal plantation management, where the mean *WT* was managed at -0.7 m during the monitoring period that extended up to 10 years. In the long run, site productivity reflects a balance between growth resource supply and demand; thus, the growth of biomass is scaled according to the supply of the minimum growth factor following Liebig's law of the minimum [25]. Figure 7 clearly suggests that N and K supply are adequate, while P is growth limiting. P shortage was evident during the first three years of the rotation. This is likely due to the competition with weeds, small root systems in the early development of the stand, and a delay between litter fall and nutrient release from the stand litter [24,36]. This finding fits well with the current plantation fertilization practice, which has demonstrated the benefits of P fertilization at time of planting [24,30]. Bich et al. [37] emphasise the importance of P fertilization in *Acacia* plantations as it enhances microbial activity, decomposition rate, and microbial N fixation.

### 4.3. Scenario Assessment

When *WT* is raised, the model shows that nutrient supply from the decomposing peat is considerably reduced, and the stand growth finds, without compensating fertilization, a new equilibrium at lower growth level. In our scenarios, the mean *WT* was raised from  $-0.80$  m (mean in [7]) to  $-0.4$  m, reflecting recent Indonesian government regulations. The gap between the scenarios in P balance varied from  $10 \text{ kg ha}^{-1} \text{ rotation}^{-1}$  to  $17 \text{ kg ha}^{-1} \text{ rotation}^{-1}$  (Figure 8a,b). According to Mendham et al. [32] a universal P dose of  $10 \text{ kg ha}^{-1}$  is recommended in the planting of *A. mangium* in South Sumatra. Assuming that a similar dose is applied to *A. crassiparva*, this suggests that (at most) compensation of the raised *WT* would require a doubling of the current fertilization rate.

### 4.4. Uncertainty

Each module of the Plantation Simulator contains different levels of uncertainty. The growth and yield module (Appendix A.1.1) represents a traditional whole-stand model, where the stand growth is driven by  $H_{dom}$  and diameter distribution change. Even though currently tree-level growth and yield models are preferred due to their flexibility, stand level models are still suitable for modelling single-species and even-aged stands [38], such as pulp wood plantations. In this application we could not use the experimentally derived growth and yield parameters for *A. crassiparva* because of the confidentiality of plantation company data. Instead we modified parameter values using those reported for *A. mangium* [26,27] with the exception that the  $H_{dom}$  parameters ( $b_{11}$  and  $b_{12}$ , Table A1) were adjusted so that the production scheme became realistic in terms of rotation time. While we are unable to rigorously evaluate how well these parameters fit for *A. crassiparva* in the absence of direct observations, we did find that the simulation as a whole produced plausible results. Omitting the parameterization problem, the growth and yield module *per se* contains rather low uncertainty, as the growth is easily verifiable using standard plantation inventory data. Thereafter, the relevant parameters affecting mortality rate, height, basal area and diameter development, can be easily modified accordingly. This is typically the first step in the application of the Plantation Simulator.

Biomass models (Appendix A.2) are usually based on much smaller datasets than growth and yield models, because measurement of biomass components is laborious [38]. Therefore, uncertainty of the biomass module may be slightly higher than that in the growth and yield module, although the allometric relationships within two stands of the same species tend to be rather stable if the stand density is similar [25]. This is particularly true for plantations with controlled genetic material and standardized stand management practices. It is clear, however, that a species-specific additive biomass model that includes bark, branch, foliage, roots and stems for *A. crassiparva* would improve the accuracy of the nutrient balance estimates.

Decomposition is an essential part of nutrient cycling [30], and a major source of nutrients in drained deep peat sites. Decomposition of organic matter is a complex phenomenon, where not only original substances decompose, but also new substances are generated [39]; therefore, process-based decomposition models typically have rather a large uncertainty if site-specific input data are limited [40]. The Plantation Simulator considers separately decomposition and storage for *CWD* (Appendix A.3.1), stand litter (Appendix A.3.2) and peat (Appendix A.3.3). *CWD* model [41] applies empirical approach where the decomposition rate depends on mean air temperature, stem diameter and initial wood density. Stand litter is decomposed using the mechanistic Romul model [42]. An empirical carbon emission function determined for *Acacia* plantations in tropical peatlands was used to estimate the total decomposition including all organic matter components [7]. To allocate decomposition to *CWD*, stand litter and peat, we subtracted the calculated C emissions of *CWD* model and Romul model from the total C emission. The remaining emission represented the peat decomposition. This structure decreases uncertainty of the decomposition module as a whole, because it frames the total decomposition closely to the

range observed by Jauhiainen et al. [7] for *A. crassicarpa* plantation on tropical peat and in the same area.

Nutrient demand module (Appendix A.5.1) contains less uncertainty than the nutrient supply module (Appendix A.5.2), because nutrient demand is closely related to stand development. A simulation with site index (21 m) and mortality rate (9 stems ha<sup>-1</sup> month<sup>-1</sup>), shows that two thirds of the P uptake ends up in foliage and branches. This emphasizes the importance of leaving logging residues on site after harvesting [37]. In our application the litterfall rate is estimated based on the longevity of each biomass component, with parameters based on expert knowledge. The strength of this approach is that the litter production follows the growth and biomass component models and all components will eventually be transferred to litter. This narrows down the uncertainty range. Nutrient supply from the decomposing stand litter and from decomposing peat were the main sources of P supply contributing three quarters of the cumulative P supply during one rotation. The uncertainties in the decomposition models propagate to the nutrient supply estimates.

In this application C balance was calculated as a C storage change in soil and biomass, but omitting the contribution of stems, which are used for pulp production. Thus, the C balance includes biomass of weeds and unmerchantable parts of trees, and subsequently provides a C balance estimate coherent to our mass balance approach. The IPCC emission factors for tropical *Acacia* plantation on drained peatland are based on soil C storage change (−25 to −15 Mg CO<sub>2</sub>-C ha<sup>-1</sup> yr<sup>-1</sup>), equivalent to 15 to 25 Mg CO<sub>2</sub>-C ha<sup>-1</sup> yr<sup>-1</sup> of emission [5,7,43,44]. In our estimates that account for the unmerchantable parts of trees, the balance varied between −20 and −10 Mg CO<sub>2</sub>-C ha<sup>-1</sup> yr<sup>-1</sup> (Figure 6i) indicating a slightly smaller C source than the IPCC values. Using the Plantation Simulator and applying the mean site index (21 m), mortality rate (9 stems ha<sup>-1</sup> month<sup>-1</sup>), and mean WT of −0.8 m, the C balance accounting only for soil Equation (A32) was −19 Mg CO<sub>2</sub>-C ha<sup>-1</sup> yr<sup>-1</sup>, omitting the stems Equation (A33) −14 Mg CO<sub>2</sub>-C ha<sup>-1</sup> yr<sup>-1</sup> and including the stems Equation (A34) −11 Mg CO<sub>2</sub>-C ha<sup>-1</sup> yr<sup>-1</sup>. The C balance estimates can be considered realistic, and therefore the Plantation Simulator can be a useful tool in producing more accurate net C emission estimates, because it takes into account the effect of stand properties, as well as stand and WT management. Future development of Plantation Simulator includes incorporation of hydrology, photosynthesis and net primary production modules to the model, and changing from stand-based to grid-based solution to facilitate simultaneous simulation of large areas.

**Author Contributions:** Conceptualization, A.L., M.P., H.H.; methodology, A.L., M.P., I.U., H.H.; software, A.L.; validation, A.L.; formal analysis, A.L.; investigation, A.L.; resources, A.L.; data curation, A.L.; writing—original draft preparation, A.L., M.P., S.P., C.E.; writing—review and editing, all authors; visualization, A.L. All authors have read and agreed to the published version of the manuscript.

**Funding:** This research received funding from Academy of Finland (project numbers 311925 and 325168).

**Institutional Review Board Statement:** Not applicable.

**Informed Consent Statement:** Not applicable.

**Data Availability Statement:** Plantation simulator has been programmed using Python 3.7. The source code is openly available in <https://github.com/annamarilauren> (accessed on 15 February 2021). The repository also contains a parameter file and readme-file for instructions to running the model.

**Acknowledgments:** We thank Independent Peatland Expert Working Group of Asia Pacific Resources International Ltd (of which AL, SP and CE are or were members) for discussions concerning model needs and possible applications, and APRIL's staff for sharing their knowledge on plantation management.

**Conflicts of Interest:** The authors declare no conflict of interest. The funders had no role in the design of the study; in the collection, analyses, or interpretation of data; in the writing of the manuscript, or in the decision to publish the results.



## Appendix A. Plantation Simulator Description

### Appendix A.1. Stand

#### Appendix A.1.1. Stand Growth and Yield

Growth and yield model, running in monthly time step, is the core of the Plantation Simulator. Growth and yield are computed using a classical dominant height–diameter distribution approach presented by Forss et al. [26,27] originally for upland *Acacia mangium*. The stand level variables including dominant height ( $H_{dom}$ , m) and basal area ( $G$ ,  $m^2 ha^{-1}$ ) are computed first. In this application we apply constant rate of mortality ( $M_r$ , stems  $yr^{-1}$ ), and thus the stocking ( $N_s$ , stem number) is given as:

$$N_s = N_{ini} - M_r * A, \quad (A1)$$

where  $N_{ini}$  is the initial stocking (stems  $ha^{-1}$ ) and  $A$  is the stand age in years. The  $H_{dom}(A)$  is given so that it produces anamorphic growth curves for different site index ( $S_I$ ):

$$H_{dom} = S_I \left[ \frac{1 - e^{-b_{21}A}}{1 - e^{-b_{21}A_{ind}}} \right]^{b_{22}}, \quad (A2)$$

where  $S_I$  is the site index, which is determined as  $H_{dom}$  at index age ( $A_{ind}$ ), here 5 years;  $b_{21}$  and  $b_{22}$  are shape parameters for the height development (Table A1). The parameters are taken from Forss et al. [26,27] and shown in Table A1. Basal area ( $G$ ,  $m^2 ha^{-1}$ ) is calculated using  $H_{dom}$  and  $N_s$  as:

$$G = e^{\left[ b_{30} + \frac{b_{31}}{A} + b_{32} \ln(H_{dom}) + b_{33} \ln(N_s) \right]}, \quad (A3)$$

where  $b_{30}$ ,  $b_{31}$ ,  $b_{32}$ ,  $b_{33}$  are parameters. The basal area weighted mean diameter ( $d_{wmean}$ , cm) was computed from  $G$  and  $N_s$  as follows:

$$d_{wmean} = 2 \sqrt{\frac{10^4 G}{\pi N_s}}. \quad (A4)$$

In the following step, a two-parameter Weibull distribution was used to describe the breast height diameter ( $d_{bh}$ , cm) distribution for all time steps. The distribution parameters  $b_W$  and  $c_W$  were derived for each time step from the mean diameter and age as:

$$b_W = b_{50} + b_{51} d_{wmean} + b_{52} A, \quad (A5)$$

$$c_W = e^{(b_{60} + b_{61} A)}, \quad (A6)$$

where  $b_{50}$ ,  $b_{51}$ ,  $b_{60}$ ,  $b_{61}$  are parameters. Number of stems in diameter class  $d$  ( $n(d)$ , diameter in cm) is then given as:

$$n(d) = N_s \frac{c_W}{b_W} \left( \frac{d}{b_W} \right)^{(c_W - 1)} e^{-\left( \frac{d}{b_W} \right)^{c_W}}. \quad (A7)$$

Thereafter, the individual tree height ( $h$ ), volume ( $v$ ) and merchantable volume ( $v_m$ ) are computed for each diameter class in the distribution. The parameter values for the individual tree height model ( $b_{100}$  and  $b_{101}$ ) depend on  $d_{wmean}$ ,  $H_{dom}$  and  $N$  as:

$$b_{100} = b_{80} + b_{81} d_{wmean} + b_{82} H_{dom}, \quad (A8)$$

$$b_{101} = b_{90} + b_{91} d_{wmean} + b_{92} H_{dom} + b_{92} \ln(N_s), \quad (A9)$$

where  $b_{80}$ ,  $b_{81}$ ,  $b_{82}$ ,  $b_{90}$ ,  $b_{91}$ ,  $b_{92}$ ,  $b_{93}$  are parameters. The tree height in diameter class  $d$  ( $h(d)$ , m) in the Weibull distribution is given as:



$$h(d) = 1.3 + b_{100}e^{-\frac{b_{101}}{d}}. \quad (\text{A10})$$

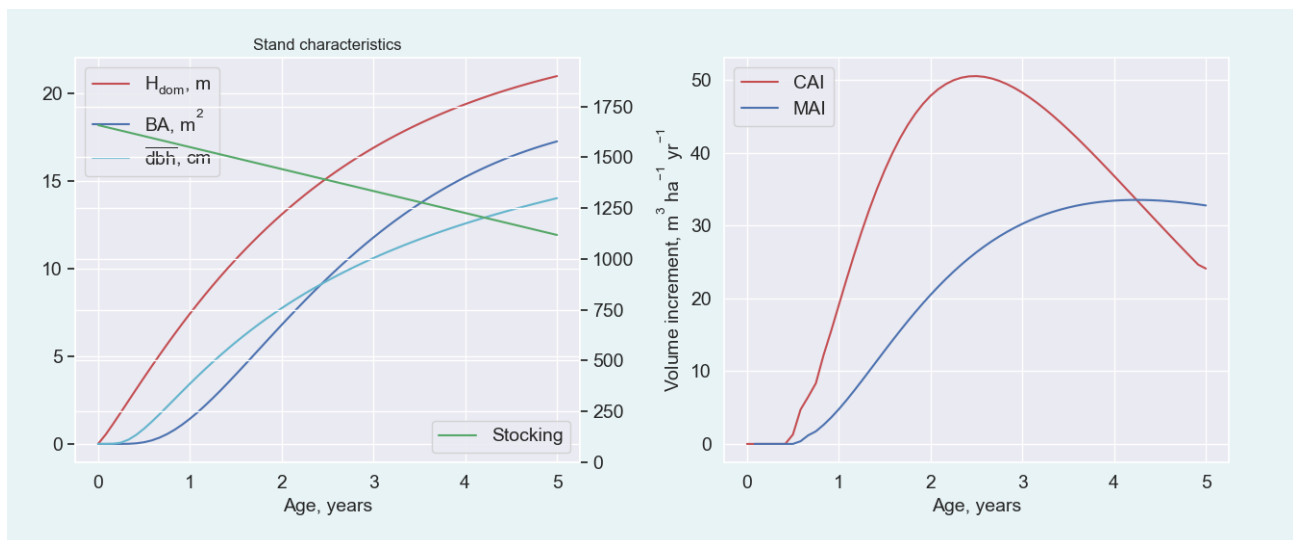
Volume of trees in diameter class  $d$  ( $v$ ,  $\text{m}^3 \text{ha}^{-1}$ ) is calculated using  $n(d)$ ,  $d$  and  $h(d)$ :

$$v(d) = n(d) * e^{(b_{110} + b_{111} \ln(d) + b_{112} h)}, \quad (\text{A11})$$

where  $b_{110}$ ,  $b_{111}$ ,  $b_{112}$  are parameters. Stand total volume ( $V$ ,  $\text{m}^3 \text{ha}^{-1}$ ) is computed by summing up all the diameter classes.

#### Appendix A.1.2. Parameterization of $H_{dom}$ Model

A species specific  $H_{dom}$  model for *Acacia crassicarpa* is not publicly available. Therefore, we deduced the shape parameters  $b_{21}$  and  $b_{22}$  for Equation (A2) using the following non-confidential facts:  $H_{dom}$  at harvesting time is 17...25 m and rotation time from planting to harvesting is 5 yrs. Optimal rotation time is at age when the mean annual increment (MAI) and current annual increment (CAI) intersect. First, we set the site index to 21 m and  $M_r$  to 9 stems  $\text{ha}^{-1} \text{month}^{-1}$ , computed the growth and yield model and plotted MAI and CAI. Then we iteratively adjusted  $b_{21}$  and  $b_{22}$  until MAI and CAI intersected between age 4 and 5 yrs (Figure A1). Here, MAI in the intersection point equals to  $33 \text{ m}^3 \text{ha}^{-1} \text{yr}^{-1}$ , which fits to the range reported for *A. mangium* [24].



**Figure A1.** Growth and yield model parameterized with *Acacia mangium* as described by Forss et al. [26,27], and adjusting the  $H_{dom}$  model Equation (A2) to produce the optimal rotation time to 5 years to estimate the *Acacia crassicarpa* production.

**Table A1.** Variables and parameters in the growth and yield module of the Plantation simulator.

Symbol	Description	Unit	Value
$N_{ini}$	Initial stocking	stems $\text{ha}^{-1}$	1666
$S_I$	Site index	m at $A_{ind}$	17...25
$M_r$	Mortality rate	stems $\text{ha}^{-1} \text{yr}^{-1}$	12...240
$N_s$	Stocking	stems $\text{ha}^{-1}$	500...1666
$A$	Stand age	yrs	0...5
$H_{dom}$	Dominant height	m	0...25
$G$	Basal area	$\text{m}^2 \text{ha}^{-1}$	0...25
$d_{wmean}$	Weighted mean diameter	cm	0...25
$d_{dist}$	Diameter distribution	$N_s$ in diameter $d$	-

Table A1. Cont.

Symbol	Description	Unit	Value
$A_{ind}$	Index age	yrs	5
$d$	Tree diameter	cm	0...40
$h$	Tree height	m	0...30
$b_{21}$	$H_{dom}$ parameter	-	0.5
$b_{22}$	$H_{dom}$ parameter	-	1.1
$b_{30}$	G parameter	-	-4.14724
$b_{31}$	G parameter	-	-2.07358
$b_{32}$	G parameter	-	0.99584
$b_{33}$	G parameter	-	0.62386
$b_w$	Diameter distribution parameter	-	Equation (A5)
$c_w$	Diameter distribution parameter	-	Equation (A6)
$b_{50}$	Diameter distribution parameter	-	0.00378
$b_{51}$	Diameter distribution parameter	-	1.06688
$b_{52}$	Diameter distribution parameter	-	0.09209
$b_{60}$	Diameter distribution parameter	-	1.49093
$b_{61}$	Diameter distribution parameter	-	-0.03053
$b_{80}$	Tree height parameter	-	-0.5929
$b_{81}$	Tree height parameter	-	-0.31894
$b_{82}$	Tree height parameter	-	1.48904
$b_{90}$	Tree height parameter	-	6.77843
$b_{91}$	Tree height parameter	-	-0.13929
$b_{92}$	Tree height parameter	-	0.2971
$b_{93}$	Tree height parameter	-	-0.72857
$b_{100}$	Tree height parameter	-	Equation (A8)
$b_{101}$	Tree height parameter	-	Equation (A9)
$b_{110}$	Tree volume parameter	-	-9.83466
$b_{111}$	Tree volume parameter	-	1.70518
$b_{112}$	Tree volume parameter	-	1.14496

#### Appendix A.2. Biomass and Litter

Biomass, its development and distribution among different tree components (bark, branch, foliage, and stem wood) is essential information when nutrient balance is calculated. Full set of allometric equations for biomass components were not available for *Acacia crassicaarpa*. Bi et al. [45] show additive biomass functions, where biomass depends on tree diameter, for several *Eucalyptus* and *Acacia species*:

$$M_i = e^{\beta_{i0}} d^{\beta_{i1}}, \quad (\text{A12})$$

where  $M_i$  is dry biomass (kg) in biomass component  $i$  (foliage, branch, and bark),  $\beta_{i0}$ ,  $\beta_{i1}$  are biomass parameters (see Table A2). The total stand biomass in the component  $i$  is computed by integrating over the diameter distribution Equation (A7). Chen et al. [28] present an equation for aboveground biomass for *A. crassicaarpa*, but the parameter values are not directly applicable, because the biomass is dependent on both tree diameter and height. To obtain  $\beta_{i0}$ ,  $\beta_{i1}$ , we first calculated the total aboveground biomass using the equation presented by Chen et al. [28]; and plugging in the tree diameter and tree height calculated using Equation (A10). The relative proportion of biomass component  $i$  from the total aboveground biomass were obtained from allometric equations for *Acacia mangium* [29]. Then we calculated all biomass components  $i$  for a diameter range 1 cm to 20 cm; and then fitted parameters  $\beta_{i0}$  and  $\beta_{i1}$  using minimum sum of squares -method. Parameter values are presented in Table A2. Stem biomass was obtained by multiplying the stand volume with the wood density ( $500 \text{ kg m}^{-3}$ ). Root biomass was assumed to be 20% of the above-ground biomass. Fine biomass was estimated to be 5% of the total root mass.

**Table A2.** Variables and parameters in the biomass and litter module of the Plantation simulator.

Symbol	Description	Unit	Value
<b>Biomass parameters</b>			
$\rho_{wood}$	Wood density	kg m <sup>-3</sup>	500
$gm_{max}$	Maximum green mass	kg ha <sup>-1</sup>	8000
$\beta_{bark0}$	Bark parameter	-	-3.421
$\beta_{bark1}$	Bark parameter	-	1.848
$\beta_{branch0}$	Branch parameter	-	-0.576
$\beta_{branch1}$	Branch parameter	-	1.282
$\beta_{foliage0}$	Foliage parameter	-	-0.143
$\beta_{foliage1}$	Foliage parameter	-	0.659
$b_{130}$	Weed parameter	kg ha <sup>-1</sup>	6000.0
$b_{131}$	Weed parameter	-	1.0
$A_{weeds}$	Weed age	years	
<b>Litter parameters</b>			
$M_i$	Mass in component i <sup>1</sup>	kg ha <sup>-1</sup>	
$l_{bark}$	Bark longevity	years	5
$l_{branch}$	Branch longevity	years	2
$l_{foliage}$	Foliage longevity	years	0.5
$l_{coarseroot}$	Coarseroot longevity	years	5
$l_{fineroot}$	fineroot longevity	years	0.25
$L_{il}$	Litter mass from living biomass	kg ha <sup>-1</sup>	
$L_{id}$	Litter mass from dead biomass	kg ha <sup>-1</sup>	
$L_{CWD}$	Coarse woody debris	kg ha <sup>-1</sup>	
<b>Nutrient parameters</b>			
	Nutrient J <sup>2</sup>		
$J_{bark}$	J concentration in bark	mass-%	1.30, 0.10, 0.33
$J_{branch}$	J concentration in branch	mass-%	0.30, 0.10, 0.15
$J_{foliage}$	J concentration in foliage	mass-%	2.20, 0.10, 0.40
$J_{coarseroot}$	J concentration in coarse roots	mass-%	0.30, 0.02, 0.05
$J_{fineroot}$	J concentration in fine roots	mass-%	3.00, 0.02, 0.05
$J_{stem}$	J concentration in stem	mass-%	0.30, 0.03, 0.03
$J_{weeds}$	J concentration in weeds	mass-%	1.30, 0.09, 0.45
$R_{Jacacia}$	J retranslocation Acacia	kg kg <sup>-1</sup>	0.20, 0.33, 0.64
$R_{Jweeds}$	J retranslocation weeds	kg kg <sup>-1</sup>	0.50, 0.5, 0.5
$J_{il}$	Litter nutrients from living biomass	kg ha <sup>-1</sup> time step <sup>-1</sup>	Equation (A17)
$J_{id}$	Litter nutrients from dead biomass	kg ha <sup>-1</sup> time step <sup>-1</sup>	Equation (A18)

1. Components i = [bark, branch, foliage, and fis, coarse roots, weeds above, weeds below]; 2. Nutrients J = [N, P, K].

Weeds and weeding play an important role in stand carbon and nutrient balance. Plantation simulator contains Weed module, which in a simple way describes development of weed biomass, litter production and interaction with stand as a function of time. The above ground weed biomass follows S-shape curve Equation (A2) and is parameterized according to approximate field observations. Below-ground weed biomass is set proportional to the above ground biomass (below/above ground ratio was set to 0.5).

$$M_{weeds} = b_{130}e^{\left(-\frac{b_{131}}{A_{weeds}}\right)}, \quad (A13)$$

where  $M_{weeds}$  is the dry above ground biomass of weeds (kg ha<sup>-1</sup>),  $b_{130}$  and  $b_{131}$  are parameters (Table A2), and  $A_{weeds}$  is the weed ages, i.e., time elapsed from the previous weeding. Here, the parameters values for  $b_{130}$  and  $b_{131}$  were 6000 and 1, respectively. This indicates that the weed biomass would approach asymptotically 6000 kg ha<sup>-1</sup>, and that in  $A_{weeds}$  of 1 year,  $M_{weeds}$  would be 2200 kg ha<sup>-1</sup>. The weed below-ground biomass was assumed to be 50% of the above-ground biomass.

Shading of the canopy reduces weed mass. This relationship is described with Maximum green mass –parameter ( $gm_{max}$ , value here  $8000 \text{ kg ha}^{-1}$ ), which sets the upper limit for the sum of the stand leaf mass and the above-ground weed mass. When the total green mass would exceed the  $gm_{max}$ , the above ground weed mass is reduced accordingly. Weeding kills all the above and below ground weed biomass and transfers it to litter. Thereafter the development of weeds starts from the beginning.

Equation (A12) describes the net biomass in each biomass component  $i$  ( $M_i$ ) at given time  $t$ . To obtain the amount of new biomass constructed in each time step we used the  $M_i$  and the longevity (life span,  $l_i$ , years) information. If, say foliage biomass, in time step  $t$  is  $5000 \text{ kg ha}^{-1}$ , and the longevity of foliage is 6 months (here 6 time steps), the current  $M_{foliage}$  must be a sum of the foliage growth in current time step and the five time steps before. Arranging all the time steps into a linear system of equations we can solve the biomass growth ( $g_i$ ,  $\text{kg ha}^{-1} \text{ time step}^{-1}$ ) as:

$$\begin{bmatrix} 1 & 0 & 0 & \cdots & 0 & 0 & 0 \\ 1 & 1 & 0 & \cdots & 0 & 0 & 0 \\ 1 & 1 & 1 & \cdots & 0 & 0 & 0 \\ \vdots & \vdots & \vdots & \ddots & \vdots & \vdots & \vdots \\ 0 & 0 & 0 & \cdots & 1 & 0 & 0 \\ 0 & 0 & 0 & \cdots & 1 & 1 & 0 \\ 0 & 0 & 0 & \cdots & 1 & 1 & 1 \end{bmatrix} \begin{bmatrix} g_{i \ t0} \\ g_{i \ t1} \\ g_{i \ t2} \\ \vdots \\ g_{i \ tn-2} \\ g_{i \ tn-1} \\ g_{i \ tn} \end{bmatrix} = \begin{bmatrix} M_{i \ t0} \\ M_{i \ t1} \\ M_{i \ t2} \\ \vdots \\ M_{i \ tn-2} \\ M_{i \ tn-1} \\ M_{i \ tn} \end{bmatrix}, \quad (\text{A14})$$

where the right hand side of the equation is the time series of biomass component  $i$  (vector  $M$  with length equal to number of time steps ( $tn$ ), Equation (A14)), the second term in the left hand side of the equation is the unknown biomass growth time series (denote vector  $g$ , length  $tn$ ), and the first term is a matrix ( $A$ , dimensions  $tn$  by  $tn$ ) describing the time steps contributing to the  $M_i(t)$ . The diagonal denotes the current time step, and the left-hand elements from the diagonal are filled with ones equal to number of time steps fitting inside the longevity value. Following the foliage example, each row contains 6 ones. Now, the biomass growth can be solved as:

$$g = A^{-1}M. \quad (\text{A15})$$

Biomass exceeding the longevity age is located to litter. Litter production in biomass component  $i$  from the living biomass ( $L_{i \ l}$ ,  $\text{kg ha}^{-1} \text{ dt}^{-1}$ ) is obtained from the biomass growth ( $g_i$ ,  $\text{kg ha}^{-1}$ ) and the longevity (life span,  $l_i$  years) for each time step ( $t$ ) as follows:

$$L_{i \ l} = g_i(t - l_i). \quad (\text{A16})$$

Before the litterfall, the senescing tissues transfer a proportion of the nutrients into the rest of the plant in retranslocation. Only the litter from the living biomass is subject to retranslocation. Therefore, the nutrient  $J$  ( $J = \text{N, P, K}$ ) content in the living litter component  $i \ l$  in plant  $p$  (*Acacia*, weeds) is:

$$J_{i \ l} = L_{i \ l}(1 - R_{Jp})\frac{J_i}{100}, \quad (\text{A17})$$

where  $J_{i \ l}$  is nutrient  $J$  mass in biomass component  $i$  from living biomass ( $\text{kg ha}^{-1}$ ),  $L_{i \ l}$  is litter mass in component  $i$  ( $\text{kg ha}^{-1}$ ),  $R_{Jp}$  is a proportion of retranslocation for nutrient  $J$  for plant  $p$ , and  $J_i$  is nutrient  $J$  concentration in the litter component  $i$  (%). The parameter values are available in Table A2.

$$J_{i \ d} = L_{i \ d}\frac{J_i}{100}, \quad (\text{A18})$$

where  $J_{i \ d}$  is the nutrient mass in biomass component  $i$  from dead biomass ( $\text{kg ha}^{-1}$ ). Stems are transferred to coarse woody debris pool ( $L_{CWD}$ ,  $\text{kg ha}^{-1}$ ). When weeding is done, both

above and below-ground weed mass is transferred to the respective litter pools without retranslocation.

### Appendix A.3. Soil and Peat

Organic matter is decomposed in three different procedures. A simple exponential decay model is applied for coarse woody debris as described by MacKenzen et al. [41]. The decomposition rate depends on temperature, stem diameter and initial wood density. The litter originating from living or dead biomass and produced by the stand and weeds is assumed to decompose under aerobic conditions. Widely used Romul-decomposition model [42] was applied to compute for the carbon and nutrient dynamics of the litter. An empirical carbon emission function, determined for *Acacia* plantations in tropical peatlands, was used to estimate the total heterotrophic C emissions from soil [7]. Peat decomposition was estimated by subtracting the C emissions produced by the litter decomposition from the total emissions.

General inputs to the decomposition module are soil temperature ( $T_{soil}$ ) and water table ( $WT$ ). In tropics the fluctuation on air temperature is small, and  $T_{soil}$  is more dependent on shading than meteorological conditions. Therefore,  $T_{soil}$  in open area ( $T_{open}$ ) and under a closed canopy ( $T_{close}$ ) were given as parameters. Monthly  $T_{soil}$  was obtained from the above-ground green biomass as:

$$T_{soil} = T_{open} - \frac{M_{foliage} + M_{weeds\ above}}{gm_{max}} * (T_{open} - T_{close}), \quad (A19)$$

where  $M_{foliage}$  is *Acacia* stand foliar mass,  $M_{weed\ above}$  is the above ground weed biomass and  $gm_{max}$  is the maximum green mass in the stand (see Table A2). In this study, we did not apply hydrological simulation (because lack of data), but instead we gave the monthly  $WT$  as an exogenic input. Monthly  $WT$  values were lifted from a normal distribution with given mean and standard deviation.

#### Appendix A.3.1. Coarse Woody Debris (CWD) Decomposition Module

CWD decomposition is accounted by using single-exponential model presented by MacKenzen et al. [41]. The rate of decomposition ( $k_{CWD}$ ) is dependent on mean annual temperature, diameter and density of stem:

$$k_{CWD} = 0.07816 + 0.010413T_{a\ mean} + 0.002012d - 0.00016749\rho_{wood}, \quad (A20)$$

where  $T_{a\ mean}$  is the mean air temperature ( $^{\circ}C$ ),  $d$  is the stem breast height diameter (cm) and  $\rho_{wood}$  is the density of wood ( $kg\ m^{-3}$ ) (Table A3). The monthly input cohort of CWD ( $L_{CWD}$ ,  $kg\ ha^{-1}$ ) comes from the mortality computed in growth and yield module. The CWD module accounts for the current mass, and the storages and release of C, N, P and K from the CWD. The mass of the remaining wood on the peat ( $P_{wood\ cohort}$ ,  $kg\ ha^{-1}$ ) in a CWD cohort produced in time step  $t$  for the remaining time steps is computed as:

$$P_{wood\ cohort} = L_{CWD}e^{-k_{CWD}[t]}, \quad (A21)$$

where  $[t]$  is a time vector (in years) from the current time step until the end of simulation. The total amount of CWD is obtained as a sum of all  $P_{wood\ cohort}$ . The decayed wood in the cohort ( $D_{wood\ cohort}$ ) was computed as:

$$D_{wood\ cohort} = L_{CWD}(1 - e^{-k_{CWD}[t]}), \quad (A22)$$

**Table A3.** Parameters and variables in the decomposition module of the Plantation simulator.

Symbol	Description	Unit	Value
$T_{open}$	Soil temperature in open area	°C	29
$T_{under}$	Soil temperature under canopy	°C	32
$WT$	Water table	m	
Coarse woody debris			
$L_{CWD}$	Coarse woody debris	kg ha <sup>-1</sup>	timestep <sup>-1</sup>
$T_{a_{mean}}$	Mean air temperature	°C	
$k_{CWD}$	Decay rate of CWD	year <sup>-1</sup>	
$P_{wood\ cohort}$	Remaining CWD in the cohort	kg ha <sup>-1</sup>	
$D_{wood\ cohort}$	Decayed CWD in the cohort	kg ha <sup>-1</sup> time step <sup>-1</sup>	
$c_{CWD}$	Carbon content in CWD	kg kg <sup>-1</sup>	0.5
$C_{emis\ CWD}$	C emission from CWD	kg ha <sup>-1</sup>	
$N_{CWD}$	N in CWD	kg ha <sup>-1</sup>	
$P_{CWD}$	P in CWD	kg ha <sup>-1</sup>	
$K_{CWD}$	K in CWD	kg ha <sup>-1</sup>	
$N_{rel\ CWD}$	N release from CWD	kg ha <sup>-1</sup> time step <sup>-1</sup>	
$P_{rel\ CWD}$	P release from CWD	kg ha <sup>-1</sup> time step <sup>-1</sup>	
$K_{rel\ CWD}$	K release from CWD	kg ha <sup>-1</sup> time step <sup>-1</sup>	
Romul: Litter decomposition			
$W$	Soil moisture relative to field capacity	-	1.28
$pH$	Soil pH	pH-unit	3.5
$T_{soil}$	Soil temperature	°C	29...32
Soil organic matter pools			
$JL_{above}$	Fresh litter, above ground	kg m <sup>-2</sup>	
$JL_{below}$	Fresh litter, below ground	kg m <sup>-2</sup>	
$JE_{above}$	Partly decomposed OM, above ground	kg m <sup>-2</sup>	
$JE_{below}$	Partly decomposed OM, below ground	kg m <sup>-2</sup>	
$JH$	Humus	kg m <sup>-2</sup>	
$JR$	Release of CO <sub>2</sub> and nutrients	kg ha <sup>-1</sup> time step <sup>-1</sup>	
$Q_{10}$	Temperature sensitivity	-	2
$T_{ref}$	Reference temperature	°C	28
$pdt$	Time step in peat decomposition	years	30/365
$CO_2\ efflux\ tot$	Total CO <sub>2</sub> from soil	kg m <sup>-2</sup>	
$J_{release\ peat}$	Release of nutrient J from peat		kg m <sup>-2</sup>
$co2toc$	Conversion factor from CO <sub>2</sub> to C	0.2727	
$ctomass$	Conversion factor from C to dry biomass	2	

The time derivative of  $D_{wood\ cohort}$  represents the decomposition in the time step, and the C emission for the time step ( $C_{efflux\ CWD}$  kg ha<sup>-1</sup>) is obtained by summing over all existing CWD cohorts:

$$C_{efflux\ CWD} = c_{CWD} \sum_{n=i}^{n_{cohorts}} \frac{d}{dt} D_{wood\ cohort} \quad (A23)$$

where  $c_{CWD}$  is the carbon content of CWD,  $n_{cohorts}$  is the number of CWD cohorts present in the stand. Above ground CWD and coarse roots are computed using the same algorithm. N, P and K release from CWD were assessed as a function of the decomposed CWD following the graphs presented by Palviainen and Finér [46]. Interpolation functions between the proportion of the remaining mass and nutrients were constructed from the following arrays:



$$fN(M) = \begin{cases} M_{remaining} : [1.0, 0.25, 0.20, 0.10, 0.0] \\ N_{remaining} : [1.0, 1.0, 0.90, 0.56, 0.0] \end{cases}, \quad (A24)$$

$$fP(M) = \begin{cases} M_{remaining} : [1.0, 0.81, 0.25, 0.20, 0.06, 0.0] \\ P_{remaining} : [1.0, 6.0, 0.48, 0.44, 0.20, 0.0] \end{cases}, \quad (A25)$$

$$fK(M) = \begin{cases} M_{remaining} : [1.0, 0.81, 0.60, 0.40, 0.20, 0.0] \\ K_{remaining} : [1.0, 0.40, 0.35, 0.30, 0.18, 0.0] \end{cases}, \quad (A26)$$

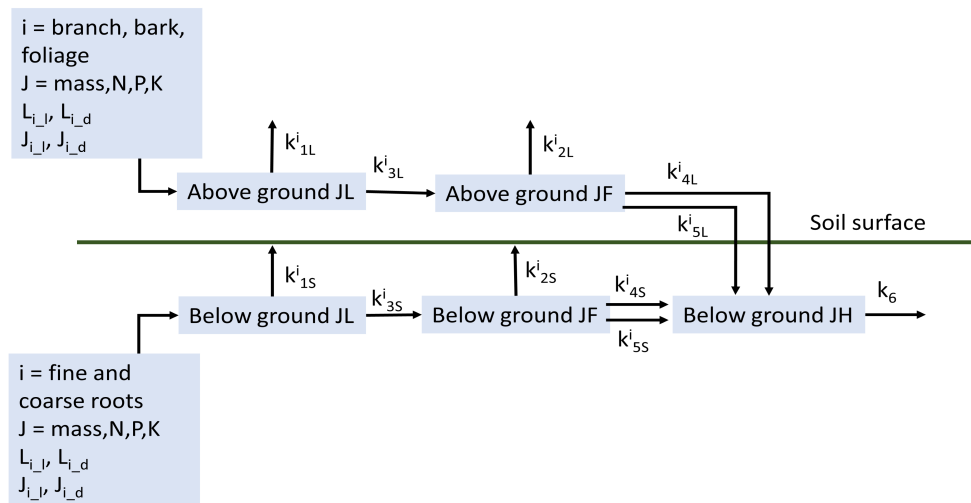
where  $fN(M)$ ,  $fP(M)$ ,  $fK(M)$  are interpolation functions. The remaining mass of N, P and K in each CWD cohort were obtained by applying Equation (A20) together with the interpolation functions, and the total nutrient storage in CWD ( $N_{CWD}$ ,  $P_{CWD}$ ,  $K_{CWD}$  kg ha<sup>-1</sup>) was obtained by summing over all the cohorts. Nutrient release from each CWD cohort was computed as a time derivative of the remaining nutrient variable. The total nutrient release from CWD was gain by summing the cohort-wise nutrient release ( $N_{rel\ CWD}$ ,  $P_{rel\ CWD}$ ,  $K_{rel\ CWD}$ , kg ha<sup>-1</sup> time step<sup>-1</sup>).

### Appendix A.3.2. Stand Litter Decomposition, Romul Module

*Acacia* stand and weeds produce litter on and under the soil surface. Because the plantations locate on drained peatlands it is reasonable to assume that the stand litter is decomposed mainly under oxic conditions. Widely used decomposition model Romul was applied to compute the organic matter, carbon and nutrient storage of these plant remnants, and the carbon and nutrient release from them [42,47]. Romul describes the decomposition of mass and release of nutrients as succession from fresh litter (*JL*) through partly decomposed *JF* storage into stabile humus (*JH*) (Figure A2). The rate of succession and mineralization ( $k_1 \dots k_6$ ) depends on ambient temperature and moisture, nitrogen, ash and lignin content of the remnant and soil pH. Variables, computation of the rate parameters and nitrogen processes are described in details by Chertov et al. [42]. Temperature and soil moisture are given as a time-step-wise array input to the model. Soil pH is given as a parameter (Table A3).

Input to Romul is given separately for litter originated from living and dead *Acacia* and weeds and in foliage, branch, bark and fis components (Figure A2). The input variables include litter mass ( $L_{i\ l}$ ,  $L_{i\ d}$ , see Table A2), and amounts of N, P and K ( $J_{i\ l}$ ,  $J_{i\ d}$ , see Table A2) in the litter. The nutrient contents of litter originating from living biomass are subject to nutrient retranslocation before the litter fall, and therefore they have smaller nutrient content than the litter originating from dead biomass (mortality or weeding). The *JL* decomposition is computed separately for each litter cohort, but all above ground litter are lumped together for the computation of *JF* and *JH* materials. Similarly, all the below ground litter are lumped for the computation of the below ground *JF* and *JH* materials. This module accounts for the current mass of organic material above and below ground, and the current carbon efflux originating from the *Acacia* and weed litter remnants.

The original version of Romul accounts for decomposition of mass and release of N. Here we assume that the release of P and K follow the dynamics of mass loss. Soil organic matter mass components, nutrient storage, CO<sub>2</sub> efflux and nutrient release are the main output of the Romul module (Table A3).



**Figure A2.** Flow chart of Romul-decomposition model as described by Chertov et al. [42]. The above- and below-ground litter fractions and their nutrient contents are imported from the biomass and litter module. Romul describes the decomposition of mass and release of nutrients as a succession from fresh litter (JL) through partly decomposed material (JF) to stabile humus (JH). The transfer rates between the pools ( $k_2, k_4$  and  $k_5$ ) and carbon release to the atmosphere ( $k_1, k_2$  and  $k_6$ ) are controlled by ambient temperature nitrogen, ash and lignin content of the remnant and soil pH.

### Appendix A.3.3. Peat Decomposition Module

Total heterotrophic  $\text{CO}_2$  efflux is computed as a function of water table depth using empirical equation presented by Jauhiainen et al. [7]. The measurements behind the study were conducted in April Asia peatland plantation under *Acacia crassicarpa* stand of varying age. Chamber technique was applied in the study. The total  $\text{CO}_2$  efflux ( $\text{CO}_2 \text{ efflux peat}$ ,  $\text{kg ha}^{-1} \text{ time step}^{-1}$ ) through a unit area of peat is calculated as [7]:

$$\text{CO}_2 \text{ efflux tot} = (71.1 * WT + 23.15) * 1000 * pdt * aQ_{10}, \quad (\text{A27})$$

where  $WT$  is water table depth (m, positive downwards),  $pdt$  is time step in years (30/365), and  $aQ_{10}$  is temperature adjustment:

$$aQ_{10} = Q_{10}^{\left(\frac{T_{\text{soil}} - T_{\text{ref}}}{10}\right)}, \quad (\text{A28})$$

where  $Q_{10}$  is a temperature sensitivity factor,  $T_{\text{soil}}$  is soil temperature and  $T_{\text{ref}}$  is reference temperature (Table A3). The model in Jauhiainen et al. [7] represents the total heterotrophic  $\text{CO}_2$  efflux through the soil surface, and does not differentiate the decomposition of peat from the decomposition of the *Acacia* remnants or coarse woody debris. In Plantation Simulator these components are kept apart because the *CWD*, *Acacia* and weed litters are the main C inputs to soil and therefore slow down the total C loss from soil. Thus, the peat decomposition is obtained by subtracting the heterotrophic  $\text{CO}_2$  efflux computed for the *Acacia* remnants and *CWD* from the total  $\text{CO}_2$  efflux.

$$\text{CO}_2 \text{ efflux peat} = \text{CO}_2 \text{ efflux tot} - \text{CO}_2 \text{ efflux stand litter} - \text{CO}_2 \text{ efflux CWD}, \quad (\text{A29})$$

$\text{CO}_2 \text{ efflux peat}$  was converted to C release and then to organic matter decomposition. Thereafter, the release of nutrient  $J$  ( $J = \text{N, P, K}$ ) was calculated stoichiometrically using the organic matter decomposition and the peat nutrient concentrations (Table A4).

$$J_{\text{release peat}} = \text{CO}_2 \text{ efflux peat} * \text{co2toc} * \text{ctomass} * \frac{J_{\text{peat}}}{100}, \quad (\text{A30})$$

where  $J_{release\ peat}$  is the N,P,K release in peat decomposition ( $\text{kg ha}^{-1} \text{ time step}^{-1}$ ),  $co2toc$  is conversion factor from  $\text{CO}_2$  to carbon (12/44) and  $ctomass$  is conversion factor from carbon to mass (Table A4).

**Table A4.** Parameters and variables in the nutrient module of the Plantation simulator.  $J$  refers to N, P and K and  $i$  to bark, branch, foliage, coarse roots, weeds above and weed below.

Symbol	Description	Unit	Value
$J_{net\ demand}$	Net demand	$\text{kg ha}^{-1} \text{ timestep}^{-1}$	
$J_{gross\ demand}$	Gross demand	$\text{kg ha}^{-1} \text{ timestep}^{-1}$	
$pJ_{fix}$	Share of microbial fixing from N demand	$\text{kg kg}^{-1}$	0.4
$J_{deposition}$	Atmospheric deposition of N, P, K	$\text{kg ha}^{-1} \text{ yr}^{-1}$	15.0, 0.1, 6.2
$J_{peat}$	Concentration of of N, P, K in peat	% mass	1.6, 0.015, 0.03
$J_{microbial\ fix}$	Microbial fixation of N	$\text{kg ha}^{-1} \text{ timestep}^{-1}$	
$J_{retrans\ i}$	Restranslocation of nutrients	$\text{kg ha}^{-1} \text{ timestep}^{-1}$	
$J_{release\ fert}$	Release of J from fertilizers	$\text{kg ha}^{-1} \text{ timestep}^{-1}$	
$F_{J\ nut\ cont}$	Fertilizer nutrient content	% of mass in N, $\text{P}_2\text{O}_5$ , $\text{K}_2\text{O}$	
$dose$	Fertilizer dose	$\text{g tree}^{-1}$	
$k_{fert}$	Decay rate of fertilizer	$\text{time step}^{-1}$	
$J_{tot\ supply}$	Total nutrient supply	$\text{kg ha}^{-1} \text{ timestep}^{-1}$	
$J_{tree\ supply}$	Tree-wise nutrient supply	$\text{kg ha}^{-1} \text{ timestep}^{-1}$	
$J_{balance}$	Total nutrient balance	$\text{kg ha}^{-1} \text{ timestep}^{-1}$	
$p_{tree\ coverage}$	Tree coverage	$\text{m}^2 \text{ m}^{-2}$	

#### Appendix A.3.4. Subsidence Module

Subsidence ie. the drawdown of soil surface results from (i) the change in the soil organic matter storage, and (ii) peat compaction and compression. Short term fluctuation in peat surface level can be caused by (iii) shrinking and swelling of peat resulting from changing water content. Even though shrinking and swelling are not relevant in long term assessment of subsidence, they have an important role in interpretation of field observations and assessment of model performance against measured data.

In the Plantation Simulator, the soil organic matter storage change is calculated as a sum of storage changes for *CWD*, *Acacia* and weed remnants and peat material as computed in the Decomposition module. Each of these model components keeps account for the current storage, inputs from vegetation, and outputs to the atmosphere.

Plantation operations and organic matter decomposition gradually increase the bulk density of the surface peat. The storage change and the initial peat bulk density are used to compute the subsidence after the oxidation (excluding compaction). By assuming known bulk density profile, the storage change can be converted to drawdown of soil surface. Here we assume a linear compaction scheme between the initial and final bulk density, both of which are given as a model parameter.

Removal of water from the peat matrix decreases peat volume in anisotropic way. Before cracking of In Plantation Simulator we compute water table above which we assume equilibrium water content profile in discrete layers. Then we compute the effect of water content on the peat void ratio as described by Camporese et al. [48].

$$e = \begin{cases} (\vartheta_0 + 1)^{1-\delta}(\vartheta + 1)^\delta - 1 & \text{if } \vartheta \leq \vartheta_0 \\ \vartheta & \text{if } \vartheta > \vartheta_0' \end{cases} \quad (\text{A31})$$

where  $e$  is void ratio in layer  $p$ ,  $\vartheta_0$  is threshold moisture ratio,  $\vartheta$  is moisture ratio,  $\delta$  is inverse of shrinkage geometry factor. This is further converted to bulk density changes, summed over the discrete layers and finally to volume and surface level change peat profile (Figure A3).

### Appendix A.3.5. Carbon Balance

C balance is computed in three different ways (Figure A3). Soil C balance ( $C_{bal\ soil}$ ,  $\text{kg ha}^{-1} \text{ yr}^{-1}$ ) gives the most conservative C balance estimate, and is obtained as soil C change in given time interval  $\Delta t$  (yrs):

$$C_{bal\ soil} = \frac{\Delta}{\Delta t} (CWD_C + Romul_C + Peat_C), \quad (\text{A32})$$

where  $CWD_C$ ,  $Romul_C$ , and  $Peat_C$  are C storages ( $\text{kg ha}^{-1}$ ) in coarse woody debris, stand litter and in peat. C balance that includes the above-ground biomass but omits the stems ( $C_{bal\ excl\ stems}$ ,  $\text{kg ha}^{-1} \text{ yr}^{-1}$ ) gives an estimate that is coherent to full mass balance used in Plantation Simulator whilst respecting the fact that the stems are used for paper with a short return time to atmosphere.  $C_{bal\ excl\ stems}$  for time interval  $\Delta t$  is obtained as:

$$C_{bal\ excl\ stems} = C_{bal\ soil} \frac{\Delta}{\Delta t} (Stand_C\ tot - Stem_C), \quad (\text{A33})$$

where  $Stand_C\ tot$  is the total C storage in stand including all biomass components of trees and weeds, and  $Stem_C$  is C storage in stems. C balance that is comparable to eddy covariance measurements at given time interval  $\Delta t$  includes all changes in C storage:

$$C_{bal\ all} = C_{bal\ soil} \frac{\Delta}{\Delta t} (Stand_C\ tot), \quad (\text{A34})$$

### Appendix A.4. Hydrology

In this study we considered water table as an exogeneous input. Monthly mean values were lifted from a known distribution for input of Plantation Simulator. Any hydrologic model can be used to replace this module to provide a time series of water tables for input of Plantation Simulator.

### Appendix A.5. Nutrition

#### Appendix A.5.1. Nutrient Demand

The net nutrient demand in the time step  $t$  was derived by multiplying the growth of *Acacia* stand and weed biomass component  $i$  ( $g_{it}$ , Equation (A15)) and nutrient concentration in biomass component  $i$  ( $J_{conc\ i} = N_i, P_i, K_i$  see Table A2). The stand net nutrient demand for time step  $t$ , nutrient  $J$  ( $J = N, P, K$ ) was calculated by summing over all the biomass components:

$$J_{net\ demand\ t} = \sum_i g_{it} J_{conc\ i}. \quad (\text{A35})$$

The net cumulative nutrient demand was obtained by integrating the instantaneous nutrient demand over the simulation time. Trees are continuously losing nutrient in the litter fall. This lost nutrient flux is not accounted in the net nutrient demand, which accounts only for the increment of nutrient content in the visible stand. To get a more realistic estimate of the real nutrient demand ( $J_{gross\ demand\ t}$ ,  $\text{kg ha}^{-1} \text{ time step}^{-1}$ ), we added the nutrient lost in the litter fall to the above net nutrient demand. The nutrients lost in the litter fall ( $J_{i\ l}$ ,  $\text{kg ha}^{-1} \text{ time step}^{-1}$ ) were computed using Equation (A17).

$$J_{gross\ demand\ t} = J_{net\ demand\ t} + \sum_i g_{it} J_{i\ l}, \quad (\text{A36})$$

The time series for the gross nutrient demand was integrated over the time to obtain the cumulative gross nutrient demand.

#### Appendix A.5.2. Nutrient Supply

Nutrient sources are atmospheric deposition, mineral weathering, microbiological fixing from the atmosphere (N for *Leguminosae* -species), internal retranslocation from senescing litter, nutrient release from decomposing organic matter, and nutrient release

from fertilizers. Atmospheric deposition is accounted as a constant input to the system according to parameter values  $N_{deposition}$ ,  $P_{deposition}$ , and  $K_{deposition}$  ( $\text{kg ha}^{-1} \text{ year}^{-1}$ , see Table A4). When simulating plantations situated on thick peat deposits, the mineral weathering can be omitted. In Acacia stand the microbial fixing of N can be important component of nutrition, because Acacia belongs to N fixing species. In optimal conditions, N fixing can provide up to 60 % of the stand N demand. However, N fixation is inhibited by low pH in the root layer, and pH in tropical peat can be as low as 3.5. The share of microbial fixing is given as a parameter in the simulation (Table A4).

$$J_{microbial\ fix} = p_{J\ fix} J_{gross\ demand\ t}, \quad (\text{A37})$$

where  $J_{microbial\ fix}$  is the nutrient supply through microbial fixing ( $\text{kg ha}^{-1} \text{ time step}^{-1}$ ),  $p_{J\ fix}$  is the share of microbial fixing from the nutrient demand (for N given as parameter, Table A4, and 0 for P and K). Nutrient retranslocation ( $J_{retransi}$ ,  $\text{kg ha}^{-1} \text{ time step}^{-1}$ ) for nutrient  $J$  ( $J = \text{N, P, K}$ ) from the litter component  $i$  in plant  $p$  (*Acacia*, weeds) is:

$$J_{retrans\ i} = L_{i\ l} R_{J\ p} \frac{J_i}{100}, \quad (\text{A38})$$

where  $J_i$  is nutrient  $J$  mass in biomass component  $i$  ( $\text{kg ha}^{-1}$ ),  $L_{i\ l}$  is litter mass in component  $i$  ( $\text{kg ha}^{-1}$ ),  $R_{J\ p}$  is a proportion of retranslocation for nutrient  $J$  for plant  $p$ , and  $J_i$  is nutrient  $J$  concentration in the litter component  $i$  (%). The parameter values are available in Table A2.

Nutrient release from decomposition of organic matter was derived as a sum of nutrient  $J$  release from CWD ( $J_{release\ CWD}$ ), stand and weed litter ( $J_{release\ litter}$ ), and peat ( $J_{release\ peat}$ ). In Plantation simulator the information about fertilization is given as mass of fertilizers given per tree at any time step. The cumulative amount of nutrient  $J$  released from fertilizer ( $J_{release\ fert}$ ,  $\text{kg ha}^{-1}$ ) in soil is calculated using the following exponential decay function:

$$J_{release\ fert} = \left( F_{J\ nut\ cont} * dose * conv * \frac{N_s}{1000} \right) \left( 1 - e^{-k_{fert}[t]} \right), \quad (\text{A39})$$

where  $F_{J\ nut\ cont}$  is the fertilizer nutrient content (in N,  $\text{P}_2\text{O}_5$  and  $\text{K}_2\text{O}$ ), dose is the amount of fertilizer given to a single tree ( $\text{g tree}^{-1}$ ),  $conv$  is a conversion factor from  $\text{P}_2\text{O}_5$  to P (0.42), and  $\text{K}_2\text{O}$  to K (0.83),  $N_s$  is standing stocking ( $\text{stems ha}^{-1}$ ),  $k_{fert}$  is the decay rate of nutrient  $J$  in the fertilizer  $F$ , and  $[t]$  is a time array. Release of nutrients in time step  $t$  was obtained as a time derivative of Equation (A39). Total nutrient supply ( $J_{tot\ supply}$ ,  $\text{kg ha}^{-1} \text{ time step}^{-1}$ ) in time step  $t$  was obtained as a sum of all the nutrient supply components.

$$J_{tot\ supply} = J_{deposition} + J_{microbial\ fix} + \sum_i J_{retrans\ i} + J_{rel\ CWD} + J_{release\ litter} + J_{release\ peat} + \frac{d}{dt} J_{release\ fert}, \quad (\text{A40})$$

### Appendix A.5.3. Nutrient Balance

Nutrient balance constructed from its components enables us to study the relative importance of each nutrient source and to identify where the nutrients are most needed. Area-based nutrient balance assumes that all nutrients are equally available for the stand no matter where the resources are located. This is most likely valid when the canopy is closed. Time-step-wise nutrient balance ( $J_{balance}$ ,  $\text{kg ha}^{-1} \text{ time step}^{-1}$ ) compares the nutrient supply and demand from the same time step as:

$$J_{balance} = J_{tot\ supply} - J_{gross\ demand\ t}. \quad (\text{A41})$$

This balance implicitly assumes that only the nutrients released at the same time step are available as a growth resource, and no nutrient storage in soil takes place. Cumulative nutrient balance, achieved by integrating Equation (A41) over the time, assumes that all

nutrients that were not used by the stand are available as a growth resource for the future time steps, and thus no nutrient loss takes place. The reality is somewhere between these approaches, therefore it is useful to study both of the balances at the same time.

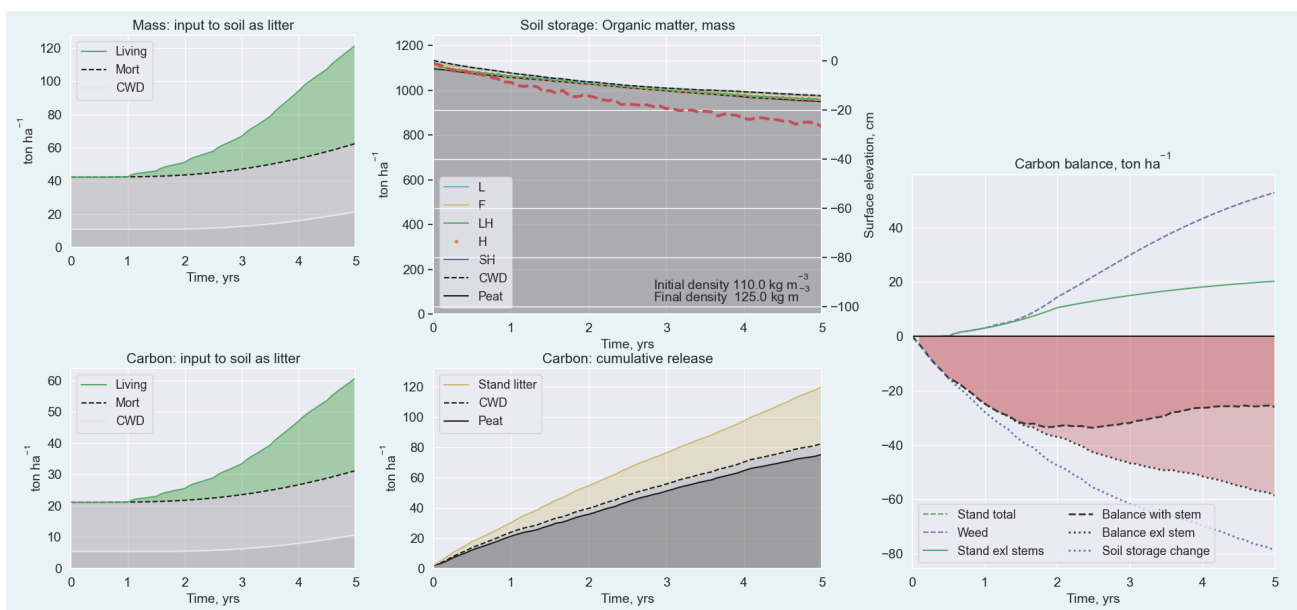
In the early development of the stand  $tr$  systems are small and only the resources close to the tree are available. Tree-wise balances balance was constructed by weighing the nutrient supply with tree coverage. The tree coverage was obtained as:

$$p_{tree\ coverage} = \min\left(\frac{M_{foliage}}{gm_{max}}, 1.0\right). \quad (A42)$$

Thus, the tree-wise nutrient supply was:

$$J_{tree\ supply} = p_{tree\ coverage} \left( J_{deposition} + J_{rel\ CWD} + J_{release\ litter} + J_{release\ peat} \right) + J_{microbial\ fix} + \sum_i J_{retrans\ i} + \frac{d}{dt} J_{release\ fert} \quad (A43)$$

Tree-wise nutrient demand ( $J_{tree\ demand}$ ,  $kg\ ha^{-1}\ time\ step^{-1}$ ) was constructed using Equation (A43) but omitting the weed components. The tree-wise nutrient balance was obtained by subtracting  $J_{tree\ supply}$  from  $J_{tree\ demand}$ , and thereafter integrated over the time to obtain the cumulative tree-wise nutrient balance.



**Figure A3.** Left upper panel: Cumulative litter input to soil from living biomass, from mortality and CWD, left lower panel: C input to soil from living biomass (green area), from mortality (light grey area) and CWD (dark grey area). Upper middle: Organic matter storage in soil including stand residue  $L$ ,  $F$ ,  $LH$ ,  $H$ ,  $SH$  component computed by Romul-submodel (colored areas), CWD (light grey area) and peat (dark grey area); and subsidence as affected by soil organic matter change refer to right y-axis, compaction and shrinking/swelling. Lower middle: cumulative C emissions from stand litter, CWD and peat. Lower right: C storage in stand and weed biomass, in stand total biomass and in stand biomass excluding stems described above the x-axis. Lowermost line below the x-axis describes the change in soil C storage, and the next dotted line up denotes C balance.

## References

- Nichols, J.E.; Peteet, D.M. Rapid expansion of northern peatlands and doubled estimate of carbon storage. *Nat. Geosci.* **2019**, *12*, 917–921. [\[CrossRef\]](#)
- Dargie, G.; Lewis, S.; Lawson, I.; Mitchard, E.; Page, S.; Bocko, Y.; Ifo, S. Age, extent and carbon storage of the central Congo Basin peatland complex. *Nature* **2017**, *542*, 86–90.



3. Reddy, K.; Delaune, R. *Biogeochemistry of Wetlands: Science and Applications*; CRC Press: Boca Raton, FL, USA, 2008; pp. 1–781. [[CrossRef](#)]
4. Minkkinen, K.; Laine, J. Long-term effect of forest drainage on the peat carbon stores of pine mires in Finland. *Can. J. For. Res.* **1998**, *28*, 1267–1275. [[CrossRef](#)]
5. Hooijer, A.; Page, S.; Jauhiainen, J.; Lee, W.A.; Lu, X.X.; Idris, A.; Anshari, G. Subsidence and carbon loss in drained tropical peatlands. *Biogeosciences* **2012**, *9*, 1053–1071. [[CrossRef](#)]
6. Ojanen, P.; Minkkinen, K.; Alm, J.; Penttilä, T. Soil–atmosphere CO<sub>2</sub>, CH<sub>4</sub> and N<sub>2</sub>O fluxes in boreal forestry-drained peatlands. *For. Ecol. Manag.* **2010**, *260*, 411–421. [[CrossRef](#)]
7. Jauhiainen, J.; Hooijer, A.; Page, S.E. Carbon dioxide emissions from an Acacia plantation on peatland in Sumatra, Indonesia. *Biogeosciences* **2012**, *9*, 617–630. [[CrossRef](#)]
8. Miettinen, J.; Shi, C.; Liew, S.C. Fire Distribution in Peninsular Malaysia, Sumatra and Borneo in 2015 with Special Emphasis on Peatland Fires. *Environ. Manag.* **2017**, *60*. [[CrossRef](#)] [[PubMed](#)]
9. Evans, C.D.; Williamson, J.M.; Kacaribu, F.; Irawan, D.; Suardiwerianto, Y.; Hidayat, M.F.; Laurén, A.; Page, S.E. Rates and spatial variability of peat subsidence in Acacia plantation and forest landscapes in Sumatra, Indonesia. *Geoderma* **2019**, *338*, 410–421. [[CrossRef](#)]
10. Nieminen, M.; Sallantausta, T.; Ukonmaanaho, L.; Nieminen, T.M.; Sarkkola, S. Nitrogen and phosphorus concentrations in discharge from drained peatland forests are increasing. *Sci. Total. Environ.* **2017**, *609*, 974–981. [[CrossRef](#)]
11. Konecny, K.; Ballhorn, U.; Navratil, P.; Jubanski, J.; Page, S.E.; Tansey, K.; Hooijer, A.; Vernimmen, R.; Siegert, F. Variable carbon losses from recurrent fires in drained tropical peatlands. *Glob. Chang. Biol.* **2016**, *22*, 1469–1480. [[CrossRef](#)]
12. Page, S.; Rieley, J.; Banks, C. Global and regional importance of the tropical peatland carbon pool. *Glob. Chang. Biol.* **2011**, *17*, 798–818. [[CrossRef](#)]
13. Miettinen, J.; Shi, C.; Liew, S.C. Land cover distribution in the peatlands of Peninsular Malaysia, Sumatra and Borneo in 2015 with changes since 1990. *Glob. Ecol. Conserv.* **2016**, *6*, 67–78. [[CrossRef](#)]
14. Wijedasa, L.; Jauhiainen, J.; Könönen, M.; Lampela, M.; Vasander, H.; Leblanc, M.C.; Evers, S.; Smith, T.; Yule, C.; Varkkey, H.; et al. Denial of long-term issues with agriculture on tropical peatlands will have devastating consequences. *Glob. Chang. Biol.* **2017**, *23*. [[CrossRef](#)] [[PubMed](#)]
15. Finér, L. Biomass and nutrient dynamics of Scots pine on a drained ombrotrophic bog. *Finn. For. Res. Inst. Res. Pap.* **1992**, *420*, 1–43.
16. Lauhanen, R.; Kaunisto, S. Effect of drainage maintenance on the nutrient status on drained Scots pine mires. *Suo* **1999**, *50*, 119–132.
17. Silvola, J. Effect of drainage and fertilization on carbon output and nutrient mineralization of peat. *Suo* **1988**, *1-2*, 27–37.
18. Wang, M.; Talbot, J.; Moore, T.R. Drainage and fertilization effects on nutrient availability in an ombrotrophic peatland. *Sci. Total. Environ.* **2018**, *621*, 1255–1263. [[CrossRef](#)]
19. Kaunisto, S.; Paavilainen, E. Nutrient stores in old drainage areas and growth of stands. *Communicationes Inst. For. Fenn.* **1988**, *145*, 1–39.
20. Laiho, R.; Laine, J. Nitrogen and phosphorus stores in Peatlands drained for forestry in Finland. *Scand. J. For. Res.* **1994**, *9*, 251–260. [[CrossRef](#)]
21. Sarkkola, S.; Ukonmaanaho, L.; Nieminen, T.; Laiho, R.; Laurén, A.; Finér, L.; Nieminen, M. Should harvest residues be left on site in peatland forests to decrease the risk of potassium depletion? *For. Ecol. Manag.* **2016**, *374*, 136–145. [[CrossRef](#)]
22. Marwanto, S.; Watanabe, T.; Iskandar, W.; Sabiham, S.; Funakawa, S. Effects of seasonal rainfall and water table movement on the soil solution composition of tropical peatland. *Soil Sci. Plant Nutr.* **2018**, *64*, 386–395. [[CrossRef](#)]
23. Arnold, R.; Cuevas, E. Genetic variation in early growth, stem straightness and survival in Acacia crassiparva, A. mangium and Eucalyptus urophylla in Bukidnon province, Philippines. *J. Trop. For. Sci.* **2003**, *15*, 332–351.
24. Mendham, D.S.; White, D.A. A review of nutrient, water and organic matter dynamics of tropical acacias on mineral soils for improved management in Southeast Asia. *Aust. For.* **2019**, *82*, 45–56. [[CrossRef](#)]
25. Fabrika, M.; Pretzsch, H. *Forest Ecosystem Analysis and Modelling*; Technical University in Zvolen, Faculty of Forestry, Department of Forest Management and Geodesy: Zvolen, Slovakia, 2013; pp. 1–620.
26. Forss, E.; Gadow, K.; Saborowski, J. Growth models for unthinned Acacia mangium plantations in South Kalimantan, Indonesia. *J. Trop. For. Res.* **1996**, *8*, 449–462.
27. Forss, E.; Maltamo, M.; Saramäki, J. Static stand and tree characteristics model for Acacia mangium plantations. *J. Trop. For. Sci.* **1998**, *10*, 318–336.
28. Chen, Y.; Liu, Z.; Rao, X.; Wang, X.; Liang, C.; Lin, Y.; Zhou, L.; Cai, X.a.; Fu, S. Carbon Storage and Allocation Pattern in Plant Biomass among Different Forest Plantation Stands in Guangdong, China. *Forests* **2015**, *6*, 794–808. [[CrossRef](#)]
29. Krisnawati, H.; Kallio, M.; Kanninen, M. *Acacia Mangium Willd.: Ecology, Silviculture and Productivity*; Center for International Forestry Research: Bogor, Indonesia, 2011. [[CrossRef](#)]
30. Alvarado, A. Plant Nutrition in Tropical Forestry. In *Tropical Forestry Handbook*; Pancel, L., Köhl, M., Eds.; Springer: Berlin/Heidelberg, Germany, 2016; pp. 1113–1202.

31. Laclau, J.P.; Ranger, J.; Gonçalves, J.; Maquere, V.; Krusche, A.; M'Bou, A.; Nouvellon, Y.; Saint-Andre, L.; Jean-Pierre, B.; Piccolo, M.; et al. Biogeochemical cycles of nutrients in tropical Eucalyptus plantations: Main features shown by intensive monitoring in Congo and Brazil. *For. Ecol. Manag.* **2010**, *259*, 1771–1785. [[CrossRef](#)]
32. Mendham, D.S.; Hardiyanto, E.B.; Wicaksono, A.; Nurudin, M. Nutrient management of contrasting Acacia mangium genotypes and weed management strategies in South Sumatra, Indonesia. *Aust. For.* **2017**, *80*, 127–134. [[CrossRef](#)]
33. Othman, H.; Mohammed, A.; Mohamad Darus, F.; Harun, M.; Zambri, M. Best management practices for oil palm cultivati on peat: Ground water-table maintenance in relation to peat subsidence and estimation of CO<sub>2</sub> emissions at Sessang, Sarawak. *J. Oil Palm Res.* **2011**, *23*, 1078–1086.
34. Couwenberg, J.; Hooijer, A. Towards robust subsidence-based soil carbon emission factors for peat soils in South-East Asia, with special reference to oil palm plantations. *Mires Peat* **2013**, *12*, 1–13.
35. Ardiansyah, M.; Rusdi, M.; Rosalina, U.; Boer, R. Biomass Estimation and Carbon Stock Calculation in the Industrial Forest Plantation of PT WKS Jambi Using Landsat Data. 2005. Available online: [https://www.researchgate.net/profile/Muhammad-Rusdi/publication/279851174\\_Biomass\\_estimation\\_and\\_carbon\\_stock\\_calculation\\_in\\_the\\_industrial\\_forest\\_plantation\\_of\\_PT\\_WKS\\_Jambi\\_using\\_Landsat\\_data/links/559bf03408ae7f3eb4cee337/Biomass-estimation-and-carbon-stock-calculation-in-the-industrial-forest-plantation-of-PT-WKS-Jambi-using-Landsat-data.pdf](https://www.researchgate.net/profile/Muhammad-Rusdi/publication/279851174_Biomass_estimation_and_carbon_stock_calculation_in_the_industrial_forest_plantation_of_PT_WKS_Jambi_using_Landsat_data/links/559bf03408ae7f3eb4cee337/Biomass-estimation-and-carbon-stock-calculation-in-the-industrial-forest-plantation-of-PT-WKS-Jambi-using-Landsat-data.pdf) (accessed on 1 March 2021).
36. Nambiar, S. *Management of Soil, Nutrients and Water in Tropical Plantation Forests*; ACIAR; CSIRO Australia; CIFOR Indonesia: Canberra, Australia; Bogor, Indonesia, 1997.
37. Van Bich, N.; Eyles, A.; Mendham, D.; Dong, T.L.; Ratkowsky, D.; Evans, K.J.; Hai, V.D.; Thanh, H.V.; Thinh, N.V.; Mohammed, C. Contribution of Harvest Residues to Nutrient Cycling in a Tropical Acacia mangium Willd. Plantation. *Forests* **2018**, *9*, 577. [[CrossRef](#)]
38. Weiskittel, A.; Hann, D.W.; Kershaw, J.A., Jr.; Vanclay, J. *Forest Growth and Yield Modeling*; John Wiley & Sons, Ltd.: Hoboken, NJ, USA, 2011; pp. 1–415.
39. Berg, B.; McLaugherty, C. *Plant Litter. Decomposition, Humus Formation, Carbon Sequestration*; Springer: Berlin/Heidelberg, Germany, 2003.
40. Hararuk, O.; Smith, M.J.; Luo, Y. Microbial models with data-driven parameters predict stronger soil carbon responses to climate change. *Glob. Chang. Biol.* **2015**, *21*, 2439–2453. [[CrossRef](#)] [[PubMed](#)]
41. Mackensen, J.; Bauhus, J.; Webber, E. Decomposition rates of coarse woody debris—A review with particular emphasis on Australian tree species. *Aust. J. Bot.* **2003**, *51*, 27–37. [[CrossRef](#)]
42. Chertov, O.; Komarov, A.; Nadporozhskaya, M.; Bykhovets, S.; Zudin, S. ROMUL—A model of forest soil organic matter dynamics as a substantial tool for forest ecosystem modeling. *Ecol. Model.* **2001**, *138*, 289–308. [[CrossRef](#)]
43. Basuki, S.; Munoz, C.P. Emission of CO<sub>2</sub> and CH<sub>4</sub> from plantation forest of Acacia crassicarpa on peatlands in Indonesia. In Proceedings of the 14th International Peat Congress, Stockholm, Sweden, 3–8 June 2012; pp. 1–7.
44. Warren, M.W.; Kauffman, J.B.; Murdiyarso, D.; Anshari, G.; Hergoualc'h, K.; Kurnianto, S.; Purbopuspito, J.; Gusmayanti, E.; Afifudin, M.; Rahajoe, J.; et al. A cost-efficient method to assess carbon stocks in tropical peat soil. *Biogeosciences* **2012**, *9*, 4477–4485. [[CrossRef](#)]
45. Bi, H.; Turner, J.; Lambert, M. Additive biomass equations for native eucalypt forest trees of temperate Australia. *Trees* **2004**, *18*, 467–479. [[CrossRef](#)]
46. Palviainen, M.; Finér, L. Decomposition and nutrient release from Norway spruce coarse roots and stumps—A 40-year chronosequence study. *For. Ecol. Manag.* **2015**, *358*, 1–11. [[CrossRef](#)]
47. Anonymous. Description and Manual of Romul. Available online: [http://xxx.lanl.gov/abs/http://ecomodelling.ru/images/dles/en\\_romul\\_description\\_manual.pdf](http://xxx.lanl.gov/abs/http://ecomodelling.ru/images/dles/en_romul_description_manual.pdf) (accessed on 11 November 2020).
48. Camporese, M.; Ferraris, S.; Putti, M.; Salandin, P.; Teatini, P. Hydrological modeling in swelling/shrinking peat soils. *Water Resour. Res.* **2006**, *42*. [[CrossRef](#)]