

This is an electronic reprint of the original article.

This reprint *may differ* from the original in pagination and typographic detail.

Author(s): Juha Kaitera & Jouni Karhu

Title: Temperature range for germination of *Thekopsora areolata* aeciospores from Finnish Norway spruce seed orchards

Year: 2021

Version: Published version

Copyright: The Author(s) 2021

Rights: CC BY-SA 4.0

Rights url: <http://creativecommons.org/licenses/by-sa/4.0/>

Please cite the original version:

Kaitera J., Karhu J. (2021). Temperature range for germination of *Thekopsora areolata* aeciospores from Finnish Norway spruce seed orchards. *Silva Fennica* vol. 55 no. 1 article id 10422.
<https://doi.org/10.14214/sf.10422>

All material supplied via *Jukuri* is protected by copyright and other intellectual property rights. Duplication or sale, in electronic or print form, of any part of the repository collections is prohibited. Making electronic or print copies of the material is permitted only for your own personal use or for educational purposes. For other purposes, this article may be used in accordance with the publisher's terms. There may be differences between this version and the publisher's version. You are advised to cite the publisher's version.



Juha Kaitera and Jouni Karhu

Temperature range for germination of *Thekopsora areolata* aeciospores from Finnish Norway spruce seed orchards

Kaitera J., Karhu J. (2021). Temperature range for germination of *Thekopsora areolata* aeciospores from Finnish Norway spruce seed orchards. *Silva Fennica* vol. 55 no. 1 article id 10422. 9 p. <https://doi.org/10.14214/sf.10422>

Highlights

- Cherry-spruce rust was able to germinate at very low temperature (6 °C) close to the temperature when thermal growth starts.
- Optimum spore germination occurred between 15–24 °C.
- High temperature of 30 °C drastically reduced germination.
- Temperature had the most significant effect on germination, while spore source had less significant effect and agar media a non-significant effect on germination in a Fixed Effects model.

Abstract

Cherry-spruce rust caused by *Thekopsora areolata* (Fr.) Magnus is a serious cone pathogen of Norway spruce [*Picea abies* (L.) Karst.]. The rust causes great economical losses in seed orchards specialized in the production of high quality seeds. Germination range of *T. areolata* aeciospores from rust populations (spore sources) in seven Finnish Norway spruce seed orchards was tested on water agar and malt agar at nine temperatures varying between 6–30 °C. The temperature range of spore germination was high varying between 6 °C and 27 °C, while germination was retarded at 30 °C. The peak in germination rate of all spore sources occurred between 15–24 °C. In a model with fixed effects of agar media, temperature and spore source, temperature had the most significant effect on germination. Spore source had a less significant effect, while agar media had a non-significant effect on germination. The rust was able to germinate at low temperatures corresponding to temperatures when the thermal growing season starts at 5 °C in the spring. As spores from cones from both the spruce canopy and the ground showed very similar germination ranges, it indicated the great capacity of all spores of the rust to germinate early in the spring. Hot temperatures with over 30 °C drastically reduced germination of the rust.

Keywords *Picea abies*; cherry-spruce rust; cones; epidemics; rust diseases

Address Natural Resources Institute Finland (Luke), Natural resources and bioproduction, Paavo Havaksentie 3, FI-90014 University of Oulu, Finland

E-mail juha.kaitera@luke.fi

Received 31 July 2020 **Revised** 14 December 2020 **Accepted** 14 December 2020

1 Introduction

Cherry-spruce rust, *Thekopsora areolata* (Fr.) Magnus, is a serious pathogen of cones of *Picea* spp. in Europe and Asia (Gäumann 1959; Kaitera et al. 2014, 2017). It causes serious seed losses with economical importance especially in seed orchards specialized in the production of high quality seeds. Due to irregular flowering and irregular mast year cone crops, there is a lack of Norway spruce [*Picea abies* (L.) Karst.] seeds for production of seedlings for silviculture (Himanen 2016). Good cone crops with severe *T. areolata* damage have been reported in Finland in 1989 (Nikula and Jalkanen 1990), 2000 (Savonen 2000) and 2006 (Kaitera 2013). *Thekopsora areolata* causes premature opening of cone scales, reduces the number of seeds in cones and may cause 10-fold reduction in seed germination (Kaitera and Tillman-Sutela 2014). The rust has a complicated life-cycle: it spreads from old infected cones to young leaves of alternate host plants in the spring and early summer (Kaitera et al. 2009). The main alternate hosts of *T. areolata* are *Prunus* spp. (Gäumann 1959; Kaitera et al. 2014, 2019). Recently, *T. areolata* was shown to be heteroecious without an ability to spread from *Picea* to *Picea* (Kaitera et al. 2019). The aeciospores of the rust are viable from aecia of old infected cones for years (Kaitera and Tillman-Sutela 2014), which is beneficial for the rust to survive over unfavourable seasons and to infect *Prunus* for a long time. Temperature requirements for the germination of aeciospores from old infected cones are, however, unknown. The rust produces uredinia on *Prunus*, where urediniospores spread from tree to tree. Telia are produced on *Prunus* where basidia develop after overwintering of the leaves in the spring. Basidiospores from germinating basidia then infect pistillate cones of *Picea* (Gäumann 1959). The rust also infects shoots of *Picea*, where the rust sporulates and forms cankers (Roll-Hansen 1947). The rust may also occur at latent stage in shoots (Hietala et al. 2008). Genetic variation between rust populations in Scandinavia is low (Capador et al. 2020).

Rusts of trees have wide germination ranges that vary both between species and among different spore stages. As there are no studies available of the temperature range of *T. areolata* spores, the temperature range of various spore stages of the closest comparable rust fungi are described. Among species of the most important rust genus causing severe damage on conifers in northern Europe, *Cronartium* spp., the optimum germination temperature for aeciospores of *C. pini* (Willd.) Jørst. [syn. *C. flaccidum* (Alb. & Schwein.) Wint.] on water agar is 15 °C with the range of 5–30 °C. The corresponding optimum for urediniospores is 20 °C with the range of 5–25 °C and for basidiospores is 20 °C with the range of 10–25 °C (Ragazzi et al. 1986). The optimum temperature for germination of both aeciospores and urediniospores on plant leaves is 15–20 °C, but germination occurs also at lower (10 °C) and higher temperatures (25 °C) when the disease establishment is slower (Ragazzi et al. 1989). Disease establishment on plant leaves is also affected by light, moisture and age of the plant (Ragazzi 1983, 1992). The optimum germination temperature for *Cronartium ribicola* J. C. Fisch. aeciospores on agar is 16 °C with the range of 8–24 °C, while the optimum germination for urediniospores is 20 °C with the range of 16–28 °C (Van Arsdell et al. 1956). *Cronartium fusiforme* Hedgcock & Hunt ex Cummins aeciospores germinate best on distilled water at 21 °C with the temperature range of 11–29 °C, while the optimum temperature for urediniospores is 18 °C with the range of 8–29 °C (Siggers 1947). On oak leaves, uredinia of *Cronartium quercuum* f. sp. *fusiforme* (Hedgc. & N. Hunt) Burdsall & G. Snow develop most frequently at temperature range of 9–18 °C (Kuhlman 1987).

In a MESIKE project, factors affecting *T. areolata* epidemics and different practices of reducing rust damages were studied in Finnish Norway spruce seed orchards in 2018–2019. The aim of this study was to clarify the temperature requirements and optimal temperature for the germination of *T. areolata* aeciospores. The hypothesis was that optimum germination for aeciospores of *T. areolata* is about 20 °C, similar to the temperature requirements of *Cronartium* rusts.

This information was needed for pathogenicity tests of the rust and also to understand temperature requirements for spread of the rust.

2 Materials and methods

2.1 Spore material and inoculation conditions

Aeciospores of *T. areolata* were collected from seven cones bearing unopened aecia. Each cone was from a different Finnish Norway spruce seed orchard in southern Finland. Each cone was selected randomly among ca. 10 cones per seed orchard based on their moderate to high spore viability. These cones were collected from tree canopy in five seed orchards (sv = 1, 2, 5–7), from fallen tops in one seed orchard (sv=4) and from the ground in one seed orchard (sv=3). The 10 cones from each seed orchard represented cones with aecia that included viable spores i.e. spores that were potentially capable of infecting *Prunus* and thus suitable to study pathogenicity of the rust. Those cones with aecia that were contaminated by secondary fungi (e.g. *Penicillium*), with old aecia that had already sporulated most of their spores and the number of spores was very low, were excluded from the used material. To avoid using spores that did not germinate at all in pathogenicity tests, we screened briefly germination of a low number of spores from the cones at room temperature. Therefore, we could say at a very general level that our spore material had moderate to high germination. All seven cones represented different rust populations, but we did not identify spores from the cones genetically in this study. However, in another study, a total of 35 cones from the same rust populations as in this study were used in *Prunus* inoculations, where the rust populations were identified genetically as *T. areolata* (Kaitera et al. 2019).

Spores from the selected cones were then dusted on water agar (1.5%) and malt agar (2%) in Petri dishes (one spore source per dish) with a paintbrush. One inoculated plate of each spore source was then incubated in either a growth chamber (Binder) or a climate chamber (Climacell) in the dark at nine temperatures. The incubation temperatures were: 6 °C, 9 °C, 12 °C, 15 °C, 18 °C, 21 °C, 24 °C, 27 °C and 30 °C. The lowest temperature corresponded to the temperature associated with the beginning of the thermal growing season in the spring. The highest value represented a hot summer temperature that might be lethal for the rust. The plates were incubated for 2 h, 6 h and 24 h after which the germination rate of the spores i.e. number of spores with or without a germ tube was counted from 10 randomly chosen microscopic fields on the plates using a light microscope. The microscopic fields on the plates were checked by moving each plate with spores under a light microscope and focusing on the agar surface in the middle of the objective following counting of spores with a germ tube. Then the plate was moved horizontally a random length, the microscope focused on another field on the agar surface and the germination counted from another field.

2.2 Statistical analyses

The germination rate of the aeciospores was modelled with agar media, temperature and spore source after incubations after both 6 h and 24 h as effect variables using the glimmix procedure of SAS software (SAS Institute Inc., version 9.4). Depended variable germination was modelled as continuous proportion from zero to one (or 0% to 100%) with beta distribution. Two independent variables spore source and agar were used as factors and the third independent variable temperature as continuous one. Response temperature was not linear and therefore, the appropriate function form was quadratic. The Fixed Effects test was used to compare the effect of different variables

and their interactions on the germination rate of the spores. The best selected model that gave good generalization and interpretation of parameters based on AIC, residuals and residuals' normality is:

$$\text{Germination} = \text{spore source} + \text{agar} + \text{spore source} \times \text{agar} + \text{temperature} + \text{temperature}^2$$

3 Results

Germination rate of the spores varied greatly at various temperatures (Fig. 1). Germination occurred between 6–27 °C, while the highest germination was measured at the temperatures between 15–24 °C after 24h incubation. The peak of the germination was measured at 18 °C. The germination rate curve was very similar regardless of the spore source. However, germination peaks (% of germination) of two spore sources (Paronen and Suhola) were higher at 18 °C compared to the

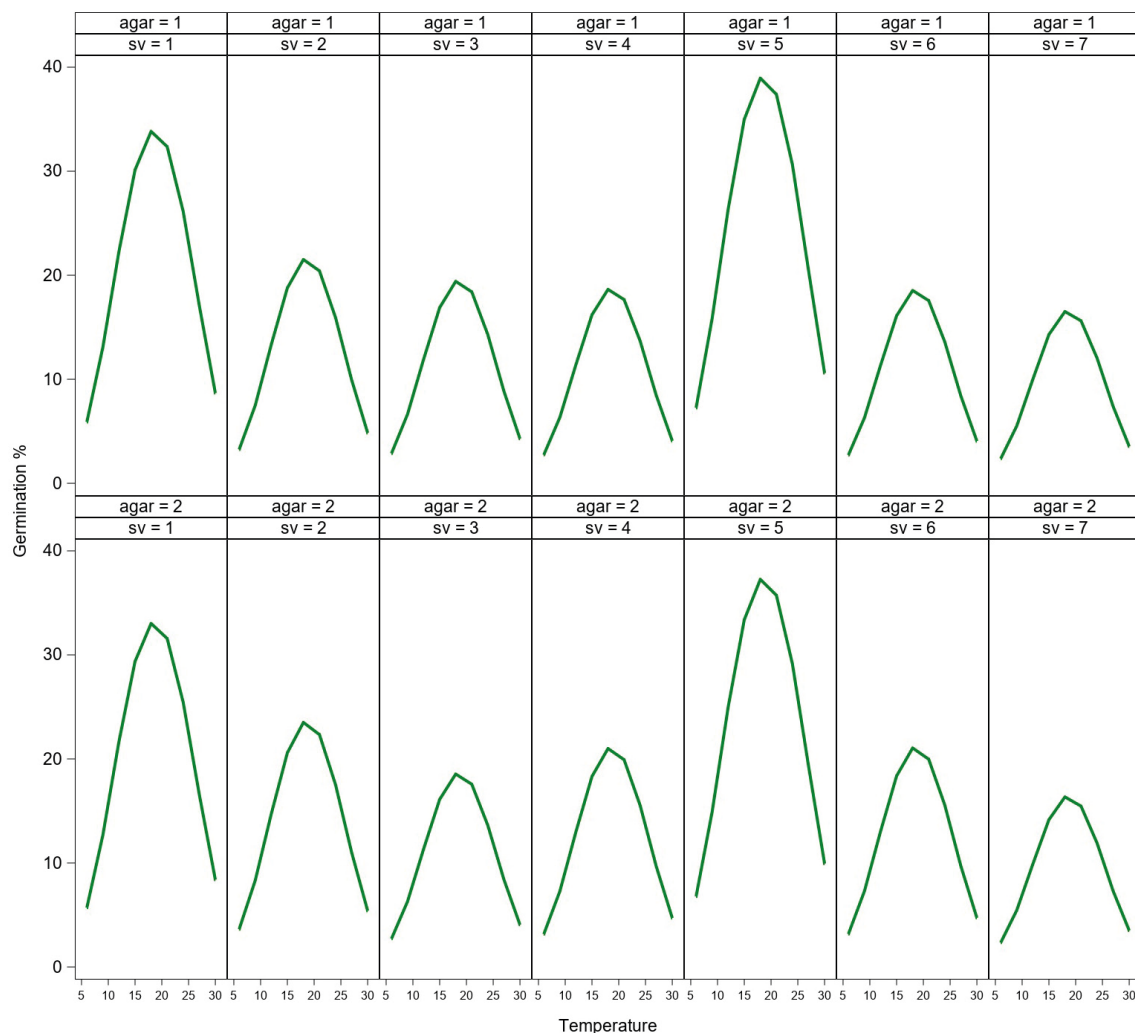


Fig. 1. Model of germination (%) of aeciospores from seven seed orchards (sv = 1–7) at temperatures between 6–30 °C after 24 h of incubation on water agar (agar = 1) and malt agar (agar = 2). Spore sources (sv = 1–7): Paronen (1), Metsä-Ihala (2), Imatra (3), Sillanpää (4), Suhola (5), Taavetti (6) and Riihimäki (7) seed orchards.

Table 1. Germination model (Type 3 of fixed effects) of aeciospores after 6 h incubation with fixed variables of temperature (temp), agar, spore source and interaction between agar and spore source.

Effect	Type III Tests of Fixed Effects			
	Num DF	Den DF	F value	Pr > F
spore source	6	1244	24.02	<0.0001
agar	1	1244	0.07	0.4478
spore source × agar	6	1244	1.51	0.6508
temp	1	1244	202.59	<0.0001
temp ²	1	1244	204.23	<0.0001

other spore sources. No significant differences were observed between the different types of agar media (Tables 1 and 2). Germination was low (1–17%) at the low temperatures (6–9 °C), and it was reduced close to zero at the highest temperature of 30 °C.

Germination was low after 2h of incubation, but germination of all the spore sources started during the first 2 hours. Germination of all spore sources increased during the 6 h-incubation, and the germination was most rapid at temperatures between 15–21 °C (Fig. 2). Differences in germination occurred between spore sources at 9–24 °C, while germination was equally low at 6 °C and 30 °C after 6 h-incubation. Germination rate continued to increase after 6 hours and reached the maximum level over the investigated time after 24 h-incubation. For a few spore sources, a high germination rate was reached after only 6 h of incubation (Fig. 3).

In the Fixed Effects model of germination with media, temperature, spore source and their interactions as classifying variables, temperature was the most significant one affecting rust germination after both 6 h and 24 h incubations (Tables 1 and 2). Also spore source had a slightly significant effect in the best model generalizing the effects of the variables (Tables 1 and 2, see also Fig. 1). Agar media alone had a non-significant effect on germination.

Table 2. Germination model (Type 3 of fixed effects) of aeciospores after 24 h incubation with fixed variables of temperature (temp), agar, spore source and interaction between agar and spore source.

Effect	Type III Tests of Fixed Effects			
	Num DF	Den DF	F value	Pr > F
spore source	6	1244	51.98	<0.0001
agar	1	1244	0.58	0.4478
spore source × agar	6	1244	0.70	0.6508
temp	1	1244	691.08	<0.0001
temp ²	1	1244	697.38	<0.0001

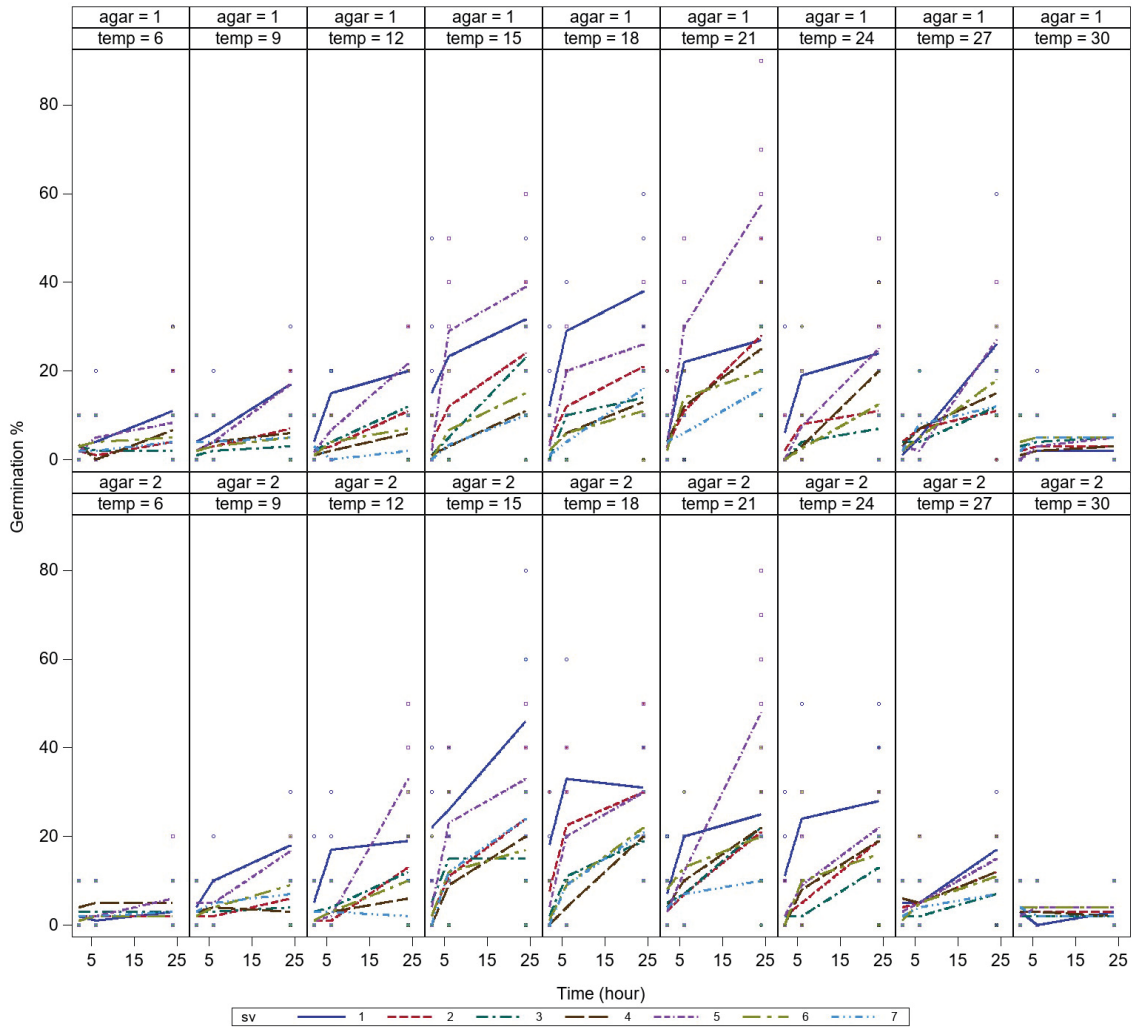


Fig. 2. Variation in germination of aeciospores (%) of seven spore sources at temperatures between 6–30 °C after incubation times of 2 h, 6 h and 24 h on water agar (agar = 1) and malt agar (agar = 2). For the spore sources (sv 1–7), see Fig. 1.

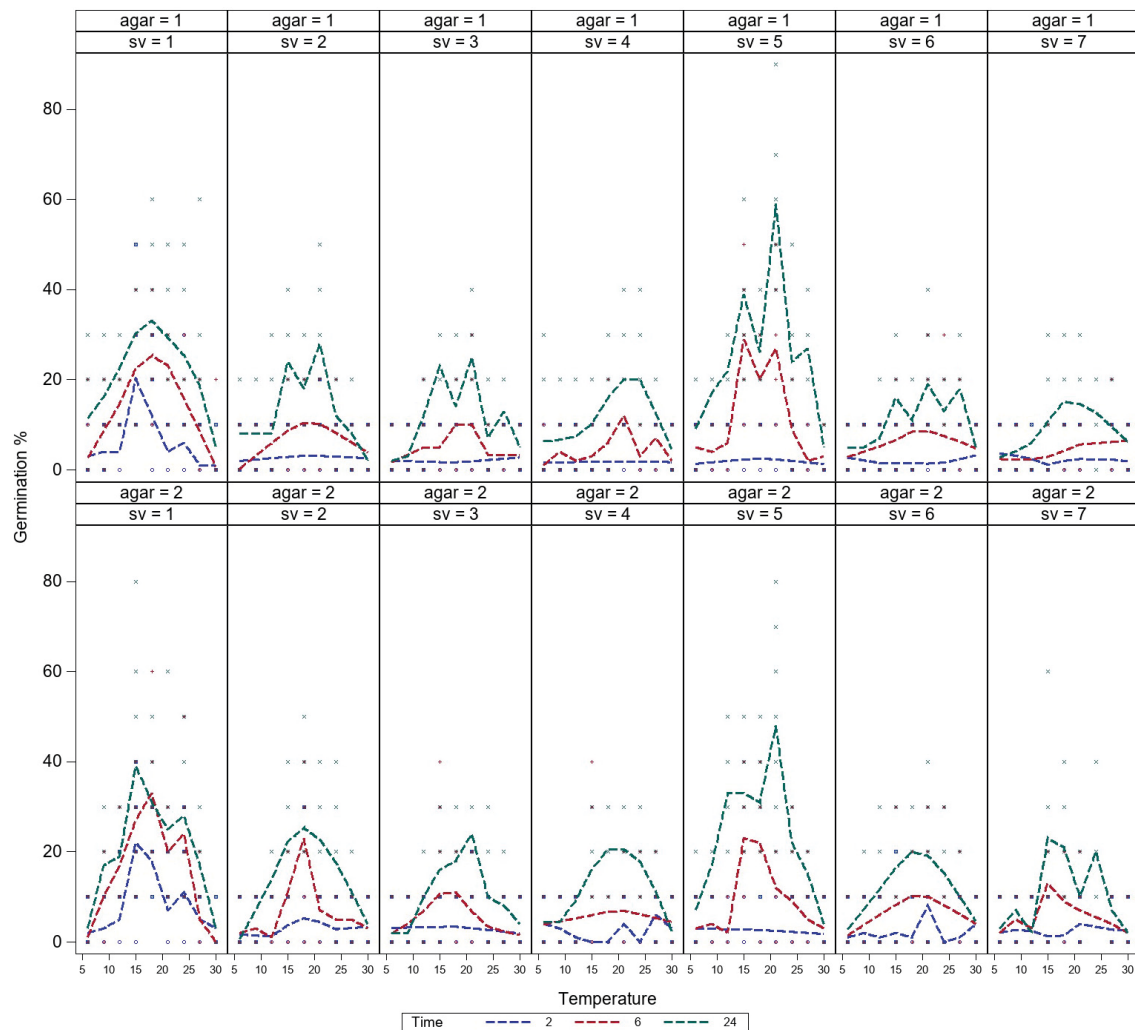


Fig. 3. Variation in germination of aeciospores (%) of seven spore sources at temperatures between 6–30 °C on water agar (agar = 1) and malt agar (agar = 2). The germination curves are presented separately after 2 h (1), 6 h (2) and 24 h (3) incubation. For the spore sources (sv 1–7), see Fig. 1.

4 Discussion

This study showed that *T. areolata* aeciospores germinate at a large range of temperatures. The rust is able to germinate at very low temperatures close to the temperature when the thermal growing season begins (5 °C). This is clearly an advantage for the rust as it is able to infect and germinate on alternate hosts in the early spring as their leaves develop. Formation of uredinia within 10–14 days on aeciospore infected young *Prunus* leaves was recently shown by artificial inoculations (Kaitera et al. 2019). The first uredinia develop on *Prunus* in late May on natural plants in seed orchards in Finland (Kaitera, unpublished). This indicates that leaf infection by aeciospores occurs in the spring at low temperatures close to the lowest temperature limit of germination of the aeciospores reported in this study. High temperatures (30 °C) clearly reduce aeciospore germination as shown in this study, and therefore, hot summers may hinder rust spreading and epidemics.

The optimal germination of *T. areolata* aeciospores and the range of germination were about the same as for *Cronartium flaccidum* (Ragazzi et al. 1986, 1989). The optimal temperatures were higher and temperature range narrower for *C. ribicola* (Van Arsdell et al. 1956), and *C. fusiforme*

and *C. quercuum f. sp. fusiforme* (Siggers 1947; Kuhlman 1989) than for *T. areolata*. Therefore, the temperature ranges for these two pathogenic rust genera, *Thekopsora* and *Cronartium*, did not drastically differ from one another.

This study indicated that besides temperature also spore source affects spore germination. This is probably due to infected cone material of various age, stage of aecial maturation, other fungal unknown characteristics like virulence of the rust or the host response to rust sporulation on different clones that vary in seed orchards. Cones that remain intact in tree canopy contain aecia that mature at various time. Some of these cones may contain viable spores for years after initial formation as was shown by Kaitera and Tillman-Sutela (2014). Also infected cones that fall down may contain viable spores, but their germination rate is lower than in most cones that remain in the trees (Kaitera et al. 2019). The temperature curve of germination, however, is similar regardless of the spore source as shown in this study. Also spores from infected cones from both tree canopy and from the ground are pathogenic on *Prunus* (Kaitera et al. 2019).

In conclusion, *T. areolata* is able to germinate under very low temperatures, and thus, infection of alternate hosts can be efficient already in early summer from aecia of old infected cones. Therefore, control of cherry-spruce rust can be improved by removing old infected cones from the spruce canopy especially in seed orchards.

Acknowledgements

We thank Mr. Timo Mikkonen for preparing the agar media for the germination tests. We also thank Finnish Ministry of Agriculture and Forestry for financing the MESIKE project, where this study was included. Siemen Forelia Oy and Tapio Palvelut Oy are also acknowledged for the cone and spore material used in this study.

References

- Capador H, Samils B, Kaitera J, Olson Å (2020) Genetic evidence for sexual reproduction and multiple infections of Norway spruce cones by the rust fungus *Thekopsora areolata*. *Ecol Evol* 10: 7389–7403. <https://doi.org/10.1002/ece3.6466>.
- Gäumann E (1959) Die Rostpilze Mitteleuropas. [Rust fungi of Central Europe]. *Beiträge zur Kryptogamenflora der Schweiz* 12: 53–57.
- Hietala AM, Solheim H, Fossdal CG (2007) Real-time PCR-based monitoring of DNA pools in the tri-trophic interaction between Norway spruce, the rust *Thekopsora areolata*, and an opportunistic ascomycetous *Phomopsis* sp. *Phytopathology* 98: 51–58. <https://doi.org/10.1094/PHYTO-98-1-0051>.
- Himanen K (2016) Maaottelu kuusen siemenviljelyksillä. *Metsätieteen aikakauskirja* 3–4: 175–180. [Battle between Finland and Sweden in seed orchards]. <https://doi.org/10.14214/ma.5709>.
- Kaitera J (2013) *Thekopsora* and *Chrysomyxa* cone rusts damage Norway spruce cones after a good cone crop in Finland. *Scand J For Res* 28: 217–222. <https://doi.org/10.1080/02827581.2012.727024>.
- Kaitera J, Tillman-Sutela E (2014) Germination capacity of *Thekopsora areolata* aeciospores and the effect of cone rusts on seeds of *Picea abies*. *Scand J For Res* 29: 22–26. <https://doi.org/10.1080/02827581.2013.844851>.
- Kaitera J, Tillman-Sutela E, Kauppi A (2009) Seasonal fruiting and sporulation of *Thekopsora* and *Chrysomyxa* cone rusts in Norway spruce cones and alternate hosts in Finland. *Can J For Res*

- 39: 1630–1646. <https://doi.org/10.1139/X09-070>.
- Kaitera J, Hiltunen R, Kauppila T, Pitkäranta M, Hantula J (2014) Fruiting and sporulation of *Thekopsora* and *Chrysomyxa* cone rusts in *Picea* cones and *Prunus* leaves. For Pathol 44: 387–395. <https://doi.org/10.1111/efp.12114>.
- Kaitera J, Kauppila T, Hantula J (2017) New *Picea* hosts for *Chrysomyxa ledi* and *Thekopsora areolata*. For Pathol 47, article id e12365. <https://doi.org/10.1111/efp.12365>.
- Kaitera J, Kauppila T, Hantula J (2019) Pathogenicity of *Thekopsora areolata* from seed orchards in Finland on *Prunus* spp. and *Picea abies*. For Pathol 49, article id e12567. <https://doi.org/10.1111/efp.12567>.
- Kuhlman EG (1987) Temperature, inoculum type, and leaf maturity affect urediospore production by *Cronartium Quercuum* F. sp. *fusiforme*. Mycologia 79: 405–409. <https://doi.org/10.1080/00275514.1987.12025397>.
- Nikula A, Jalkanen R (1999) Kuusen käpytuholaisen ja -tautien esiintyminen Pohjois-Suomessa kesällä 1989. [Occurrence of spruce cone insects and pathogens in northern Finland in summer 1989]. In: Varmola M, Katermaa T (eds) Metsänparannus: metsäntutkimuspäivät Rovaniemellä 1990. Metsäntutkimuslaitoksen tiedonantoja 362: 83–89. <http://urn.fi/URN:ISBN:951-40-1116-3>.
- Ragazzi A (1983) Development of *Cronartium flaccidum* (Alb. & Schw.) Wint. on *Vincetoxicum officinale* Moench in connection with some environmental factors. J Phytopathol 108: 160–171. <https://doi.org/10.1111/j.1439-0434.1983.tb00575.x>.
- Ragazzi A (1992) Production of telia by *Cronartium flaccidum* from infections with aeciospores and with urediospores. Phytopathol Mediterr 31: 123–125.
- Ragazzi A, Dellavalle Fedi I, Mesturino L (1986) *Cronartium flaccidum* (Alb. & Schw.) Wint. spores: temperature requirements for germination. Phytopathol Mediterr 25: 57–60.
- Ragazzi A, Dellavalle Fedi I, Mesturino I (1989) The effects of some variables on the production of uredinia and telia of *Cronartium flaccidum*. Phytopathol Mediterr 28: 43–45.
- Roll-Hansen F (1947) Nytt om lokkrusten (*Pucciniastrum padi*). [New information about cherry-spruce rust (*Pucciniastrum padi*)]. Medd Nor Skogforsksves 9: 503–510.
- Savonen E-M (2001) Kuusella hyvä käpyvuosi, mutta runsaasti tuhoja. [Norway spruce has a good cone crop, but a high number of cone damages]. In: Poteri M (ed) Taimiuutiset 1/2001: 10–13. <http://urn.fi/URN:NBN:fi-metla-201211066680>.
- Siggers PV (1947) Temperature requirements for germination of spores of *Cronartium fusiforme*. Phytopathology 37: 855–860.
- Van Arsdel EP, Riker AJ, Patton RF (1956) The effects of temperature and moisture on the spread of white-pine blister rust. Phytopathology 46: 307–318.

Total of 20 references.