

This is an electronic reprint of the original article.

This reprint *may differ* from the original in pagination and typographic detail.

Author(s): Paljakka Teemu, Rissanen Kaisa, Vanhatalo Anni, Salmon Yann, Jyske Tuula, Prisle Nønne L., Linnakoski Riikka, Lin Jack J., Laakso Tapio, Kasanen Risto, Bäck Jaana & Hölttä Teemu

Title: Is Decreased Xylem Sap Surface Tension Associated With Embolism and Loss of Xylem Hydraulic Conductivity in Pathogen-Infected Norway Spruce Saplings?

Year: 2020

Version: Published version

Copyright: The Author(s) 2020

Rights: CC BY 4.0

Rights url: <http://creativecommons.org/licenses/by/4.0/>

Please cite the original version:

Paljakka T, Rissanen K, Vanhatalo A, Salmon Y, Jyske T, Prisle NL, Linnakoski R, Lin JJ, Laakso T, Kasanen R, Bäck J and Hölttä T (2020) Is Decreased Xylem Sap Surface Tension Associated With Embolism and Loss of Xylem Hydraulic Conductivity in Pathogen-Infected Norway Spruce Saplings? *Front. Plant Sci.* 11:1090. doi: 10.3389/fpls.2020.01090

All material supplied via *Jukuri* is protected by copyright and other intellectual property rights. Duplication or sale, in electronic or print form, of any part of the repository collections is prohibited. Making electronic or print copies of the material is permitted only for your own personal use or for educational purposes. For other purposes, this article may be used in accordance with the publisher's terms. There may be differences between this version and the publisher's version. You are advised to cite the publisher's version.



Is Decreased Xylem Sap Surface Tension Associated With Embolism and Loss of Xylem Hydraulic Conductivity in Pathogen-Infected Norway Spruce Saplings?

OPEN ACCESS

Edited by:

Sean Michael Gleason,
United States Department of
Agriculture, United States

Reviewed by:

Paal Krokene,
Norwegian Institute of Bioeconomy
Research (NIBIO), Norway
Ari Mikko Hietala,
Norwegian Institute of Bioeconomy
Research (NIBIO), Norway

*Correspondence:

Teemu Paljakka
teemu.paljakka@helsinki.fi

†Present address:

Kaisa Rissanen,
Center for forest research,
Département des sciences
biologiques, Université du Québec à
Montréal, Montréal, Canada

Specialty section:

This article was submitted to
Plant Physiology,
a section of the journal
Frontiers in Plant Science

Received: 02 October 2019

Accepted: 02 July 2020

Published: 16 July 2020

Citation:

Paljakka T, Rissanen K, Vanhatalo A,
Salmon Y, Jyske T, Prisle NL,
Linnakoski R, Lin JJ, Laakso T,
Kasanen R, Bäck J and Hölttä T (2020)
Is Decreased Xylem Sap Surface
Tension Associated With Embolism
and Loss of Xylem Hydraulic
Conductivity in Pathogen-Infected
Norway Spruce Saplings?
Front. Plant Sci. 11:1090.
doi: 10.3389/fpls.2020.01090

Teemu Paljakka^{1*}, Kaisa Rissanen^{1†}, Anni Vanhatalo¹, Yann Salmon^{1,2}, Tuula Jyske³,
Nønne L. Prisle⁴, Riikka Linnakoski⁵, Jack J. Lin⁴, Tapio Laakso³, Risto Kasanen⁶,
Jaana Bäck^{1,6} and Teemu Hölttä^{1,6}

¹ Faculty of Agriculture and Forestry, Institute for Atmospheric and Earth System Research/Forest Sciences, University of Helsinki, Helsinki, Finland, ² Faculty of Science, Institute for Atmospheric and Earth System Research/Physics, University of Helsinki, Helsinki, Finland, ³ Natural Resources Institute Finland (Luke), Espoo, Finland, ⁴ Nano and Molecular Systems Research Unit, University of Oulu, Oulu, Finland, ⁵ Natural Resources Institute Finland (Luke), Helsinki, Finland, ⁶ Forest Sciences/Faculty of Agriculture and Forestry, University of Helsinki, Helsinki, Finland

Increased abiotic stress along with increasing temperatures, dry periods and forest disturbances may favor biotic stressors such as simultaneous invasion of bark beetle and ophiostomatoid fungi. It is not fully understood how tree desiccation is associated with colonization of sapwood by fungi. A decrease in xylem sap surface tension (σ_{xylem}) as a result of infection has been hypothesized to cause xylem embolism by lowering the threshold for air-seeding at the pits between conduits and disruptions in tree water transport. However, this hypothesis has not yet been tested. We investigated tree water relations by measuring the stem xylem hydraulic conductivity (K_{stem}), σ_{xylem} , stem relative water content (RWC_{stem}), and water potential (Ψ_{stem}), and canopy conductance (g_{canopy}), as well as the compound composition in xylem sap in Norway spruce (*Picea abies*) saplings. We conducted our measurements at the later stage of *Endoconidiophora polonica* infection when visible symptoms had occurred in xylem. Saplings of two clones (44 trees altogether) were allocated to treatments of inoculated, wounded control and intact control trees in a greenhouse. The saplings were destructively sampled every second week during summer 2016. σ_{xylem} , K_{stem} and RWC_{stem} decreased following the inoculation, which may indicate that decreased σ_{xylem} resulted in increased embolism. g_{canopy} did not differ between treatments indicating that stomata responded to Ψ_{stem} rather than to embolism formation. Concentrations of quinic acid, myo-inositol, sucrose and alkylphenol increased in the xylem sap of inoculated trees. Myo-inositol concentrations also correlated negatively with σ_{xylem} and K_{stem} . Our study is a preliminary investigation of the role of σ_{xylem} in *E. polonica* infected trees based on previous hypotheses. The results suggest that *E. polonica* infection can lead to a

simultaneous decrease in xylem sap surface tension and a decline in tree hydraulic conductivity, thus hampering tree water transport.

Keywords: embolism, *Endoconidiophora polonica*, hydraulic conductivity, *Picea abies* (Norway spruce), plant-pathogen interactions, surface tension, xylem transport, xylem sap composition

INTRODUCTION

Trees respond to abiotic stress factors (e.g. heat, water deficit) by controlling water use and photosynthetic production with their leaf stomata, in addition to modifying growth rate and use of stored carbohydrates. Pre-existing water stress may also predispose trees to pests and pathogens (Netherer et al., 2015; Hossain et al., 2018; Matthews et al., 2018). Bark beetles are major pests of conifers in Europe (Kautz et al., 2017), and they simultaneously vector several species of ophiostomatoid fungi (Perry, 1991; Linnakoski et al., 2012; Linnakoski et al., 2016). Some of these ophiostomatoid species are likely interfering with tree water transport in the xylem. However, the mechanism by which these pathogen infections disturb tree water transport and their role in weakening tree vigor during an invasion remain unclear (Kuroda, 2005; Linnakoski et al., 2012; Giordano et al., 2013).

Xylem conduits can become air-filled, i.e. embolized, typically by air-seeding (Tyree and Sperry, 1989). Embolism reduces the ability to transport water in xylem, i.e. lowers the tree hydraulic conductance. In extreme cases, embolism may even lead to a feedforward cycle of loss in hydraulic conductance, resulting in hydraulic failure and subsequent tree mortality (McDowell et al., 2008; Brodribb and Cochard, 2009). Air-seeding occurs when the pressure difference over a water-air interface in the bordered pit membrane becomes larger than the xylem sap surface tension (σ_{xylem}) force required to restrict the air bubble (Sperry and Tyree, 1988; Delzon et al., 2010; Jansen et al., 2012). Thus, with

lower σ_{xylem} a conduit is embolized already at higher Ψ_{stem} . The threshold for air-seeding is given by the Young-Laplace equation (Tyree and Zimmermann, 2002)

$$\Delta P = 2\sigma \cos \alpha / r, \tag{1}$$

where ΔP is the difference in pressure between a water-filled and an air-filled conduit, σ is surface tension, α is the contact angle, and r is the radius of the pores that separate the air-water meniscus in the pit membranes between adjacent conduits (Sperry and Tyree, 1988). The theoretical framework thus suggests the first chain in the events should be the decrease in σ_{xylem} , followed by embolism formation and a decrease in hydraulic conductivity.

σ_{xylem} has typically been thought to equal the surface tension of pure water. However, the variability of σ_{xylem} in natural conditions has recently received attention (Christensen-Dalsgaard et al., 2011; Domec, 2011; Schenk et al., 2015; Losso et al., 2017; Schenk et al., 2017). A decrease in σ_{xylem} , e.g. due to surfactants, has been shown to increase xylem vulnerability to embolism in both angiosperms (Crombie et al., 1985; Sperry and Tyree, 1988; Choat et al., 2004) and gymnosperms (Cochard et al., 2009; Hölttä et al., 2012). These experiments have documented that a decrease in σ_{xylem} is proportional to Ψ_{stem} causing a given amount of embolism in accordance with Eq. (1) (Figure 1A). In addition, a decrease in σ_{xylem} is expected to lead to a lowered stem water content, as embolism formation empties the water conduits and decreases the capillary forces retaining water in extracellular spaces (Tyree and Yang, 1990) (Figure 1B).

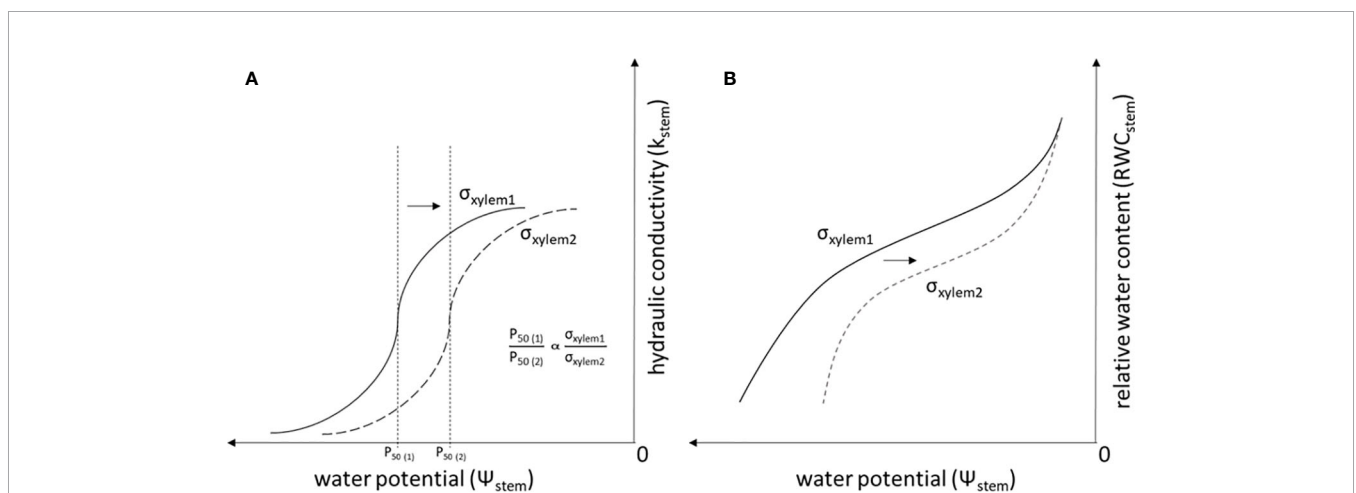


FIGURE 1 | Theoretical relationship of σ_{xylem} , K_{stem} and Ψ_{stem} (A), and the theoretical relationship of σ_{xylem} , RWC_{stem} and Ψ_{stem} (B) when σ_{xylem} is changed. Symbols refer to surface tensions of pure water (σ_{xylem1}) and xylem sap with lowered surface tension (σ_{xylem2}), $P_{50(1)}$ is the P_{50} value (i.e. the Ψ_{stem} where 50% of the conductivity in water transport is lost because of embolism) when the xylem sap surface tension corresponds to σ_{xylem1} , and $P_{50(2)}$ is the P_{50} value when the xylem sap surface tension corresponds to σ_{xylem2} . The relationship between P_{50} and σ_{xylem} is linear and is demonstrated also for conifers in Cochard et al. (2009).

The surfactants responsible for changes in σ_{xylem} are not well known, although lipid surfactants have recently been found to be naturally present in xylem sap (Schenk et al., 2015; Schenk et al., 2017).

European spruce bark beetle (*Ips typographus*) acts as a vector of ophiostomatoid fungi, of which *Endoconidiophora polonica* is the most virulent pathogen, capable of causing extensive necrotic lesions in infected tissues followed by wilting symptoms of the canopy and eventually tree death (Horntvedt et al., 1983; Krokene and Solheim, 1998; Repe et al., 2015; Linnakoski et al., 2017a; Linnakoski et al., 2017b). Bark beetles bore through bark, enabling the insect-vectoring fungi to spread to the cambial zone, where the hyphae rapidly grow in the phloem and through the cell walls to adjacent living cells (Franceschi et al., 1998). The fungal hyphae grow radially in the ray parenchyma cells towards the xylem, where the hyphae spread among the tracheids via the bordered pits (Franceschi et al., 1998). Virulence of *E. polonica* is related to its capability to invade deeper into the xylem than other pathogenic ophiostomatoid fungi (Horntvedt et al., 1983; Krokene and Solheim, 1998). The role of reduced σ_{xylem} in xylem water transport during pathogenic infection, such as *E. polonica*, has previously been hypothesized but remains to be investigated (Tyree and Sperry, 1989; Christiansen and Fjone, 1993; Kuroda, 2005).

The aim here was to investigate the hypothesis of decreasing σ_{xylem} in Norway spruce (*P. abies*) saplings during *E. polonica* infection, focusing on the tree hydraulics perspective at the later stage of infection, i.e. after visible symptoms occur in the xylem of infected trees. The role of σ_{xylem} in tree water transport is not well known, especially during biotic interactions. To the authors' knowledge, previous studies have not reported actual measurements of σ_{xylem} in infected trees. Our study may elucidate the physiological connection between *E. polonica* and its host tree, providing insight into the possible mechanisms involved in the decrease in tree vitality. We hypothesized that infection will result in (i) a decrease in σ_{xylem} and (ii) embolism formation with a decrease in xylem hydraulic conductivity. Thus, σ_{xylem} and stem hydraulic conductivity (K_{stem}) were measured along with canopy conductance (g_{canopy}), xylem water potential (Ψ_{stem}) and stem relative water content (RWC_{stem}). Additionally, analyses of chemical compounds in the xylem sap were conducted to determine whether the concentration of specific compounds would correlate with σ_{xylem} .

MATERIALS AND METHODS

Plant Material and Experiment Design

The study was conducted in a greenhouse at the Viikki campus of the University of Helsinki, Finland (60° 13' N 25° 1' E) from June 10 to September 15, 2016. The environmental conditions in the greenhouse were set to day and night temperatures (24±2°C and 20±3°C) and relative humidity (57±10% and 67±10%). The sapling material (approximately 1.2 m in height; diameter

above grafting 1.5±0.2 cm) was moved from the Haapastensyrjä nursery, southern Finland (60° 4' N, 24° 3' E) to Viikki campus in mid-May 2016. Two grafted clones (64 and 1510) of Norway spruce with 22 saplings in each clone were chosen as plant material for the study. Clones were used for reducing the variation caused by the tree genotypes in the studied tree responses to the *E. polonica* infection. The saplings were immediately replanted in 10-liter pots with a turf and soil mixture, and placed in the greenhouse. The saplings were allocated to three treatment groups: inoculated trees (10 per clone), wounded control trees (10 per clone), and intact control trees (2 per clone) for ruling out the wounding effect. The inoculated trees were inoculated with *E. polonica* (strain F5) (Linnakoski et al., 2017b) growing on 2% Malt Extract Agar (MEA). Inoculation was performed using a sterile 6 mm hole puncher to cut a bark disc, and an inoculum of the same size was placed onto the exposed xylem surface. The inoculation site was then covered with the bark disc and sealed with parafilm. The wounded trees were mock-inoculated following the same protocol, using sterile 2% MEA (later referred as wounded control), and the control trees were left intact. Each sapling was inoculated at approximately 40, 50, and 70 cm above the tree stem base, with the lowest site always above the grafting and all inoculations on the same side of the stem. The experiment with clone 64 began and ended a week before the experiment with clone 1510. Both clones, as well as the different treatments, were randomly distributed in the greenhouse. The saplings were irrigated weekly with approximately the same amount of water lost by transpiration during the week (~ 1 L).

Physiological Measurements

Physiological and hydraulic measurements are compiled in **Table 1**. Tree water relations were monitored weekly from the second week onwards after inoculation by measuring the whole-tree transpiration rate and Ψ_{stem} above the inoculation point. The transpiration rate was measured gravimetrically by weighing the water loss of the saplings over a few hours, at about the time of the highest transpiration. g_{canopy} was calculated as the sapwood area-specific whole-tree transpiration rate divided by the vapor pressure deficit (VPD). VPD was calculated from temperature and relative humidity, which were measured by a Priva measuring box (Priva, Beijing, China), and the mean VPD over each measurement time was used for the calculation of g_{canopy} . Ψ_{stem} was measured simultaneously with the transpiration measurement from detached needle tips with a Scholander-type custom-made pressure chamber. The needles were covered with an aluminum bag for approximately 20 min to stop transpiration before collection of needle tips for Ψ_{stem} measurement (e.g. Turner, 1988).

Sampling

Saplings were always sampled in pairs (one inoculated and one wounded control at the same time) with two to three repetitions per week altogether for 13 weeks per clone. The first saplings were sampled approximately 3 weeks after the experiment

TABLE 1 | Physiological and hydraulic variables studied in *Endoconidiophora polonica*-inoculated and wounded control *Picea abies* saplings.

	Variable	Sampled/measured from	Aim/purpose of measurement
σ_{xylem}	Xylem sap surface tension	Xylem sap collected from stem segment	σ_{xylem} is proportional to the xylem water potential that the tree withstands without embolism
K_{stem}	Stem hydraulic conductivity	Stem segment (xylem)	Xylem-specific hydraulic conductivity locally in the stem, a decrease indicates embolism
RWC_{stem}	Stem relative water content	Stem segment (xylem) adjacent to K_{stem} sample	Considerable decrease in stem relative water content indicates embolism
Ψ_{stem}	Stem water potential	Needles (equilibrated to xylem water potential)	Free energy of water, describes the plant water status
Transpiration rate	Whole-tree-level transpiration rate	Living sapling using a balance	Quantifies whole-tree water use
g_{canopy}	Canopy conductance ¹	Calculated by transpiration rate/VPD	Indicates stomatal regulation of tree water use
$K_{\text{stem,saturated}}$	Saturated stem hydraulic conductivity	K_{stem} stem segment after water saturation	Xylem-specific hydraulic conductivity in the stem when embolized conduits are refilled
PLC	Percentage loss of hydraulic conductivity	Calculated by Eq. 2 using K_{stem} and $K_{\text{stem,saturated}}$	Percentage of hydraulic conductivity lost because of embolism
Xylem sap compounds	Concentrations of xylem sap compounds	Xylem sap collected after σ_{xylem} sample	Analyzed for investigating the possible surfactants causing variations in σ_{xylem}

¹i.e. Stomatal conductance at canopy level.

started, starting with clone 64, thereafter sampling one clone every second week. The intact controls were sampled in weeks 6 and 13 following the treatment. The timing of the first samplings was determined in a trial experiment (not shown). This trial study indicated response to inoculation in embolism, detected by ultra-acoustic emission, ca. 2-3 weeks after inoculation.

Hydraulic Measurements

The uppermost inoculation point was used for the hydraulic conductivity (K_{stem}) measurement and the collection of the σ_{xylem} sample. K_{stem} is the hydraulic conductance per given length and cross-sectional area (e.g. within a stem segment). Once a piece of a tree stem (about 10 cm in length) was cut, it was sealed in a plastic zipper bag. Within half an hour from the sampling, bark was peeled from one centimeter of the sample piece end. Silicon tape was wrapped around the peeled part of the stem to ensure water flowed only through the xylem and not through the bark. Stem segment ends were cut under water and attached to tubes with silicon tape, the stem base end to the upper tube with a water column and the stem apex end to the lower tube measuring the water flow rate. Before installing the lower tube, the first water drops coming through the xylem were collected in a plastic tube and used for the σ_{xylem} measurements, apart from the first drop, which was discarded to avoid contamination of the σ_{xylem} sample. K_{stem} was measured by flow of water pushed through sampled stem segments with approximately 0.1 bar pressure (Sperry et al., 1988). The pressure was created by a 1-meter column of water solution with HCl, KCl, and milli-Q water (pH ~ 2.2; osmolality 0.03 mol kg⁻¹) through a tube with diameter between 4 and 9 mm according to the diameter of the stem piece. Water flow rate through the stem pieces was measured from the water meniscus with a caliper for 20 min by measuring the water level in the tube in upright position. Thereafter, the volumetric water flow rate through the stem piece was calculated by multiplying with the cross-sectional tube area. In addition to the K_{stem} measurement, the saturated K_{stem} ($K_{\text{stem,saturated}}$) was measured after pulling

water through the stem pieces at ca. 0.8 bar pressure for 30 min with a vacuum pump (XX5522050, Millipore, MA, USA), and thereafter saturating the stem pieces in milli-Q water for 24 h prior to the measurement. Percentage loss of conductivity was thereafter calculated according to Pammenter and Van der Willigen (1998):

$$\text{PLC} = (1 - K_{\text{stem}}/K_{\text{stem,saturated}}) * 100. \quad (2)$$

The σ_{xylem} measurements were carried out with a capillary rise method using the setup of Vanhanen et al. (2008). Glass capillary tubes were cleaned with sulphuric acid and distilled water before each measurement. The contact on angle of the capillary tubes was expected to be close to zero as it is known to be for clean glass (Cras et al., 1999). Dry capillary tubes were then placed in a holder of the collected samples in plastic tubes at room temperature (20° C) for 1 h. The capillary rise was then measured with a hand-held caliper. The inner radius of the tubes was calibrated using distilled water, which has a well-known surface tension at a specified temperature. σ_{xylem} of the xylem was calculated according to Bikerman (1947) and Vanhanen et al. (2008):

$$\sigma = 1/2\rho g r(h + r/3), \quad (3)$$

where σ is surface tension (N m⁻¹), ρ is water density (kg m⁻³), g is the gravitational acceleration (9.81 m s⁻²), r is the radius of capillary tube (m), and h is the height of capillary rise inside the tube (m). In reality, the density of xylem sap is slightly higher than the density of water; however, xylem sap is such a dilute solution (Borghetti et al., 1991) that we disregarded the effect of dissolved solutes on xylem sap density. Each σ_{xylem} measurement is a mean of two measurements from the same sample.

RWC_{stem} was measured from a separate stem segment adjacent to the highest inoculation point. The fresh weight of a stem segment was weighed after removing the bark. The stem segment was then saturated in milli-Q water for 48 h, and the turgid weight was measured after extra water on the surface was

gently wiped away with paper. Thereafter, dry weight was measured after samples were oven dried at 80°C for 72 h. The RWC_{stem} was as follows:

$$RWC_{\text{stem}} = (FW - DW)/(TW - DW), \quad (4)$$

where FW is fresh weight, DW is dry weight, and TW is turgid weight. Inoculated and wounded control trees were always measured simultaneously in pairs when K_{stem} , σ_{xylem} and RWC_{stem} were measured.

Saturated stem water content was calculated as follows:

$$\text{Saturated stem water content} = (TW - DW)/DW. \quad (5)$$

Symptoms of Infection

The spread and damage caused by *E. polonica* were assessed by using calipers to measure lengths and widths of necrotic lesions on the bark and xylem surface after removing the bark. These symptoms were investigated to determine whether the inoculation treatment was successful. The total lesion length (above and below the inoculation) and width in the bark were measured from the inner surface of the bark. A colored area in the xylem cross-section was considered a lesion, and the conical lesion area to total cross-sectional xylem area ratio was calculated based on the tangential width of the lesion, measured at the widest point, and the radial depth of the lesion. The necrotic lesions are commonly used indicators of pathogen colonization (Krokene and Solheim, 1998), although accurate estimates of pathogen spread are challenging with this and other similar commonly used methods (Linnakoski et al., 2017b).

Chemical Analyses of Xylem Sap

Xylem sap for the chemical analyses was collected immediately after the surface tension sample was collected following the same protocol. The sap samples were stored in separate plastic tubes at -80°C. Samples from the same treatment and clones, collected during a week (two to three samples), were combined and analyzed as one sample. The sap was dried in a freeze-dryer and silylated with 0.5 mL of 20% TMSI-pyridine mixture [TMSI = 1-(trimethylsilyl)imidazole]. The dry matter of the sap was analyzed for its chemical composition by gas chromatography-mass spectrometry (GC-MS) analysis by using a HP 6890 GC system equipped with a mass selective detector 5973 and HP-5 capillary column (30 m × 0.25 mm i.d.; 0.25 μm film thickness). Helium was used as carrier gas at a flow rate of 1.5 mL/min. Heptadecanoic acid (C:17), 1-chlorodecane, and m-erythrit were used as internal standards for resin acids, terpenes, and monosaccharides, respectively. The chromatographic conditions for resin acids were as follows: initial temperature 180°C, temperature rate 5°C/min, final temperature 300°C for 5 min, injector temperature 280°C and split ratio 1:20, MS-interface temperature 300°C, and ion source temperature 230°C. Mass spectra were obtained by electron impact (EI mode) ionization energy 70 eV. Monoterpenes and sesquiterpenes were analyzed directly from the liquid sap solution with GC-MS, using the following conditions: initial temperature 30°C, rate 10°C/min, hold time 5 min; rate 40°C/min, hold time 2 min; final

temperature 230°C. For monosaccharides, the chromatographic conditions were as follows: initial temperature 110°C; rate of temperature increase 10°C/min; final temperature 320°C maintained for 14 min; injector temperature 260°C, and split ratio 1:20. The MS-interface temperature was 300°C and that for ion source was 230°C. All results were calculated by using an internal standard. Only samples from inoculated and wounded control trees were analyzed, as the sample amount was insufficient in the intact control trees with two intact control individuals per clone.

Statistical Analyses

Student's t-test and linear regression were used for statistical testing. Results were considered significant when P-value was less than or equal to 0.05. Statistical testing was carried out using R (v. 3.2.1, 2015, R Foundation for Statistical Computing, Vienna, Austria).

RESULTS

Symptoms of Infection

The inoculated trees had larger lesions than the wounded control trees ($P < 0.001$), accounting for 19% (clone 64) and 23% (clone 1510) of the xylem cross-sectional area at the inoculation site, with width approximately 1.6 cm in the bark of both clones, and total length 7.1 and 9.0 cm in the inner surface of the bark of clones 64 and 1510, respectively (see **Figure S1** in **Supplementary materials**). In the wounded control trees, the lesions were only slightly larger than the inoculation wound (6 mm), covering 6% and 5% of the xylem cross-sectional area at the inoculation point, and measuring 1.0 and 0.9 cm in width and 1.4 and 1.3 cm in length in the bark of clones 64 and 1510, respectively. Additionally, declines in tree vigor and habitus were visible in inoculated trees, e.g. desiccation of shoots above the inoculation was visible in some of the inoculated trees.

Xylem Sap Surface Tension and Tree Water Relations

The treatments began to diverge in terms of σ_{xylem} (**Figures 2A, B**) and K_{stem} (**Figures 2C, D**) at the first sampling in clone 1510 three weeks after inoculation, and subsequently in clone 64. The difference in K_{stem} was distinct in both clones towards the end of the experiment. However, the σ_{xylem} of inoculated trees returned to levels similar to the wounded control trees 13 weeks after the inoculation in clone 1510, whereas the σ_{xylem} of inoculated and wounded control trees in clone 64 differed also after 13 weeks. All σ_{xylem} observations differed from the surface tension of pure water (i.e. $\sim 0.073 \text{ N m}^{-1}$ at 20°C).

The RWC_{stem} describing the amount of wood desiccation was lower in inoculated saplings than in wounded controls in both clones throughout the experiment ($P < 0.01$; $n = 8/\text{treatment}/\text{clone}$) (**Figures 2E, F**). Neither g_{canopy} (**Figures 2G, H**) nor the Ψ_{stem} values differed between treatments (**Supplementary Figure S2**), indicating that there was no difference in stomatal conductance or water potential between the treatments.

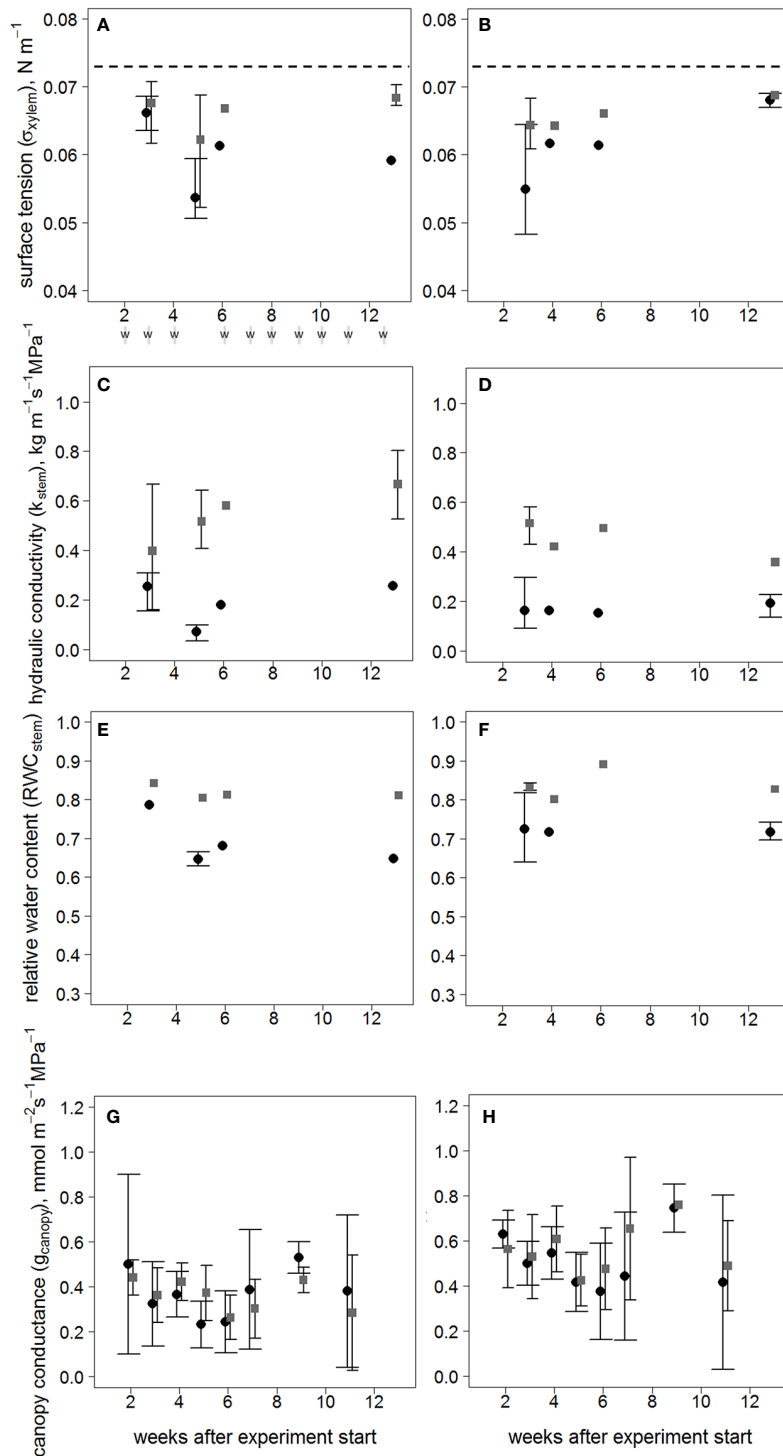


FIGURE 2 | Responses over time following treatment, after visible symptoms of infection have occurred in xylem for σ_{xylem} of clones 64 (A) and 1510 (B); K_{stem} clones 64 (C) and 1510 (D); RWC_{stem} clones 64 (E) and 1510 (F); and g_{canopy} calculated with the sapwood area-specific transpiration rate of clones 64 (G) and 1510 (H) in *Endoconidiophora polonica*-inoculated and wounded control *Picea abies* saplings. Inoculated trees are shown in black circles and wounded controls in gray squares. Error bars (with wide ticks in inoculated trees and narrow ticks in wounded controls) show the range between the minimum and maximum values (three observations), except in (G, H), where error bars represent standard deviations ($n=3-5$ /treatment/clone), and no error bars are present when only 1-2 trees were measured. Both inoculated trees and wounded controls were sampled simultaneously, and the points are separated in the figure only for clarity sake. Times of irrigation (w) are shown beneath (A). Dashed lines (in A, B) indicate the surface tension of pure water at 20 °C.

Mean K_{stem} was significantly lower in inoculated trees than in wounded controls in both clones ($P < 0.001$; $n = 9\text{--}11/\text{treatment}/\text{clone}$) (**Figure 3A**), indicating more embolism formation in the inoculated saplings. Mean σ_{xylem} was also significantly lower in inoculated trees when all observations, i.e. both clones, were examined together ($P < 0.05$; $n = 20/\text{treatment}$), and in clone 64 ($P < 0.05$; $n = 10\text{--}11/\text{treatment}$) (**Figure 3B**). Statistical significance between the treatment groups was not tested within each individual measurement day due to the limited number of saplings and the destructive nature of the sampling. The mean σ_{xylem} was 0.066 N m^{-1} in the wounded control trees of both clones, and 0.060 and 0.062 N m^{-1} in inoculated clone 64 and 1510 trees, respectively (**Figure 3B**). σ_{xylem} values from clone 64 saplings ranged between 0.051 and 0.069 N m^{-1} (inoculated trees) and between 0.052 and 0.071 N m^{-1} (wounded control). However, only one observation from the wounded control trees was below 0.06 N m^{-1} , whereas most of the observations in the inoculated trees were below 0.06 N m^{-1} . In clone 1510 saplings, the σ_{xylem} values ranged between 0.048 and 0.069 N m^{-1} (inoculated trees) and between 0.061 and 0.072 N m^{-1} (wounded control). In intact control trees, the σ_{xylem} ranged between 0.065 and 0.066 N m^{-1} (clone 64) and between 0.062 and 0.068 N m^{-1} (clone 1510).

When excluding the data points where $K_{\text{stem,saturated}}$ was smaller than K_{stem} , the inoculated trees demonstrated higher PLC than the wounded controls (14% vs. 6%) (see **Supplementary Figure S3**), albeit without statistical significance ($P = 0.08$; $n = 9\text{--}12/\text{treatment}$). However, $K_{\text{stem,saturated}}$ ($P < 0.001$; $n = 13\text{--}15/\text{treatment}$) and saturated stem water content ($P < 0.001$; $n = 17\text{--}18/\text{treatment}$) were lower in the inoculated trees (see **Supplementary Figure**

S4), indicating that not all conduits could be refilled with water in the inoculated samples, and therefore, the PLC calculations for the inoculated samples represent underestimates of the actual PLC, and the results based on PLC calculations should be treated with caution.

K_{stem} correlated positively with σ_{xylem} in the inoculated trees, whereas there was no correlation in the wounded control trees (**Figure 4A**). Additionally, RWC_{stem} of the inoculated trees correlated with σ_{xylem} (**Figure 4B**). RWC_{stem} remained constant in relation to K_{stem} in wounded controls compared with inoculated trees (**Figure 4C**). RWC_{stem} for a given Ψ_{stem} was lower in inoculated trees (**Figure 4D**).

Compounds in Xylem Sap

In xylem sap, the total concentration of compounds was larger in inoculated trees than in the wounded controls in only clone 64 (**Table 2**). Increased concentrations of quinic acid and alkylphenol ($P < 0.05$) were found in xylem sap of inoculated trees in clone 1510. Quinic acid concentration increased in xylem sap, especially in the last measurements after recovery in K_{stem} and σ_{xylem} in inoculated trees in clone 1510 (see **Supplementary Figure S5**). In addition, myo-inositol and sucrose concentrations were significantly higher in inoculated trees ($P < 0.05$) when both clones were examined together. K_{stem} of inoculated trees correlated negatively with myo-inositol concentrations in the xylem sap (see **Supplementary Figure S5A**). Myo-inositol of xylem sap correlated negatively also with σ_{xylem} (see **Supplementary Figure S5B**). In addition, the inositol isomer correlated negatively with σ_{xylem} ($R^2 = 0.41$; $P < 0.01$) and K_{stem} ($R^2 = 0.58$; $P < 0.05$) (not shown).

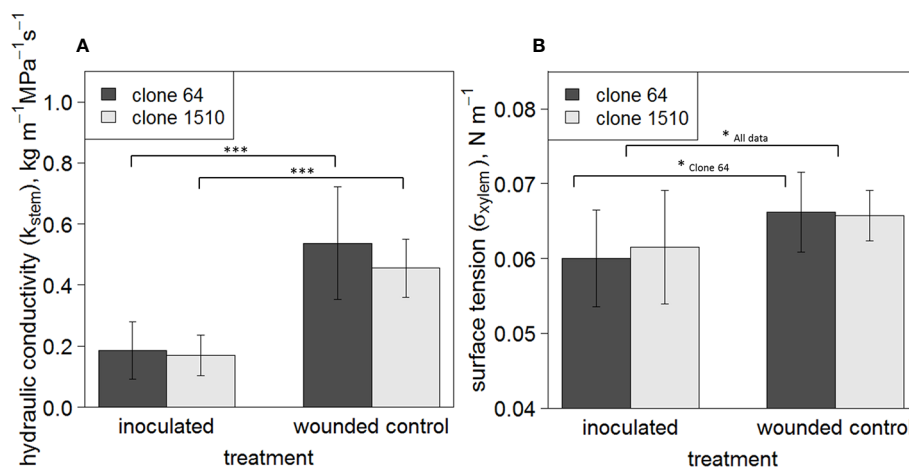


FIGURE 3 | Mean K_{stem} (A) and σ_{xylem} (B) of clones 64 and 1510. Error bars show standard deviations. Observations include all sampled *Endoconidiophora polonica* inoculated and wounded control *Picea abies* saplings in the experiment ($n = 9\text{--}11/\text{treatment}/\text{clone}$). Statistically significant differences between treatments are found in K_{stem} ($P < 0.001$; $n = 9\text{--}11/\text{treatment}/\text{clone}$), and in σ_{xylem} when all trees are pooled together ($P < 0.05$; $n = 20/\text{treatment}$) and in clone 64 ($P < 0.05$; $n = 10\text{--}11$). Statistically significant differences between treatments are indicated by symbols: * $P < 0.05$; *** $P < 0.001$. Brackets in (A) indicate to statistically significant differences in clones 64 and 1510 separately, whereas in (B) the statistically significant difference between treatments is shown for clone 64 and when both clones are pooled together.

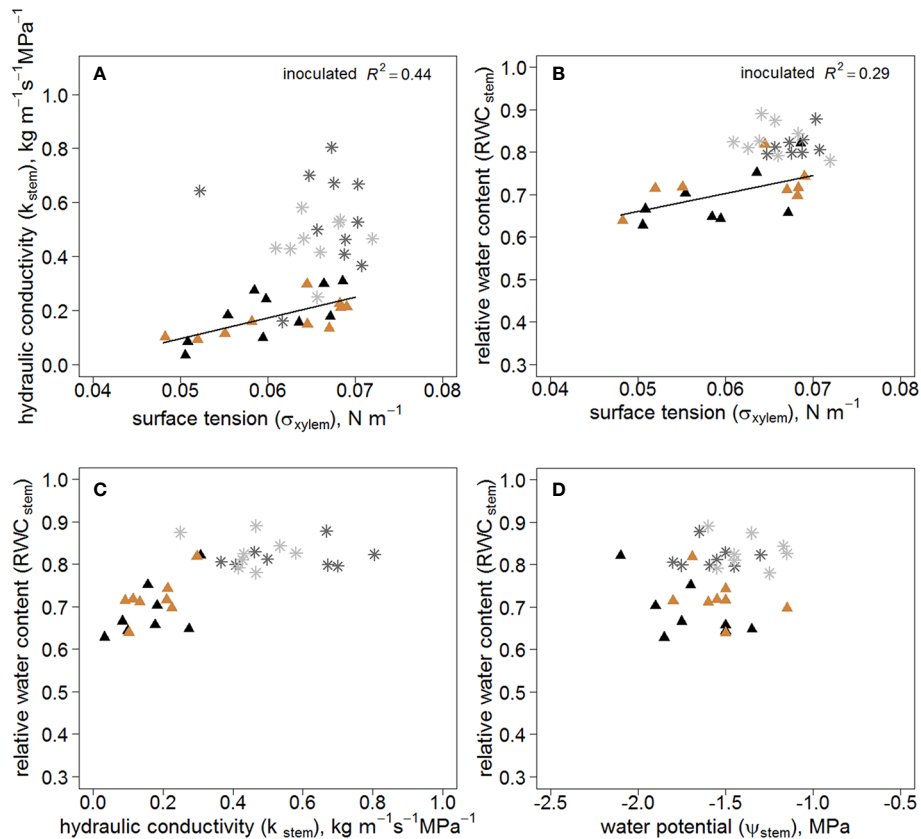


FIGURE 4 | K_{stem} (A) ($n=20/\text{treatment}$) and RWC_{stem} (B) ($n=16/\text{treatment}$) as a function of σ_{xylem} ; RWC_{stem} in relation to K_{stem} (C) ($n=16/\text{treatment}$) and Ψ_{stem} (D) ($n=16/\text{treatment}$) in all measured *Endoconidiophora polonica* inoculated and wounded control *Picea abies* saplings. Inoculated trees are shown in black (clone 64) and light brown (clone 1510) triangles, and the wounded controls in dark grey (clone 64) and light grey (clone 1510) star symbols in the figure. The linear regression equations of σ_{xylem} and K_{stem} (A) $y=-0.288+7.665x$, ($P < 0.01$); and σ_{xylem} and RWC_{stem} (B) $y=0.45 + 4.24x$, ($P < 0.05$).

DISCUSSION

Our preliminary study with clonal Norway spruce saplings showed that *E. polonica* inoculation resulted in a significant decrease in σ_{xylem} , and hampered water transport in inoculated trees, thus confirming earlier studies (Horntvedt et al., 1983; Christiansen and Fjone, 1993; Kirisits and Offenthaler, 2002; Sallé et al., 2005). The observed significant decrease in σ_{xylem} in the inoculated trees has been previously hypothesized to affect tree water transport during pathogenic infections (Tyree and Sperry, 1989; Christiansen and Fjone, 1993; Kuroda, 2005; Lachenbruch and Zhao, 2019). Our results indicate that inoculated trees experienced hampered water transport locally, which was not observable in whole-tree-level water use. The measured lesions in the bark and xylem indicated that *E. polonica* infection caused visible reactions in the inoculated trees (Lahr and Krokene, 2013) before measurements of both K_{stem} and σ_{xylem} were conducted. Additionally, desiccation of shoots above the inoculation was visible in some of the inoculated trees. *E. polonica* inoculation have been reported to result in canopy desiccation after losing some of the conducting tissue in xylem of

P. abies in other studies (Horntvedt et al., 1983; Christiansen and Fjone, 1993; Kirisits and Offenthaler, 2002), and in other tree species (Kuroda, 2005). The inoculation treatment in the present study was considered a high dosage for the saplings (Krokene et al., 1999).

E. polonica infection resulted in changes in tree K_{stem} , σ_{xylem} and RWC_{stem} locally at the site of inoculation in the stem, while there was no clear difference in g_{canopy} and Ψ_{stem} . The decrease in local K_{stem} without a noticeable decrease in g_{canopy} may be explained by the tree hydraulic architecture. Most of the resistance to water transport is in the distal parts (i.e. needles and fine roots) and in the soil-to-root interface (Tyree and Zimmermann, 2002). Therefore, a reduction in local K_{stem} would have to be drastic in order to cause a noticeable effect at the whole-plant level. A noticeable effect on water transport in *E. polonica*-infected mature *P. abies* trees has been observed only after a large decrease in K_{stem} (Horntvedt et al., 1983; Kirisits and Offenthaler, 2002). In the present study, the stomata seemed to respond to changes in Ψ_{stem} rather than to the decrease in K_{stem} (see also Hölttä et al., 2012) because there was no difference in g_{canopy} or water potential between the treatments.

TABLE 2 | Compounds analyzed from the extracted xylem sap from *Endoconidiophora polonica* inoculated and wounded control *Picea abies* saplings.

Clone treatment	64		1510	
	Inoculation	Wounded control	Inoculation	Wounded control
	Mean ± SD	Mean ± SD	Mean ± SD	Mean ± SD
<i>Carboxylic acids</i>				
Malic acid	0.07 ± 0.03	0.09 ± 0.04	0.17 ± 0.04	0.14 ± 0.02
Quinic acid* (1510)	0.05 ± 0.01	0.04 ± 0.02	0.07 ± 0.02	0.04 ± 0.01
<i>Cyclitols and sugars</i>				
Pinitol	0.45 ± 0.20	0.22 ± 0.04	0.39 ± 0.06	0.42 ± 0.23
Myo-inositol*	0.03 ± 0.02	0.02 ± 0.01	0.04 ± 0.01	0.03 ± 0.01
Inositol isomer	0.02 ± 0.02	0.01 ± 0.00	0.03 ± 0.01	0.01 ± 0.01
α-glucose	0.24 ± 0.16	0.12 ± 0.03	0.42 ± 0.36	0.41 ± 0.24
β-glucose	0.41 ± 0.27	0.20 ± 0.05	0.72 ± 0.62	0.71 ± 0.39
fructose	0.68 ± 0.56	0.37 ± 0.10	1.08 ± 0.88	1.60 ± 0.67
d- Psicose	0.17 ± 0.14	0.09 ± 0.02	0.32 ± 0.27	0.44 ± 0.23
Sucrose*	1.05 ± 0.60	0.41 ± 0.11	0.79 ± 0.36	0.39 ± 0.33
Alkylphenol* (1510)	0.04 ± 0.03	0.04 ± 0.03	0.12 ± 0.06	0.01 ± 0.01
Sum	3.22 ± 0.95	1.61 ± 0.29	4.14 ± 2.46	4.20 ± 1.30

No intact control trees are included since the number of samples was too low. Standard deviations are shown adjacent to mean values. Significant differences in concentrations between the treatments are indicated by * $P < 0.05$; ** $P < 0.01$; *** $P < 0.001$. Compound concentration units are mg mL^{-1} . Clone number is in parentheses after significance symbols if statistical significance was found in only one of the clones.

We found a decrease in RWC_{stem} approximately 10 cm above the inoculation points. The decrease in K_{stem} and RWC_{stem} both indicate substantial embolism formation in the xylem (Tyree et al., 1994; Domec et al., 2004; Rosner et al., 2019). The higher PLC in inoculated trees also indicates a higher amount of embolism, which also relates closely to a decrease in RWC_{stem} (Rosner et al., 2019). However, the PLC results should be treated with caution since not all embolized conduits are expected to refill in conifers due to e.g. tyloses formation or aspirated pits (Flynn, 2007; Hietz et al., 2008). The saturated stem water content was also consistently smaller in the inoculated trees in our study, indicating that there are challenges in the refilling of xylem conduits and that the PLC was underestimated in the inoculated samples. Thus, if the loss of hydraulic conductivity was caused only by mechanical blockage because of the fungus or host tree defense responses, we would not expect the saturation after the initial hydraulic conductivity measurement to restore the hydraulic conductivity. RWC_{stem} has been reported to decrease above and below the *E. polonica* inoculations also in the sapwood of mature *P. abies* trees (Horntvedt et al., 1983). Kuroda (2005) found that the sapwood of *Picea jezoensis* desiccated more than 20 cm above the inoculation point preceding the hyphae of *E. polonica*. However, the spread of fungus hyphae was not examined in the present study.

The K_{stem} and RWC_{stem} correlated with σ_{xylem} in inoculated trees, but not in wounded control trees, and the RWC_{stem} and K_{stem} were at distinct levels between the treatments, although the Ψ_{stem} values were similar. This is consistent with the theoretical prediction that a decrease in σ_{xylem} will decrease RWC_{stem} and K_{stem} at a given Ψ_{stem} (as depicted in Figure 1), i.e. that embolism and desiccation of conduits will start already in milder water stress due to decreased σ_{xylem} . Lowering the σ_{xylem} from pure water (0.073 N m^{-1}) to 0.055 N m^{-1} would lower the P_{50} , the Ψ_{stem} where 50% of the conductivity in water transport is lost because of embolism, from -3.5 (Bartlett et al., 2016, González-Muñoz et al., 2018) to -2.6 MPa in *P. abies* (as depicted in Figure 1 and Cochard et al., 2009). *E. polonica* has previously been hypothesized to affect the σ_{xylem} and disable its function by causing embolism formation (Christiansen and Fjone, 1993; Kuroda, 2005). Recently, also other studies have reported that σ_{xylem} decreased below that of pure water. Losso et al. (2017) described seasonal fluctuations in σ_{xylem} ranging between 0.054 and 0.067 N m^{-1} in Norway spruce. Moreover, Christensen-Dalsgaard et al. (2011) and Schenk et al. (2017) measured a σ_{xylem} lower than that of pure water in angiosperm species. The majority of our σ_{xylem} results, in both inoculated and control trees, are similar to those of Losso et al. (2017), but in our study the range of values was slightly higher. Hence, also in our study the σ_{xylem} sap differs clearly from that of pure water, which increases the vulnerability of the xylem to embolism formation.

We were unable to identify any specific surfactant compounds that caused the lowered σ_{xylem} . We expected to find negative correlations between σ_{xylem} and specific identified surfactant compounds in xylem sap, but found only a significant negative correlation with myo-inositol. Myo-inositol has been noted to increase—not decrease—the surface tension in a solution in earlier studies (Kaushik and Bhat, 1998), and therefore, another mechanism must be responsible for the negative correlations of K_{stem} and σ_{xylem} with myo-inositol concentrations. Myo-inositol is known to be connected to several metabolic processes such as growth, signaling, stress responses, and osmoregulation (Loewus and Murthy, 2000; Meijer and Munnik, 2003; Valluru and Van den Ende, 2011). Thus, rising abiotic or biotic stress may increase the myo-inositol concentrations in xylem sap. Increased quinic acid concentrations, such as those found in inoculated clone 1510 saplings, have previously been observed in grapevines during a bacterial pathogen infection (Wallis and Chen, 2012). Increased sucrose concentration in xylem sap is probably not lowering the σ_{xylem} in our study, as sucrose, as well as glucose, acts contrary to surfactants (Matubayasi and Nishiyama, 2006). Malic acid is known to be a moderate surfactant (Hyvärinen et al., 2006), but its concentrations were not different between treatments, nor was there a clear relation with σ_{xylem} . The monoterpene pinene, another candidate compound and involved in local tree defense responses (Baier et al., 2002), decreases surface tension, but the effect is low because of its limited solubility (DeWitt and Makens, 1932). However, pinene or other compounds of resin were not detected in the xylem sap (e.g. Nagy et al., 2000).

It is also possible that the surface tension reduction is not caused by a single compound, but rather by the properties of the solution mixture. The surface tension of a solution may decrease with the increasing solute concentration or with changes in solute composition in a given mixture of compounds, as reported for fatty acids and model humic-like substances in mixtures with inorganic salts (Prisle et al., 2010; Kristensen et al., 2014). Surface tension of a solution is always a function of the solution composition, and thus, the contribution of single compounds is challenging to assess (e.g. Aumann et al., 2010; Kristensen et al., 2014). Therefore, the decrease in σ_{xylem} also in control trees may result from varying amounts of surfactants either in lower concentrations or in a less efficient overall mixture of surfactants in the xylem sap. The different behavior of σ_{xylem} in inoculated and wounded controls may thus result from additional compounds affecting the solution mixture and the σ_{xylem} .

The decrease in K_{stem} and RWC_{stem} seemed to be permanent, while σ_{xylem} recovered, at least in clone 1510. This indicates that the embolisms were either not refilled, or other reasons, such as mechanical blockage, prevented the recovery in K_{stem} . Loss in K_{stem} may also be initiated from the formation of tylosoids, pit aspiration, embolism, and/or release of epithelial cell content in the apoplast (Yazaki et al., 2017). However, as our sampling began after the visible symptoms in xylem had occurred, we can only speculate about the initial reasons for decreased K_{stem} in the early stage of infection. *E. polonica* has been shown to proceed deeper in the sapwood through the ray parenchyma cells (Franceschi et al., 1998; Kuroda, 2005). The ray parenchyma spanning across the stem, from inner bark to stem pith (Plavcová and Jansen, 2015), provide a route for the spread of fungus hyphae (Franceschi et al., 1998). The disabling of conducting tissue can also be the result of Norway spruce defense reactions, where accumulating compounds block the invaded tissue (Ballard et al., 1982; Christiansen, 1985; Yamada, 1992). Lesions, induced by the fungal infection and host tree responses, hinder the spread of *E. polonica* with structural barriers and more effective resin compounds (Woodward and Pearce, 1988; Solheim, 1991; Krokene et al., 1999; Viiri et al., 2001). The induced structural barriers may, in turn, affect the water-conducting properties of the xylem tissue, apart from the embolism that recovered after water saturation (as shown above with PLC and RWC measurements).

In conclusion, a decrease in xylem sap surface tension, embolism formation, and a decrease in xylem hydraulic conductivity were observed in *E. polonica*-inoculated trees, as we hypothesized. However, as we started our sampling at the later stage of infection, we are unable to pinpoint the chain of events between the host and the pathogen that led to the correlation between xylem sap surface tension and a decrease in xylem hydraulic conductivity. Xylem sap surface tension may have decreased first, which was followed by embolism formation and a decrease in hydraulic conductivity. Alternatively, the host tree may first have induced cellular responses to infection or the pathogen may have first inflicted mechanical damage to e.g. the resin ducts and/or parenchyma cells, which could have released part of their content to the xylem sap and lowered the surface tension. A decrease in xylem sap surface tension would be important for the tree

vulnerability to embolism whether it occurs before or after an initial decrease in hydraulic conductivity, as shown by previous studies (Sperry and Tyree, 1988; Cochard et al., 2009; Hölttä et al., 2012). Our results also indicated that part of the desiccated xylem conduits recovered after refilling with water and that not only mechanical blockage caused the decline in stem hydraulic conductivity. Further investigations of pathogen-host interactions are warranted, as the mechanisms and compounds causing the decreased xylem sap surface tension were not identified. Especially, the limited number of sampled trees prevented us from detecting the early stages of disease development. Furthermore, studies with mature trees are needed to investigate our results in natural conditions, as our study was conducted with saplings under greenhouse conditions. For example, the magnitude and efficiency of tree responses may differ between the bark beetle-vectored *E. polonica* infection in natural conditions and sole inoculation of *E. polonica* (Lahr and Krokene, 2013).

DATA AVAILABILITY STATEMENT

All datasets generated for this study are included in the article/**Supplementary Material**.

AUTHOR CONTRIBUTIONS

TH, RK, JB, YS, and TP conceived the study. TP, KR, AV, and RL were responsible for establishing the study setup. TP measured the tree water relations, measured infection lesions with KR, and prepared the chemical sampling with KR, TJ, and TL. RL and RK helped to interpret the results from the tree pathology perspective. NP and JL were responsible for the interpretation of the surface tension results. TJ and TL planned and conducted the chemical analyses of xylem sap. All authors contributed to the article and approved the submitted version.

FUNDING

This work was supported by the Academy of Finland grant nos. 324014, 272041, and 305763, the Finnish Cultural Foundation grant no. 00180821, and the Japan Society for the Promotion of Science (JSPS) KAKENHI (grant no. 26-04395). NLP and JLL gratefully acknowledge funding from the European Research Council (ERC) under the European Union's Horizon 2020 research and innovation programme, Project SURFACE (grant agreement no. 717022), and the Academy of Finland (grant nos. 308238 and 314175).

SUPPLEMENTARY MATERIAL

The Supplementary Material for this article can be found online at: <https://www.frontiersin.org/articles/10.3389/fpls.2020.01090/full#supplementary-material>

REFERENCES

- Aumann, E., Hildemann, L. M., and Tabazadeh, A. (2010). Measuring and modeling the composition and temperature-dependence of surface tension for organic solutions. *Atmos. Environ.* 44, 329–337. doi: 10.1016/j.atmosenv.2009.10.033
- Baier, P., Führer, E., Kirisits, T., and Rosner, S. (2002). Defence reactions of Norway spruce against bark beetles and the associated fungus *Ceratocystis polonica* in secondary pure and mixed species stands. *For. Ecol. Manage.* 159 (1–2), 73–86. doi: 10.1016/S0378-1127(01)00711-3
- Ballard, R., Walsh, M., and Cole, W. (1982). Blue-stain fungi in xylem of lodgepole pine: a light-microscope study on extent of hyphal distribution. *Can. J. Bot.* 60, 2334–2341. doi: 10.1139/b82-285
- Bartlett, M. K., Klein, T., Jansen, S., Choat, B., and Sack, L. (2016). The correlations and sequence of plant stomatal, hydraulic, and wilting responses to drought. *Proc. Natl. Acad. Sci.* 113 (46), 13098–13103. doi: 10.1073/pnas.1604088113
- Bikerman, J. J. (1947). *Surface Chemistry for Industrial Research* (New York: Academic Press Inc., Publishers).
- Borghetti, M., Edwards, W. R. N., Grace, J., Jarvis, P. G., and Raschi, A. (1991). The refilling of embolized xylem in *Pinus sylvestris* L. *Plant Cell Environ.* 14, 357–369. doi: 10.1111/j.1365-3040.1991.tb00944.x
- Brodribb, T. J., and Cochard, H. (2009). Hydraulic failure defines the recovery and point of death in water-stressed conifers. *Plant Physiol.* 149, 575–584. doi: 10.1104/pp.108.129783
- Choat, B., Jansen, S., Zwieniecki, M. A., Smets, E., and Holbrook, N. M. (2004). Changes in pit membrane porosity due to deflection and stretching: the role of vested pits. *J. Exp. Bot.* 55, 1569–1575. doi: 10.1093/jxb/erh173
- Christensen-Dalsgaard, K. K., Tyree, M. T., and Mussone, P. G. (2011). Surface tension phenomena in the xylem sap of three diffuse porous temperate tree species. *Tree Physiol.* 31, 361–368. doi: 10.1093/treephys/tp1018
- Christiansen, E., and Fjone, G. (1993). Pruning enhances the susceptibility of *Picea abies* to infection by the bark beetle-transmitted blue-stain fungus, *Ophiostoma polonicum*. *Scand. J. For. Res.* 8, 235–245. doi: 10.1080/02827589309382773
- Christiansen, E. (1985). *Ceratocystis polonica* inoculated in Norway spruce: Blue-staining in relation to inoculum density, resinosis and tree growth. *Eur. J. For. Pathol.* 15, 160–167. doi: 10.1111/j.1439-0329.1985.tb00880.x
- Cochard, H., Hölltä, T., Herbette, S., Delzon, S., and Mencuccini, M. (2009). New insights into the mechanisms of water-stress-induced cavitation in conifers. *Plant Physiol.* 151, 949–954. doi: 10.1104/pp.109.138305
- Cras, J. J., Rowe-Taitt, C. A., Nivens, D. A., and Ligler, F. S. (1999). Comparison of chemical cleaning methods of glass in preparation for silanization. *Biosens. Bioelectron.* 14, 683–688. doi: 10.1016/S0956-5663(99)00043-3
- Crombie, D. S., Milburn, J. A., and Hipkins, M. F. (1985). Maximum sustainable xylem sap tensions in *Rhododendron* and other species. *Planta* 163, 27–33. doi: 10.1007/BF00395893
- Delzon, S., Douthe, C., Sala, A., and Cochard, H. (2010). Mechanism of water-stress induced cavitation in conifers: bordered pit structure and function support the hypothesis of seal capillary-seeding. *Plant Cell Environ.* 33, 2101–2111. doi: 10.1111/j.1365-3040.2010.02208.x
- DeWitt, C. C., and Makens, R. F. (1932). The surface relations of the components of pine oil and of potassium ethyl xanthate. III. *J. Am. Chem. Soc.* 54, 455–464. doi: 10.1021/ja01341a007
- Domec, J. C., Warren, J. M., Meinzer, F. C., Brooks, J. R., and Coulombe, R. (2004). Native root xylem embolism and stomatal closure in stands of Douglas-fir and ponderosa pine: mitigation by hydraulic redistribution. *Oecologia* 141, 7–16. doi: 10.1007/s00442-004-1621-4
- Domec, J. (2011). Let's not forget the critical role of surface tension in xylem water relations. *Tree Physiol.* 31, 359–360. doi: 10.1093/treephys/tp1039
- Flynn, K. A. (2007). A review of the permeability, fluid flow, and anatomy of spruce (*Picea* spp.). *Wood Fiber Sci.* 27, 278–284.
- Franceschi, V., Krekling, T., Berryman, A., and Christiansen, E. (1998). Specialized phloem parenchyma cells in Norway spruce (*Pinaceae*) bark are an important site of defense reactions. *Am. J. Bot.* 85, 601. doi: 10.2307/2446529
- Giordano, L., Garbelotto, M., Nicolotti, G., and Gonthier, P. (2013). Characterization of fungal communities associated with the bark beetle *Ips typographus* varies depending on detection method, location, and beetle population levels. *Mycol. Prog.* 12, 127–140. doi: 10.1007/s11557-012-0822-1
- González-Muñoz, N., Sterck, F., Torres-Ruiz, J. M., Petit, G., Cochard, H., von Arx, G., et al. (2018). Quantifying in situ phenotypic variability in the hydraulic properties of four tree species across their distribution range in Europe. *PLoS One* 13, e0196075. doi: 10.1371/journal.pone.0196075
- Hölltä, T., Juurola, E., Lindfors, L., and Porcar-Castell, A. (2012). Cavitation induced by a surfactant leads to a transient release of water stress and subsequent 'run away' embolism in Scots pine (*Pinus sylvestris*) saplings. *J. Exp. Bot.* 63, 1057–1067. doi: 10.1093/jxb/err349
- Hietz, P., Rosner, S., Sorz, J., and Mayr, S. (2008). Comparison of methods to quantify loss of hydraulic conductivity in Norway spruce. *Ann. For. Sci.* 65, 1. doi: 10.1051/forest:2008023
- Hornftvedt, R., Christiansen, E., Solheim, H., and Wang, S. (1983). Artificial inoculation with *Ips typographus*-associated blue stain fungi can kill healthy Norway spruce trees. *Meddelelser fra Skogforsk.* 38, 1–20.
- Hossain, M., Veneklaas, E. J., Hardy, G. E. S. J., and Poot, P. (2018). Tree host-pathogen interactions as influenced by drought timing: linking physiological performance, biochemical defence and disease severity. *Tree Physiol.* 39, 6–18. doi: 10.1093/treephys/tpy113
- Hyvärinen, A. P., Lihavainen, H., Gaman, A., Vairila, L., Ojala, H., Kulmala, M., et al. (2006). Surface tensions and densities of oxalic, malonic, succinic, maleic, malic, and cis-pinonic acids. *J. Chem. Eng. Data* 51, 255–260. doi: 10.1021/je050366x
- Jansen, S., Lamy, J. B., Burlett, R., Cochard, H., Gasson, P., and Delzon, S. (2012). Plasmodesmatal pores in the torus of bordered pit membranes affect cavitation resistance of conifer xylem. *Plant Cell Environ.* 35, 1109–1120. doi: 10.1111/j.1365-3040.2011.02476.x
- Kaushik, J. K., and Bhat, R. (1998). Thermal stability of proteins in aqueous polyol solutions: role of the surface tension of water in the stabilizing effect of polyols. *J. Phys. Chem. B* 102, 7058–7066. doi: 10.1021/jp9811191
- Kautz, M., Meddens, A. J., Hall, R. J., and Arneith, A. (2017). Biotic disturbances in Northern Hemisphere forests—a synthesis of recent data, uncertainties and implications for forest monitoring and modelling. *Global Ecol. Biogeogr.* 26, 533–552. doi: 10.1111/geb.12558
- Kirisits, T., and Offenthaler, I. (2002). Xylem sap flow of Norway spruce after inoculation with the blue-stain fungus *Ceratocystis polonica*. *Plant Pathol.* 51, 359–364. doi: 10.1046/j.1365-3059.2002.00722.x
- Kristensen, T. B., Prisle, N. L., and Bilde, M. (2014). Cloud droplet activation of mixed model HULIS and NaCl particles: Experimental results and κ-Köhler theory. *Atmos. Res.* 137, 167–175. doi: 10.1016/j.atmosres.2013.09.017
- Krokene, P., and Solheim, H. (1998). Pathogenicity of four blue-stain fungi associated with aggressive and nonaggressive bark beetles. *Phytopathology* 88, 39–44. doi: 10.1094/PHTO.1998.88.1.39
- Krokene, P., Christiansen, E., Solheim, H., Franceschi, V. R., and Berryman, A. A. (1999). Induced resistance to pathogenic fungi in Norway spruce. *Plant Physiol.* 121, 565–570. doi: 10.1104/pp.121.2.565
- Kuroda, K. (2005). Xylem dysfunction in Yezo spruce (*Picea jezoensis*) after inoculation with the blue-stain fungus *Ceratocystis polonica*. *For. Pathol.* 35, 346–358. doi: 10.1111/j.1439-0329.2005.00424.x
- Lachenbruch, B., and Zhao, J. P. (2019). Effects of Phloem on Canopy Dieback, Tested with Manipulations and a Canker Pathogen in the *Corylus avellana/Anisogramma anomala* Host/Pathogen System. *Tree Physiol.* 39, 1086–1098. doi: 10.1093/treephys/tpz027
- Lahr, E. C., and Krokene, P. (2013). Conifer stored resources and resistance to a fungus associated with the spruce bark beetle *Ips typographus*. *PLoS One* 8, e72405. doi: 10.1371/journal.pone.0072405
- Linnakoski, R., de Beer, Z. W., Niemelä, P., and Wingfield, M. J. (2012). Associations of conifer-infesting bark beetles and fungi in Fennoscandia. *Insects* 3, 200–227. doi: 10.3390/insects3010200
- Linnakoski, R., Mahilainen, S., Harrington, A., Vanhanen, H., Eriksson, M., Mehtätalo, L., et al. (2016). Seasonal succession of fungi associated with *Ips typographus* beetles and their phoretic mites in an outbreak region of Finland. *PLoS One* 11, e0155622. doi: 10.1371/journal.pone.0155622
- Linnakoski, R., Sugano, J., Junttila, S., Pulkkinen, P., Asiegbu, F. O., and Forbes, K. M. (2017a). Effects of water availability on a forestry pathosystem: fungal strain-specific variation in disease severity. *Sci. Rep.* 7, 13501. doi: 10.1038/s41598-017-13512-y
- Linnakoski, R., Forbes, K. M., Wingfield, M. J., Pulkkinen, P., and Asiegbu, F. O. (2017b). Testing projected climate change conditions on the *Endoconidiophora*

- polonica*/Norway spruce pathosystem shows fungal strain specific effects. *Front. Plant Sci.* 8, 883. doi: 10.3389/fpls.2017.00883
- Loewus, F. A., and Murthy, P. P. (2000). Myo-Inositol metabolism in plants. *Plant Sci.* 150, 1–19. doi: 10.1016/S0168-9452(99)00150-8
- Losso, A., Beikircher, B., Damon, B., Kikuta, S., Schmid, P., and Mayr, S. (2017). Xylem Sap Surface Tension May Be Crucial for Hydraulic Safety. *Plant Physiol.* 175, 1135–1143. doi: 10.1104/pp.17.01053
- Matthews, B., Netherer, S., Katzensteiner, K., Pennerstorfer, J., Blackwell, E., Henschke, P., et al. (2018). Transpiration deficits increase host susceptibility to bark beetle attack: Experimental observations and practical outcomes for *Ips typographus* hazard assessment. *Agric. For. Meteorol.* 263, 69–89. doi: 10.1016/j.agrformet.2018.08.004
- Matubayasi, N., and Nishiyama, A. (2006). Thermodynamic quantities of surface formation of aqueous electrolyte solutions VI. Comparison with typical nonelectrolytes, sucrose and glucose. *J. Colloid Interface Sci.* 298, 910–913. doi: 10.1016/j.jcis.2006.01.008
- McDowell, N., Pockman, W. T., Allen, C. D., Breshears, D. D., Cobb, N., Kolb, T., et al. (2008). Mechanisms of plant survival and mortality during drought: why do some plants survive while others succumb to drought? *New Phytol.* 178, 719–739. doi: 10.1111/j.1469-8137.2008.02436.x
- Meijer, H. J., and Munnik, T. (2003). Phospholipid-based signaling in plants. *Annu. Rev. Plant Biol.* 54, 265–306. doi: 10.1146/annurev.arplant.54.031902.134748
- Nagy, N. E., Franceschi, V. R., Solheim, H., Krekling, T., and Christiansen, E. (2000). Wound-induced traumatic resin duct development in stems of Norway spruce (*Pinaceae*): anatomy and cytochemical traits. *Am. J. Bot.* 87 (3), 302–313. doi: 10.2307/2656626
- Netherer, S., Matthews, B., Katzensteiner, K., Blackwell, E., Henschke, P., Hietz, P., et al. (2015). Do water-limiting conditions predispose Norway spruce to bark beetle attack? *New Phytol.* 205, 1128–1141. doi: 10.1111/nph.13166
- Pammenter, N. V., and Van der Willigen, C. (1998). A mathematical and statistical analysis of the curves illustrating vulnerability of xylem to cavitation. *Tree Physiol.* 18 (8-9), 589–593. doi: 10.1093/treephys/18.8-9.589
- Perry, T. J. (1991). A synopsis of the taxonomic revisions in the genus *Ceratocystis* including a review of blue-staining species associated with *Dendroctonus* bark beetles. *Gen. Tech. Rep. SO-86* Vol. 16 (New Orleans, LA: US Dept of Agriculture, Forest Service, Southern Forest Experiment Station), 86.
- Plavcová, L., and Jansen, S. (2015). “The role of xylem parenchyma in the storage and utilization of nonstructural carbohydrates,” in *Functional and ecological xylem anatomy* (Cham: Springer), 209–234.
- Prisle, N. L., Raatikainen, T., Laaksonen, A., and Bilde, M. (2010). Surfactants in cloud droplet activation: mixed organic-inorganic particles. *Atmos. Chem. Phys.* 10, 5663–5683. doi: 10.5194/acp-10-5663-2010
- Repe, A., Bojović, S., and Jurc, M. (2015). Pathogenicity of ophiostomatoid fungi on *Picea abies* in Slovenia. *For. Pathol.* 45, 290–297. doi: 10.1111/efp.12170
- Rosner, S., Heinze, B., Savi, T., and Dalla-Salda, G. (2019). Prediction of hydraulic conductivity loss from relative water loss: new insights into water storage of tree stems and branches. *Physiol. Plant* 165, 843–854. doi: 10.1111/ppl.12790
- Sallé, A., Monclus, R., Yart, A., Garcia, J., Romary, P., and Lieutier, F. (2005). Fungal flora associated with *Ips typographus*: frequency, virulence, and ability to stimulate the host defence reaction in relation to insect population levels. *Can. J. For. Res.* 35 (2), 365–373. doi: 10.1139/x04-186
- Schenk, H. J., Steppe, K., and Jansen, S. (2015). Nanobubbles: a new paradigm for air-seeding in xylem. *Trends Plant Sci.* 20, 199–205. doi: 10.1016/j.tplants.2015.01.008
- Schenk, H. J., Espino, S., Romo, D. M., Nima, N., Do, A. Y., Michaud, J. M., et al. (2017). Xylem surfactants introduce a new element to the cohesion-tension theory. *Plant Physiol.* 173, 1177–1196. doi: 10.1104/pp.16.01039
- Solheim, H. (1991). Oxygen deficiency and spruce resin inhibition of growth of blue stain fungi associated with *Ips typographus*. *Mycol. Res.* 95, 1387–1392. doi: 10.1016/S0953-7562(09)80390-0
- Sperry, J. S., and Tyree, M. T. (1988). Mechanism of water stress-induced xylem embolism. *Plant Physiol.* 88, 581–587. doi: 10.1104/pp.88.3.581
- Sperry, J. S., Donnelly, J. R., and Tyree, M. T. (1988). A method for measuring hydraulic conductivity and embolism in xylem. *Plant Cell Environ.* 11, 35–40. doi: 10.1111/j.1365-3040.1988.tb01774.x
- Turner, N. C. (1988). Measurement of plant water status by the pressure chamber technique. *Irrigation Sci.* 9 (4), 289–308. doi: 10.1007/BF00296704
- Tyree, M. T., and Sperry, J. S. (1989). Vulnerability of xylem to cavitation and embolism. *Annu. Rev. Plant Biol.* 40, 19–36. doi: 10.1146/annurev.pp.40.060189.000315
- Tyree, M. T., and Yang, S. (1990). Water-storage capacity of *Thuja*, *Tsuga* and *Acer* stems measured by dehydration isotherms. *Planta* 182, 420–426. doi: 10.1007/BF02411394
- Tyree, M. T., and Zimmermann, M. H. (2002). “Hydraulic architecture of whole plants and plant performance,” in *Xylem structure and the ascent of sap*. Eds. M. T. Tyree and M. H. Zimmermann (Berlin, Germany: Springer Berlin Heidelberg), 175–214.
- Tyree, M. T., Davis, S. D., and Cochard, H. (1994). Biophysical perspectives of xylem evolution: is there a tradeoff of hydraulic efficiency for vulnerability to dysfunction? *IAWA J.* 15, 335–360. doi: 10.1163/22941932-90001369
- Valluru, R., and Van den Ende, W. (2011). Myo-inositol and beyond—emerging networks under stress. *Plant Sci.* 181, 387–400. doi: 10.1016/j.plantsci.2011.07.009
- Vanhänen, J., Hyvärinen, A. P., Anttila, T., Raatikainen, T., Viisanen, Y., and Lihavainen, H. (2008). Ternary solution of sodium chloride, succinic acid and water; surface tension and its influence on cloud droplet activation. *Atmos. Chem. Phys.* 8, 4595–4604. doi: 10.5194/acp-8-4595-2008
- Viiiri, H., Annala, E., Kitunen, V., and Niemelä, P. (2001). Induced responses in stilbenes and terpenes in fertilized Norway spruce after inoculation with blue-stain fungus, *Ceratocystis polonica*. *Trees* 15, 112–122. doi: 10.1007/s004680000082
- Wallis, C. M., and Chen, J. (2012). Grapevine phenolic compounds in xylem sap and tissues are significantly altered during infection by *Xylella fastidiosa*. *Phytopathology* 102, 816–826. doi: 10.1094/PHYTO-04-12-0074-R
- Woodward, S., and Pearce, R. B. (1988). Wound-associated responses in Sitka spruce root bark challenged with *Phaeolus schweinitzii*. *Physiol. Mol. Plant Pathol.* 33, 151–162. doi: 10.1016/0885-5765(88)90050-1
- Yamada, T. (1992). “Biochemistry of gymnosperm xylem responses to fungal invasion,” in *Defense Mechanisms of Woody Plants Against Fungi*. Eds. R. A. Blanchette and A. R. Biggs (Berlin: Springer-Verlag), 147–164.
- Yazaki, K., Takanashi, T., Kanzaki, N., Komatsu, M., Levina, D. F., Kabeya, D., et al. (2017). Pine wilt disease causes cavitation around the resin canals and irrecoverable xylem conduit dysfunction. *J. Exp. Bot.* 69, 589–602. doi: 10.1093/jxb/erx417

Conflict of Interest: The authors declare that the research was conducted in the absence of any commercial or financial relationships that could be construed as a potential conflict of interest.

Copyright © 2020 Paljakka, Rissanen, Vanhatalo, Salmon, Jyske, Prisle, Linnakoski, Lin, Laakso, Kasanen, Bäck and Hölttä. This is an open-access article distributed under the terms of the Creative Commons Attribution License (CC BY). The use, distribution or reproduction in other forums is permitted, provided the original author(s) and the copyright owner(s) are credited and that the original publication in this journal is cited, in accordance with accepted academic practice. No use, distribution or reproduction is permitted which does not comply with these terms.