

Forest resources continue to increase in Finland

Finland is one of the most forested countries in Europe. Three quarters of Finland (about 23 million hectares) is forest, representing about 10% of the forest area in Europe.

The growing stock in Finland has steadily increased over the last 50 years, being now 2 464 million cubic meters (annual increment 110 million cubic meters). Since beginning of the 1970's increment has been higher than the total drain. In recent years, the annual fellings have been on average 68 million cubic meter per year (62% of the increment). In recent years, the annual net carbon sink of forests has been about 38 million CO₂ equivalent tonnes. The sustainable felling potential of the Finnish forests would be 85 million cubic meters of stem wood per year for the years 2015 - 2024.

The National Forest Inventory (NFI) of the Natural Resources Institute Finland (Luke) produces reliable information on forest resources, land use structure and forest ownership, forest health and biological diversity of forests.

**Boreal
Green Bioeconomy**

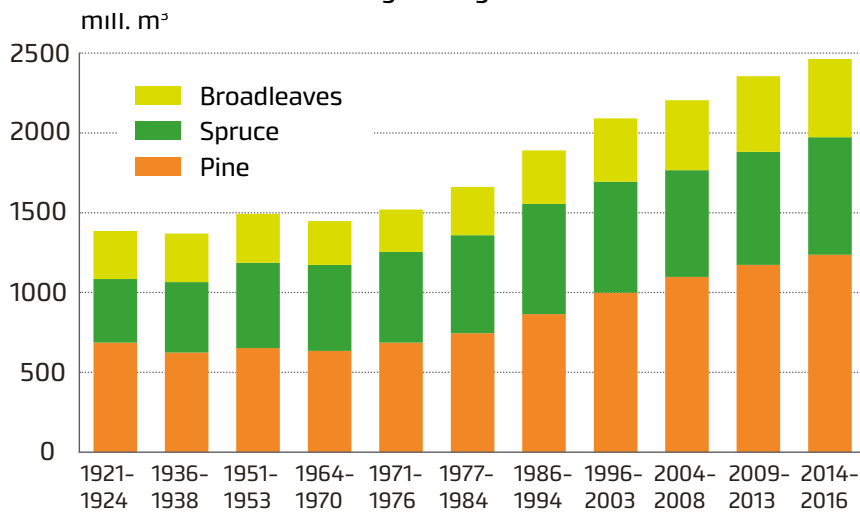
**Statutory and
expert services**

” Growing stock has steadily increased over the last decades ”



Key figures and trends of forest resources, carbon sequestration and felling potential in Finland

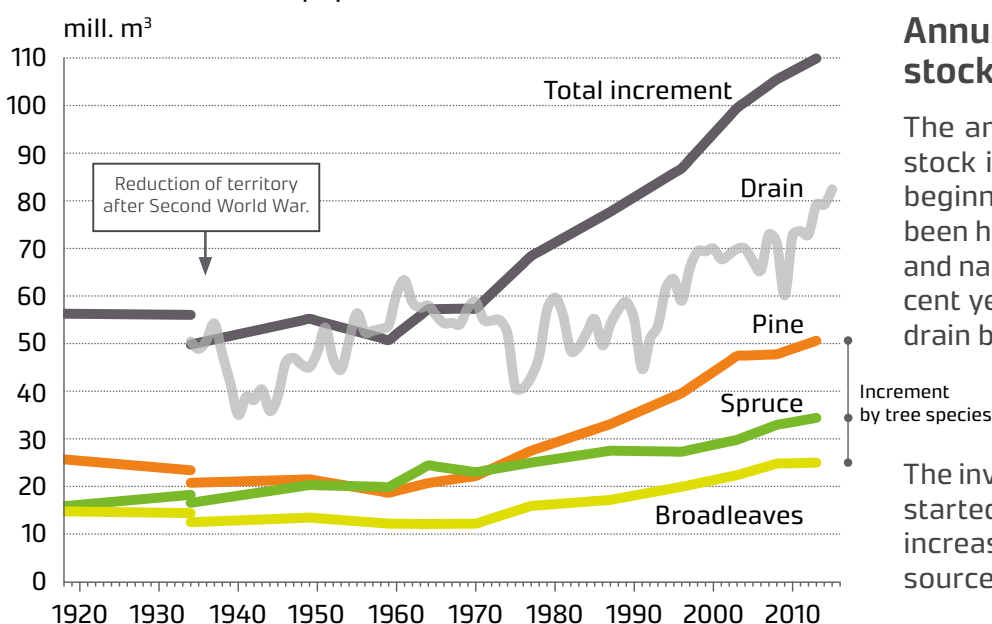
Volume of growing stock 1921-2016



Growing stock has steadily increased over the last decades

Finland forests have been regularly monitored by the National Forest Inventory (NFI) since beginning of the 1920's. The volume of growing stock has increased by more than 60 % since the early 1970's, being now 2 464 million cubic meters. The most common tree species are Scots pine (50% of growing stock), Norway spruce (30%) and birches (17%).

Increment by species and total drain 1918 - 2013



Annual increment of growing stock is higher than fellings

The annual increment of the growing stock is 110 million cubic meters. Since beginning of the 1970's increment has been higher than the total drain (fellings and natural mortality of trees), in the recent years increment has exceeded the drain by more than 25 %.

The investments in forest management, started in the 1930's, are now producing increasing possibilities to use forest resources in a sustainable way.