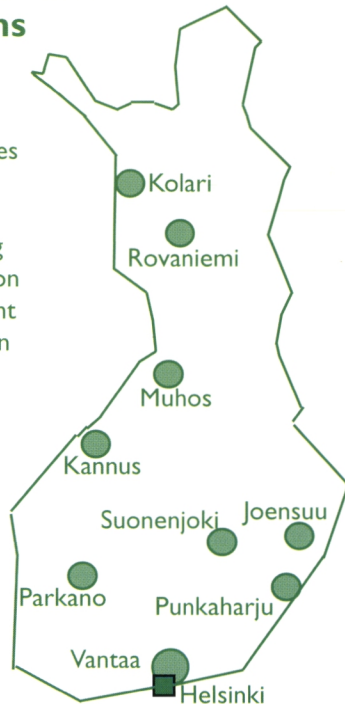


Research centres and research stations

The two research centres and seven research stations of Metla are responsible for carrying out research, information services and management of the research forests in their region.



Vantaa Research Centre produces information on ecologically, socially and economically sustainable use of forests. The research centre is responsible for informing national decision makers on forestry and forest policy issues. www.metla.fi/va/

Vantaa Unit carries out biological and technical research, forest tree breeding activities, and houses the central laboratory of Metla, library, and coordination of the research forest and field trial activities.

Helsinki Unit focuses mainly on social and economic research. The unit coordinates the National Forest Inventory and compiles forestry statistics.

The Head Office of the Institute and some of the support services are located in the Helsinki.

Joensuu Research Centre researches forest and forest product -based economic and enterprise activities. www.metla.fi/jo/

Kannus Research Station carries out research on wood energy and regional development in rural areas. www.metla.fi/ka/

Kolari Research Station focuses research on northern timberline forests, the effects of climate change on them, and reconciliation of multiple forest uses. www.metla.fi/ko/

Muhos Research Station researches forest regeneration and changes in the condition of forest environment, and develops silvicultural practices in its region. www.metla.fi/mu/

Parkano Research Station researches forest condition, sustainable forestry, and peatland forestry. www.metla.fi/pa/

Punkaharju Research Station carries out forest genetics research, especially biotechnology and resistance breeding, and forest tree improvement methods. www.metla.fi/pu/

Rovaniemi Research Station focuses research on northern forests and reconciliation of multiple forest uses. www.metla.fi/ro/

Suonenjoki Research Station carries out forest cultivation research, and manages Metla's research nursery. www.metla.fi/su/

Forest Research Institute
Head Office
Unioninkatu 40 A
FIN-00170 Helsinki

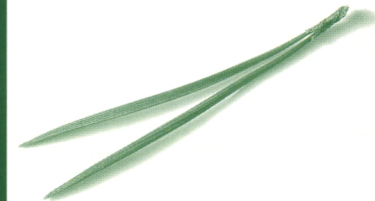
Information: Communication Unit
Tel. +358 9 8570 5261
Fax +358 9 8570 5677

FINNISH
FOREST
RESEARCH
INSTITUTE

METLA

www.metla.fi/

Metla
builds
the future
of the forest
sector through
research



METLA

The Finnish Forest Research Institute (Metla) was established in 1917, and started its activities in 1918. Today the network of Metla's research units and research forests covers the whole country.

Metla is an independent research organization under the supervision of the Ministry of Agriculture and Forestry. Metla is managed according to the principles of target management.

The target areas of Metla are:

- ♦ research
- ♦ research forest and laboratory activities
- ♦ communication and information services
- ♦ international activities
- ♦ administrative services



Research

Metla's activities are customer- and problem-orientated. The Institute's key strengths are its highly professional staff, high-standard scientific research, and active national and international cooperation.

Research activities are organized into over 160 problem-oriented research projects, which are further combined into multi-disciplinary research programmes. The main emphases of research are:

- ♦ Forest Regeneration in Southern Finland
- ♦ Competition and Public Support in Forestry
- ♦ National Forest Inventory
- ♦ Forest Management Planning
- ♦ Ecologically and Economically Sustainable Forestry on Drained Peatlands
- ♦ Alternatives of Silvicultural Practices in Forest Management and their Effects on Forest Production
- ♦ Forest Tree Breeding
- ♦ Pools and Fluxes of Carbon in Finnish Forests and their Socio-economic Implications

Publications

Scientific publication series

Metsätieteen aikakauskirja and Silva Fennica (published jointly by Metla and the Finnish Society of Forest Science). Silva Fennica is published in English.

Metsäntutkimuslaitoksen tiedonantoja -series

a series of research papers, published mainly in Finnish

Statistical publications

Finnish Statistical Yearbook of Forestry
Forest Statistical Bulletins,
National Reports on forest condition monitoring

Finnish Forest Sector Economic Outlook

published annually

Customer journal Metsäntutkimus

a quarterly journal about current issues in forest research, published in Finnish.



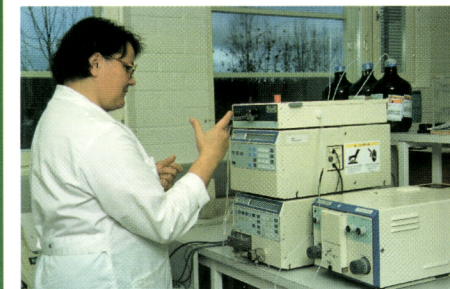
Staff

Metla employs over 800 people on a permanent basis, of whom 250 are researchers. Over 100 of the researchers have completed a doctor's degree (Ph.D.). One half of the staff are working in the Greater-Helsinki area, the other half at the regional units.

Services

Metla serves information end users and other interested parties by transferring research information through a number of channels:

- ♦ information and expert services
- ♦ statutory duties and public services
- ♦ Metinfo forest information service
www.metla.fi/metinfo/
- ♦ commissioned projects
- ♦ presentations and consultant services
- ♦ publications
- ♦ forecasts and outlooks



The **laboratories** of Metla serve research activities by developing and maintaining various laboratory services in order to produce high-standard research data. The analysis services are also available for external customers.

Metla's **network of research forests** includes altogether 150 000 hectares of land and watershed areas in over 20 locations in Finland. The network forms a basis for the Institute's long-term experiments and trials.

The research forests offer the visitor a gateway to forest research, research results, native and exotic tree species and forest nature. Nature centres, trails, tracks and other provided services facilitate access to nature and offer opportunities to enjoy beautiful scenery and widen one's knowledge on forest nature.