

This is an electronic reprint of the original article.

This reprint *may differ* from the original in pagination and typographic detail.

Author(s): Harry P. Andreassen, Janne Sundell, Fraucke Ecke, Stefan Halle, Marko Haapakoski, Heikki Henttonen, Otso Huitu, Jens Jacob, Kaja Johnsen, Esa Koskela, Juan Jose Luque-Larena, Nicolas Lecomte, Herwig Leirs, Joachim Mariën, Magne Neby, Osmo Rätti, Thorbjörn Sievert, Grant R. Singleton, Joannes van Cann, Bram Vanden Broecke & Hannu Ylönen

Title: Population cycles and outbreaks of small rodents: ten essential questions we still need to solve

Year: 2021

Version: Published version

Copyright: The Author(s) 2021

Rights: CC BY 4.0

Rights url: <http://creativecommons.org/licenses/by/4.0/>

Please cite the original version:

Andreassen, H.P., Sundell, J., Ecke, F. et al. Population cycles and outbreaks of small rodents: ten essential questions we still need to solve. *Oecologia* 195, 601–622 (2021).

<https://doi.org/10.1007/s00442-020-04810-w>

All material supplied via *Jukuri* is protected by copyright and other intellectual property rights. Duplication or sale, in electronic or print form, of any part of the repository collections is prohibited. Making electronic or print copies of the material is permitted only for your own personal use or for educational purposes. For other purposes, this article may be used in accordance with the publisher's terms. There may be differences between this version and the publisher's version. You are advised to cite the publisher's version.



Population cycles and outbreaks of small rodents: ten essential questions we still need to solve

Harry P. Andreassen¹ · Janne Sundell² · Fraucke Ecke⁴ · Stefan Halle⁵ · Marko Haapakoski³ · Heikki Henttonen⁶ · Otso Huitu⁶ · Jens Jacob⁷ · Kaja Johnsen¹ · Esa Koskela⁸ · Juan Jose Luque-Larena⁹ · Nicolas Lecomte¹⁰ · Herwig Leirs¹¹ · Joachim Mariën¹¹ · Magne Neby¹ · Osmo Rätti¹² · Thorbjörn Sievert² · Grant R. Singleton^{13,14} · Joannes van Cann⁸ · Bram Vanden Broecke¹¹ · Hannu Ylönen³

Received: 9 July 2020 / Accepted: 19 November 2020
© The Author(s) 2020

Abstract

Most small rodent populations in the world have fascinating population dynamics. In the northern hemisphere, voles and lemmings tend to show population cycles with regular fluctuations in numbers. In the southern hemisphere, small rodents tend to have large amplitude outbreaks with less regular intervals. In the light of vast research and debate over almost a century, we here discuss the driving forces of these different rodent population dynamics. We highlight ten questions directly related to the various characteristics of relevant populations and ecosystems that still need to be answered. This overview is not intended as a complete list of questions but rather focuses on the most important issues that are essential for understanding the generality of small rodent population dynamics.

Keywords Density dependence · Phase dependence · Voles · Mice · Lemmings

Communicated by Roland A. Brandl.

✉ Hannu Ylönen
hannu.j.ylonen@jyu.fi

¹ Faculty of Applied Ecology, Agricultural Sciences and Biotechnology, Inland Norway University of Applied Sciences, Campus Evenstad, 2480 Koppang, Norway

² Lammi Biological Station, University of Helsinki, Pääjärventie 320, 16900 Lammi, Finland

³ Department of Biological and Environmental Science, Konnevesi Research Station, University of Jyväskylä, P.O. Box 35, 40014 Jyväskylä, Finland

⁴ Department of Wildlife, Fish, and Environmental Studies, Swedish University of Agricultural Sciences, Skogsmarksgränd, 90183 Umeå, Sweden

⁵ Institute of Ecology and Evolution, Friedrich Schiller University Jena, Dornburger Str. 159, 07743 Jena, Germany

⁶ Terrestrial Population Dynamics, Natural Resources Institute Finland, Latokartanonkaari 9, 00790 Helsinki, Finland

⁷ Federal Research Centre for Cultivated Plants, Vertebrate Research, Julius Kühn-Institut, Toppheideweg 88, 48161 Münster, Germany

⁸ Department of Biological and Environmental Science, University of Jyväskylä, P.O. Box 35, 40014 Jyväskylä, Finland

⁹ Departamento de Ciencias Agroforestales, Escuela Técnica Superior de Ingenierías Agrarias, Universidad de Valladolid, Campus La Yutera, Avenida de Madrid 44, 34004 Palencia, Spain

¹⁰ Canada Research Chair in Polar and Boreal Ecology and Centre D'Études Nordiques, Department of Biology, Université de Moncton, 18 Avenue Antonine-Maillet, Moncton, NB E1A 3E9, Canada

¹¹ Evolutionary Ecology Group, Department of Biology, University of Antwerp, Universiteitslain 1, 2610 Wilrijk, Belgium

¹² Arctic Centre, University of Lapland, P.O. Box 122, 96101 Rovaniemi, Finland

¹³ International Rice Research Institute, DAPO Box 7777, Metro Manila, Philippines

¹⁴ Natural Resources Institute, University of Greenwich, Chatham Marine, Kent ME4 4TB, UK

Introduction

Populations of small rodents have fascinated ecologists all over the world due to their extreme eruptive dynamics, or regular periodic fluctuations known as multiannual population cycles. Population cycles have fuelled decades of research since Charles Elton (1924, 1942), who described this phenomenon based on historical data in northwest Europe and Canada (Lindström et al. 2001; Myers 2018).

Many small rodent populations have erratic dynamics. However, voles and lemmings in the northern hemisphere, and particularly in Northern Europe, tend to have regular population fluctuations manifesting as cycles with a peak every 3–5 years (peak densities may attain 100–600 ind./ha, or 0.3–1.8 tons/km²). Elsewhere, small rodents can have larger outbreaks (1000–3000 ind./ha, or 1–5 tons/km²; Saunders 1986; Singleton et al. 2005, 2007; Leirs et al. 2010) with irregular intervals, usually, but not necessarily, exceeding 5 years (Singleton et al. 2007). Outbreaks occur both in the northern (Ostfeld et al. 1996; Jacob and Tkadlec 2010) and southern hemispheres, having major economic (Meerburg et al. 2009b; Singleton et al. 2010), conservation (Holland et al. 2015) and health impacts (Ostfeld et al. 1996; Meerburg et al. 2009a) both in developed and developing countries. In addition to the economic and health impacts of rodent outbreaks, population fluctuations in voles and lemmings are key for the functioning and structuring of boreal and arctic ecosystems (Ims and Fuglei 2005; Krebs 2011; Boonstra et al. 2016).

In this review, to improve our understanding of the mechanisms underlying the dynamics of populations, we compare small rodent cycles and outbreaks. There is a tradition in studies of population cycles to investigate the mechanisms driving the remarkably regular variation in density, which has resulted in a multitude of hypotheses explaining population dynamics (literature starting from Elton 1924, 1942, over Krebs 2013 and continuing). Ecologists studying outbreaks of small rodents have, however, often focused on the management of rodents due to their enormous impacts on humans through crop losses and disease transmission (Singleton et al. 2010).

The focus of the review is on population ecology. We have thus combined intellectual inputs from ecologists studying both population cycles and outbreaks in an attempt to achieve a synthesis. In our discussion, we highlight ten questions, the answers to which are essential for improving our perception of the various phases of the cycle or outbreaks. We do not provide a complete or specific list of open questions, but rather a selection of those major questions that require answers to better understand the generality of small rodent population dynamics.

Outbreaks and cycles

An overview

Population cycles have been well described as periodic multiannual density fluctuations characterized by delayed density dependence in population growth rates (Stenseth 1999). The periodicity may be statistically derived from e.g. simple autocorrelations of abundance in time series data (Begon et al. 1996), autoregressive models (Stenseth 1999), or spectral and wavelet analyses (Elmhagen et al. 2011) and nonlinear time series analyses (Hsieh et al. 2008). In addition to periodicity, population cycles are often characterised by their astonishing amplitude, i.e. the difference between the maximum and minimum densities. During cycles, rodent densities typically increase by 2–3 orders of magnitude from the low phase, often with < 1 ind./ha, to the peak. Furthermore, the four phases of a population cycle, i.e. increase, peak, crash and low phase (e.g. Krebs and Myers 1974), are accompanied by various distinct phase-dependent features (Fig. 1).

Rodent outbreaks are less strictly analysed statistically as they occur largely at irregular intervals (Fig. 1). Nonetheless, their magnitude in both agricultural and forest landscapes can be so impressive that they have been described in the literature as early as the time of Aristotle (384–322 BC; Jacob and Tkadlec 2010). Rodent outbreaks have had dramatic economic, ecological, societal, and even political ramifications (Singleton et al. 2010). In recent times, rodent population outbreaks triggered by bamboo flowering and fruiting have been closely associated with changes in governments because of their devastating effects on vulnerable human communities of upland habitats in Asia (Aplin and Lalsiamliana 2010). Economically, global annual losses caused by rodents are consistently reported to be around 10–15% when pre-harvest (Meerburg et al. 2009b) and post-harvest losses (Belmain et al. 2015) are combined. Occasional outbreaks of rodent populations in developing countries have important implications for food and economic security from local to regional scales (Singleton et al. 2010). In developed countries, consequences are less drastic, but given that high rodent density is often prevalent in specific regions and crops, the effect on businesses and supply chains can be dramatic (Jacob et al. 2014).

Defining a rodent outbreak is challenging because of the broad range of species and environments involved. Species that undergo outbreaks vary considerably in their population densities between non-outbreak and outbreak years. Long-term studies of house mice *Mus domesticus* indicate extremely low densities in most non-outbreak years (< 1 ind./ha), yet during outbreaks, population

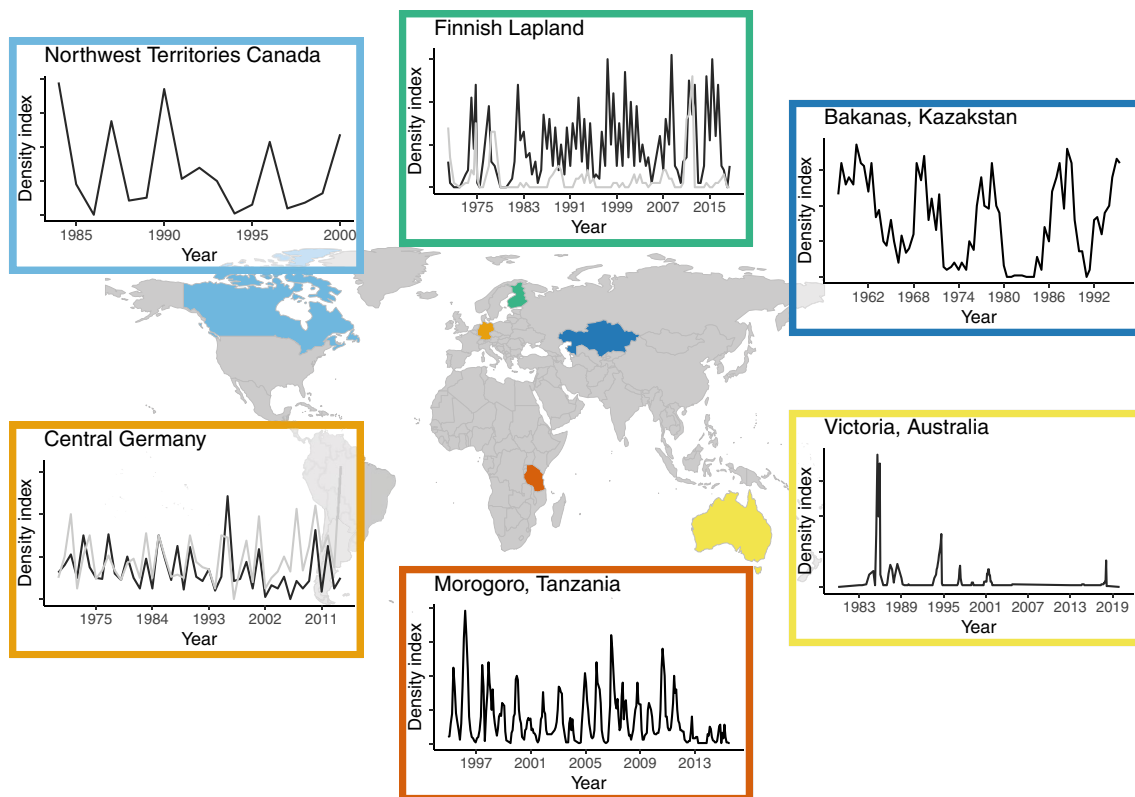


Fig. 1 Small rodent population dynamics examples from representative long-term time series in different regions of the world: collared lemmings *Dicrostonyx torquatus* and brown lemmings *Lemmus trimucronatus* from northern Canada (top left; data sent by C.J. Krebs; Krebs 2011), two common vole species the bank vole (*Myodes glareolus*)=black line, and the field vole (*Microtus agrestis*)=grey

line, from northern Finland (top centre) and Germany (below left), Great gerbils (*Rhombomys opimus*) in Kazakhstan (below right), Multi-mammate rat (*Mastomys natalensis*) in Tanzania, and house mouse (*Mus musculus*) in Australian grain-growing region. Discussion of the different population dynamics and references are found in the main text

densities can be more than 3 orders of magnitude higher (Singleton et al. 2005). Saunders (1986) reported densities of > 3500 ind./ha and this is likely to be the norm for hundreds of thousands of square kilometres of wheat fields in Australia during a mouse plague. By contrast, other outbreaking species have moderate densities in non-outbreak years, while an outbreak entails increases in population densities of only 1–2 orders of magnitude. For example, African multi-mammate mice in Tanzania typically have seasonal peaks of about 150 ind./ha (Fig. 1), whereas in outbreak years densities can be tenfold (Leirs et al. 2010). A review of the bio-economics of five agricultural rodent pest species drawn from four continents highlights these differences in baseline densities and consequent outbreak trajectories (Stenseth et al. 2003).

Interestingly, the population dynamics of the same rodent species can have regular cyclic dynamics in some parts of their distribution, and irregular outbreak dynamics in other parts. This is true for the arctic lemming species, which appear to have a mix of cyclic and irregular

outbreak dynamics within and between species (Ehrlich et al. 2020) and over time (Henden et al. 2009). Field and bank voles (*Microtus agrestis* and *Myodes glareolus*) tend to exhibit population cycles in Fennoscandia (Hansson and Henttonen 1985), but less regular outbreaks in Central European deciduous forests. The exceptionally high population densities of especially forest-dwelling bank voles are related to bottom-up regulation by weather-driven beech mast (Imholt et al. 2015 Fig. 1). Common vole populations *Microtus arvalis* in Central Europe have also been shown to alternate between cyclic and non-cyclic dynamics, likely due to changes in habitat structure and land use (e.g. van Wijngaarden 1957). Both cycles and outbreaks in these *Myodes* and *Microtus* species are spatially synchronous across large regions and at least some features of their fluctuations are similar. According to Lambin et al. (2006), there may be no fundamental causal differences between cycles and outbreaks in Northern and Southern Europe.

Phase dependent variation in population demography and behaviour

Phase dependent variation in the physiology and demography of cyclic vole and lemming populations has been well described. The most characteristic feature is the so-called Chitty effect, which involves vole body mass changes through a cycle with adults being 20–30% heavier in the peak phase than in the low-density phase (Chitty 1967; Boonstra 1994; Oli 1999, 2019; Sundell and Norrdahl 2002; Lambin et al. 2006). The smaller voles in the low phase tend to show delayed reproductive maturity. This phenomenon seems to be universal for cyclic vole populations. Animals are heaviest in the peak phase and produce the largest litters in the increase phase, while they are lightest and produce small litters in the decline and low phases. These demographic characteristics contribute to the asymmetric time series where both outbreaks and cycles show that the low phase may last up to several years, and the increased phase tends to be longer than the sudden crash and decline (Ginzburg and Inchausti 1997).

Chitty (1960) and later Boonstra (1994) proposed systematic changes in demographic population structure as the driving force of vole population cycles. Consequently, not only the quantity but also the quality of individuals may change during a cycle. Changes in the quality of individuals are likely to manifest as behavioural changes. Spacing is dramatically different at peak densities with more than 1000 ind./ha compared to the low phase with 1 ind./ha and less. During low density, it has been proposed that family groups in separated colonies may survive “by accident” and they would form the kernels to build up a local or area-wide increase again (Stenseth 1978; Glorvigen et al. 2013a, b). This well-documented phenomenon was even discussed as a possible driving force of population cycles (e.g. social fence hypothesis; Hestbeck 1982). The senescence hypothesis by Boonstra (1994) states that density-dependent social inhibition of breeding during the peak summer forces young to delay maturation until the next breeding season. Such density-dependent inhibition of maturation is quite common in territorial arvicoline rodents (e.g. Andreassen and Ims 2001).

Non-cyclic rodent outbreaks are predominantly driven by an elevation of reproductive rates some 6–9 months preceding a population outbreak. The conditions that trigger this atypical breeding pattern vary depending on the rodent species and the ecosystem. Nevertheless, species that have population outbreaks exceeding > 1000 ind./ha are typically characterised by an ability to extend their breeding season and/or to increase their production of young in response to climatic conditions and human agriculture that increase food supply. Such patterns have been reported in Australia (Singleton et al. 2001), Africa (Leirs et al. 1996), South America

(Lima et al. 2003), Asia (Htwe and Singleton 2014), Europe (Jacob et al. 2014) and New Zealand (Ruscoe and Pech 2010) across many species. Apart from the breeding patterns, there are few generalities associated with the density-dependent and independent factors that influence the growth rates of species with erratic outbreaks (Stenseth et al. 2003).

The seasonal structure of population dynamics

We refer to seasonality as the sequence of a breeding and a non-breeding season yearly. In high latitudes, seasons are defined by summer with vegetation growth and breeding of small rodents, and winter as a cold season with no, or only minor and exceptional, reproduction except for arctic lemmings where winter is the primary reproductive season. The length of the winter season varies with latitude and altitude with longer snow-covered periods polewards and upwards. Mediterranean climates in both the northern and southern hemispheres provide a comparable response, with usually more intense breeding of small rodents in spring and early summer, and low or absent breeding in the hot dry late summer and colder winter. In both cases, the non-breeding season is characterised by almost no photosynthesis, and thus practically no vegetation growth and no replenishment of food resources.

Stronger seasonality in high latitudes of the North shows that longer winters are associated with extended period lengths and larger amplitudes of the population cycles (Hansson and Henttonen 1985; Tkadlec and Stenseth 2001; Lambin et al. 2006; Taylor et al. 2013, but see Korpela et al. 2013). One piece of evidence for the importance of seasonality is the opposite geographical pattern in common vole fluctuations (Tkadlec and Stenseth 2001) as compared to the North–South gradient of Fennoscandian vole cycles (Hansson and Henttonen 1988). In northern Central Europe close to the Baltic Sea, common vole populations were more stable and increasingly cyclic towards southern Central Europe.

Also empirically-based modelling studies support the significance of seasonality as a determinant of the dynamics of cyclic populations (Bjørnstad et al. 1995; Stenseth et al. 2003; Kleiven et al. 2018). In arctic lemmings, the winters are key to reproduction while population densities often decline in summer (Ims and Fuglei 2005; Therrien et al. 2014). Due to the lack of reproduction during winter in voles, the strong, direct density dependence during winters necessarily involves winter survival. Seasonal and direct density-dependent mortality, together with direct and delayed density-dependent processes causing summer declines of populations, are necessary factors promoting multiannual cycles (Korpela et al. 2014). Examples are the population cycles of grey-sided voles *Myodes rufocanus* in Hokkaido, northern Japan (Batzli 1999; Stenseth et al. 2003), the cycle gradient of a whole vole community from

northern to southern Fennoscandia (Hansson and Henttonen 1988; Hörnfeldt 2004), and cycles of the bank vole *Myodes glareolus* (Tkadlec and Zejda 1998) and the common vole *Microtus arvalis* in Central Europe (Tkadlec and Stenseth 2001; Pinot et al. 2016). The underlying process in this seasonal variation may be connected to predation or a limited amount of food produced during the preceding summer. Indeed, several studies confirm the significance of food resources for winter survival (Ylönen and Viitala 1991; Schweiger and Boutin 1995; Eccard and Ylönen 2001; Huitu et al. 2003, 2007; Boonstra and Krebs 2006; Johnsen et al. 2017; Soininen et al. 2018, but see Yoccoz et al. 2001).

Besides the significance of food resources, other resources related to the winter habitat may emerge as limiting factors. Larger territories will give access to a multitude of resources, such as food, nest sites, and mates. Korslund and Steen (2006) found that survival of tundra voles *Microtus oeconomus* increased with the increasing availability of the subnivean space. Similar results have been found for collared lemmings *Dicrostonyx kilangmiutak* and brown lemmings *Lemmus trimucronatus*. In arctic regions where snow is a strong limiting factor in the population growth of lemmings, amongst others the density of winter nests increased with snow depth (Reid and Krebs 1996; Reid et al. 2012; Bilo-deau et al. 2013). Finally, Ylönen and Viitala (1985) found that bank voles aggregated in areas with brush vegetation before winter, which were also the areas with the thickest snow cover during winter. Winter aggregations benefit from a high level of social interactions (Ylönen and Viitala 1991), which promotes thermoregulation, i.e. heat and energy saving during mid-winter (Vickery and Millar 1984), and high reproduction at the onset of the breeding season in spring (Rémy et al. 2013; Andreassen et al. 2013; Radchuk et al. 2016). This may give rise to large growth rates in summer.

The picture of population fluctuations in non-seasonal environments in the tropics or in dry-temperate areas in the southern hemisphere is far fuzzier, as factors promoting resource availability and population growth are more stochastic (Leirs et al. 1997). Initiation of an outbreak seems to require the enhancement of food resources, which most often depends on e.g. rainfall and agricultural practices. In these environments, there are often distinct wet and dry seasons, which clearly determine the breeding seasons of rodents (Leirs et al. 1989; Massawe et al. 2011; Bâ et al. 2013). Unusually, wet periods or a prolonged rainy season result in longer or off-season breeding periods, with additional generations and therefore a multiplicative effect on abundance (Leirs et al. 1993).

However, extreme weather events with heavy rain and storms (Singleton et al. 2010) are not necessarily occurring regularly timed in the annual cycle. Thus, long-lasting droughts may maintain low population densities, while unpredictable rainfall periods boost irregular outbreaks of

small mammals, like the house mice in dry-temperate Australia (Singleton et al. 2010).

This kind of irregularity is typical to tropical rats and other rodent outbreaks following bamboo masts in Southeast Asia, but nevertheless, outbreaks may also occur as not related to specific climatic events (Aplin and Lalsiamliana 2010; Belmain et al. 2010). Such climatic uncoupling has also been reported in beech mast-driven outbreaks of Central European rodent species (Reil et al. 2015). If extreme weather events like cyclones are followed by rapid plant growth in natural habitats and asynchronous, non-seasonal planting of rice in managed agricultural habitats, rodent densities and following agricultural damage may escalate rapidly. Outbreaks may also be favoured by the high mortality of predators due to cyclone hazards, leading to lower predation pressure (Singleton et al. 2010), but this idea has not been fully documented yet.

To conclude, seasonal effects may essentially shift rodent dynamics from an intrinsically stable regime with irregular fluctuations (generated by density-independent mechanisms) to larger-amplitude and periodic cycles influenced by density-dependent mechanisms (Stenseth et al. 2003). Irregular outbreaks, on the other hand, seem to be primarily linked to stochastic weather events.

Phase dependent effects and related questions

We acknowledge a recent statement by Oli (2019) that “Solving the enigma of population cycles may necessitate identifying factors and processes that cause phase-dependent demographic changes and performing conclusive experiments to ascertain the mechanisms that generate multiannual density fluctuations”. Hence, in the following we discuss the mechanisms shaping population dynamics of voles and lemmings, for which four cycle phases, i.e. increase, peak, crash and low phase, can typically be identified. We will, however, also consider population outbreaks whenever this is feasible, and comparison may provide relevant insight.

The increase phase

The literature regarding small rodent population cycles mostly focuses on the crash phase and the ensuing low phase, and on the factors that may cause these (e.g. Boonstra et al. 1998). Surprisingly, much less effort has been devoted to studying processes of populations escaping regulation from low densities and transitioning into extended periods of increasing density (Hein and Jacob 2015).

The transition of a stable, low-density population into one with density independent population growth is facilitated by a shift in population demography, such that reproductive

rates and/or immigration become greater than mortality and/or emigration. Increasing population densities of small rodents in favourable environmental conditions and low intraspecific competition can be easily explained by the intrinsically high rates of sexual maturation and reproduction (Turchin and Ostfeld 1997). The challenge is, however, to identify the factors that define good environmental conditions which allow the increase. This is particularly relevant, as both the rates of increase and the duration of the increase phase vary substantially from one peak to the next, suggesting that also environmental conditions vary (see e.g. Boonstra et al. 1998).

Firstly, adequate food resources are a necessity for population growth. Food resource availability is, by and large, governed by abiotic conditions. In low and early increase phases, densities are often very low. Therefore, competition for high-quality food is likely to be negligible. At high latitudes, reproduction in cyclic small rodent populations commences at the onset of plant growing season in spring after several months of winter (e.g. Prévot-Julliard et al. 1999), except for the arctic lemmings mostly breeding under sub-niveal protection (e.g. Ims and Fuglei 2005). At lower latitudes, rainfall determines the condition of vegetation, and hence acts as a pivotal limiting factor for small rodent population growth. This is especially true for arid regions (see Bennison et al. 2018) and for semi-arid regions with seasonal rainfall (Tann et al. 1991; Leirs et al. 1994; Luque-Larena et al. 2013). In desert environments, patterns of precipitation are often highly unpredictable, and often affected by large-scale climatic anomalies such as the El Niño Southern Oscillation (Lima et al. 1999). Small rodent reproduction can also be strongly impacted by pulsed variation in food availability (so-called mass occurrences) in more productive areas, such as in the case of European beech *Fagus sylvatica* (Jensen 1982; Wolff 1996) or several bamboo species (Belmain et al. 2010; Htwe et al. 2010).

Secondly, small rodent population growth cannot be achieved in environments in which the mortality effects of predation override rates of reproduction. According to the specialist predator hypothesis (Andersson and Erlinge 1977), cyclic vole populations can sustain many predators during the peak and crash phases. However, after vole densities remain low for a sufficient time, predator numbers dwindle due to either starvation or emigration (Norrdahl and Korpimäki 2002), providing small rodents with enemy-free conditions in which to procreate. Such settings are typical for Northern Europe.

In temperate areas vertebrate communities are more complex, containing more of both alternative prey species and generalist predators that prey on them. The latter has been shown to have a stabilizing effect on vole population dynamics (Hansson and Henttonen 1985; Hanski et al. 1991), partly by a considerable shortening of the time

window with enemy-free conditions during which rodent population growth is expected to take off. In small mammals exhibiting irregular population outbreaks in arid regions, the periods between peaks are often too long for predator populations to subsist in moderate densities (Sinclair et al. 1990), thus restricting their impact to the proximity of the peak itself (Meserve et al. 2003). However, not all species behave in the same way: Lima et al. (2003) showed that in the leaf-eared mouse (*Phyllotis darwini*) in Chile, population growth rate throughout the year is dependent on survival (for which predation is thought to be important), while for the multi-mammate mouse (*Mastomys natalensis*) in Tanzania, changes in reproductive output are much more important for population growth.

Thirdly, the intrinsic behavioural and social processes operating within populations of both cyclic and eruptive species vary considerably during different phases of their dynamics. Several of these processes may be beneficial during increasing population densities. For example, the increase phase is initiated by the demes of animals distributed in high-quality patches of the landscape (Sundell et al. 2012). Resource patchiness may promote social behaviour in females and enhance their reproductive success compared to solitary territorial females (Ylönen et al. 1988; Ylönen and Viitala 1991; Lambin and Yoccoz 1998; Sutherland et al. 2005; Rémy 2011). The benefits may manifest through communal breeding and thermoregulation, particularly during winter (Hayes 2000; Gilbert et al. 2010), and shared protection against infanticide (Wolff 1993; Ylönen et al. 1997). The early phases of the increase will be associated with dispersal and rapid colonisation of vacant habitat patches (Glorvigen et al. 2013a, b), as dispersal is inversely density-dependent in voles (Andreassen and Ims 2001). The correlation between amicable social behaviour and population growth rates have been described for several species of rodents, such as house mouse (*Mus* spp.; Krebs et al. 1995; Sutherland et al. 2005), yellow-necked field mouse (*Apodemus flavicollis*; Bogdziewicz et al. 2016), and *Myodes* and *Microtus* voles (Ylönen et al. 1990; Andreassen et al. 2013 and references therein). These species inhabit various biomes in the world and vary in population dynamics from occasional outbreaks to population cycles.

In conclusion, it seems to be obvious that small rodent population increases are associated with abundant food resources, enemy-free conditions, and certain types of social behaviour. However, there are details regarding the increase phase that is currently poorly understood, which can be broadly summarized into the essential question related to the increase phase:

1. *What factors determine the rate and the timing at which rodent populations increase, and what defines the length of the increase phase?*

The rate of population growth, assuming closed populations and minimal mortality, is a function of reproductive output. Small herbivorous mammals subsist primarily on a relatively poor quality diet, particularly regarding the intake of nitrogenous compounds, and especially essential amino acids (Mattson 1980) that are crucial for maintenance and reproduction. Certain amino acids are a limiting factor for per capita reproductive output in cotton rats *Sigmodon hispidus* (Webb et al. 2005). This indicates that diet quality may well affect population growth rates of both cyclic and eruptive species during the increase phase. However, this association has received virtually no research attention, let alone how diet quality varies in response to the weather. In arid areas, the quantity of food clearly influences the population growth rates of small mammals. Such an association may also affect cyclic small mammal populations in more predictable growing regimes, e.g. in Northern Europe, where dry and hot summers often appear to inhibit vole population growth.

The quantity and quality of food resources are likely to have major effects also on the duration of population increase. In general, multivoltine small mammals with several litters in one—and often the only—breeding season of their lifetime, require long growing seasons or need to breed in several consecutive summers (Prévot-Julliard et al. 1999), to reach the absolute carrying capacity of the population. As a seasonal effect, it is obvious that environments that exhibit long winters also have a short growing season.

Furthermore, rodents depend heavily on intestinal microbes for the digestion of their bulky and cellulose-rich food (Ley et al. 2008). The composition of the rodent intestinal microbiota is greatly affected not only by their diet (Kohl et al. 2014), but also by pathogens and parasites (Guarner and Malagelada 2003), and this, in turn, may reflect upon the immune system (Guarner and Malagelada 2003). The role of such changes in the intestinal microbiota on phase-related changes in rodent demography has, to our knowledge, never been investigated until the work of Li et al. (2019).

The peak phase

Population peaks largely determine the attained density amplitude of the population. They are reached when mortality first equals then exceeds reproduction, to prevent a further increase in density. Immigration and emigration are supposed to be in balance during the peak phase, which is a reasonable assumption as small rodent fluctuations are commonly spatially synchronous over vast areas (e.g. Sundell et al. 2004).

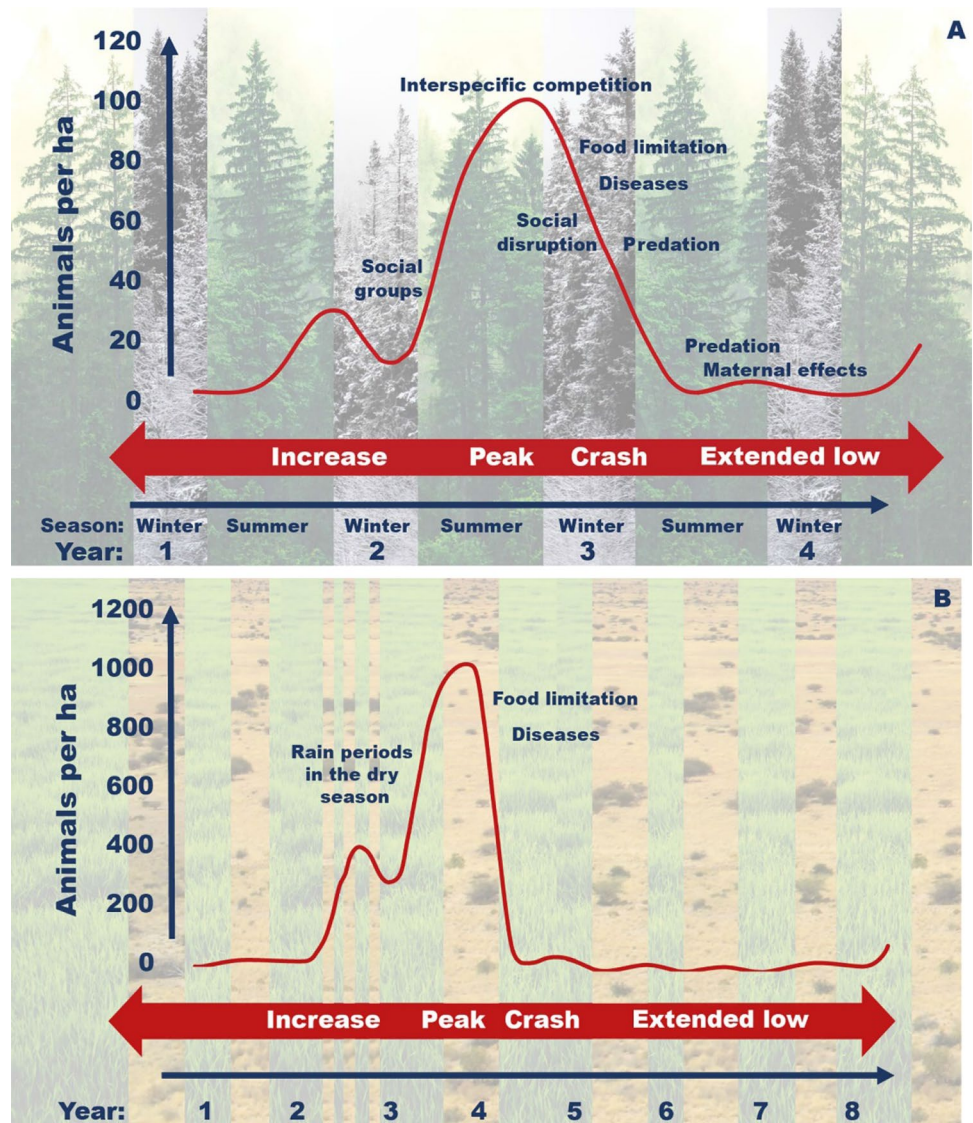
Peak densities typically vary substantially from one cyclic peak or outbreak to the next, also for the same population in the same area (Fig. 1). Variation in the limiting factors is associated with changes in the carrying capacity of the

environment, as determined by either abiotic conditions (e.g. weather or habitat availability), or biotic factors such as food resources or predation. Variation in weather may affect primary production and biomass accumulation, which in turn affects the amount of available food resources or the extent of foraging and breeding habitats. For example, a warm and dry summer may greatly limit the growth of rodent food plants, resulting in a low amount of accumulated food resources with which to overwinter (Korpela et al. 2013) (Fig. 2).

Most of the factors proposed to cause cyclic dynamics in small rodents can also influence peak density levels and even cause cessation of population growth. These include competition, predation, reduced food availability and quality, pathogens and parasites, stress, and quality of individuals, as well as social factors such as infanticide (e.g. Stenseth and Ims 1993; Oli 2019). These factors potentially limit population growth, but they do not necessarily regulate populations, i.e. they do not cause the cyclic dynamics per se. This problem may be exemplified by the multiannual fluctuations of northern voles, which are thought to be mainly caused by delayed density-dependent factors such as predation by specialist predators (e.g. Korpimäki and Norrdahi 1998; Hanski et al. 2001; Korpimäki et al. 2002). However, even the classic predator–prey models inherently require some direct density-dependent process to slow the prey’s population growth, so that predators with their much lower reproductive potential can “catch” the prey population and cause the subsequent crash (e.g. Hanski et al. 2001). Yet, it is important to note that, in seasonal environments, the predator functional response alone can generate direct dependence even when predator species express various functional responses (e.g. Gilg et al. 2003). Huitu et al. (2003) identified winter food resources as such as a direct density-dependent limiting factor in a two-factor experiment manipulating both predation and winter food supply. The great gerbil *Rhombomys opimus* in the Central-Asian steppe in Kazakhstan exhibits cyclic population fluctuations that are linked with the flea burden on these rodents and epizootics of *Yersinia pestis* plague (Reijniers et al. 2014). Meanwhile, Kausrud et al. (2007) showed that climate forcing synchronizes the dynamics of these gerbils over large geographical areas. In ecological population models, many of these factors can co-occur, and their relative strength is almost impossible to gauge or even parameterise. Hence, this “untouchable clump of factors” is often incorporated as a black-box in the models (Stenseth 1999).

There are many additional direct density-dependent factors that may contribute to population fluctuation patterns. These may be related to predation, for example, selective predation on the reproductive part of the prey population (Cushing 1985), changes in the predator spectrum due to shifts in prey activity patterns (Halle and Lehmann 1987;

Fig. 2 Characteristics of vole population cycles in the northern hemisphere (a) and mice outbreaks in the southern hemisphere (b). Seasonality connected to reproductive and non-reproductive periods. Winter is the non-reproductive season in the northern hemisphere and the dry season in the south



Halle 1993), indirect predation effects (Ylönen 1994; Ylönen and Ronkainen 1994; Sheriff et al. 2009), fast functional response of the generalist predators (Hanski et al. 1991), and fast numerical response of nomadic avian predators (Sundell et al. 2004). Little is known about the many potential interactions of the multiple factors, as this kind of network is hard to control in experimental studies. Food and predation/parasite—interactions are the most studied of such interactive effects (e.g. Pedersen and Greives 2008; Haapakoski et al. 2012; Forbes et al. 2015), but other or multifactorial interactions are hardly touched.

The shape and magnitude of the peak phase of population cycles vary considerably between species (Turchin et al. 2000; Turchin and Batzli 2001), for example between the sympatric northern species *Myodes rufocanus* and *Lemmus lemmus* (Ims et al. 2011). *Myodes* populations, as many vole species in general, have cycles with blunt, often two-year

peaks (Ylönen 1988) compared to *Lemmus* populations that have more angular, saw-toothed cycles with higher maximum densities (Turchin et al. 2000; Ehrich et al. 2020). These differences are suggested to be due either to different causal trophic interactions (predator–prey in *Myodes* and plant–herbivore in *Lemmus*; Turchin et al. 2000), or to winter breeding (most prevalent in *Lemmus*; Ims et al. 2011). Andreassen et al. (2013) suggested that different social organisations between the species or genera might be linked to the shape of cycles, with sharp, high-amplitude cycles being typical for species with male territoriality and female sociality. Thus, *Microtus* species tend to have sharper cycles than *Myodes* species, where the social system is characterised by female territoriality (Kalela 1957; Viitala 1977; Ylönen 1988). The social system of lemmings is more flexible and may rather depend on territorial males (Heske and Jensen 1993). Moreover, the extreme shifts in dispersal

and social behaviour observed in *Lemmus* (specifically in *L. lemmus*; Stenseth and Ims 1993) fit well to the suggestion that the shape of the cycle may be linked to behaviour and social organisation.

The absolute height of the peak in animal numbers is determined to a large extent by food resources. As an example, the numbers of house mice in Australia, breeding in grain fields, reach even thousand(s) of individuals per hectare during outbreaks (Singleton et al. 2005). In Europe, the herbivorous *Microtus* voles inhabiting agricultural landscapes reach two- to three-fold higher densities than the granivorous *Myodes* voles (Henttonen 2000). Exceptionally good food supply may promote disruption of the social system and territorial behaviour, which normally controls the numbers of breeding females as observed by Ylönen et al. (1988).

To compile this section, a rather simple essential question arises in connection with the peak phase:

2. What are the factors that determine the height of the density peak, and how do they interact?

A thorough understanding of the continuous variation in density amplitude for each cyclic or eruptive population in any geographical region and habitat productivity could bring new insights into population dynamics. More specifically, it is important to recognize those direct density-dependent factors that hinder population growth near the peak densities. An additional question is whether the social structure of peak density vole populations remains the same as in increasing populations, or whether some kind of change or disruption of the social structure occurs, which would enable more females to breed in a stressing high-density environment. This kind of loss of social control in breeding during very high densities was observed by Eccard et al. (2011).

The crash phase

The decline of the population after a peak or outbreak is often abrupt and dramatic, and therefore it is called a crash. The crash phase has received the most attention in the literature and it is indeed critical for the understanding of small rodent population dynamics (Tkadlec and Zejda 1998). In cyclic small rodent populations, the crash often starts in late summer or fall and extends into winter and the following breeding season (Krebs and Myers 1974; Hansson and Henttonen 1988; Huitu et al. 2003; Pinot et al. 2016; Johnsen et al. 2017). In many cyclic populations, the initial autumn/winter crash is followed by summer declines strongly affected by specialist predation (Henttonen et al. 1987; Hanski et al. 1991). However, summer declines during the population crash are also observed in cyclic populations of the field vole in Kielder Forest in UK (Lambin

et al. 2000), where virtually no strictly specialist predators are present, and in other non-cyclic rodent populations in Central Europe (Giraudoux et al. 2019).

The crash itself also has most often been connected to specialist predators, especially to small mustelids that can enter the holes and cavities of small mammals, their nests and the subnivean space in winter (Norrdahl and Korpimäki 1995; Boonstra et al. 2016; Ylönen et al. 2019). The predator hypothesis is supported by mathematical models (e.g. Hanski et al. 2001) as well as by experimental studies (Korpimäki 1993; Klemola et al. 1997; Korpimäki and Norrdahl 1998). Although no one denies that (specialist) predators contribute greatly to the crash of small rodent populations, some authors have combined predation, or other extrinsic factors, with intrinsic factors as potential enforcers of the decline. For instance, Andreassen et al. (2013) suggest that predation disrupts the social system, followed by intraspecifically induced mortality such as infanticide (see e.g. Ylönen et al. 1997; Andreassen and Gundersen 2006; Opperbeck et al. 2012). The problem with this framework is, however, that it considers a typical scenario for a crash during the breeding season with strong social interactions between territorially breeding animals (e.g. Ylönen et al. 1990). Nevertheless, in most crashes, the steepest decline in numbers is observed during the winter when the territorial behaviour of voles is expected to be relaxed and animals rather aggregate for thermoregulation (e.g. Ylönen and Viitala 1985, 1991; Sipari et al. 2016). Whether the mortality rate throughout winter is constant is yet to be assessed since most studies do not measure population changes throughout the winter but compare before and after winter numbers.

Intraspecific competition during winter for food resources has repeatedly been suggested as a factor limiting the growth of vole populations at peak phases. Obviously, as food resources are not being renewed during the winter, food depletion and deterioration of its quality can easily be regarded as a contributing factor also to the crash phase, as suggested by Boonstra and Krebs (2006) for red-backed voles *Myodes rutilus*. Several experimental studies also show that supplemental feeding during winter can create high autumn densities in local patches in red-backed voles (Schweiger and Boutin 1995), advance breeding of bank voles *Myodes glareolus* in spring (Eccard and Ylönen 2001; Ylönen and Eccard 2004), and reduce territorial behaviour in bank voles (Ylönen and Viitala 1991). It may even prevent winter crashes of bank voles (Johnsen et al. 2017) and, when supplementary feeding was combined with the elimination of predation, in the field vole *Microtus agrestis* (Huitu et al. 2003).

In support of winter food limitation, Huitu et al. (2007) found evidence for deterioration in the physiological condition of field voles in the winter of the decline phase compared to the winter of the increase phase. The poor

condition of these voles may expose them to diseases, parasites and/or predators, leading to a feedback loop of increasing mortality (Beldomenico et al. 2008). Intraspecific competition for food resources may also explain why larger activity ranges are beneficial for survival during winter (Johnsen et al. 2018).

Related to this is the effect of the larger animals in peak years as described by the Chitty effect (see above; Chitty 1967). It has been shown that small rodents have a physiological optimal winter body mass that is species-specific (Iverson and Turner 1974; Wiger 1979; Aars and Ims 2002). The characteristic of larger animals during the peak may be age-related, as younger cohorts have been inhibited from maturation to the adult subdivision of the population (Andreassen and Ims 2001). The large peak animals may struggle to survive the winter because they are physiologically “too big” and energetically sub-optimal for the limited food resources. This may, together with social intolerance in males, be one reason why the survival of males is generally lower over winter as compared to females (e.g. Klemme et al. 2008; Haapakoski et al. 2012; Sipari et al. 2016).

Depletion of food resources or some specific food items needed in only small amounts (Aulak 1973; Andreassen and Bondrup-Nielsen 1991) may also explain the continuing decline into the following summer, although this has been refuted experimentally by Klemola et al. (2000b). Furthermore, the challenge with the food hypothesis is, however, to understand how this can affect the whole small rodent community consisting of species with markedly different diet requirements, like seeds in *Myodes*, graminoids in *Microtus* and mosses in *Lemmus* (Hansson and Henttonen 1985); but see (Soininen et al. 2017b).

Limited food resources may also interact with predation and/or pathogens and diseases to further reduce population numbers (Huitu et al. 2003). Studies focusing on the mortality causes in cyclic vole populations support the strong effect of predation, as Steen (1995) observed in cyclic tundra voles *Microtus oeconomus*, and Norrdahl and Korpimäki (1998) for radio-collared *Microtus* voles. In studies where predation rates were precisely estimated, the population growth of arctic lemmings in summer was limited by predation pressure, e.g. by predatory birds (Therrien et al. 2014). Nevertheless, during the crash phase, predators are likely to act compensatively, i.e., kill starving or diseased individuals that would die anyway. Relatively few animals are found dead during a crash except for Norwegian lemming *Lemmus lemmus* where surplus killing can translate into many carcasses (Steen et al. 1997); for voles, however, with crashes mostly occurring during winter, scavenging by many predators can be a simple reason behind the absence of dead animals found in spring. So, the essential question related to the crash phase can be framed as:

3. How does the population demographic structure affect the crash phase?

The population crashes of eruptive species in the southern hemisphere are more rapid and impressive than the decline in vole and lemming populations. House mouse populations literally crash synchronously within weeks over thousands of square kilometres (occasionally as fast as 90% reduction of animals within a week; Singleton et al. 2007), including around grain stores where there is still ample food.

Changes in spacing behaviour of house mice during the development of high population densities and during the rapid population crash in wheat fields in Australia indicate that they are highly territorial during the breeding season of an increase phase. These changes in spacing behaviour also signal that there is a complete breakdown of social and anti-predatory control mechanisms once populations are high and during the rapid decline in population numbers (Chambers et al. 2000; Ylönen et al. 2002; Jacob et al. 2004; Sutherland and Singleton 2006). This resembles the breakdown of social breeding control in the bank vole during high densities of mature females (Ylönen 1988; Eccard et al. 2011) and may indicate that population growth to very high densities is a combined effect of resource availability and changes in population social structure. Following a crash, eruptive species like house mice may be under pressure by a combination of caloric and disease stress (Singleton et al. 2007), and finally doomed by predation on sick and weak individuals.

Although the scientific literature and experimentation regarding both cyclic and eruptive small rodent populations have focused on the crash phase, we have still not reached a consensus on conclusive explanatory factors. The Chitty effect characterising individuals in peak phases has received little attention for decades, and we know even less about changes in the population demographic structures in the more eruptive tropical populations. In the latter populations, however, the increase is often very fast as well, in immediate response to stochastic climatic events, and both increase and crash often happen within the same year, not allowing for a shift in demography. Population demography and the structure in the population (e.g. sex ratio, age structure and body mass) shift through the population cycles. It is about time to solve eventual mechanisms for the effect of population demography structure during the crash phase, for instance through physiological constraints in body mass, or senescence (Boonstra 1994).

The low phase

A feature as remarkable as the density peaks in the cyclic population is that densities do not start to grow immediately after a crash despite ample food resources and low intraspecific competition. This so-called extended low phase has

initiated much research on population dynamics. For populations to stay stable at low densities over a longer period, mortality and reproduction, as well as immigration and emigration, should be in balance. Hence, since immigration and emigration are primarily considered to compensate for local density disparities (see above), there has to be a factor that lowers reproduction and/or increases mortality, preventing the population from increasing.

In cyclic populations, the low phase may last 2–3 years before the populations start to increase again (Boonstra et al. 1998). The same phenomenon is observed in eruptive populations that have unpredictably long low phases (most often 5–10 years; Singleton et al. 2007). We need, however, to distinguish between rodent outbreaks in arid areas like Australia vs. temperate Europe where low phases may also be long, but not necessarily so (Jacob and Tkadlec 2010). Multi-mammate mice revert to “normal” seasonal fluctuations after the end of an outbreak and that condition may then last for up to several years until a new outbreak is triggered (Leirs et al. 1996).

Food availability was rejected as an explanation for the extended low phase by Boonstra et al. (1998); and experiments have not found delayed effects of food availability on population growth (Turchin and Batzli 2001). Food becomes a limiting factor only at higher densities (Huitu et al. 2003), and previous overgrazing does not prevent vole populations from increasing (Klemola et al. 2000b). Several food plants of cyclic voles induce phytochemical defences in response to intensive vole grazing (Massey and Hartley 2006; Reynolds et al. 2012; Huitu et al. 2014), and some of these responses are delayed. However, no evidence exists for any universal induced defence substance, applicable across cyclic small rodent taxa (Soininen et al. 2017a).

The lack of universality also applies to rodent pathogens. Although a growing number of studies are reporting significant negative effects of pathogens on the survival of its host (e.g. Soveri et al. 2000; Kallio et al. 2007; Burthe et al. 2008), no pathogen can be common and widespread enough to be responsible for the delay in host population growth at low densities. Pathogen prevalence is generally highest when their hosts reach large densities (e.g. Singleton et al. 1993, 2000), but whether density alone or a combined effect with the cycle phase drives pathogen prevalence remains unsolved. A recent study using cyclic populations by Forbes et al. (2014) identified delayed density-dependent patterns of orthopoxvirus (likely cowpox) prevalence in field voles in Finland, implying that this pathogen may contribute to the low phase of the cycle.

For cyclic populations, Boonstra et al. (1998) concluded that predation and maternal effects are the most likely explanations for the extended low phase. A delayed numerical response of the predators continues to inflict mortality on the population in the low-density phase. A density increase

of the prey is impossible until the predation pressure subsides (Henttonen 1985; Korpimäki 1986; Sonerud 1988), which happens when predator numbers are reduced due to mortality, cessation of reproduction and emigration, or if the predators switch to other prey species.

Reduction or removal of predators in the low phase should shorten its duration. Predator removal experiments have been conducted, but they have seldom covered the period between decline and increase of prey populations. One comprehensive experiment exists (Korpimäki et al. 2002) which showed clear effects of predator removal on the abundance of voles in all studied cycle phases, albeit without a marked impact on the length of the low phase. The reason for this might have been that the reduction of all vole predators was conducted only during the breeding season. In two studies (Klemola et al. 2000a; Huitu et al. 2003), all vole predators were excluded from fenced areas during the low phase, with a similar result—fenced populations increased while unfenced control populations remained at a low level.

Several attempts have been made to employ predators as biocontrol agents, e.g. to prevent crop damage associated with outbreaks (e.g. Mahlaba et al. 2017). These attempts often generate high predator densities, but generally fail to keep rodent numbers down. However, most of these rodent populations were not cyclic. Apart from Duckett (1991) and Kay et al. (1994), there is no convincing empirical field data to suggest that promoting the presence of avian predators (by nest boxes and perches) leads to lower rodent abundance or reduced damage to crops (Labuschagne et al. 2016).

Predation may also have indirect, delayed effects on voles through maternal effects, involving e.g. stress. This is likely to affect in particular individuals of the low phase of cycles, as has recently been shown for snowshoe hares *Lepus americanus* (Sheriff et al. 2009; Krebs et al. 2018). Furthermore, it is important to note that some 10 years ago classical Mendelian heritability of individual traits was assumed a prerequisite for intrinsic effects to be relevant for population regulation. The recent advent of epigenetics has dramatically changed this view (e.g. Bossdorf et al. 2008).

We largely share the views presented by Boonstra et al. (1998) over two decades ago, and conclude that the extended low phase of cyclic small mammal populations is indeed most likely caused partly by extrinsic predation, but partly also by delayed intrinsic, inter-generational effects of predation pressure that modify the quality of individuals living at low densities. Future studies should aim to determine the relative importance of delayed effects of predation, and other density-induced stressors such as social and nutritional stress, through direct and indirect pathways on the demography of small rodent populations. As the evidence on inter-generational effects of early-life environment on survival and reproductive success is accumulating also from voles (Bian et al. 2015, van Cann et al. 2019a, b), more emphasis

should be placed on quantifying the phenotypic and (epi-) genetic characteristics of individuals in different phases of the population cycle.

Hence, an essential question for future research on the low phase is:

4. *Why do populations not begin to grow immediately after a crash, and are pathogens or maternal effects relevant ingredients for the extended low phase of cyclic populations?*

For populations with eruptive dynamics, the periods between outbreaks likely represent a normal, more or less stable state of populations, in which densities are not particularly low, compared to most cyclic populations in the North.

Small rodent populations in a changing world

The world is changing rapidly, also for small rodent populations. Besides the obvious changes of global warming and the increased occurrence of extreme weather events, land-use change is another important factor that could influence the dynamics, health and resilience of small mammal populations. Below, we discuss some related aspects that potentially are important future research issues for ecologists of small rodent population dynamics.

Climate change

In eruptive populations of the southern hemisphere and temperate Europe, rodent population increases to abnormally high densities are often associated with stochastic climate events or irregular resource changes. In Tanzania, unusually abundant rainfall early in the wet season triggers early reproductive maturation in multi-mammate mice *Mastomys natalensis*. This produces an additional generation within a year, resulting in a tenfold production of young and outbreak densities (Leirs et al. 1993). In Southeast Asia from 1996 to 1999, unusual rainfall patterns led to asynchronous planting of rice crops, followed by rodent population outbreaks each year (Huan et al. 2010). Similarly, the high degree of asynchronous planting of new rice crops over a large area in Myanmar after the cyclone Nargis in 2008 has been suggested to be the most likely contributing factor to the massive population outbreak of *Bandicota* species some 15–18 months later, in areas where outbreaks had never been experienced before (Htwe et al. 2013).

In Central Europe, beech mast triggers bank vole population outbreaks in the following year (Tersago et al. 2009; Reil et al. 2015). The weather conditions favourable for

beech mast are likely to occur at higher frequencies in the future due to climate warming. In New Zealand, mouse populations erupt during a beech mast and it has been reported that the magnitude of change in mean summer temperature between consecutive years can predict mast events. Therefore, the frequency of outbreaks of mouse populations in New Zealand forests, and perhaps also of bank voles in beech forests in Europe, may rise with increased variance predicted in climatic events (Imholt et al. 2015; Holland et al. 2015).

There are two major scenarios of how small mammals in the North are affected by climate change. Enhancement in habitat productivity due to warming and increased precipitation may result in agricultural intensification and related land-use changes (cf. Cornulier et al. 2013; see below). On the other hand, winters are predicted to become more unstable and the duration of permanent snow cover shorter, which affects the life of ground-dwelling small mammals and food webs in many ways (Penczykowski et al. 2017). Currently, approximately one-third of the world's land surface is covered by snow during winter (Lemke et al. 2007). Snow cover provides thermoregulatory advantages in the insulated sub-nivean space, shelter for nest sites, and physical and visual refuge from predators. Hence, shorter periods with snow cover are most likely to affect winter survival of voles and lemmings negatively.

Predation by specialist predators, especially the least weasel *Mustela nivalis* and the stoat *Mustela erminea*, is suggested to be a key factor promoting the population crash and causing extended low phases (see above). Both species belong to the group of vertebrates in the North changing from dark or brownish summer pelage to a white winter coat. Late and unpredictable onset of snow cover and its earlier melting could increase the vulnerability of individuals with a mismatched white coat colour due to intra-guild predation by larger mammalian predators and resident owls. This, in turn, may have dramatic effects on vole dynamics (Ylönen et al. 2019) and further cascading trophic effects at the ecosystem level (Terraube et al. 2015).

Empirical studies on the interaction between climate and predation are scarce. There are two northern-boreal examples of severe changes in vole dynamics, the temporal disappearance and return of vole cycles together with weasel disappearance in Finnish Lapland (Fig. 1, Henttonen et al. 1987, Magnusson et al. 2015), and the low densities of grey-sided voles *Myodes rufocanus* and field voles *M. agrestis* in Sweden (Hörnfeldt 2004; Hörnfeldt et al. 2005). Dampening of the Swedish grey-sided vole cycle is more clearly attributed to changes in forest landscape structure (Hörnfeldt 2004; Ecke et al. 2006; Magnusson et al. 2013, 2015), while dampening of the cycles of the field vole along with their recent recovery, are more likely related to a climatic driver (Magnusson et al. 2015). In contrast, the disappearance and

subsequent return of vole cycles in Finnish Lapland seem to be due to a more complex network of changing seasonality and predator–prey interactions in a whole rodent community (Henttonen 2000; Ylönen et al. 2019). Several arctic lemming populations showed perhaps the most compelling examples of collapsing cycles in recent years (Ims et al. 2008), e.g. in North-Eastern Greenland (Schmidt et al. 2012). It is possible that several observed collapses are actually transitions to non-stationary population dynamics as detected by analysing hundred-year long time series (e.g. Henden et al. 2009). Such transitions between stationary and non-stationary can be triggered by several factors, such as non-linear trophic dynamics (Hastings et al. 2018; Clark and Luis 2020; Blasius et al. 2020).

The examples above show how global warming and more variation in extreme weather may change the dynamics of small rodent populations. In the northern hemisphere, a warmer climate may improve habitat quality, while a drier, and more unfavourable climate is expected in the southern hemisphere. How this will affect population dynamics is not obvious. One possibility is that with a warming climate, northern populations would begin to exhibit similar types of erratic outbreak dynamics as currently observed in southern populations. For the South, we already know that rainfall is one of the most important determinants of outbreaks today because it increases primary productivity and food availability, as exemplified for instance by the *Mastomys* rats in Africa (Leirs et al. 1996). As a response to a drier climate, outbreaks may occur more rarely in the southern hemisphere. Yet, those outbreaks may be more dramatic than before, since a long dry spell of several years, broken by an unexpected wet period, may result in uncontrolled growth of the rodent population; all supported by abundant vegetation growth due to the build-up of a rich seed bank and soil nutrients and the absence of predators as suggested by Fiedler (1988).

The above assumptions are reasonable but speculative, since they are projections into possible future complex developments while evidence is missing up to now. An essential question related to global climate changes to follow up is, therefore:

5. How will climate and land-use change affect small rodent dynamics in both cyclic and eruptive populations?

The most regularly cyclic populations are found in the northern hemisphere, while outbreaks are more typical from Central Europe to the tropics and Australia. However, there are examples from temperate or arid Europe on eruptive types of fluctuations, resembling a hybrid between cycles and outbreaks (Luque-Larena et al. 2013; Reil et al. 2015). Whether this is a result of cyclic population dynamics

eventually turning into more eruptive dynamics, possibly induced by climate change, is plausible but remains to be verified. However, not all rodent species respond in the same way or at a similar pace to climate change (e.g. Gilg et al. 2009). Furthermore, changes in temperature affect other climatic components such as precipitation differently in different parts of the globe, which affects the intervals and intensity of outbreaks. It is therefore too early to cast global predictions regarding the potential effects of climate change on small rodent dynamics.

Of note, climate change is also a major driver of changes in rodent-borne disease patterns (Kausrud et al. 2010; Voutilainen et al. 2012; Altizer et al. 2013; Khalil et al. 2014). Increased trafficking and human encroachment into wildlife habitats will probably accelerate the spread of parasites around the world, also increasing the incidence of rodent-borne zoonotic outbreaks.

Land-use change may influence the presence and absence of small mammal species, or influence their temporal and spatial dynamics directly or indirectly. Populations of *Microtus agrestis* in the UK, in Sweden and in Finland are cyclic. In forested areas, the successional stage affects the dynamics of small mammals and especially that of *Microtus* voles, which largely disappear where grassy clear-cut areas become unsuitable habitats when afforested (Savola et al. 2013). In Sweden, the cyclicality of *Myodes* voles remained despite natural succession or land-use change from e.g. old-growth forest to clear-cuts (Ecke et al. 2002). In Finland, a high degree of agricultural landscape fragmentation is associated with increased spatial variation in *Microtus* population growth rates, as compared to unfragmented agricultural landscapes (Huitu et al. 2004). Cyclic dynamics of common vole *Microtus arvalis* populations emerged overtime on expanding meadows in reclaimed areas in The Netherlands (van Wijngaarden 1957). All these observations imply that land-use change is capable of influencing small rodent population dynamics.

Land cover changes in combination with precipitation may well be an important predictor of rodent outbreaks in agricultural systems (Stenseth et al. 2003). Also, clear-cutting has been reported as an important driver of outbreaks in deer mice *Peromyscus maniculatus* in Canada (Sullivan and Krebs 1981). Land cover changes, the spatial structure of landscape elements, the quantity and quality of food, and general habitat availability may all promote population outbreaks, but the causality and relevance of these factors still need further research.

Nevertheless, a prominent effect of land-use change seems to be the increase in agricultural or grassland areas. This effect on landscape structure may permanently induce chronic high vole densities and outbreaks (Delattre et al. 1996; Fichet-Calvet et al. 2008), as has been observed for many species all over the world. For instance, land cover

change from cropped fields to interconnected hay meadows facilitated population outbreaks of water voles *Arvicola amphibius* (Halliez et al. 2015). Agricultural irrigation increased the area of grassy crops, resulting in invasions and following eruptive dynamics of common voles *Microtus arvalis* in Spain (Luque-Larena et al. 2013). In Mongolia, outbreaks of Brandt's vole *Microtus brandti* occurred more frequently due to increases in livestock populations (Zhang et al. 2003).

In Southeast Asia, an important factor for outbreaks of rodents in agricultural landscapes, dominated by rice, is the intensity and timing of land use. In Vietnam, the rice field rat *Rattus argentiventer* causes chronic problems, but their population dynamics have changed markedly when the agricultural management shifted from two to three rice crops per year in the Mekong delta. Breeding of the rice field rat is synchronized with the pre-booting stage of rice, with more crops per year resulting in more breeding seasons (Lam 1983; Brown et al. 2005). This effect is further exacerbated if there are conditions that lead to higher asynchrony of cropping (Brown et al. 2011).

Land-use change can occur over large spatial scales (e.g. clear-cutting of boreal forest, the succession of arable land after the collapse of the Soviet Union, forest fires in North America), but they are not temporally synchronized and hardly recur with a specific time interval. Rather than inducing cyclicity *per se*, changes in land use and landscape structure may create conditions suitable for cyclic population dynamics, e.g. through changes in trophic interactions. Hence, the study of land-use change may give new insight into the dynamics of small rodent populations. In particular, the repeated observation that the prevalence of outbreaks generally increases due to more homogeneous land cover on large spatial scales may be of interest, especially for rodents that are well adapted to these modified habitats. An essential question related to land-use changes is:

6. *What are the possible pathways of how changes in land use and landscape structure affect small mammal population dynamics?*

Community processes, conclusions and further questions

The fundamental basis for understanding small rodent population dynamics lies in its inherent annual density variation—a peak in the late breeding season, and low numbers at the end of the non-breeding season. The demographic machinery that generates this pattern is fairly well understood. If the annual density fluctuation exceeds the year-to-year variation in peak and low numbers, respectively, this hints to intrinsic regulating mechanisms, together with

limiting food resources, that keep the populations within an envelope of regular density fluctuation only. However, populations can escape from these mechanisms, either occasionally as in the case of outbreaks, or following a systematic temporal pattern with a persistent sequence of the four-cycle phases. The comparison of both eruptive and cyclic populations that we follow in this review will, therefore, enable the identification of the driving force, or forces, that cause the dramatic and still enigmatic bursts in rodent numbers.

Modern ecology is based on the experimental testing of hypotheses. Thus, also population ecologists of small rodents have leaned towards single-species processes and population dynamics, as this allows simpler experimental designs. Manipulating whole communities and defining the causality of responses and population processes in different species of the community is difficult if not impossible. In the northern hemisphere, we have three main rodent genera: *Myodes*, *Microtus* and lemmings. They have three different habitat preferences, three different diets, i.e. seeds, buds, lichens for *Myodes*, graminoids for *Microtus* and mosses for lemmings (Hansson and Henttonen 1985) but see Soininen et al. (2017b), and probably three different social systems—but still, they have synchronised dynamics over large areas. Despite contrasting diets and social systems, the species are exposed to common predators and share the same abiotic factors, environmental change and climate. The community ecological approaches applied by Hansson and Henttonen (1988) and Henttonen (2000) should encourage us to develop other comparative studies on community levels (e.g. Sundell et al. 2012, Ecke et al. 2017) and even experiments monitoring concurrently the responses of several species to community-level manipulations in environmental variables, including food, predation or the social environment (Eccard and Ylönen 2007, Sundell et al. 2008, Eccard et al. 2011).

Further, we should try to understand why the dynamics of some rodent species deviate from the dynamics of other members of the rodent guild in a certain area. In particular, it may be worth searching for a temporal factor that first causes outbreaks in some species, which in turn releases other species from predation pressure so that they can start growing. A potential study system may involve the large European water vole *Arvicola amphibius* in Northern Europe, and *Apodemus* mice species and the tiny harvest mouse *Microtus minutus* in Central Europe.

Two essential questions on the community level would be:

7. *How does the temporal synchrony in the dynamics within the small rodent community shape population cycles and outbreaks?*

and

8. *How does the small rodent community affect the whole ecosystem dynamics?*

The small rodent communities are good models for these kinds of questions as they are logistically easy to work with in natural populations. There is, however, an inherent problem in studying the low phase in the wild, as it is difficult or even impossible to obtain large enough samples to reveal which of the vital population parameters are affected. Just on that account, we urgently need to intensify studies on the low phase of the cycles.

Although we discussed food resources repeatedly throughout the paper, there is still a lack of data specifying rodent diet (but see e.g. Hansson 1971; Hansson and Larsson 1978; Soininen et al. 2018) and potential shifts in the diet through an outbreak or a cycle. Many of the eruptive populations in homogenous agricultural land seem to be directly connected to ample food resources during the outbreaks. However, studying diet changes is challenging because the mechanisms may involve both the quantity and quality of food resources, and their interactions with other factors, for instance predation and/or pathogens and diseases.

An essential question for future research may be:

9. *Is there a systematic shift in small rodent diet through a population cycle or season that is important for shaping the dynamics?*

We have not discussed new insights from studies of how small rodent behaviour may affect population dynamics (Sih et al. 2012). During certain phases of the cycles, different individual behavioural strategies—now often called animal personalities—could be advantageous (Boonstra and Krebs 1979; Eccard and Herde 2013; Nicolaus et al. 2016). The concept combines different aspects such as dispersal, physiology and life history characteristics of individuals into a composite syndrome (Réale et al. 2010; Carere and Maestriperi 2013; Dammhahn et al. 2018). With cycles likely resulting from community-level interactions, a novel approach would be to look at how cycle phases affect in turn individual differences in immunological responses, survival and reproductive investment.

Most studies on population dynamics in small rodents search for one factor shaping population dynamics, possibly even confined to one particular cycle phase. Recurrently, however, we are almost inevitably faced with questions about how various factors interact. For some of these, we assume multifactorial frameworks, but hard data are largely missing. For instance, there is experimental evidence that food supply during winter increases survival (Johnsen et al. 2017), because all animals without access to supplemental food die and the population crashes. But it remains an open

question whether nourishment as such is the only factor, or whether food availability secures healthy animals that can better escape predation or diseases (but see Huitu et al. 2003). This novel multifactorial approach raises the last and probably most central question:

10. *How do different factors such as seasonality, predation, behaviour, food and diseases interact?*

We probably know much more about the mechanisms causing outbreaks than about the driving forces of population cycles, even though population cycles have been under long and intensive research. Outbreaks occur as a response to a more or less stochastic pulse of resource availability. Compared to that, many more factors are suggested to be involved in cyclic dynamics (Fig. 1). Such networks of mutual interactions are complex and difficult to disentangle in practice, but seen in this light the cycles are not at all a mystic phenomenon. Cyclic vole populations and their pathogens have overall received relatively little research attention, and more research in this field is sorely needed. We already know many of the mechanisms involved in population dynamics, hence new questions of how they act together seem to be a most promising direction for a better understanding of outbreaks as well as population cycles. Obviously, the study of small rodent population dynamics will give new insight into general population ecological theory also in the future.

Acknowledgements We thank the reviewers for their very detailed comments and reference suggestions. We thank Konnevesi Research Station for hosting our workshop with Harry Andreassen as leader of the discussion to start to work on this paper. We thank Charles J. Krebs for sending the data for the lemming time series in Fig. 1.

Author contribution statement The paper is the result of a workshop on *Population cycles and outbreaks: Still of interest or historical debate?* at Konnevesi Research Station, University of Jyväskylä, Finland, February 21–23, 2018. The workshop and the idea for the paper were initiated by HY. HPA and JS presented the idea together with HY for the workshop participants and HPA initially coordinated the planning and writing of the manuscript. All authors contributed to the discussion and writing.

Funding Open access funding provided by University of Jyväskylä (JYU).

Open Access This article is licensed under a Creative Commons Attribution 4.0 International License, which permits use, sharing, adaptation, distribution and reproduction in any medium or format, as long as you give appropriate credit to the original author(s) and the source, provide a link to the Creative Commons licence, and indicate if changes were made. The images or other third party material in this article are included in the article's Creative Commons licence, unless indicated otherwise in a credit line to the material. If material is not included in the article's Creative Commons licence and your intended use is not permitted by statutory regulation or exceeds the permitted use, you will

need to obtain permission directly from the copyright holder. To view a copy of this licence, visit <http://creativecommons.org/licenses/by/4.0/>.

References

- Aars J, Ims RA (2002) Intrinsic and climatic determinants of population demography: the winter dynamics of tundra voles. *Ecology* 83:3449–3456. [https://doi.org/10.1890/0012-9658\(2002\)083%5b3449:IACDOP%5d2.0.CO;2](https://doi.org/10.1890/0012-9658(2002)083%5b3449:IACDOP%5d2.0.CO;2)
- Altizer S, Ostfeld RS, Johnson PTJ et al (2013) Climate change and infectious diseases: from evidence to a predictive framework. *Science* 341:514–519
- Andersson M, Erlinge S (1977) Influence of predation on rodent populations. *Oikos* 29:591–597. <https://doi.org/10.2307/3543597>
- Andreassen H, Bondrup-Nielsen S (1991) A comparison of the effects of a moss diet and a varied diet on the growth of juvenile Wood lemmings, *Myopus schisticolor* (Lilljeb.). *Zeitschrift für Säugetierkd* 56:378–379
- Andreassen HP, Gundersen G (2006) Male turnover reduces population growth: an enclosure experiment on voles. *Ecology* 87:88–94. <https://doi.org/10.1890/04-1574>
- Andreassen HP, Ims RA (2001) Dispersal in patchy vole populations: role of patch configuration, density dependence, and demography. *Ecology* 82:2911–2926. [https://doi.org/10.1890/0012-9658\(2001\)082%5b2911:DIPVPR%5d2.0.CO;2](https://doi.org/10.1890/0012-9658(2001)082%5b2911:DIPVPR%5d2.0.CO;2)
- Andreassen HP, Glorvigen P, Rémy A, Ims RA (2013) New views on how population-intrinsic and community-extrinsic processes interact during the vole population cycles. *Oikos* 122:507–515. <https://doi.org/10.1111/j.1600-0706.2012.00238.x>
- Aplin K, Lalsiamliana J (2010) Chronical and impacts of the 2005–09 mautam in Mizoram. In: Singleton GR, Belmain SR, Brown PR, Hardy B (eds) *Rodent outbreaks: ecology and impacts*. IRRI, Los Baños, pp 13–47
- Aulak W (1973) Production and energy requirements in a population of the bank vole, in a deciduous forest of Circaeo-alnetum type. *Acta Theriol (Warsz)* 18:167–190. <https://doi.org/10.4098/at.arch.73-10>
- Bâ K, Kane M, Gauthier P, Granjon L (2013) Ecology of a typical West African Sudanian savannah rodent community. *Afr J Ecol* 51:447–455. <https://doi.org/10.1111/aje.12055>
- Batzli GO (1999) Can seasonal changes in density dependence drive population cycles? *Trends Ecol Evol* 14:129–131
- Begon M, Harper JL, Townsend CR (1996) *Ecology*. Blackwell Science, Oxford, p 1068
- Beldomenico PM, Telfer S, Gebert S et al (2008) Poor condition and infection: a vicious circle in natural populations. *Proc R Soc B Biol Sci* 275:1753–1759. <https://doi.org/10.1098/rspb.2008.0147>
- Belmain SR, Chakma N, Sarker NJ et al (2010) The Chittagong story: studies on the ecology of rat floods and bamboo masting. In: Singleton GR, Belmain SR, Brown PR, Hardy B (eds) *Rodent outbreaks: ecology and impacts*. International Rice Research Institute, Los Baños, pp 49–63
- Belmain SR, Htwe NM, Kamal NQ, Singleton GR (2015) Estimating rodent losses to stored rice as a means to assess efficacy of rodent management. *Wildl Res* 42:132–142. <https://doi.org/10.1071/WR14189>
- Bennison K, Godfree R, Dickman CR (2018) Synchronous boom-bust cycles in central Australian rodents and marsupials in response to rainfall and fire. *J Mamm* 99:1137–1148. <https://doi.org/10.1093/jmammal/gyy105>
- Bian J-H, Du S-Y, Wu Y et al (2015) Maternal effects and population regulation: maternal density-induced reproduction suppression impairs offspring capacity in response to immediate environment in root voles *Microtus oeconomus*. *J Anim Ecol* 84:326–336. <https://doi.org/10.1111/1365-2656.12307>
- Bilodeau F, Gauthier G, Berteaux D (2013) The effect of snow cover on lemming population cycles in the Canadian High Arctic. *Oecologia* 172:1007–1016. <https://doi.org/10.1007/s00442-012-2549-8>
- Bjørnstad ON, Falck W, Stenseth Chr N (1995) A geographic gradient in small rodent density fluctuations: a statistical modeling approach. *Proc R Soc B Biol Sci* 262:127–133. <https://doi.org/10.1098/rspb.1995.0186>
- Blasius B, Rudolf L, Weithoff G et al (2020) Long-term cyclic persistence in an experimental predator–prey system. *Nature* 577:226–230. <https://doi.org/10.1038/s41586-019-1857-0>
- Bogdziewicz M, Zwolak R, Redosh L et al (2016) Negative effects of density on space use of small mammals differ with the phase of the masting-induced population cycle. *Ecol Evol* 6:8423–8430. <https://doi.org/10.1002/ece3.2513>
- Boonstra R (1994) Population cycles in microtines: the senescence hypothesis. *Evol Ecol* 8:196–219. <https://doi.org/10.1007/BF01238250>
- Boonstra R, Krebs CJ (1979) Viability of large- and small-sized adults in fluctuating vole populations. *Ecology* 60:567–573. <https://doi.org/10.2307/1936077>
- Boonstra R, Krebs CJ (2006) Population limitation of the northern red-backed vole in the boreal forests of northern Canada. *J Anim Ecol* 75:1269–1284. <https://doi.org/10.1111/j.1365-2656.2006.01149.x>
- Boonstra R, Krebs CJ, Stenseth NCHR (1998) Population cycles in small mammals: the problem of explaining the low phase. *Ecology* 79:1479–1488. [https://doi.org/10.1890/0012-9658\(1998\)079%5b1479:PCISMT%5d2.0.CO;2](https://doi.org/10.1890/0012-9658(1998)079%5b1479:PCISMT%5d2.0.CO;2)
- Boonstra R, Andreassen HP, Boutin S et al (2016) Why do the boreal forest ecosystems of Northwestern Europe differ from those of Western North America? *Bioscience* 66:722–734
- Bosssdorf O, Richards CL, Pigliucci M (2008) Epigenetics for ecologists. *Ecol Lett* 11:106–115
- Brown PR, Tuan NP, Singleton GR et al (2005) Population dynamics of *Rattus argentiventer*, *Rattus losea*, and *Rattus rattus* inhabiting a mixed-farming system in the Red River Delta, Vietnam. *Popul Ecol* 47:247–256. <https://doi.org/10.1007/s10144-005-0228-x>
- Brown PR, My Phung NT, Gaydon DS (2011) Rats in rice: linking crop and pest models to explore management strategies. *Wildl Res* 38:560–567. <https://doi.org/10.1071/WR10194>
- Burthe S, Telfer S, Begon M et al (2008) Cowpox virus infection in natural field vole *Microtus agrestis* populations: significant negative impacts on survival. *J Anim Ecol* 77:110–119. <https://doi.org/10.1111/j.1365-2656.2007.01302.x>
- Carere C, Maestripieri D (2013) *Animal personalities: behavior, physiology, and evolution*. University of Chicago Press, Chicago
- Chambers LK, Singleton GR, Krebs CJ (2000) Movements and social organization of wild house mice (*Mus Domesticus*) in the wheatlands of northwestern Victoria, Australia. *J Mamm* 81:59–69. [https://doi.org/10.1644/1545-1542\(2000\)081%3c0059:masow%3e2.0.co;2](https://doi.org/10.1644/1545-1542(2000)081%3c0059:masow%3e2.0.co;2)
- Chitty D (1960) Population processes in the vole and their relevance to general theory. *Can J Zool* 38:99–113. <https://doi.org/10.1139/z60-011>
- Chitty D (1967) The natural selection of selfregulatory behaviour in animal populations. *Proc Ecol Soc Aust* 2:51–78
- Clark TJ, Luis AD (2020) Nonlinear population dynamics are ubiquitous in animals. *Nat Ecol Evol* 4:75–81. <https://doi.org/10.1038/s41559-019-1052-6>
- Cornulier T, Yoccoz NG, Bretagnolle V et al (2013) Europe-wide dampening of population cycles in keystone herbivores. *Science* 340:63–66. <https://doi.org/10.1126/science.1228992>

- Cushing BS (1985) Estrous mice and vulnerability to weasel predation. *Ecology* 66:1976–1978. <https://doi.org/10.2307/2937393>
- Dammhahn M, Dingemanse NJ, Niemelä PT, Réale D (2018) Pace-of-life syndromes: a framework for the adaptive integration of behaviour, physiology and life history. *Behav Ecol Sociobiol* 72:62. <https://doi.org/10.1007/s00265-018-2473-y>
- Delattre P, Giraudoux P, Baudry J et al (1996) Effect of landscape structure on Common Vole (*Microtus arvalis*) distribution and abundance at several space scales. *Landsc Ecol* 11:279–288. <https://doi.org/10.1007/BF02059855>
- Duckett JE (1991) Management of the barn owl (*Tyto alba javanica*) as a predator of rats in oil palm (*Elaeis quineensis*) plantations in Malaysia. *Birds Prey Bull* 4:11–23
- Eccard JA, Herde A (2013) Seasonal variation in the behaviour of a short-lived rodent. *BMC Ecol* 13:43. <https://doi.org/10.1186/1472-6785-13-43>
- Eccard JA, Ylönen H (2001) Onset of spring reproduction in the bank vole (*Clethrionomys glareolus*): a matter of food, competition or density? *Can J Zool* 79:1743–1753
- Eccard JA, Ylönen H (2007) Costs of coexistence along a gradient of competitor densities: an experiment with arvicoline rodents. *J Anim Ecol* 76:65–71. <https://doi.org/10.1111/j.1365-2656.2006.01175.x>
- Eccard JA, Jokinen I, Ylönen H (2011) Loss of density-dependence and incomplete control by dominant breeders in a territorial species with density outbreaks. *BMC Ecol* 11:16. <https://doi.org/10.1186/1472-6785-11-16>
- Ecke F, Löfgren O, Sörlin D (2002) Population dynamics of small mammals in relation to forest age and structural habitat factors in northern Sweden. *J Appl Ecol* 39:781–792. <https://doi.org/10.1046/j.1365-2664.2002.00759.x>
- Ecke F, Christensen P, Sandström P, Hörnfeldt B (2006) Identification of landscape elements related to local declines of a boreal grey-sided vole population. *Landsc Ecol* 21:485–497. <https://doi.org/10.1007/s10980-005-2376-y>
- Ecke F, Angeler DG, Magnusson M et al (2017) Dampening of population cycles in voles affects small mammal community structure, decreases diversity, and increases prevalence of a zoonotic disease. *Ecol Evol* 7:5331–5342. <https://doi.org/10.1002/ece3.3074>
- Ehrich D, Schmidt NM, Gauthier G et al (2020) Documenting lemming population change in the Arctic: can we detect trends? *Ambio* 49:786–800. <https://doi.org/10.1007/s13280-019-01198-7>
- Elmhagen B, Hellström P, Angerbjörn A, Kindberg J (2011) Changes in vole and lemming fluctuations in northern Sweden 1960–2008 revealed by fox dynamics. *Ann Zool Fennici* 48:167–179. <https://doi.org/10.5735/086.048.0305>
- Elton CS (1924) Periodic fluctuations in the numbers of animals: their causes and effects. *J Exp Biol* 2:119–163
- Elton CS (1942) Voles, mice and lemmings: problems in population dynamics. Clarendon Press, Oxford
- Fichet-Calvet E, Lecompte E, Koivogui L et al (2008) Reproductive characteristics of *Mastomys natalensis* and Lassa virus prevalence in Guinea, West Africa. *Vector-Borne Zoonot Dis* 8:41–48. <https://doi.org/10.1089/vbz.2007.0118>
- Fiedler LA (1988) Rodent pest problems and management in Eastern Africa. *FAO Plant Prot Bull* 36:125–134
- Forbes KM, Stuart P, Mappes T et al (2014) Food resources and intestinal parasites as limiting factors for boreal vole populations during winter. *Ecology* 95:3139–3148. <https://doi.org/10.1890/13-2381.1>
- Forbes KM, Henttonen H, Hirvelä-Koski V et al (2015) Food provisioning alters infection dynamics in populations of a wild rodent. *Proc R Soc B Biol Sci*. <https://doi.org/10.1098/rspb.2015.1939>
- Gilbert C, McCafferty D, Le Maho Y et al (2010) One for all and all for one: the energetic benefits of huddling in endotherms. *Biol Rev* 85:545–569. <https://doi.org/10.1111/j.1469-185X.2009.00115.x>
- Gilg O, Hanski I, Sittler B (2003) Cyclic dynamics in a simple vertebrate predator-prey community. *Science* 302:866–868. <https://doi.org/10.1126/science.1087509>
- Gilg O, Sittler B, Hanski I (2009) Climate change and cyclic predator-prey population dynamics in the high Arctic. *Glob Chang Biol* 15:2634–2652. <https://doi.org/10.1111/j.1365-2486.2009.01927.x>
- Ginzburg LR, Inchausti P (1997) Asymmetry of population cycles: abundance-growth representation of hidden causes of ecological dynamics. *Oikos* 80:435. <https://doi.org/10.2307/3546616>
- Giraudoux P, Vilette P, Quéré JP et al (2019) Weather influences *M. arvalis* reproduction but not population dynamics in a 17-year time series. *Sci Rep* 9:1–11. <https://doi.org/10.1038/s41598-019-50438-z>
- Glorvigen P, Andreassen HP, Ims RA (2013a) Local and regional determinants of colonisation-extinction dynamics of a riparian mainland-island root vole metapopulation. *PLoS One* 8:e56462. <https://doi.org/10.1371/journal.pone.0056462>
- Glorvigen P, Gundersen G, Andreassen HP, Ims RA (2013b) The role of colonization in the dynamics of patchy populations of a cyclic vole species. *Oecologia* 173:161–167. <https://doi.org/10.1007/s00442-013-2614-y>
- Guarner F, Malagelada JR (2003) Gut flora in health and disease. *Lancet* 361:512–519
- Haapakoski M, Sundell J, Ylönen H (2012) Predation risk and food: opposite effects on overwintering survival and onset of breeding in a boreal rodent: predation risk, food and overwintering. *J Anim Ecol* 81:1183–1192. <https://doi.org/10.1111/j.1365-2656.2012.02005.x>
- Halle S (1993) Diel pattern of predation risk in microtine rodents. *Oikos* 68:510. <https://doi.org/10.2307/3544919>
- Halle S, Lehmann U (1987) Circadian activity patterns, photoperiodic responses and population cycles in voles—I. Long-term variations in circadian activity patterns. *Oecologia* 71:568–572. <https://doi.org/10.1007/BF00379299>
- Halliez G, Renault F, Vannard E et al (2015) Historical agricultural changes and the expansion of a water vole population in an Alpine valley. *Agric Ecosyst Environ* 212:198–206. <https://doi.org/10.1016/j.agee.2015.07.006>
- Hanski I, Hansson L, Henttonen H (1991) Specialist predators, generalist predators, and the microtine rodent cycle. *J Anim Ecol* 60:353–367. <https://doi.org/10.2307/5465>
- Hanski I, Henttonen H, Korpimäki E et al (2001) Small-rodent dynamics and predation. *Ecology* 82:1505. <https://doi.org/10.2307/2679796>
- Hansson L (1971) Small rodent food, feeding and population dynamics: a comparison between granivorous and herbivorous species in Scandinavia. *Oikos* 22:183. <https://doi.org/10.2307/3543724>
- Hansson L, Henttonen H (1985) Gradients in density variations of small rodents: the importance of latitude and snow cover. *Oecologia* 67:394–402. <https://doi.org/10.1007/BF00384946>
- Hansson L, Henttonen H (1988) Rodent dynamics as community processes. *Trends Ecol Evol* 3:195–200. [https://doi.org/10.1016/0169-5347\(88\)90006-7](https://doi.org/10.1016/0169-5347(88)90006-7)
- Hansson L, Larsson T-B (1978) Vole diet on experimentally managed reforestation areas in northern Sweden. *Ecography (Cop)* 1:16–26. <https://doi.org/10.1111/j.1600-0587.1978.tb00934.x>
- Hastings A, Abbott KC, Cuddington K et al (2018) Transient phenomena in ecology. *Science*. <https://doi.org/10.1126/science.aat6412>
- Hayes LD (2000) To nest communally or not to nest communally: a review of rodent communal nesting and nursing. *Anim Behav* 59:677–688
- Hein S, Jacob J (2015) Recovery of small rodent populations after population collapse. *Wildl Res* 42:108. <https://doi.org/10.1071/WR14165>

- Henden JA, Ims RA, Yoccoz NG (2009) Nonstationary spatio-temporal small rodent dynamics: evidence from long-term Norwegian fox bounty data. *J Anim Ecol* 78:636–645. <https://doi.org/10.1111/j.1365-2656.2008.01510.x>
- Henttonen H (1985) Predation causing extended low densities in microtine cycles: further evidence from shrew dynamics. *Oikos* 45:156–157
- Henttonen H (2000) Long-term dynamics of the bank vole *Clethrionomys glareolus* at Pallasjärvi, Northern Finnish Taiga. *Pol J Ecol* 48:87–96
- Henttonen H, Oksanen T, Jortikka A, Haukisalme V (1987) How much do weasels shape microtine cycles in the northern Fennoscandian taiga? *Oikos* 50:353–365. <https://doi.org/10.2307/3565496>
- Heske EJ, Jensen PM (1993) Social structure in *Lemmus lemmus* during the breeding season. In: Stenseth NC, Ims RA (eds) *The biology of lemmings*. Academic Press, London, pp 387–396
- Hestbeck JB (1982) Population regulation of cyclic mammals: the social fence hypothesis. *Oikos* 39:157. <https://doi.org/10.2307/3544480>
- Holland EP, James A, Ruscoe WA et al (2015) Climate-based models for pulsed resources improve predictability of consumer population dynamics: outbreaks of house mice in forest ecosystems. *PLoS One* 10:e0119139. <https://doi.org/10.1371/journal.pone.0119139>
- Hörnfeldt B (2004) Long-term decline in numbers of cyclic voles in boreal Sweden: analysis and presentation of hypotheses. *Oikos* 107:376–392. <https://doi.org/10.1111/j.0030-1299.2004.13348.x>
- Hörnfeldt B, Hipkiss T, Eklund U (2005) Fading out of vole and predator cycles? *Proc R Soc B Biol Sci* 272:2045–2049. <https://doi.org/10.1098/rspb.2005.3141>
- Hsieh CH, Anderson C, Sugihara G (2008) Extending nonlinear analysis to short ecological time series. *Am Nat* 171:71–80. <https://doi.org/10.1086/524202>
- Htwe NM, Singleton GR (2014) Is quantity or quality of food influencing the reproduction of rice-field rats in the Philippines? *Wildl Res* 41:56. <https://doi.org/10.1071/WR13108>
- Htwe N, Singleton G, Thwe A, Lwin Y (2010) Rodent population outbreaks associated with bamboo flowering in Chin State, Myanmar. In: Singleton GR, Belmain SR, Brown PR, Hardy B (eds) *Rodent outbreaks: ecology and impacts*. IRRI, Los Banos, pp 79–97
- Htwe NM, Singleton GR, Nelson AD (2013) Can rodent outbreaks be driven by major climatic events? Evidence from cyclone Nargis in the Ayeyawady Delta, Myanmar. *Pest Manag Sci* 69:378–385. <https://doi.org/10.1002/ps.3292>
- Huan HN, Nga VTQ, Brown PR et al (2010) Rodent impacts in lowland irrigated intensive rice systems in Vietnam. In: Singleton GR, Belmain SR, Brown PR, Hardy B (eds) *Rodent outbreaks: ecology and impacts*. International Rice Research Institute, Los Baños, pp 139–152
- Huitu O, Koivula M, Korpimäki E et al (2003) Winter food supply limits growth of northern vole populations in the absence of predation. *Ecology* 84:2108–2118. <https://doi.org/10.1890/02-0040>
- Huitu O, Norrdahl K, Korpimäki E (2004) Competition, predation and interspecific synchrony in cyclic small mammal communities. *Ecography (Cop)* 27:197–206. <https://doi.org/10.1111/j.0906-7590.2003.03684.x>
- Huitu O, Jokinen I, Korpimäki E et al (2007) Phase dependence in winter physiological condition of cyclic voles. *Oikos* 116:565–577. <https://doi.org/10.1111/j.0030-1299.2007.15488.x>
- Huitu O, Forbes KM, Helander M et al (2014) Silicon, endophytes and secondary metabolites as grass defenses against mammalian herbivores. *Front Plant Sci* 5:478. <https://doi.org/10.3389/fpls.2014.00478>
- Imholt C, Reil D, Eccard JA et al (2015) Quantifying the past and future impact of climate on outbreak patterns of bank voles (*Myodes glareolus*). *Pest Manag Sci* 71:166–172. <https://doi.org/10.1002/ps.3838>
- Ims RA, Fuglei E (2005) Trophic interaction cycles in tundra ecosystems and the impact of climate change. *Bioscience* 55:311–322
- Ims RA, Henden JA, Killengreen ST (2008) Collapsing population cycles. *Trends Ecol Evol* 23:79–86. <https://doi.org/10.1016/j.tree.2007.10.010>
- Ims RA, Yoccoz NG, Killengreen ST (2011) Determinants of lemming outbreaks. *Proc Natl Acad Sci* 108:1970–1974. <https://doi.org/10.1073/pnas.1012714108>
- Iverson SL, Turner BN (1974) Winter weight dynamics in *Microtus pennsylvanicus*. *Ecology* 55:1030–1041. <https://doi.org/10.2307/1940353>
- Jacob J, Tkadlec E (2010) Rodent outbreaks in Europe: dynamics and damage. In: Singleton GR, Belmain SR, Brown PR, Hardy B (eds) *Rodent outbreaks: ecology and impacts*. IRRI, Los Banos, pp 207–223
- Jacob J, Ylönen H, Singleton GR (2004) Spatial distribution of feral house mice during a population eruption. *Ecoscience* 11:16–22. <https://doi.org/10.1080/11956860.2004.11682805>
- Jacob J, Manson P, Barfknecht R, Fredricks T (2014) Common vole (*Microtus arvalis*) ecology and management: implications for risk assessment of plant protection products. *Pest Manag Sci* 70:869–878
- Jensen TS (1982) Seed production and outbreaks of non-cyclic rodent populations in deciduous forests. *Oecologia* 54:184–192. <https://doi.org/10.1007/BF00378391>
- Johnsen K, Boonstra R, Boutin S et al (2017) Surviving winter: food, but not habitat structure, prevents crashes in cyclic vole populations. *Ecol Evol* 7:115–124. <https://doi.org/10.1002/ece3.2635>
- Johnsen K, Devineau O, Andreassen HP (2018) The effects of winter climate and intrinsic factors on survival of cyclic vole populations in Southeastern Norway. *Ann Zool Fennici* 55:173–185. <https://doi.org/10.5735/086.055.0604>
- Kalela O (1957) Regulation of reproduction rate in subarctic populations of the vole *Clethrionomys rufocanus*. *Ann Acad Sci Fenn* 34:1–60
- Kallio ER, Voutilainen L, Vapalahti O et al (2007) Endemic hantavirus infection impairs the winter survival of its rodent host. *Ecology* 88:1911–1916. <https://doi.org/10.1890/06-1620.1>
- Kausrud KL, Viljugrein H, Frigessi A et al (2007) Climatically driven synchrony of gerbil populations allows large-scale plague outbreaks. *Proc R Soc B Biol Sci* 274:1963–1969. <https://doi.org/10.1098/rspb.2007.0568>
- Kausrud KL, Begon M, Ben Ari T et al (2010) Modeling the epidemiological history of plague in Central Asia: palaeoclimatic forcing on a disease system over the past millennium. *BMC Biol* 8:112. <https://doi.org/10.1186/1741-7007-8-112>
- Kay BJ, Twigg LE, Korn TJ, Nicol HI (1994) The use of artificial perches to increase predation on house mice (*Mus domesticus*) by raptors. *Wildl Res* 21:739–743. <https://doi.org/10.1071/WR9940095>
- Khalil H, Olsson G, Ecke F et al (2014) The importance of bank vole density and rainy winters in predicting nephropathia epidemica incidence in northern Sweden. *PLoS One* 9:e111663. <https://doi.org/10.1371/journal.pone.0111663>
- Kleiven EF, Henden JA, Ims RA, Yoccoz NG (2018) Seasonal difference in temporal transferability of an ecological model: near-term predictions of lemming outbreak abundances. *Sci Rep*. <https://doi.org/10.1038/s41598-018-33443-6>
- Klemme I, Ylönen H, Eccard JA (2008) Long-term fitness benefits of polyandry in a small mammal, the bank vole *Clethrionomys*

- glareolus*. Proc R Soc B Biol Sci 275:1095–1100. <https://doi.org/10.1098/rspb.2008.0038>
- Klemola T, Koivula M, Korpimäki E, Norrdahl K (1997) Small mustelid predation slows population growth of microtus voles: a predator reduction experiment. J Anim Ecol 66:607. <https://doi.org/10.2307/5914>
- Klemola T, Koivula M, Korpimäki E, Norrdahl K (2000a) Experimental tests of predation and food hypotheses for population cycles of voles. Proc R Soc B Biol Sci 267:351–356. <https://doi.org/10.1098/rspb.2000.1008>
- Klemola T, Norrdahl K, Korpimäki E (2000b) Do delayed effects of overgrazing explain population cycles in voles? Oikos 90:509–516. <https://doi.org/10.1034/j.1600-0706.2000.900309.x>
- Kohl KD, Weiss RB, Cox J et al (2014) Gut microbes of mammalian herbivores facilitate intake of plant toxins. Ecol Lett 17:1238–1246. <https://doi.org/10.1111/ele.12329>
- Korpela K, Delgado M, Henttonen H et al (2013) Nonlinear effects of climate on boreal rodent dynamics: mild winters do not negate high-amplitude cycles. Glob Chang Biol 19:697–710. <https://doi.org/10.1111/gcb.12099>
- Korpela K, Helle P, Henttonen H et al (2014) Predator-vole interactions in Northern Europe: the role of small mustelids revised. Proc Biol Sci. <https://doi.org/10.1098/rspb.2014.2119>
- Korpimäki E (1986) Predation causing synchronous decline phases in microtine and shrew populations in Western Finland. Oikos 46:124. <https://doi.org/10.2307/3565390>
- Korpimäki E (1993) Regulation of multiannual vole cycles by density-dependent avian and mammalian predation? Oikos 66:359. <https://doi.org/10.2307/3544826>
- Korpimäki E, Norrdahl K (1998) Experimental reduction of predators reverses the crash phase of small-rodent cycles. Ecology 79:2448–2455. [https://doi.org/10.1890/0012-9658\(1998\)079%5b2448:EROPRT%5d2.0.CO;2](https://doi.org/10.1890/0012-9658(1998)079%5b2448:EROPRT%5d2.0.CO;2)
- Korpimäki E, Norrdahl K, Klemola T et al (2002) Dynamic effects of predators on cyclic voles: field experimentation and model extrapolation. Proc R Soc B Biol Sci 269:991–997. <https://doi.org/10.1098/rspb.2002.1972>
- Korslund L, Steen H (2006) Small rodent winter survival: snow conditions limit access to food resources. J Anim Ecol 75:156–166. <https://doi.org/10.1111/j.1365-2656.2005.01031.x>
- Krebs CJ (2011) Of lemmings and snowshoe hares: the ecology of northern Canada. Proc R Soc B Biol Sci 278:481–489. <https://doi.org/10.1098/rspb.2010.1992>
- Krebs CJ (2013) Population fluctuations in rodents. University of Chicago Press, Chicago
- Krebs CJ, Myers JH (1974) Population cycles in small mammals. Adv Ecol Res 8:267–399. [https://doi.org/10.1016/S0065-2504\(08\)60280-9](https://doi.org/10.1016/S0065-2504(08)60280-9)
- Krebs CJ, Chitty D, Singleton G, Boonstra R (1995) Can changes in social behaviour help to explain house mouse plagues in Australia? Oikos 73:429. <https://doi.org/10.2307/3545972>
- Krebs CJ, Boonstra R, Boutin S (2018) Using experimentation to understand the 10-year snowshoe hare cycle in the boreal forest of North America. J Anim Ecol 87:87–100. <https://doi.org/10.1111/1365-2656.12720>
- Labuschagne L, Swanepoel LH, Taylor PJ et al (2016) Are avian predators effective biological control agents for rodent pest management in agricultural systems? Biol. Control 101:94–102
- Lam YM (1983) Reproduction in the rice field rat, *Rattus argentiventer*. Malayan Nat J 36:249–282
- Lambin X, Yoccoz NG (1998) The impact of population kin-structure on nestling survival in Townsend's voles, *Microtus townsendii*. J Anim Ecol 67:1–16. <https://doi.org/10.1046/j.1365-2656.1998.00181.x>
- Lambin X, Petty SJ, Mackinnon JL (2000) Cyclic dynamics in field vole populations and generalist predation. J Anim Ecol 69:106–119. <https://doi.org/10.1046/j.1365-2656.2000.00380.x>
- Lambin X, Bretagnolle V, Yoccoz NG (2006) Vole population cycles in northern and southern Europe: is there a need for different explanations for single pattern? J Anim Ecol 75:340–349. <https://doi.org/10.1111/j.1365-2656.2006.01051.x>
- Leirs H, Verheyen W, Michiels M et al (1989) The relation between rainfall and the breeding-season of *Mastomys natalensis* (Smith, 1834) in Morogoro, Tanzania. Ann LA Soc R Zool Belgiq 119:59–64
- Leirs H, Verhagen R, Verheyen W (1993) Productivity of different generations in a population of *Mastomys natalensis* rats in Tanzania. Oikos 68:53. <https://doi.org/10.2307/3545308>
- Leirs H, Verhagen R, Verheyen W (1994) The basis of reproductive seasonality in *Mastomys* rats (Rodentia: Muridae) in Tanzania. J Trop Ecol 10:55–66. <https://doi.org/10.1017/S0266467400007719>
- Leirs H, Verhagen R, Verheyen W et al (1996) Forecasting rodent outbreaks in Africa: an ecological basis for *Mastomys* control in Tanzania. J Appl Ecol 33:937. <https://doi.org/10.2307/2404675>
- Leirs H, Stenseth NC, Nichols JD et al (1997) Stochastic seasonality and nonlinear density-dependent factors regulate population size in an African rodent. Nature 389:176–180. <https://doi.org/10.1038/38271>
- Leirs H, Sluydts V, Makundi R (2010) Rodent outbreaks in sub-Saharan Africa. In: Singleton GR, Belmain SR, Hardy B (eds) Rodent outbreaks: ecology and impacts. International Rice Research Institute, Los Baños, pp 269–280
- Lemke P, Ren J, Alley RB et al (2007) Observations: changes in snow, ice and frozen ground. In: Solomon S, Qin D, Manning M et al (eds) Climate Change 2007: the physical science basis. Contribution of working group I to the fourth assessment report of the intergovernmental panel on climate change. Cambridge University Press, Cambridge, pp 337–383
- Ley RE, Hamady M, Lozupone C et al (2008) Evolution of mammals and their gut microbes. Science 320:1647–1651. <https://doi.org/10.1126/science.1155725>
- Li G, Li J, Kohl KD et al (2019) Dietary shifts influenced by livestock grazing shape the gut microbiota composition and co-occurrence networks in a local rodent species. J Anim Ecol 88:302–314. <https://doi.org/10.1111/1365-2656.12920>
- Lima M, Marquet PA, Jaksic FM (1999) El Niño events, precipitation patterns, and rodent outbreaks are statistically associated in semiarid Chile. Ecography (Cop) 22:213–218. <https://doi.org/10.1111/j.1600-0587.1999.tb00470.x>
- Lima M, Stenseth NC, Leirs H, Jaksic FM (2003) Population dynamics of small mammals in semi-arid regions: a comparative study of demographic variability in two rodent species. Proc R Soc B Biol Sci 270:1997–2007. <https://doi.org/10.1098/rspb.2003.2448>
- Lindström J, Ranta E, Hanna Kokko et al (2001) From arctic lemmings to adaptive dynamics: Charles Elton's legacy in population ecology. Biol Rev Camb Philos Soc 76:S1464793100005637. <https://doi.org/10.1017/S1464793100005637>
- Luque-Larena JJ, Mougeot F, Viñuela J et al (2013) Recent large-scale range expansion and outbreaks of the common vole (*Microtus arvalis*) in NW Spain. Basic Appl Ecol 14:432–441. <https://doi.org/10.1016/j.baae.2013.04.006>
- Magnusson M, Bergsten A, Ecke F et al (2013) Predicting grey-sided vole occurrence in northern Sweden at multiple spatial scales. Ecol Evol 3:4365–4376. <https://doi.org/10.1002/ece3.827>
- Magnusson M, Hörnfeldt B, Ecke F (2015) Evidence for different drivers behind long-term decline and depression of density in cyclic voles. Popul Ecol 57:569–580. <https://doi.org/10.1007/s10144-015-0512-3>
- Mahlaba TAM, Monadjem A, McCleery R, Belmain SR (2017) Domestic cats and dogs create a landscape of fear for pest rodents

- around rural homesteads. *PLoS One* 12:e0171593. <https://doi.org/10.1371/journal.pone.0171593>
- Massawe AW, Mulungu LS, Makundi RH et al (2011) Spatial and temporal population dynamics of rodents in three geographically different regions in Africa: implication for ecologically-based rodent management. *Afr Zool* 46:393–405. <https://doi.org/10.3377/004.046.0219>
- Massey FP, Hartley SE (2006) Experimental demonstration of the anti-herbivore effects of silica in grasses: impacts on foliage digestibility and vole growth rates. *Proc R Soc B Biol Sci* 273:2299–2304. <https://doi.org/10.1098/rspb.2006.3586>
- Mattson WJ (1980) Herbivory in relation to plant nitrogen content. *Annu Rev Ecol Syst* 11:119–161. <https://doi.org/10.1146/annurev.es.11.110180.001003>
- Meerburg BG, Singleton GR, Kijlstra A (2009a) Rodent-borne diseases and their risks for public health. *Crit Rev Microbiol* 35:221–270. <https://doi.org/10.1080/10408410902989837>
- Meerburg BG, Singleton GR, Leirs H (2009b) The year of the rat ends-time to fight hunger! *Pest Manag Sci* 65:351–352. <https://doi.org/10.1002/ps.1718>
- Meserve PL, Kelt DA, Milstead WB, Gutiérrez JR (2003) Thirteen years of shifting top-down and bottom-up control. *Bioscience* 53:633–646. [https://doi.org/10.1641/0006-3568\(2003\)053%5b0633:tyosta%5d2.0.co;2](https://doi.org/10.1641/0006-3568(2003)053%5b0633:tyosta%5d2.0.co;2)
- Myers JH (2018) Population cycles: generalities, exceptions and remaining mysteries. *Proc R Soc B Biol Sci* 285:20172841
- Nicolaus M, Pialut R, Ubels R et al (2016) The correlation between coloration and exploration behaviour varies across hierarchical levels in a wild passerine bird. *J Evol Biol* 29:1780–1792. <https://doi.org/10.1111/jeb.12907>
- Norrdahl K, Korpimäki E (1995) Mortality factors in a cyclic vole population. *Proc R Soc B Biol Sci* 261:49–53. <https://doi.org/10.1098/rspb.1995.0116>
- Norrdahl K, Korpimäki E (1998) Does mobility or sex of voles affect risk of predation by mammalian predators? *Ecology* 79:226. <https://doi.org/10.2307/176877>
- Norrdahl K, Korpimäki E (2002) Seasonal changes in the numerical responses of predators to cyclic vole populations. *Ecography (Cop)* 25:428–438. <https://doi.org/10.1034/j.1600-0587.2002.250405.x>
- Oli MK (1999) The Chitty effect: a consequence of dynamic energy allocation in a fluctuating environment. *Theor Popul Biol* 56:293–300. <https://doi.org/10.1006/tpbi.1999.1427>
- Oli MK (2019) Population cycles in voles and lemmings: state of the science and future directions. *Mamm Rev* 49:226–239
- Opperbeck A, Ylönen H, Klemme I (2012) Infanticide and population growth in the Bank vole (*Myodes glareolus*): the effect of male turnover and density. *Ethology* 118:178–186. <https://doi.org/10.1111/j.1439-0310.2011.01998.x>
- Ostfeld RS, Jones CG, Wolff JO (1996) Of mice and mast. *Bioscience* 46:323–330. <https://doi.org/10.2307/1312946>
- Pedersen AB, Greives TJ (2008) The interaction of parasites and resources cause crashes in a wild mouse population. *J Anim Ecol* 77:370–377. <https://doi.org/10.1111/j.1365-2656.2007.01321.x>
- Penczykowski RM, Connolly BM, Barton BT (2017) Winter is changing: trophic interactions under altered snow regimes. *Food Webs* 13:80–91. <https://doi.org/10.1016/j.fooweb.2017.02.006>
- Pinot A, Barraquand F, Tedesco E et al (2016) Density-dependent reproduction causes winter crashes in a common vole population. *Popul Ecol* 58:395–405. <https://doi.org/10.1007/s1014-0-016-0552-3>
- Prévot-Julliard AC, Henttonen H, Yoccoz NG, Stenseth NC (1999) Delayed maturation in female bank voles: optimal decision or social constraint? *J Anim Ecol* 68:684–697. <https://doi.org/10.1046/j.1365-2656.1999.00307.x>
- Radchuk V, Ims RA, Andreassen HP (2016) From individuals to population cycles: the role of extrinsic and intrinsic factors in rodent populations. *Ecology* 97:720–732. <https://doi.org/10.1890/15-0756.1>
- Réale D, Dingemans NJ, Kazem AJN, Wright J (2010) Evolutionary and ecological approaches to the study of personality. *Philos Trans R Soc B Biol Sci* 365:3937–3946
- Reid DG, Krebs CJ (1996) Limitations to collared lemming population growth in winter. *Can J Zool* 74:1284–1291. <https://doi.org/10.1139/z96-143>
- Reid DG, Bilodeau F, Krebs CJ et al (2012) Lemming winter habitat choice: a snow-fencing experiment. *Oecologia* 168:935–946. <https://doi.org/10.1007/s00442-011-2167-x>
- Reijnders J, Begon M, Ageyev VS, Leirs H (2014) Plague epizootic cycles in Central Asia. *Biol Lett* 10:20140302. <https://doi.org/10.1098/rsbl.2014.0302>
- Reil D, Imholt C, Eccard JA, Jacob J (2015) Beech fructification and bank vole population dynamics—combined analyses of promoters of human puumala virus infections in Germany. *PLoS One* 10:e0134124. <https://doi.org/10.1371/journal.pone.0134124>
- Rémy A (2011) Linking behaviour with individual traits and environmental conditions, and the consequences for small rodent populations. University of Oslo, Oslo
- Rémy A, Odden M, Richard M et al (2013) Food distribution influences social organization and population growth in a small rodent. *Behav Ecol* 24:832–841. <https://doi.org/10.1093/beheco/art029>
- Reynolds JJH, Lambin X, Massey FP et al (2012) Delayed induced silica defences in grasses and their potential for destabilising herbivore population dynamics. *Oecologia* 170:445–456. <https://doi.org/10.1007/s00442-012-2326-8>
- Ruscoe WA, Pech RP (2010) Rodent outbreaks in New Zealand. In: Singleton GR, Belmain SR, Brown PR, Hardy B (eds) *Rodent outbreaks: ecology and impacts*. IRRRI, Los Banos, pp 239–252
- Saunders G (1986) Plagues of the house mouse in south eastern Australia. In: *Proceedings of the twelfth vertebrate pest conference*, pp 173–176
- Savola S, Henttonen H, Lindén H (2013) Vole population dynamics during the succession of a commercial forest in Northern Finland. *Ann Zool Fennici* 50:79–88. <https://doi.org/10.5735/086.050.0107>
- Schmidt NM, Ims RA, Høye TT et al (2012) Response of an arctic predator guild to collapsing lemming cycles. *Proc R Soc B Biol Sci* 279:4417–4422. <https://doi.org/10.1098/rspb.2012.1490>
- Schweiger S, Boutin S (1995) The effects of winter food addition on the population dynamics of *Clethrionomys rutilus*. *Can J Zool* 73:419–426. <https://doi.org/10.1139/z95-047>
- Sheriff MJ, Krebs CJ, Boonstra R (2009) The sensitive hare: sub-lethal effects of predator stress on reproduction in snowshoe hares. *J Anim Ecol* 78:1249–1258. <https://doi.org/10.1111/j.1365-2656.2009.01552.x>
- Sih A, Cote J, Evans M et al (2012) Ecological implications of behavioural syndromes. *Ecol Lett* 15:278–289
- Sinclair ARE, Olsen PD, Redhead TD (1990) Can predators regulate small mammal populations? Evidence from House mouse outbreaks in Australia. *Oikos* 59:382. <https://doi.org/10.2307/3545150>
- Singleton GR, Smith AL, Shellam GR et al (1993) Prevalence of viral antibodies and helminths in field populations of house mice (*Mus domesticus*) in southeastern Australia. *Epidemiol Infect* 110:399–417. <https://doi.org/10.1017/S0950268800068345>
- Singleton GR, Smith AL, Krebs CJ (2000) The prevalence of viral antibodies during a large population fluctuation of house mice in Australia. *Epidemiol Infect* 125:719–727. <https://doi.org/10.1017/S0950268800004945>

- Singleton G, Krebs CJ, Davis S et al (2001) Reproductive changes in fluctuating house mouse populations in southeastern Australia. *Proc R Soc B Biol Sci* 268:1741–1748. <https://doi.org/10.1098/rspb.2001.1638>
- Singleton GR, Brown PR, Pech RP et al (2005) One hundred years of eruptions of house mice in Australia—a natural biological curio. *Biol J Linn Soc* 84:617–627. <https://doi.org/10.1111/j.1095-8312.2005.00458.x>
- Singleton GR, Tann CR, Krebs CJ (2007) Landscape ecology of house mouse outbreaks in south-eastern Australia. *J Appl Ecol* 44:644–652. <https://doi.org/10.1111/j.1365-2664.2007.01296.x>
- Singleton GR, Belmain S, Brown PR et al (2010) Impacts of rodent outbreaks on food security in Asia. *Wildl Res* 37:355. <https://doi.org/10.1071/WR10084>
- Sipari S, Haapakoski M, Klemme I et al (2016) Population sex-ratio affecting behavior and physiology of overwintering bank voles (*Myodes glareolus*). *Physiol Behav* 159:45–51. <https://doi.org/10.1016/j.physbeh.2016.03.008>
- Soininen EM, Hamel S, Yoccoz NG (2017a) Importance of study design and robust analyses in ecology—what is the evidence for silica–vole interactions? *Funct Ecol* 31:1847–1852
- Soininen EM, Zinger L, Gielly L et al (2017b) Not only mosses: lemming winter diets as described by DNA metabarcoding. *Polar Biol* 40:2097–2103. <https://doi.org/10.1007/s00300-017-2114-3>
- Soininen EM, Henden JA, Ravolainen VT et al (2018) Transferability of biotic interactions: temporal consistency of arctic plant–rodent relationships is poor. *Ecol Evol* 8:9697–9711. <https://doi.org/10.1002/ece3.4399>
- Sonerud GA (1988) What causes extended lows in microtine cycles? Analysis of fluctuations in sympatric shrew and microtine populations in Fennoscandia. *Oecologia* 76:37–42. <https://doi.org/10.1007/BF00379597>
- Soveri T, Henttonen H, Rudbäck E et al (2000) Disease patterns in field and bank vole populations during a cyclic decline in central Finland. *Comp Immunol Microbiol Infect Dis* 23:73–89. [https://doi.org/10.1016/S0147-9571\(99\)00057-0](https://doi.org/10.1016/S0147-9571(99)00057-0)
- Steen H (1995) Untangling the causes of disappearance from a local population of root voles, *Microtus oeconomus*: a test of the regional synchrony hypothesis. *Oikos* 73:65. <https://doi.org/10.2307/3545726>
- Steen H, Holst JC, Solhøy T et al (1997) Mortality of lemmings, *Lemmus lemmus*, at peak density in a mountainous area of Norway. *J Zool* 243:831–835. <https://doi.org/10.1111/j.1469-7998.1997.tb01980.x>
- Stenseth NC (1978) Is the female biased sex ratio in wood lemming *Myopus schisticolor* maintained by cyclic inbreeding? *Oikos* 30:83. <https://doi.org/10.2307/3543525>
- Stenseth NC (1999) Population cycles in voles and lemmings: density dependence and phase dependence in a stochastic world. *Oikos* 87:427–461. <https://doi.org/10.2307/3546809>
- Stenseth NC, Ims RA (1993) Population dynamics of lemmings: temporal and spatial variation—an introduction. In: Stenseth NC, Ims RA (eds) *The biology of lemmings*. Academic press, New York, pp 61–96
- Stenseth NC, Viljugrein H, Saitoh T et al (2003) Seasonality, density dependence, and population cycles in Hokkaido voles. *Proc Natl Acad Sci USA* 100:11478–11483. <https://doi.org/10.1073/pnas.1935306100>
- Sullivan TP, Krebs CJ (1981) An irruption of deer mice after logging of coastal coniferous forest. *Can J For Res* 11:586–592. <https://doi.org/10.1139/x81-080>
- Sundell J, Norrdahl K (2002) Body size-dependent refuges in voles: an alternative explanation of the Chitty effect. *Ann Zool Fenn* 39:325–333. <https://doi.org/10.2307/23735831>
- Sundell J, Huitu O, Henttonen H et al (2004) Large-scale spatial dynamics of vole populations in Finland revealed by the breeding success of vole-eating avian predators. *J Anim Ecol* 73:167–178. <https://doi.org/10.1111/j.1365-2656.2004.00795.x>
- Sundell J, Trebatická L, Oksanen T et al (2008) Predation on two vole species by a shared predator: antipredatory response and prey preference. *Popul Ecol* 50:257–266. <https://doi.org/10.1007/s10144-008-0086-4>
- Sundell J, Church C, Ovaskainen O (2012) Spatio-temporal patterns of habitat use in voles and shrews modified by density, season and predators. *J Anim Ecol* 81:747–755. <https://doi.org/10.1111/j.1365-2656.2012.01956.x>
- Sutherland DR, Singleton GR (2006) Self-regulation within outbreak populations of feral house mice: a test of alternative models. *J Anim Ecol* 75:584–594. <https://doi.org/10.1111/j.1365-2656.2006.01081.x>
- Sutherland DR, Spencer PBS, Singleton GR, Taylor AC (2005) Kin interactions and changing social structure during a population outbreak of feral house mice. *Mol Ecol* 14:2803–2814. <https://doi.org/10.1111/j.1365-294X.2005.02623.x>
- Tann CR, Singleton GR, Coman BJ (1991) Diet of the house mouse, *mus domesticus*, in the mallee wheatlands of North-Western Victoria. *Wildl Res* 18:1–12. <https://doi.org/10.1071/WR9910001>
- Taylor RA, White A, Sherratt JA (2013) How do variations in seasonality affect population cycles? *Proc R Soc B Biol Sci*. <https://doi.org/10.1098/rspb.2012.2714>
- Terraube J, Villers A, Ruffino L et al (2015) Coping with fast climate change in northern ecosystems: mechanisms underlying the population-level response of a specialist avian predator. *Ecography (Cop)* 38:690–699. <https://doi.org/10.1111/ecog.01024>
- Tersago K, Verhagen R, Servais A et al (2009) Hantavirus disease (nephropathia epidemica) in Belgium: effects of tree seed production and climate. *Epidemiol Infect* 137:250–256. <https://doi.org/10.1017/S0950268808000940>
- Therrien JF, Gauthier G, Pinaud D, Bêty J (2014) Irruptive movements and breeding dispersal of snowy owls: a specialized predator exploiting a pulsed resource. *J Avian Biol* 45:536–544. <https://doi.org/10.1111/jav.00426>
- Tkadlec E, Stenseth NC (2001) A new geographical gradient in vole population dynamics. *Proc R Soc B Biol Sci* 268:1547–1552. <https://doi.org/10.1098/rspb.2001.1694>
- Tkadlec E, Zejda J (1998) Small rodent population fluctuations: the effects of age structure and seasonality. *Evol Ecol* 12:191–210. <https://doi.org/10.1023/A:1006583713042>
- Turchin P, Batzli GO (2001) Availability of food and the population dynamics of arvicoline rodents. *Ecology* 82:1521–1534. [https://doi.org/10.1890/0012-9658\(2001\)082%5b1521:AOFATP%5d2.0.CO;2](https://doi.org/10.1890/0012-9658(2001)082%5b1521:AOFATP%5d2.0.CO;2)
- Turchin P, Ostfeld RS (1997) Effects of density and season on the population rate of change in the meadow Vole. *Oikos* 78:355. <https://doi.org/10.2307/3546303>
- Turchin P, Oksanen L, Ekerholm P et al (2000) Are lemmings prey or predators? *Nature* 405:562–565. <https://doi.org/10.1038/35014595>
- van Cann J, Koskela E, Mappes T et al (2019a) Early life of fathers affects offspring fitness in a wild rodent. *J Evol Biol* 32:10:1141–1151. <https://doi.org/10.1111/jeb.13516>
- van Cann J, Koskela E, Mappes T et al (2019b) Intergenerational fitness effects of the early life environment in a wild rodent. *J Anim Ecol* 88:1355–1365. <https://doi.org/10.1111/1365-2656.13039>
- van Wijngaarden A (1957) The rise and disappearance of continental vole plague zones in the Netherlands. *Versl van Landbouwk Onderz* 63:1–21
- Vickery WL, Millar JS (1984) The energetics of huddling by endotherms. *Oikos* 43:88. <https://doi.org/10.2307/3544249>

- Viitala J (1977) Social organization in cyclic subarctic populations of the voles *Clethrionomys rufocanus* (Sund.) and *Microtus agrestis* (L.). *Ann Zool Fennici* 14:53–93. <https://doi.org/10.2307/23733674>
- Voutilainen L, Savola S, Kallio ER et al (2012) Environmental change and disease dynamics: effects of intensive forest management on *Puumala hantavirus* infection in boreal bank vole populations. *PLoS One*. <https://doi.org/10.1371/journal.pone.0039452>
- Webb RE, Leslie DM, Lochmiller RL, Masters RE (2005) Impact of food supplementation and methionine on high densities of cotton rats: support of the amino-acid-quality hypothesis? *J Mamm* 86:46–55. [https://doi.org/10.1644/1545-1542\(2005\)086%3c0046:iofsam%3e2.0.co;2](https://doi.org/10.1644/1545-1542(2005)086%3c0046:iofsam%3e2.0.co;2)
- Wiger R (1979) Demography of a Cyclic Population of the bank vole *Clethrionomys glareolus*. *Oikos* 33:373. <https://doi.org/10.2307/3544325>
- Wolff JO (1993) Why are female small mammals territorial? *Oikos* 68:364. <https://doi.org/10.2307/3544853>
- Wolff JO (1996) Population fluctuations of mast-eating rodents are correlated with production of acorns. *J Mamm* 77:850. <https://doi.org/10.2307/1382690>
- Ylönen H (1988) Diel activity and demography in an enclosed population of the vole *Clethrionomys glareolus* (Schreb.). *Ann Zool Fennici* 25:221–228
- Ylönen H (1994) Vole cycles and antipredatory behaviour. *Trends Ecol Evol* 9:426–430. [https://doi.org/10.1016/0169-5347\(94\)90125-2](https://doi.org/10.1016/0169-5347(94)90125-2)
- Ylönen H, Eccard JA (2004) Does quality of winter food affect spring condition and breeding in female bank voles (*Clethrionomys glareolus*)? *Ecoscience* 11:1–5. <https://doi.org/10.1080/11956860.2004.11682803>
- Ylönen H, Ronkainen H (1994) Breeding suppression in the bank vole as antipredatory adaptation in a predictable environment. *Evol Ecol* 8:658–666. <https://doi.org/10.1007/BF01237848>
- Ylönen H, Viitala J (1985) Social organization of an enclosed winter population of the bank vole *Clethrionomys glareolus*. *Ann Zool Fennici* 22:353–358. <https://doi.org/10.2307/23734230>
- Ylönen H, Viitala J (1991) Social overwintering and food distribution in the bank vole *Clethrionomys glareolus*. *Ecography (Cop)* 14:131–137. <https://doi.org/10.1111/j.1600-0587.1991.tb00643.x>
- Ylönen H, Kojola T, Viitala J (1988) Changing female spacing behaviour and demography in an enclosed breeding population of *Clethrionomys glareolus*. *Ecography (Cop)* 11:286–292. <https://doi.org/10.1111/j.1600-0587.1988.tb00811.x>
- Ylönen H, Mappes T, Viitala J (1990) Different demography of friends and strangers: an experiment on the impact of kinship and familiarity in *Clethrionomys glareolus*. *Oecologia* 83:333–337. <https://doi.org/10.1007/BF00317556>
- Ylönen H, Koskela E, Mappes T (1997) Infanticide in the bank vole (*Clethrionomys glareolus*): occurrence and the effect of familiarity on female infanticide. *Ann Zool Fennici* 34:259–266. <https://doi.org/10.2307/23735490>
- Ylönen H, Jacob J, Davies MJ, Singleton GR (2002) Predation risk and habitat selection of Australian house mice, *Mus domesticus*, during an incipient plague: desperate behaviour due to food depletion. *Oikos* 99:284–289. <https://doi.org/10.1034/j.1600-0706.2002.990208.x>
- Ylönen H, Haapakoski M, Sievert T, Sundell J (2019) Voles and weasels in the boreal Fennoscandian small mammal community: what happens if the least weasel disappears due to climate change? *Integr Zool* 14:327–340. <https://doi.org/10.1111/1749-4877.12388>
- Yoccoz NG, Stenseth NC, Henttonen H, Prévot-Julliard AC (2001) Effects of food addition on the seasonal density-dependent structure of bank vole *Clethrionomys glareolus* populations. *J Anim Ecol* 70:713–720. <https://doi.org/10.1046/j.0021-8790.2001.00531.x>
- Zhang Z, Pech R, Davis S et al (2003) Extrinsic and intrinsic factors determine the eruptive dynamics of Brandt's voles *Microtus brandti* in Inner Mongolia, China. *Oikos* 100:299–310. <https://doi.org/10.1034/j.1600-0706.2003.11810.x>