



Large Impacts of Climatic Warming on Growth of Boreal Forests since 1960

Pekka E. Kauppi^{1,2*}, Maximilian Posch³, Pentti Pirinen⁴

1 Department of Environmental Sciences, University of Helsinki, Helsinki, Finland, **2** Finnish Forest Research Institute (METLA), Vantaa, Finland, **3** Coordination Centre for Effects (CCE), National Institute for Public Health and the Environment (RIVM), Bilthoven, The Netherlands, **4** Climate Service Centre, Finnish Meteorological Institute, Helsinki, Finland

Abstract

Boreal forests are sensitive to climatic warming, because low temperatures hold back ecosystem processes, such as the mobilization of nitrogen in soils. A greening of the boreal landscape has been observed using remote sensing, and the seasonal amplitude of CO₂ in the northern hemisphere has increased, indicating warming effects on ecosystem productivity. However, field observations on responses of ecosystem productivity have been lacking on a large sub-biome scale. Here we report a significant increase in the annual growth of boreal forests in Finland in response to climatic warming, especially since 1990. This finding is obtained by linking meteorological records and forest inventory data on an area between 60° and 70° northern latitude. An additional increase in growth has occurred in response to changes in other drivers, such as forest management, nitrogen deposition and/or CO₂ concentration. A similar warming impact can be expected in the entire boreal zone, where warming takes place. Given the large size of the boreal biome – more than ten million km² – important climate feedbacks are at stake, such as the future carbon balance, transpiration and albedo.

Citation: Kauppi PE, Posch M, Pirinen P (2014) Large Impacts of Climatic Warming on Growth of Boreal Forests since 1960. PLoS ONE 9(11): e111340. doi:10.1371/journal.pone.0111340

Editor: Olivier Boucher, Université Pierre et Marie Curie, France

Received: July 3, 2014; **Accepted:** September 23, 2014; **Published:** November 10, 2014

Copyright: © 2014 Kauppi et al. This is an open-access article distributed under the terms of the Creative Commons Attribution License, which permits unrestricted use, distribution, and reproduction in any medium, provided the original author and source are credited.

Data Availability: The authors confirm that all data underlying the findings are fully available without restriction. All relevant data are within the paper or can be found in the references listed.

Funding: The authors have no support or funding to report.

Competing Interests: The authors have declared that no competing interests exist.

* Email: pekka.kauppi@helsinki.fi

Introduction

Variations of ambient temperature in boreal forests strongly affect the ecosystem processes [1,2,3]. Increased greenness and amplified seasonal changes of CO₂ have been observed [4,5], but the improvement of productivity has not been correlated with warming observations. If climatic warming has impacts on forest growth, this may significantly affect the carbon budget, transpiration and forest albedo [6,7].

Growing degree-days (GDD) are the annual sum of daily temperatures above a pre-defined threshold. GDD combines the effects of favourable temperature on the duration and intensity of growth. Two articles published in the 1980 s projected an increase in the growth of boreal forests under future climate warming [8,9]. A regression was reported, showing how forest growth is positively correlated with GDD ranging from 700 degree-days and low increment in northernmost boreal forests to 1,350 degree-days and high increment in southern boreal forests [8]. Moreover, the regression was used to explore hypothetical warming scenarios [9]. The eco-physiological mechanisms of this correlation are not fully understood. However, process-based ecosystem models suggest that an accelerating nitrogen cycle is an important, though conceivably not the only mechanism [3].

And indeed, a considerable warming has occurred in northern latitudes since the 1980 s [10]. In Canada, a positive and significant growth response to warming has been reported, based on inventory measurements on 1,267 sites, combining observa-

tional data with models, which relate stand growth to stand age [11]. Here we analyse a large amount of data from Finland, collected and compiled by the Finnish Meteorological Institute (FMI) and the Finnish Forest Research Institute (METLA), and apply the empirical methodology used earlier [8]. All boreal forests growing on a land area of 302,000 km² in Finland were covered in the monitoring system. Forest data from Finland are very well documented and have been made available in reference [12]. We describe the study region, derive spatially representative climate trends in terms of Growing Degree Days (GDD), estimate a regression between forest growth and GDD from recent data drawing on the geographic co-variation of the two variables, and finally compare the results with the findings and projections from the 1980 s.

Materials and Methods

The method of this research is based on the empirical finding that spatial and temporal variations of forest growth (annual increment) correlate with variations of GDD [8,9,13]. The study area is located in Finland, stretching from the southern to the northern limit of the boreal biome and is divided in 15 regions (Fig. 1). The Ahvenanmaa region (Åland Islands) is excluded as it has a temperate character and the forested area is small (about 1,000 km²). Region 1 surrounding Helsinki is at the southern edge of the boreal zone, where agriculture and settlements are widespread but, nevertheless, 54% of the land is covered by

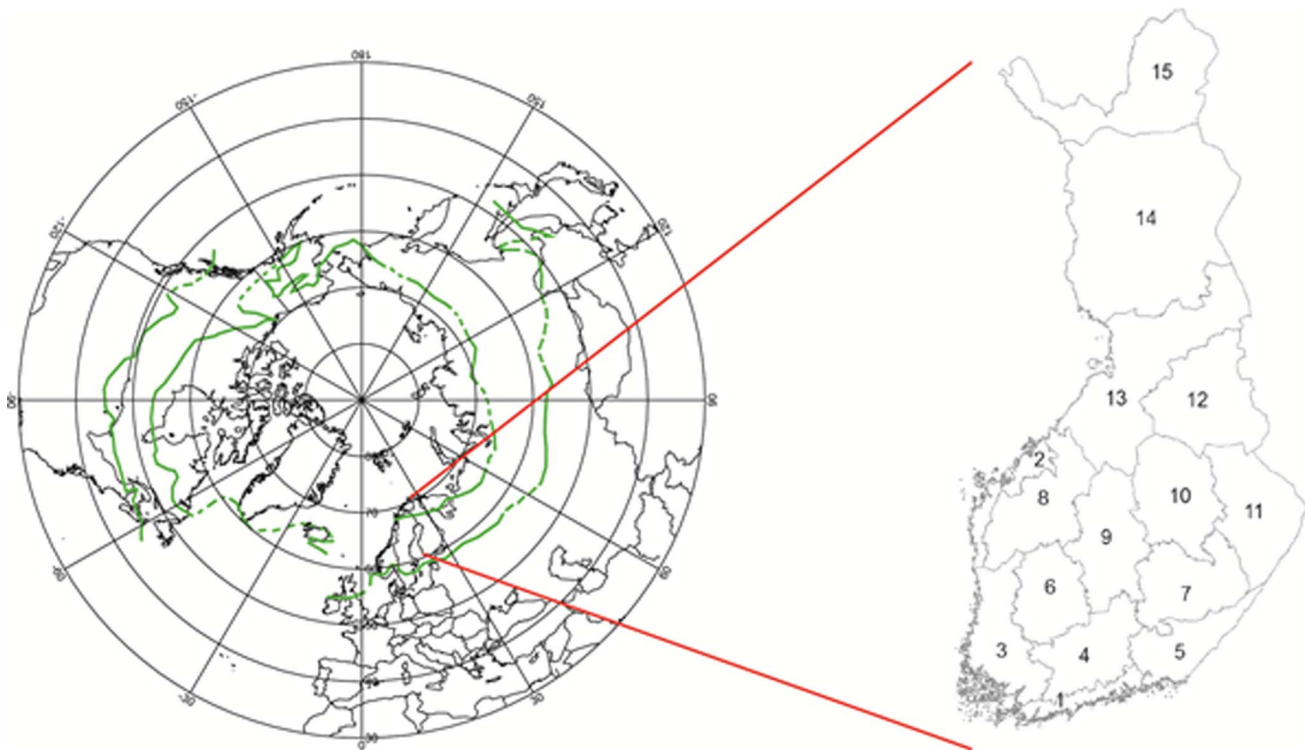


Figure 1. The boreal zone as presented in [9] and the 15 regions of this study located within the boreal biome in Finland.
doi:10.1371/journal.pone.0111340.g001

forests. Region 15 between 68° and 70° N is partly located beyond the Arctic timber line and is the only one where forest land does not predominate as the main land cover type. The distance between the most northern and southern regions is about 900 km.

During 1961–2013 the FMI has recorded daily mean temperature at 120–210 stations across Finland. Station data on the daily mean temperature and the beginning and end of the growing season have been interpolated onto a $10\text{ km} \times 10\text{ km}$ grid using a kriging method [14,15]. GDD for each grid point and each year has been calculated using a threshold temperature of $+5^{\circ}\text{C}$. From these estimates we computed the spatial average GDD for each region and each year. Linear regressions were fitted to these time series.

The 11th National Forest Inventory (NFI) of Finland was carried out in 2009–2012. The sample plots of this inventory provide a rigorous network of measurements, which was distributed over all regions. Forest growth (or annual increment) refers to the accumulation of woody tissue on tree stems during one growing season. A national (and Nordic) convention of the concept ‘forest growth’ was applied, which does not take into account the contribution of the trees lost in natural mortality. However, the growth of recently harvested trees is included into the growth estimate. The concept is similar to ‘gross growth’ as referred to in [11].

The methods of measuring forest increment are well tested, because there has been a persistent economic incentive to obtain accurate information on this natural resource [16]. The number of sample plots measured in the 11th NFI varied between regions from 567 to 4,377 (Table 1). While the total number of plots was large (39,276), an even more important characteristic of the forest inventory system is that the plots were located using a well-tested statistical algorithm [16]. Therefore, the sample represents all forests in each region. Forest growth is directly measured from

sample trees observing the width of the five most recent complete tree rings and the stem elongation of the leader shoot during a five-year period preceding the observation. As the sample trees for growth measurements are statistically chosen on each plot, the results represent the growth of all trees growing on forest land in each region. A linear regression was fitted to the data for describing the dependence of growth on GDD. The data refer to the year 2008, which coincides with the average time of tissue formation of the retrospective growth observations as taken in 11th NFI during 2009–2012.

The approach of this study is strictly empirical and is based on high-quality observations on daily temperature and forest growth, which in Finland are unique within the boreal biome. Measurements from the period 1961 to 2012 (to 2013 for GDD) were chosen, thus obtaining a sufficiently long period of time for trend analyses. Earlier records and reports were available referring to the period 1931–1960 and were used as a reference.

The earlier work [8,9] addressed the same area in Finland and applied growth observations of Finland’s 3rd NFI, which was conducted in 1951–1953. Noting these sampling years and the time lag of retrospective monitoring, the analysis referred to the forest increment during the period 1946–1952. In the earlier papers [8,9] GDD data of the climate normal period 1931–1960 were applied. The method was improved in this new analysis as follows. The kriging method, which was not yet available for [8], provides a better spatial representation of the temperature data. As the forested area varies between regions, the growth observations in regression analysis were weighed by the area of forest land (see Table 1). In determining the growth-GDD regression, the timing of the temperature and growth data was better matched (the observations referring to 2006–2011).

Table 1. Land cover and forest sample size by regions.

Region	Land area 1000 km ²	Forestry land	Forest land	Number of measured forest plots in 2009–2012
1	6.7	4.3	3.6	918
2	7.2	5.1	4.7	1066
3	16.9	10.9	9.8	2513
4	14.3	9.6	9.3	2380
5	10.5	7.7	7.4	1879
6	12.6	9.7	9.2	2300
7	14.3	12.6	12.2	3095
8	19	14.3	12.6	3034
9	16.7	14.4	13.8	3258
10	16.8	14	13.5	3197
11	17.8	15.8	14.6	3430
12	21.5	20.4	17	3264
13	35.5	31.3	24.8	4377
14	64.5	62.5	42.2	3998
15	28.1	27.9	7.8	567
Total	302.4	260.5	202.5	39276

'Forestry land' is a land use concept referring to lands with no other priority assigned except forestry. 'Forest land' is a land cover concept referring to lands, which are estimated to produce at least 1 m³ of wood per hectare and year as a long-term average. Data are from [12] and from METLA (A. Ihalainen, pers. comm.). While the location of the study area is the same as in [8] the geographical borders of regions slightly differ and, in particular, region 15 in the very north was not reported in [8]. doi:10.1371/journal.pone.0111340.t001

Results

Warming trends

Climatic warming was quantified from the GDD regressions, comparing their estimates for the growing seasons of 1961 and 2008 (Fig. 2). The latter year coincided with the forest growth as measured in the 11th NFI. Warming was clearly observed as the GDD was higher for 2008 than for 1961 in all regions. The GDD for 2008 (and 1961) in each region refer to the estimates as obtained from the time series regression, not GDD as measured in that particular year, nor the five-year moving average (see Fig. 2). The warming trends were statistically significant ($p > 95\%$ in all regions). In absolute terms, the GDD warming was largest in the southernmost region 1 (+233 degree days) and smallest in the northernmost region 15 (+124 dd). However, in line with projections [9], the largest relative change was in the northernmost region 15 (+23.8%); while the smallest relative change occurred in the south-eastern region 5 (+15.2%). Comparing the moving averages with the regressions it appears that the warming in all regions was particularly significant since 1990. In all regions, the five-year average for the latest observed year 2011 is higher than the regression estimate for 2011 and for 2008 (Fig. 2).

Impact of warming on growth

The observations of this study can be compared with the earlier results [8]. Relating the most recent growth observations of the 11th NFI to the average GDD of 2006–11, a new regression was obtained with almost the same slope as earlier (Fig. 3). Differences between the results were as follows: (i) The new region 15 in the very north widened the range to lower values; (ii) The warming impact moved the data points to the right; and (iii) Other drivers affecting growth were reflected in the elevated position of the new regression above the old one.

Reproducing successfully the growth-to-GDD regression and obtaining an improved fit lends new support to using GDD in analyses of spatial and inter-annual variations of forest growth in the boreal zone. The new data were temporally better matched and spatially more representative than those reported earlier [8], and in the new analysis the growth estimates were weighted by the area of forest land. These improvements of the method and the inclusion of region 15 contributed to the better fit ($r^2 = 0.94$).

GDD above 1,350 degree-days were common in many regions in 2006–11, unlike in the mid-20th century (Figs. 2 and 3). However, warming was not the only driver affecting growth. Forest management, a gradual change in the species composition and age structure of forests, CO₂ fertilization, improving water-use efficiency, nitrogen deposition and other (unknown) factors can have played a role. In the earlier projections a maximum growth of 6 m³ ha⁻¹ yr⁻¹ was postulated, expecting drought limitations to come into play [9]. This turned out to be incorrect, as growth above 6 m³ ha⁻¹ yr⁻¹ was now observed in the majority of regions, even though the area-weighted country average did not exceed 5 m³ ha⁻¹ yr⁻¹. We cannot predict whether drought limitations will come into play in the future, especially as future climate may trigger changes in precipitation [17].

What would have been the growth of these boreal forests had the warming not occurred? This question was addressed in the following way: For every region we calculated the GDD for the years 1961 and 2008 from the regional regressions given in Fig. 2. Inserting the pairs of GDD values into the new GDD-growth regression (Fig. 3), we computed the warming impact on growth per hectare in every region as the difference of the two obtained growth values. This difference was multiplied by the forest area of each region (see Table 1), resulting in estimates of regional growth due to warming; and the difference to the overall growth was assigned to other factors (Table 2).

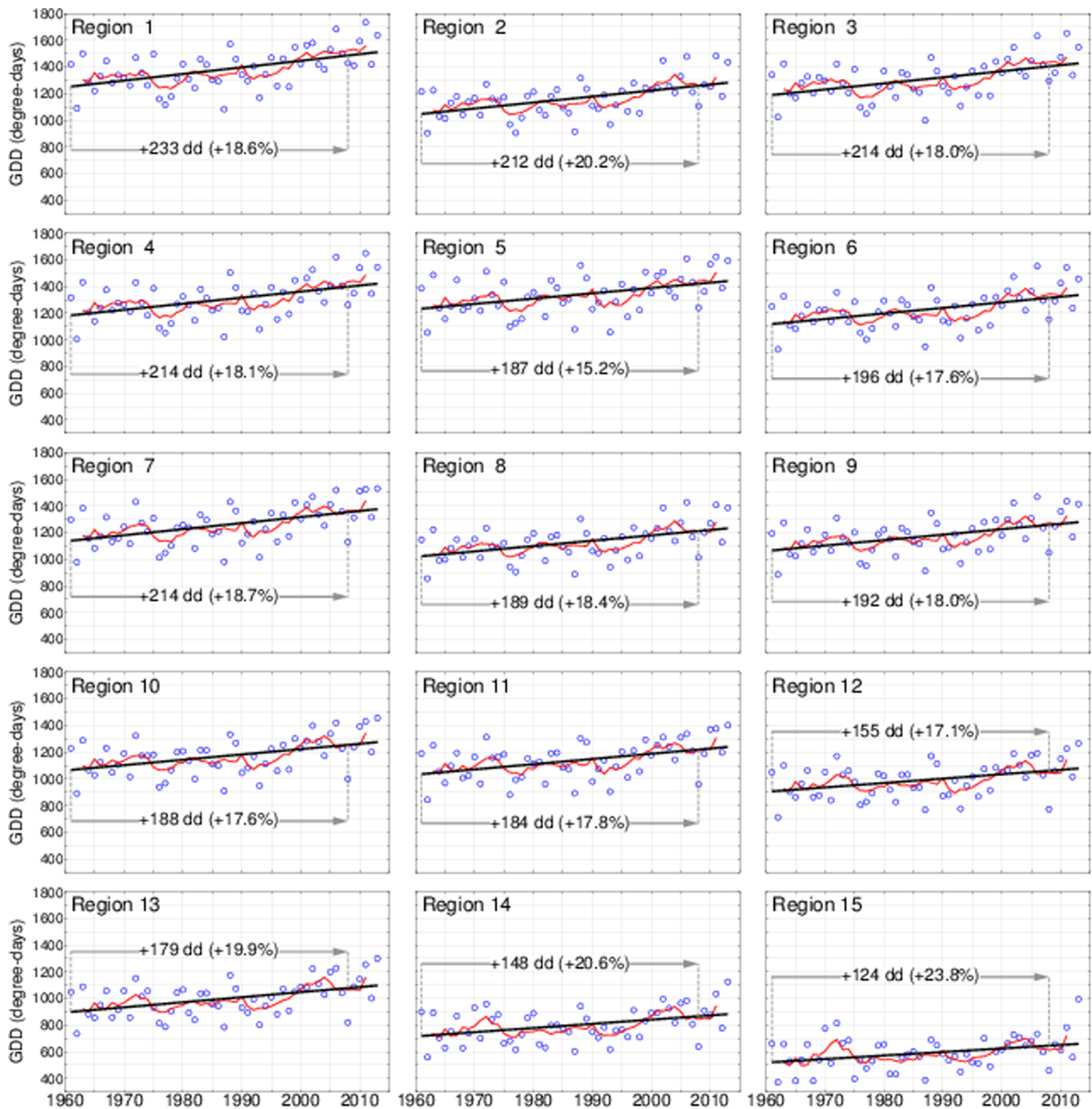


Figure 2. Annual Growing Degree Days (GDD) 1961–2013 for the regions (blue circles). Also shown are the linear regression lines (black) and the 5-year moving averages from 1963 to 2011 (red lines).
doi:10.1371/journal.pone.0111340.g002

A growth of $103.9 \text{ million m}^3 \text{ yr}^{-1}$ was observed in the boreal forests of Finland referring to approximately 2008 as described in the 11th NFI (Table 1, based on [12], excluding Ahvenanmaa (Åland)). This can be compared to the observed growth of $49.5 \text{ million m}^3 \text{ yr}^{-1}$ as measure in the 4th NFI in 1960–63 [18]. Warming-induced increment is estimated at $28.4 \text{ million m}^3 \text{ yr}^{-1}$ (Table 2). An additional change of $+26 \text{ million m}^3 \text{ yr}^{-1}$ would hence be the response to other drivers, such as improved forest management, CO_2 fertilization and other (unknown) mechanisms. Given uncertainties, we estimate that the growth of boreal forests

of Finland would have been about 75 million m^3 in 2008, had the growing season temperatures remained at the level of the 1960's.

Discussion and Conclusions

More than half of the significant growth improvement in the boreal forests of Finland has been a response to climatic warming. Such a large change in productivity has greatly affected the ecological and economic performance of these forests. The long interval of about 60 years and the large geographic scale from the northern to the southern edge of the boreal zone give confidence

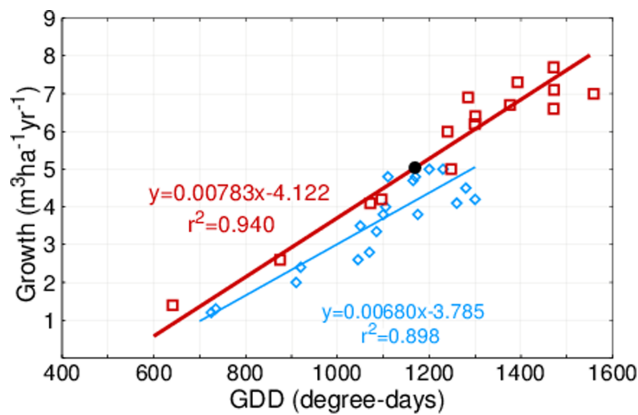


Figure 3. Regressions relating forest growth to Growing Degree Days. The new regression (red) referring to 2006–11 is based on data from the 15 regions shown in Figure 1. The black dot on the red line shows the area-weighted average of all 15 regions. The old regression (blue) as published in [8] was based on 19 data points as recorded in the mid-20th century. doi:10.1371/journal.pone.0111340.g003

for obtaining conclusive results. The regression analyses were applied as they are simple and transparent and enable comparison with earlier results [8,9].

The analysis in this paper addressed the statistical correlation between forest growth and growing degree days. There could be causal mechanisms affecting forest growth, which vary in time and space and are unrelated to temperature and, nevertheless, trigger similar spatial patterns as those depicted in Table 2. However, it has been well documented that the inter-annual variation of growth in the boreal zone correlates with changes in temperature. Moreover, the slope of the regression is reproduced using two independent data sets (see Fig. 3). Therefore, we conclude that the

spatial and temporal variation of growing season temperature is the main causal factor affecting variations of forest growth in this region.

New research is needed to elaborate on the ecological and eco-physiological mechanisms by which increasing temperatures stimulate forest growth. An empirical analysis like this cannot characterize the mechanisms of such large impacts. It is possible that the various drivers reinforce one another based on synergistic mechanisms, thus creating an aggregated warming impact. Analogous attribution problems are met in plant sciences in assessing the relative effect of plant genotype and of the environment in affecting plant phenotype and yield [19]. Finland-specific land management, nitrogen deposition, or disturbance history may have affected the warming response. However, warming has been widely observed [10], CO₂ concentration is spatially invariant and similar warming responses have been reported recently from Canada [20] and in Russia [21]. Indirect observations reinforce this view [4,5]. Therefore, a significant warming impact on productivity has likely occurred more broadly in forest ecosystems of the boreal biome.

The growth concept that we applied is similar to “gross growth” as described in [11]. The fraction of gross growth that decomposes in the forest has been relatively small in Finland (national total <5 million m³ annually). Forest fires have been virtually non-existent; and trees, which have been damaged by storms or insects, are often harvested for industrial or energy use. The growth concept in the Finnish NFI has not changed since the 1960’s and, therefore, the time series are directly comparable.

Ecological and economic assets are at stake in Finnish forestry. For example, a major expansion plan of forest industries in Finland was recently announced, though not yet confirmed, drawing on the ample timber resources. The new plant would start operating in 2017 and would be located in region 6. If confirmed, the new plant is the largest single investment project in forest industry to date in Finland. The plant would process about 4

Table 2. Measured growth by regions, the warming impact, and the growth unrelated to warming.

Region	Mesured growth	Warming impact	Growth unrelated to warming
		Million m ³ yr ⁻¹	
1	2.6	0.7	1.9
2	2.9	0.8	2.1
3	6.6	1.7	4.9
4	7.2	1.6	5.6
5	5.3	1.1	4.2
6	6.2	1.4	4.8
7	8.9	2.0	6.8
8	6.4	1.9	4.5
9	8.8	2.1	6.8
10	9.4	2.0	7.4
11	8.8	2.1	6.7
12	7.2	2.1	5.1
13	10.7	3.5	7.2
14	11.7	4.9	6.8
15	1.5	0.8	0.7
Total	103.9	28.4	75.6

All results refer to the year 2008, with estimates for 1961 used as reference. doi:10.1371/journal.pone.0111340.t002

million m³ of round wood annually. Timber shortage would restrict such initiatives in absence of the warming impacts. More broadly, the implications of climatic warming are immensely diverse. The increment of woody biomass feeds into forest carbon sinks [22]. Research should address the climate feedbacks and assess how hydrology or forest albedo will change as forest growth and standing biomass gradually increase in the circumpolar boreal forests [23–26].

Papers in the 1980 s suggested that boreal forests are sensitive to climatic warming, should a warming occur [8,9]. This study reports that a warming has occurred by 2013 and boreal forests have responded with accelerating growth. Although the data cover only Finland, similar responses have been reported based on research in other parts of northern hemisphere forests [21]. It is important to continue and expand the monitoring programs of

both climatic changes and ecosystem responses, and to further improve their scientific quality.

Acknowledgments

The authors thank Antti Ihalainen, Pekka Nöjd, Pauline Stenberg, Heikki Tuomenvirta and two anonymous reviewers for valuable comments, and the Finnish Forest Research Institute (METLA) and Finnish Meteorological Institute(FMI) for collecting the big data, processing them and making them publicly available. The authors thank University of Helsinki, METLA, FMI, and RIVM for their research infrastructure.

Author Contributions

Analyzed the data: PK MP. Contributed to the writing of the manuscript: PK MP PP. Initiated the research: PK. Processed the meteorological observations: PP.

References

- Goulden ML, Wofsy SC, Harden JW, Trumbore SE, Crill PM, et al. (1998) Sensitivity of boreal forest carbon balance to soil thaw. *Science* 279: 214–217.
- Hyvönen R, Ågren GI, Linder S, Persson T, Cotrufo MF, et al. (2007) The likely impact of elevated [CO₂], nitrogen deposition, increased temperature and management on carbon sequestration in temperate and boreal forest ecosystems: a literature review. *New Phytologist* 173: 463–480.
- Melillo JM, McGuire AD, Kicklighter DW, Moore III B, Vorosmarty CJ, et al. (1993) Global climate change and terrestrial net primary production. *Nature* 363: 234–240.
- Myneni RB, Keeling CD, Tucker CJ, Asrar G, Nemani RR (1997) Increased plant growth in the northern high latitudes from 1981 to 1991. *Nature* 386: 698–702.
- Graven HD, Keeling RF, Piper SC, Patra PK, Stephens BB, et al. (2013) Enhanced seasonal exchange of CO₂ by northern ecosystems since 1960. *Science* 341: 1085–1089.
- Foley JA, Kutzbach JE, Coe MT, Levis S (1994) Feedbacks between climate and boreal forests during the Holocene epoch. *Nature* 371: 52–54.
- Bonan GB (2008) Forests and climate change: forcings, feedbacks, and the climate benefits of forests. *Science* 320: 1444–1449.
- Kauppi P, Posch M (1985) Sensitivity of boreal forests to possible climatic warming. *Climatic Change* 7: 45–54.
- Kauppi P, Posch M (1988) A case study of the effects of CO₂-induced climatic warming on forest growth and the forest sector: A. Productivity reactions of northern boreal forests. In: Parry ML, Carter TR, Konijn N, editors. *The Impact of Climatic Variations on Agriculture, Volume 1: Assessments in Cool Temperate and Cold Regions*. Kluwer, Dordrecht, Netherlands. 183–195.
- Hartman DL, Klein Tank AMG, Rusticucci M, Alexander LV, Broenniman B, et al. (2013) Observations: atmosphere and surface. In: Stocker TF, Qin D, et al., editors. *Climate Change 2013: The Physical Science Basis*, Cambridge University Press. 159–254.
- Hember RA, Kurz WA, Metsaranta JM, Black TA, Guy RD, et al. (2012). Accelerating regrowth of temperate-maritime forests due to environmental change. *Global Change Biology*, 18: 2026–2040.
- Ylitalo E, editor (2013) Finnish Statistical Yearbook of Forestry. Finnish Forest Research Institute.
- Mikola P (1950) On variations in tree growth and their significance to growth studies. *Communications Instituti Forestalis Fenniae* 38: 1–131.
- Henttonen H (1991) Kriging in interpolating July mean temperatures and precipitation sums. Report 12, Dept. of Statistics, University of Jyväskylä, Jyväskylä, Finland. 41 pp.
- Venäläinen A, Heikinheimo M (2002) Meteorological data for agricultural applications. *Physics and Chemistry of the Earth* 27: 1045–1050.
- Tomppo E, Heikkinen J, Henttonen HM, Ihalainen A, Katila M, et al. (2011) Designing and Conducting a Forest Inventory - case: 9th National Forest Inventory of Finland. *Managing Forest Ecosystems Vol.22*, Springer. 272 pp.
- Bintanja R, Selten FM (2014) Future increases in Arctic precipitation linked to local evaporation and sea-ice retreat. *Nature* 509: 479–482.
- Huikari O, Seppälä R, editors (1984) Yearbook of forest statistics 1983. *Folia Forestalia* 590: 76–81.
- Finlay KW, Wilkinson GN (1963) The analysis of adaptation in a plant-breeding programme. *Crop and Pasture Science* 14: 742–754.
- Peng Y, Arora VK, Kurz WA, Hember RA, Hawkins BJ, et al. (2014) Climate and atmospheric drivers of historical terrestrial carbon uptake in the province of British Columbia, Canada. *Biogeosciences* 11: 635–649.
- Frost GV, Epstein HE (2014) Tall shrub and tree expansion in Siberian tundra ecotones since the 1960 s. *Global Change Biology* 20: 1264–1277.
- Pan Y, Birdsey RA, Fang J, Houghton R, Kauppi PE, et al. (2011) A large and persistent carbon sink in the world's forests. *Science* 333: 988–993.
- Swann AL, Fung IY, Levis S, Bonan GB, Doney SC (2010) Changes in Arctic vegetation amplify high-latitude warming through the greenhouse effect. *Proc Natl Acad Sci USA* 107: 1295–1300.
- Betts RA (2000) Offset of the potential carbon sink from boreal forestation by decreases in surface albedo. *Nature* 408: 187–190.
- Luysaert S, Jammot M, Stoy PC, Estel S, Pongratz J, et al. (2014) Land management and land-cover change have impacts of similar magnitude on surface temperature. *Nature Climate Change* 4: 389–393.
- Lukeš P, Rautiainen M, Manninen T, Stenberg P, Möttö M (2014) Geographical gradients in boreal forest albedo and structure in Finland. *Remote Sensing of Environment* 152: 526–535.