

Idea and practice of inclusive farming

Winfried Schäfer

Inclufar



© Natural Resources
Institute Finland



What is inclusive farming (INCLUFAR)?

Inclusive farming is implemented by agricultural and horticultural enterprises which integrate people with

- *physical, mental or emotional disabilities*
- *the socially disadvantaged*
- *young offenders*
- *children with learning disabilities*
- *addicts*
- *the long-term unemployed*
- *active seniors*
- *schools and kindergartens*

Inclusive farming embraces provision, inclusion, rehabilitation training and a better quality of life.

A Background and reasons for Inclufar

A1: Reasons for inclusive farming (INCLUFAR): UN CRPD

The first reason for inclusive farming is the UN Convention on the Rights of Persons with Disabilities, CRPD.

Finland signed the convention and is presently adjusting the legislation accordingly.

<http://www.un.org/disabilities/convention/conventionfull.shtml>

A2: the scientific background of INCLUFAR: Measuring the influence of nature upon health and well being (salutogenesis)

General Self-Efficacy Scale (GSE)

Bandura 1986; Schwarzer 1992; Schwarzer and Jerusalem 1995; Scholz et al. 2002; Sempik 2007; Berget et al. 2008; Sempik et al. 2010; Pedersen et al. 2011

Warwick-Edinburgh Mental Well-being Scale (WEMWBS)

Tennant et al. 2007; Parkinson 2007; Stewart-Brown et al. 2009

Sense of Coherence

Antonovsky 1979; Lundberg and Peck 1995; Eriksson and Lindström 2006

The Connor-Davidson Resilience Scale

Connor and Davidson 2003; Vaishnavi et al. 2007 ; Ewert and Yoshino 2011

The Environmental Identity Scale

Clayton 2003; Olivos and Aragonés 2011; Cervinka et al. 2012

Satisfaction / Happiness

Campbell et al. 1976; Diener 1984; Waldron, 2010; Dolan et al. 2011

Source: Leck 2013. The Impact of Care Farming in the UK, PhD Thesis 342p, The University of Worcester,
<http://www.carefarminguk.org/sites/carefarminguk.org/files/Leck%20PhD%20final%20publish%2009%2013.pdf>

A3: Most needed areas of research and innovation in organic food and farming sector

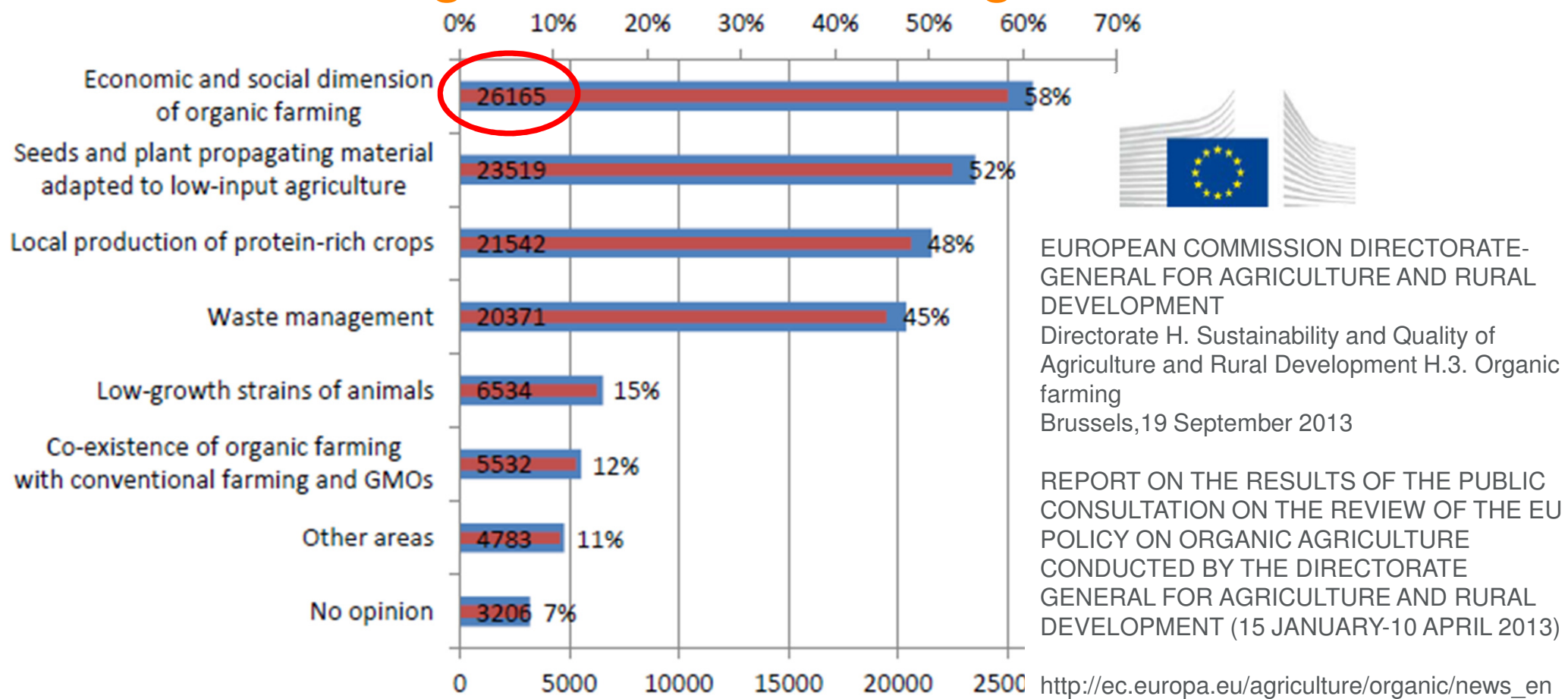


Figure 135 Percentage share of replies on most needed areas of research and innovation in the organic food and farming sector

A4: Ethical background

The philosopher and nuclear physics scientist Carl Friedrich von Weizsäcker in his essay about Friedrich von Bodelschwingh:

„The political world does not bear the sight of suffering. Either she ignores it or she tries to eliminate it. The first alternative is not allowed and the second one is not possible.

The Bodelschwinghs had the power to ease suffering, because they considered suffering as an central fact of live and because they were able to look into the eyes of the suffering in brotherliness.

Justice without compassion is uncharitably, compassion without justice is dishonouring

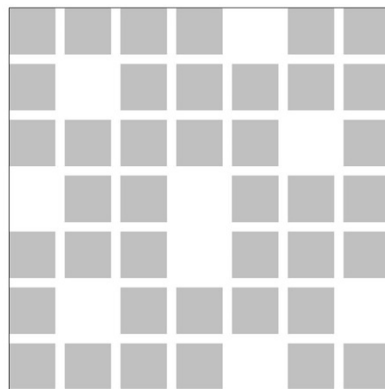
The society needs people with special needs because it is lethally for the soul to close the eyes in front of the reality of suffering“.

Carl Friedrich von Weizsäcker, 1978. Die Bodelschwingh -Tradition. In: Deutlichkeit, Beiträge zu politischen und religiösen Gegenwartsfragen. Hanser Verlag, S 115-136.

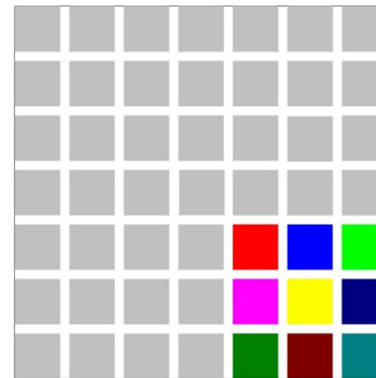
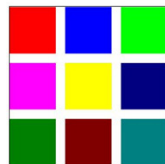
A4: Ethical background

Hartwig Ehlers

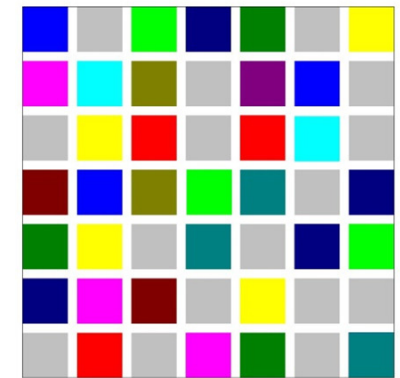
The main difference between humans and people with special need is that the latter ones lack the ability to set up their own living environment and to shape their own CV. Thus the challenge of inclusion is to create such an environment that handicapped people can not only live within such an environment but even take it up as their own.



Exclusion



Integration



Inclusion

B: Examples of Inclusive farming

B: Friedrich von Bodelschwingh

The Bodelschwingh family belonged to a Westfalian nobility. His father was Prussia's Finance Minister. His family's links with the Hohenzollern made Friedrich von Bodelschwingh an early playmate of future emperor Friedrich III.

Friedrich von Bodelschwingh got higher education in agriculture and became farm supervisor of a modern estate in Eastern Pomerania, where he discovered the miserable situation of the landless farm workers.

Wanting to help the needy, he got a protestant theology MA first. His first parish was the German church in Paris. There were at the time about 80000 German day labourers in Paris.

In 1872, he became the head of a protestant charity in Bielefeld to take care of epileptic patients. Under his leadership, this institution became one of the most important ones extending their activity to all forms of handicap.

His son Friedrich von Bodelschwingh jun. took over the management of the institutions. During the war, when the Nazis carried out the slaughter of all mental patients, Pastor Bodelschwingh insisted that he would be killed together with his inmates. He managed that the politicians let him and the inmates of his colony live.

Source: https://en.wikipedia.org/wiki/Friedrich_von_Bodelschwingh



Friedrich von Bodelschwingh jun. 1877-1946

The von Bodelschwingh Foundations of Bethel are still in operation, helping more than 14,000 persons in clinics, homes, schools, kindergartens, live-in groups, work therapy facilities and shops for the disabled.

B: Manor Rheinau, Fintan foundation, Switzerland



Projekt Fintan	Fintan Betriebe	Laden Café Galerie	Fintan Partner	Produkte Leistungen	Publikationen
Kontakt Freundeskreis					



- Sativa organic seed breeding and propagation
- Social therapy Fintan
- Proteus workshop of fine arts
- Fintan Five registered association
public relations and consulting, massage, training in
biodynamic farming, day care centre, dyeworks
- Bee keeping
- Pneumatit Ltd Concret building materials



B: Manor Rheinau, farm director Martin Ott



- Grown up in Zürich
- Primary school teacher
- Founder of the social therapy farm Bäretswil
- Member of the municipality council
- Member of the Canton council
- Fintan project founder
- Chairman of the board of trustees of the Research Institute of Organic Agriculture (FiBL)
- Dairy cow researcher

Textbook «Kühe verstehen» (Understanding cows). Of course his cows have horns.

Foto: Imre Mesterhazy

Source: <http://www.zol.ch/bezirk-hinwil/baeretswil/Martin-Ott-Milchbauer-und-Sozialtherapeut/story/31498506>

B: Association LebensGut Miteinander, Austria

This inclusive farm received in 2014 the „Future award“ of Lower Austria in the category social affairs and generations:

The farm embraces seven activities (some of them under construction)

- Seminar- and cultural centre
- Day care centre
- Primary school
- Organic horticulture
- Medical practice
- Meeting centre for elderly
- Accomodation for all generations

<http://www.lebensgutmiteinander.com/>





B: Inclusive farming co-operation in Unterlengenhardt, Southern Germany

Farm ULMENHOF
12 ha arable land, dairy cows, chesse dairy, farm shop

Plant nursery

BURGHALDE
Social pedagogic home for adolescents

PARACELSUS-Clinic
Clinic for inner deseases
65 beds



<http://www.ulmenhof-unterlengenhardt.de/index.php/landwirtschaft/besonderheiten>, www.burghalde.de, www.paracelsus-stiftung.de

Wir, die Hofgemeinschaft Weide-Hardebek, mit unseren 3 biologisch-dynamisch geführten Höfen betreiben auf 150 ha Land Ackerbau, Viehzucht und Gartenbau

HOFINDIVIDUALITÄT in sich geschlossener Betriebskreislauf

Fruchtfolge



Biologisch-Dynamische Präparate



Kompostwirtschaft



Zucht und Mast der seltenen Robustrinderrassen Dexter und Hinterwälder

Geflügelmast
Hühner, Enten, Gänse



www.weide-hardebek.de

B: Inclusive farm Weide-Hardebek



INCLUFAR project partners

INCLUFAR project partners and contact addresses:

PARTNERS:

AUSTRIA

Achim Leibing, achim.leibing@gmx.at
+43 72323672
Integrative Hofgemeinschaft Loidholdhof
Oberhart, 9
4113 Sankt Martin im Mühlkreis
www.loidholdhof.org
www.loidholdhof.at



BULGARIA

Zornitsa Valkova, organization@oporabg.com
+359887252274
BAACEST Bulgarian Association for Anthroposophical
Curative Education and Social Therapy
Varna 9003
ul. Mur 17, vh.B, ap.28
www.oporabg.com



ESTONIA

Wiebe Soepboer, wiebesoepboer@gmail.com
+372 4898300
Pahkla Camphilli Küla Estonia
79742 Kohila vald
www.pahklack.org



FINLAND

Alexandra Kraus, alexandra.kraus@tapola-camphill.fi
+ 358 447722859
Sylvia Koti yhd. Tapolan Kyläyhteisö
Tapola
Raikkolantie 40
16350 Niinikoski
www.tapolacamphill.net



NORWAY

Ludwig Kraus, ludwig.kraus@tapola-camphill.fi
+47 99770870
CNRA Camphill Northern Region Association
Reidar Jensensgate 10
7550 Hommelvik
www.vinwebdev.org



THE NETHERLANDS

Henk Poppenk, h.poppenk@urticadevijfsprong.nl
+31 575553459
Urtica de Vijfsprong
Reeoordweg 2a
7251 JJ Vorden
www.urticadevijfsprong.nl



TURKEY

Prof.Dr. Hamide Gübbük, gubbuk@akdeniz.edu.tr
+90 242 3102422,
Akdeniz University Antalya,
Dumlupinar Boulevard
07058 Antalya
www.akdeniz.edu.tr



The project team

COORDINATORS:

Hartwig Ehlers, hardebek@t-online.de
+49 4324 882790
HOFGEMEINSCHAFT WEIDEHARDEBEK
LBF gGmbH
Hauptstr. 32 – 34
24616 Hardebek, Germany
www.weide-hardebek.de



Dr. Gerhard Herz, info@ibuibu.com
+49 8142 570770
Institut für Betriebliche Bildung & Unternehmenskultur - IBU
Augsburger Straße 31a
82194 Gröbenzell, Germany
www.ibuibu.com



Klaus Merckens, klaus@merckens.de
+49 731 3608254
merckens development support GmbH
St.-Barbara Str. 30
89077 Ulm, Germany
www.merckens.de



Dr. Thomas van Elsen, Thomas.vanElsen@petrarca.info
+49 5542 981655
PETRARCA EUROPÄISCHE AKADEMIE FÜR
LANDSCHAFTSKULTUR E.V.
Universität Kassel, FB 11
Nordbahnhofstr. 1a
37213 Witzenhausen, Germany
www.soziale-landwirtschaft.de



Dr. Winfried Schäfer, winfried.schafer@luke.fi
+358 29 532 6732
NATURAL RESOURCES INSTITUTE FINLAND (Luke)
Koetilantie 5
00790 Helsinki, Finland
www.luke.fi/en



C: Results and conclusion

Diversity of agriculture and landscape of INCLUFAR partner farms

Production	Country	AT	BG	DE	EE	FI	LV	NL	NO	SE	RU	TR
crops												
forest		X				X			X			
meadows, pasture		X		X	X	X	X	X	X		X	
park/nature conservation				X						X		
arable land		X		X	X	X	X		X		X	X
horticulture		X		X		X	X	X	X	X	X	X
herbs		X		X		X	X				X	
fruits		X		X								X
berries		X		X		X					X	X
animal husbandry												
horses		X							X	X		
cows		X		X	X	X	X	X	X		X	
donkey		X					X				X	
sheep		X				X	X		X			
pigs				X	X	X			X		X	
goats		X					X		X			
turkey							X					
ducks				X			X					
geese		X		X			X					
chicken		X		X	X	X	X		X		X	
bee keeping		X										

Inclusive working places and renewable energy of INCLUFAR partner farms

Country	AT	BG	DE	EE	FI	LV	NL	NO	SE	RU	TR
farm production											
forestry	X							X			
agriculture	X		X	X	X	X	X	X		X	
horticulture	X		X		X	X	X	X	X	X	
food processing											
herb workshop					X	X				X	
dairy/cheese				X	X	X	X	X		X	
juice factory								X			
other food processing			X	X	X				X	X	
craft											
bakery	X		X					X	X	X	
weaving/felt/wool workshop	X				X	X	X	X		X	
pottery								X			
joinery, carpentry	X		X					X		X	
bookbindery						X		X			
sawmill								X			

Inclusive working places of INCLUFAR partner farms

Country	AT	BG	DE	EE	FI	LV	NL	NO	SE	RU	TR
other											
art/painting workshop								X			
candles workshop	X			X							
packaging			X								
housekeeping	X		X		X		X	X		X	
laundry	X							X			X
catering, café, restaurant	X						X				
guest house								X			
administration services			X								
whole sale			X				X			X	
marketing			X								
shop	X		X				X	X			
kindergarten								X			
energy											
CHP power plant			X								
wood chip furnace			X		X						
heating/fire wood workshop	X				X		X	X			

Conclusion

Inclusive farming: a step towards social and ecological inclusion

Inclusive farming has an impact on the quality of work on a farm as well as on the rural area and its various professions (farmers, gardeners, craftsmen, nurses, social workers, civil servants, etc.). The term “inclusion”, as a central concern of the UN Convention on the Rights of Persons with Disabilities, will also be applied to improve the cultural landscape and its biotopes. Inclusive farming creates a greater awareness of social and ecological inclusion.

This project has been funded with support from the European Commission. This communication reflects the views only of the author, and the Commission cannot be held responsible for any use which may be made of the information contained therein.

Thank you!

WWW.INCLUFAR.EU